

RFID BASED AUTOMATIC BUS TICKETING SYSTEM

Ms.Gouri V. Mane,

Dr.Yuvraj K.Kanse,

Dr.Suhas S.Patil

*PG Student, K.B.P.C.O.E., Satara,
Maharashtra, India*

*Associate Professor,
,K.B.P.C.O.E., Satara, Maharashtra,
India*

*Associate Professor,
K.B.P.C.O.E., Satara,
Maharashtra, India.*

Abstract—This paper presents an automatic bus ticketing system using Radio Frequency Identification (RFID) and Controller Area Network (CAN) bus technology. The system is intended to replace the traditional human-oriented ticketing system. It gives the solution to problems occurred in traditional systems as well as saves passengers ticketing time. The system uses an RFID card for passenger identification and uses the same for fare payment corresponding to the distance traveled. This system has an RFID reader module installed in a transport vehicle which is mainly used to verify the passenger, a central control unit used to monitor things like account balance, tickets charge, etc. The system involves a distance measuring unit which uses the GPS or vehicle's odometer/trip meter to detect the location of the bus, boarding place and alighting place of the passenger to estimate distance. Users need to scan their card in front of the RFID reader which sends the data of that card to the central unit for further processing. In case the vehicle is traveling in an area that can't gain access to the satellite i.e. if GPS is not giving proper location then the distance is calculated by an odometer.

Keywords— Microcontroller, GPS interfacing unit, LCD module, RFID module, CAN bus module, CPU cards, Enclosures, Interfacing Hardware.

1. INTRODUCTION

A. Overview

India is widely dependent on the public transport system for commute, majorly in an urban area. The public transport system is presently controlled with a conventional ticketing system and needs a conductor as a major human resource. Some time creates chaos about the fare system. The conductor has to issue proper tickets to all the passengers, this process is more time-consuming. So it is essential to develop an efficient system for bus fare collection. Hence this experiment is conducted using advanced technology, to design a system that addresses most of the problems regarding the existing bus fare

collection system. This system automates the entire bus fare collection.

The system uses a Radio Frequency Identification (RFID) card and associated technology. RFID module is used for calculating the fare according to distance traveled by the passenger. As the passenger is regularly carrying the reusable RFID card, it also reduces the wastage of papers that are used for tickets purpose. An RFID card contains a unique digital data in it. User needs to scan their tag by the RFID reader to identify the tag ID. The tag ID contains the data of passenger i.e. passenger name, card balance, the traveling distance of passengers. The reader circuit sends the data into the Central Control Unit (CCU) system which has all the details of the particular passenger. It checks the identity of the person. Again passenger needs to hold the tag in front of the reader while alighting from the bus. The related fare is deducted from the tag as per the distance traveled by the passenger. RFID is a well-known technology that is used in many fields for identification and security goals. Here, two RFID modules are used at two different boarding places in the vehicle. Passengers can easily scan their RFID tags from places. The current location of the vehicle is identified by the Global Positioning System (GPS) and the traveling distance of passengers is sent to the system where it is shown by using Liquid Crystal Display (LCDs). To detect vehicle location and to find out the traveling distance the GPS technology is used. Controller Area Network (CAN) module is mainly used for synchronization between all these RFID modules.

B. Motivation

In the human-oriented ticketing system, the ticketing process is controlled by a conductor. The conductor collects money from each passenger and issue a ticket. Initially, printed papers or tokens are used as tickets. This system has many disadvantages. The passenger has to carry the ticket till the end of travel, the conductor should ensure that everyone has got the ticket. The time taken for ticketing is comparatively more and more amount of paper

is needed to print the ticket. Nowadays, handheld machines are used to print tickets.

C. Objectives

1. To develop an efficient electronic bus fare collection system that can replace the traditional ticketing system.
2. To design and implement the solution for problems that occurred in traditional systems.
3. To save passengers ticketing time because the traditional ticketing system is more time-consuming.
4. To create the system which is more secure and gives confirmed notification. In traditional ticketing system passengers are required to pay for the ticket every time. Hence, it is proposed to design such a system in which the passenger requires to purchase the card only once.

LITERATURE REVIEW

5. Faisal Mahedi Hasan, GolamTangim, Kaiful Islam, Rezwanal Khandolkar have proposed the system which has an RFID-based Ticketing System for public transport. In this, authors have used RFID tags (Tickets) which has the right of entry to any bus service of the city only incoming passenger's current location and passenger destination point on the keyboard attached to each bus. The data is transferred to the server's main database and the equivalent credit will be stored in the corresponding bus account. Also, the display at every bus stop reports the passengers, leaving time of the last bus of any path. [1]
6. Dedy Wahyu Herdiyanto, Istas Pratomo, has implemented a system that contains RFID cards as an electronic ticket, On-Board Unit (OBU), access point at end place, network and managing returns server. A passenger may do the payment by OBU that installed in the transport system receiver by drumming the RFID card if they go into and out the vehicle. OBU system will read RFID data in the passenger card and sends it to the server. To access the server, OBU is connecting to the network throughout the access point at the bus stop. The server collects data from OBU two times for every passenger. Each of the data contains a passenger ID as well as the end location. The alighting location indicated passenger's present location and used to compute the fare required for service by analyzing boarding and alighting location. The finest

range for OBU to connect via Wi-Fi is about 4-6 meters. [2]

7. Deepali Kayande, Sarita Saldanha, Sisil Sunny, and Bianca Alphonso developed a system has Near Field Communication(NFC) and RFID. The system is based on ticketing and tracking of the bus. The system recommends a user-friendly automated ticketing system which will automatically remove the passenger's fare based on the distance traveled and do real-time tracking of the bus so that the passengers know exactly when the bus will arrive.[3]
8. An automatic fare collection system using Radio Frequency Identification (RFID) without the need of a conductor according to the distance traveled by the passenger. The system uses a PIC controller for controlling interface purposes. The IR sensor is used for counting the number of passengers entering the bus and the computation will be sent to the PIC microcontroller which prepares it. U-slot sensor, as well as motor, is used to compute the range and the relevant amount is deducted from the RFID. [4]
9. Applying an automatic ticketing system enables operators such as transport authorities to save time and personnel costs; fare collection can be created more efficiently.

III. SYSTEM DESIGN ANDIMPLEMENTATION

System Flow Chart

The functional program flow is as shown in figure 1 and figure 2. Figure 1 shows the flow chart for the Central Control Unit and Figure 2 shows the flow chart for the Door Control Unit (DCU). In these systems, RFID reader check the card's validity which is held by the passenger near the DCU. If the card is valid then it reads/identifies RFID tag and sends the information to the Centarl

Control Unit (CCU)

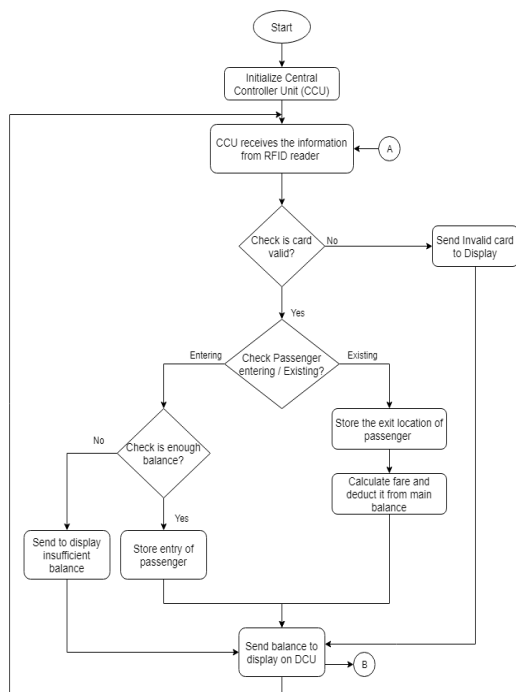


Figure 1. Flow chart for CCU

At the CCU it receives the information from RFID reader checks the card's validity. If the card is invalid then it sends "Card is Invalid" to the display and if the card is valid then it sends the "Card is Valid" to the display and checks passenger is entering/exiting. If a passenger is entering the bus then it checks for enough balance in the card. If the balance is less then it sends "Zero Balance Please Recharge The Card" to the display or if balance is enough then it stores the entry of passengers. When a passenger is exiting, it stores the alighting location of the passenger as well as calculates fare according to distance traveled by the passenger. The calculated amount is deducted from the main balance of the card and the remaining balance is sending on the display on DCU

The functioning of the System The block diagram for the "Automatic Bus Ticketing system" is as shown in figure 3. In the figure, RFID module, GPS module, and LCDs are interfaced with the Arduino Uno controller by using CAN bus. The RFID reader is used to verify the passenger. A control unit that uses the database to monitor factors likes fare, account balance, etc. The system also involves a distance measuring unit which uses the GPS module to find the place of boarding and alighting and to calculate the traveling distance. CAN module is used to establish communication as well as synchronization between multiple DCU's and CCU.

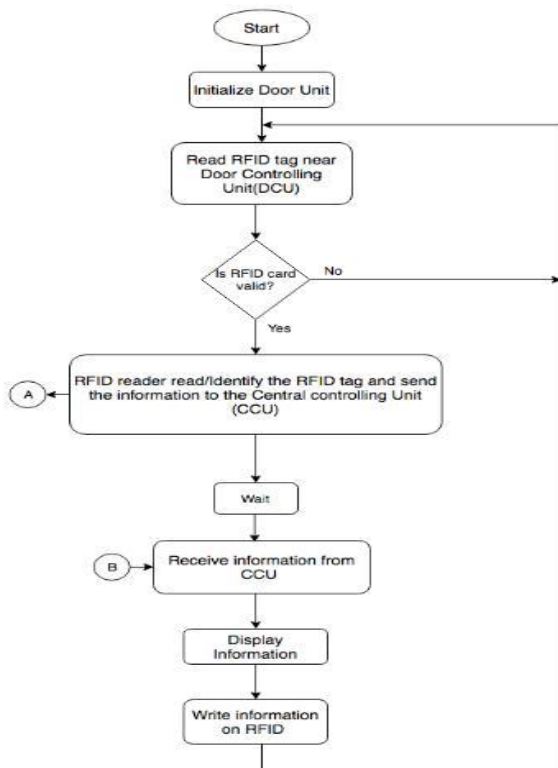


Figure 2. Flow chart for DCU

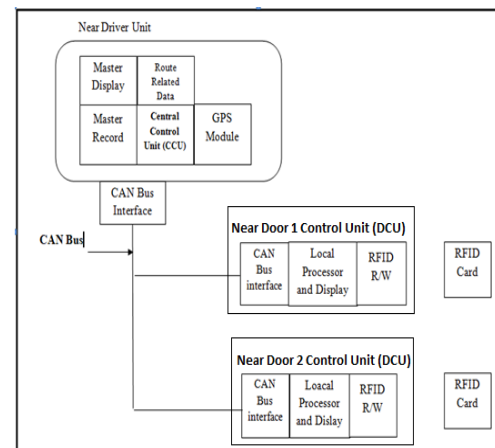


Figure 3. System representation of automatic farm watering system

. The MCP2515 Chip is a controller produced to simplify applicability that requires interfacing with a Can-Bus. LCD is used to display different parameters like stages of traveling path, deducted amount, distance traveled, balance, etc. After registering the card on the system, the system blocks that card till the next registration from the same card. There are multiple DCUs at different doors of

the vehicle. This will make the passenger to easily register his card from any door of the vehicle.

C. Following Components are used for testing and fabrication

1. Microcontroller with support circuitry – Arduino Uno board is used to process the program and controlling the system.
2. GPS interfacing unit – GPS L80 M39 to find the location of the vehicle.
3. LCD Module– 16X2 LCD module is used to display the passenger's information on CCU unit and in CCU units i.e. traveling distance of passenger, passenger name, card balance, number of passengers present in the vehicle.
4. RFID module – EM-18 RFID module is used to scan and read the RFID tag.
5. CAN bus module – CAN MCP2515 is used for communication and synchronization between different units in the system.
6. Enclosures
7. Interfacing Hardware – For interfacing different components in the system with each other.

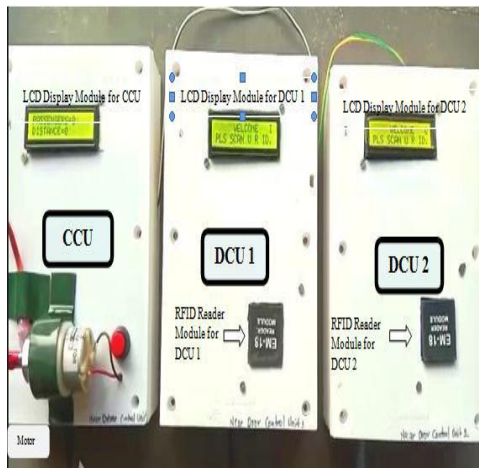


Figure 4: Photograph of the system shows CCU and DCU units for Automatic Bus Ticketing System

IV. CONCLUSION

The system is fully automated, reliable, transparent and convenient. In this system, there are three units one CCU system and two DCU systems. At the DCU

unit, the RFID tag/card is scanned by the RFID reader; it identifies the passenger entering/existing and checks the validity of the card. The card information is displayed on the LCD screen. After traveling some distance, the card is again scanned by the passenger and the system deducts the calculated amount from the tag/card according to the traveling distance of the passenger. The display shows the remaining balance of the card. The Tags/cards being reusable and they are more beneficial as compared to the paper-based ticketing system. Also, fare calculation is performed automatically fare is crystal clear. Cash is no longer necessary, contactless Tags/cards can be loaded with great amounts of money; passengers no longer need to carry and give the correct change. The system reduces most of the disadvantages in the existing paper-based ticketing system. The card is reusable and rechargeable so people do not need to purchase the tickets every time from the conductor. Hence human interface is eliminated and also reduces wastage of paper. By making some modifications in the same system it is possible to develop such a system that has many features in one application that can be used from various platforms.

V. ACKNOWLEDGEMENT

I take this opportunity to express my gratitude to the "Karmaveer Bhaurao Patil College of Engineering, Satara" and Electronics Engineering Department for approving us the project topic "RFID BASED AUTOMATIC BUS TICKETING SYSTEM" and for allowing access to various facilities. I sincerely wish to express heartily thanks to my Project Guide Dr.Y.K. KANSE, for his encouraging and inspiring guidance his valuable suggestions were a constant source of inspiration for us. I wish to express my thanks to our Head Of Department Dr.S.S.Patil encouragement and providing me with the best facilities for my project work. Finally, I admit the cooperation, coordination and hard work are our keywords for success.

REFERENCES

1. Golam Tangim, Md. Foisal Mahedi Hasan, Md. Kafiul Islam, Md. Rezwanul Haque , University, Bangladesh, 2010
2. Dedy Wahyu Herdiyanto, and Istas Pratomo, "Passenger Authentication and Payment System Indonesia, 2016
3. Deepali Kayande¹, Sarita Saldanha, Sisil Sunny, and Bianca Alphonso, (ICPCSI-2017).
4. K.S.Vairavel, D.R.Jayashree and Manimekalai, ISSN: 2394-9333.