

STUDY ON EFFECT OF CURING FOR RED SOIL BASED GEOPOLYMER BRICKS

Ms. Thanu A R¹, Prof. Shivaraju G D², Prof. Usha S³

¹*Ms. Thanu A.R, Sri Siddhartha Institute of Technology*

²*Prof. Shivaraju G D, Sri Siddhartha Institute of Technology*

³*Prof. Usha S, Sri Siddhartha Institute of Technology*

Abstract – *The main problem facing the world today is pollution. In the construction industry, especially during the production of Portland cement, pollutants are emitted which lead to environmental pollution. In the present study, to make the geopolymer bricks, the ordinary Portland cement is fully replaced with fly ash and the fine aggregate is replaced with stone dust and alkaline liquids are used for the binding of materials. In this study an attempt is made to identify the optimum methodology of curing, by curing the red soil based geopolymer bricks with various curing temperature from 60°C to 120°C with a variation of 10°C for 24 hours in oven. From the optimum elevated temperature obtained, specimens are cured for 24 hours, 48 hours and 72 hours in oven and also comparative study is carried out between elevation curing and ambient curing. The specimens are tested for physical and durable aspects.*

Key Words: Red soil, Class C fly ash, Geopolymer Bricks, Compressive Strength, SEM analysis.

1. INTRODUCTION

Geopolymer brick is relatively new material that does not require OPC as a binder; instead, product components rich in silicon and aluminium are activated by alkaline solutions to generate bricks. Because of fly ash is high in aluminium oxide (Al₂O₃) and silica oxide (SiO₂), it can react with an alkaline activator solution to make geopolymer mortar.

The ideal temperature for geopolymer synthesis is between 25°C to 80°C. Geopolymers, on other hand, offer good mechanical qualities such as stiffness and compressive strength, as well as exceptional resistance to heat, acids and organic solvents. Despite recent advancements in the construction sector, bricks and blocks remain the most common building materials. When it comes to product selection, the traditional burnt bricks continue to reign supreme, with cost being the primary determining element.

1.1 Objectives

Study the effect of elevation curing for geopolymer bricks by varying temperature of 10°C from 60°C to 120°C in oven for 24 hours. By using above optimum temperature, study the effect of curing for 24hrs, 48hrs and 72hrs. And then Study

the effect of ambient curing of geopolymer bricks for 7 days, 14 days, 21 days and 28 days. Arriving a design chart for optimum method of curing for geopolymer composites.

2. MATERIALS AND METHODOLOGY

2.1 Materials

2.1.1 Geopolymer

Geopolymer was created by combining an aluminosilicate source with a strong alkali solution such as sodium hydroxide (NaOH) or potassium hydroxide (KOH) and a silicate solution such as sodium silicate or potassium silicate.



Geopolymer solution

2.1.2 Red soil

Red soil is a type of soil that grows well in warm, humid environment. They grow in deciduous forests and are most commonly seen in mixed forest. The features of red soil have a significant impact on strength, imperviousness, and anti-pest control. After conducting the tests, it was determined that red soil is suitable for use as an additive in concrete and can be utilised in the construction of structures.

Characterization of Red soil

| Sl. No | Test | Results |
|--------|------------------|---------|
| 1 | Specific Gravity | 2.62 |
| 2 | Liquid Limit | 34.12% |

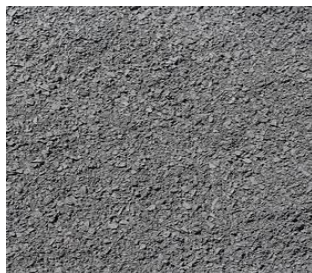
| | | |
|---|---------------|-----------|
| 3 | Plastic Limit | 17.78% |
| 4 | pH | 7.24 |
| 5 | Dry Density | 1.91gm/cc |



Red soil

2.1.3 Stone dust

Quarry dust and rock dust are other names for stone dust. Stone dust is a by-product produced by stone crusher operations. The use of stone dust in concrete can help to preserve natural river sand for future generations while also improving concrete quality.



Stone dust

2.1.4 Fly ash

Fly ash is a rich source of silica and alumina for geopolymers and is widely available across the world.



Fly ash

2.2 Methodology

After obtaining all of the necessary ingredients and characterising them for physical and chemical parameters in accordance with IS guidelines, prepare NaOH solution 8M

using NaOH pellets. By preparing the geopolymer precursor of NaOH to Na₂SiO₃ in a 1:2 ratio prior to use. And gently dry combine the red soil, fly ash, and stone dust in the proportions of 60:10:30. These dry mixes are completely blended with geopolymer precursor. Bricks are cast using geopolymer composite and given a day to achieve green strength. The casted specimens are then cured at a range of increased temperatures ranging from 60°C to 120°C with a 10°C variance and tested for compressive strength. From the above optimum temperature specimens are cured for various days from 1 to 3 days and tested for compressive strength.

The specimens are cured at ambient curing and specimens are tested for various days (7, 14, 21, 28 and 90 days). Arriving at design chart for optimum curing methodology for geopolymer composites. And the Structural integrity is carried out for the strength varied specimens, to identify the formation of chemical composition with the effects of curing.



Preparation of geopolymer solution





Dry mixing of materials



Brick Specimen



Placing of mixed materials in mould



Removing the specimen from the mould

2.3 Tests on bricks

The various tests carried out to obtain the properties of bricks are listed below. The characteristics of the bricks is obtained by conducting different tests on it which includes

1. Compressive strength
2. Water absorption tests
3. Alternative wetting and drying test
4. Durability test
 - i) sulphate resistance test
 - ii) Chloride - ion diffusion test
5. Scanning Electron Microscope (SEM)

2.3.1 Compressive strength test

After a certain curing time, the dimensions of the sample were measured with vernier callipers and the total mass was determined with an electronic balance. The specimen was then mounted in a tri axial testing frame to determine the unconfined compressive strength. The load was applied at strain rate of 1.2mm/minute until failure. As previously mentioned, three identical specimens were prepared for each mix proportions. The reported compressive strength for each sample is the average of three measurements.



2.3.2 Water absorption test

The specimen was selected in random which are cured at 28 days and oven dried at 110°C at which it gains the substantial constant mass. Once it attains the room temperature after cooling, the mass of specimens was taken as M_1 . The dried specimen is then immersed in water for 24 hours. After which the brick is taken out from the water and wiped with a damp cloth and mass of that brick is taken as M_2

The percentage of water absorption is obtained as

$$\text{Water absorption} = (M_2 - M_1) / M_1 \times 100\%$$

2.3.3 Alternate wetting and drying test

The dry weight of the brick specimen subjected to testing is measured. After which the specimen is immersed in water for 24 hrs and then the mass of the brick is noted. The brick specimen is then oven dried at 110°C for 24 hrs and again the mass is noted which completes one cycle, the same procedure is carried up to 7 cycles. The compressive strength of the brick after 7 cycles is obtained by compressive testing machine.

2.3.4 Durability test

Among several deterioration process, destructive attack by various chemical considered are

- i) Sulphate resistance test
- ii) Chloride-ion diffusion test

i) Sulphate resistance test

As per the experiment 5% $MgSO_4$ solution is formed by diluting 5g of $MgSO_4$ particles in 100 ml of distilled water. To submerge the entire brick in the solution, prepare the required amount of $MgSO_4$ solution. After 28 days, the bricks are removed from the solution, cleaned with a damp cloth and tested for compressive strength.

ii) Chloride-ion diffusion test

The chloride solution is prepared by diluting 5g of NaCl in 100ml of distilled water i.e, 5% solution and the brick is immersed in the solution completely. After 28 days of soaking in the solution the compressive strength check is done on the brick.

2.3.5 Scanning Electron Microscope (SEM)

Surface morphology of Red soil and geopolymer composite blocks were examined utilizing SEM instrument at Siddaganga Institute Of Technology, Tumkur. On the basis of results, we concluded that, it show agglomeration of sodium silicates.

3. RESULTS AND DISCUSSION

Red temperature soil based specimen

Specimen type and ratio : Brick and 1:2 ($NaOH : Na_2SiO_3$)

3.1 Compressive strength after 24 hours oven curing at elevated

| Trial No. | Temperature (°C) | Avg. compressive strength (N/mm ²) |
|-----------|------------------|--|
| 1 | 60°C | 4.23 |
| 2 | 70°C | 5.46 |
| 3 | 80°C | 3.56 |
| 4 | 90°C | 3.47 |
| 5 | 100°C | 1.27 |
| 6 | 110°C | 2.18 |
| 7 | 120°C | 1.50 |

Table : 3.1

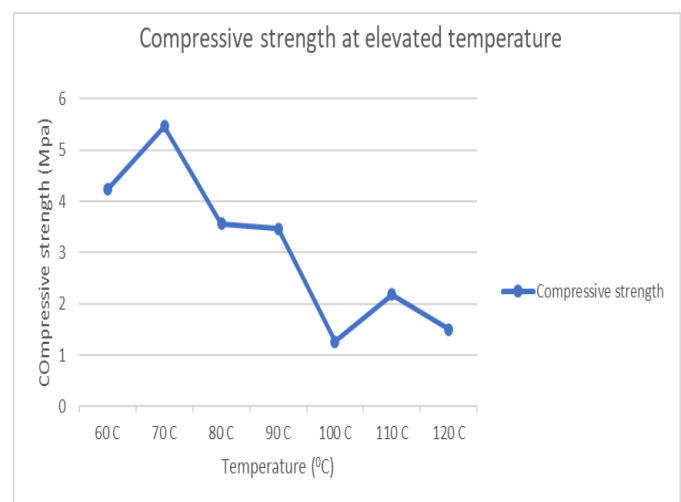


Fig 3.1 : graph on compressive strength after 24 hours oven curing at elevated temperature

Observation:

The strength increased by 29.07% when the temperature was raised from 60°C to 70°C, and then fell by 15.83% when the temperature was raised by 10°C to 80°C. The strength has been reduced as the temperature has been raised. As a result, 70°C is regarded as the optimum curing temperature.

3.2 Water absorption test

Compressive strength after 24 hours of water absorption

| Trial no | Temperature (°C) | Avg. compressive strength (N/mm ²) |
|----------|------------------|--|
| 1 | 60°C | 4.17 |

| | | |
|---|-------|------|
| 2 | 70°C | 4.80 |
| 3 | 80°C | 4.00 |
| 4 | 90°C | 3.62 |
| 5 | 100°C | 3.55 |
| 6 | 110°C | 3.44 |
| 7 | 120°C | 3.40 |

Table : 3.2

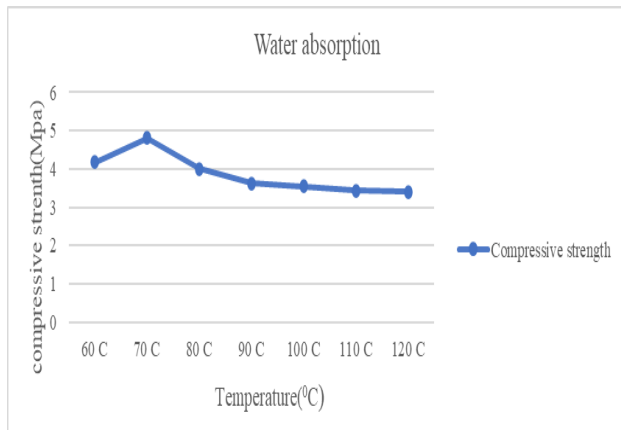


Fig 3.2 : graph on compressive strength after 24 hours of water absorption

Observation:

The strength increased by 15.10% when the temperature was raised from 60°C to 70°C. When the temperature was raised again by 10°C to 80°C, the strength decreased by 4.07%. The strength has decreased as the temperature has been raised. As a result, 70°C is regarded as the optimum curing temperature.

3.3 Compressive strength after Alternative drying and wetting test

| Trial no | Temperature (°C) | Avg. compressive strength (N/mm ²) |
|----------|------------------|--|
| 1 | 60°C | 5.64 |
| 2 | 70°C | 5.77 |
| 3 | 80°C | 5.56 |
| 4 | 90°C | 3.37 |
| 5 | 100°C | 3.96 |
| 6 | 110°C | 3.44 |
| 7 | 120°C | 3.40 |

Table : 3.3

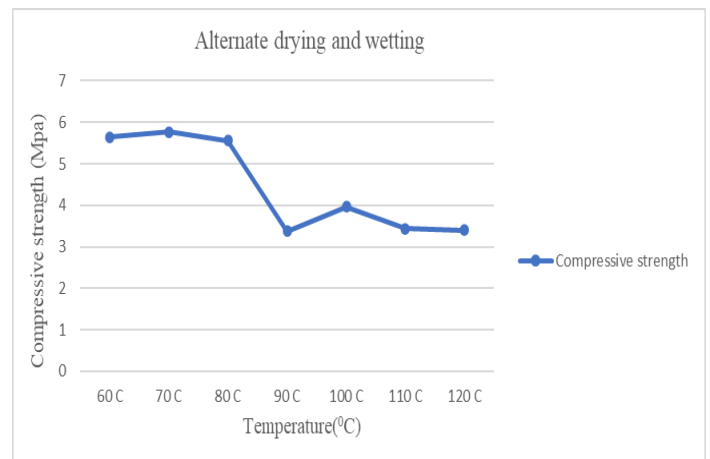


Fig 3.3: graph on compressive strength after alternative drying and wetting test

Observation:

The strength increased by 2.30% when the temperature was raised from 60°C to 70°C. When the temperature was raised again by 10°C to 80°C, the strength decreased by 1.42%. The strength has decreased as the temperature has been raised. As a result, 70°C is considered as the optimum curing temperature.

3.4 Compressive strength after Sulphate attack test

| Trial No | Temperature (°C) | Avg. compressive strength (N/mm ²) |
|----------|------------------|--|
| 1 | 60°C | 2.00 |
| 2 | 70°C | 3.15 |
| 3 | 80°C | 1.45 |
| 4 | 90°C | 1.55 |
| 5 | 100°C | 1.39 |
| 6 | 110°C | 2.15 |
| 7 | 120°C | 1.61 |

Table : 3.4

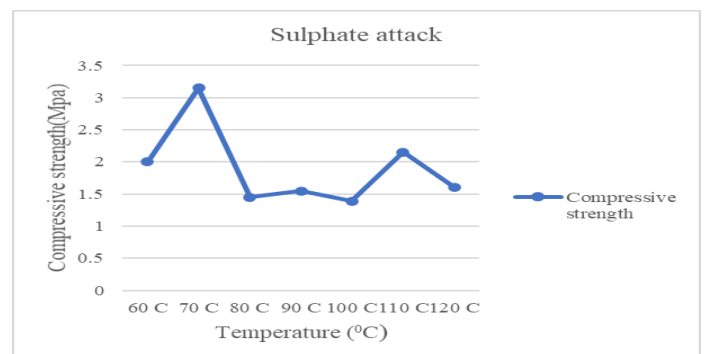


Fig 3.4: graph on results of compressive strength after sulphate attack test

Observation:

The strength increased by 57.5% when the temperature was raised from 60°C to 70°C. When the temperature was raised again by 10°C to 80°C, the strength decreased by 27.5%. The strength has decreased as the temperature has been raised. As a result, 70°C is regarded as the optimum curing temperature.

3.5 Compressive strength after Chloride attack test

| Trial No | Temperature (°C) | Avg. compressive strength (N/mm ²) |
|----------|------------------|--|
| 1 | 60°C | 2.79 |
| 2 | 70°C | 3.72 |
| 3 | 80°C | 2.21 |
| 4 | 90°C | 1.78 |
| 5 | 100°C | 1.84 |
| 6 | 110°C | 2.49 |
| 7 | 120°C | 2.34 |

Table : 3.5

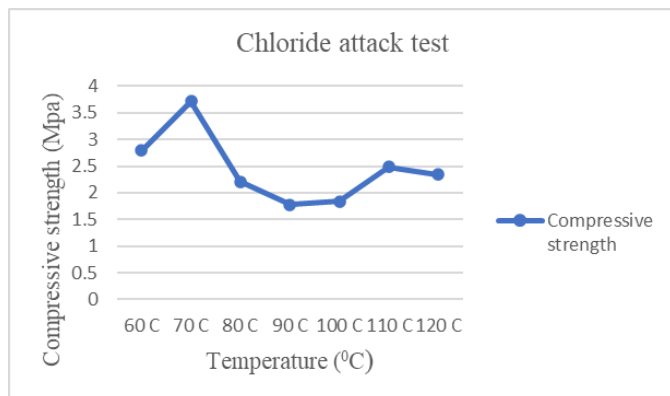


Fig 3.5 : Graph on results of compressive strength after chloride attack test

Observation:

The strength increased by 33.33% when the temperature was raised from 60°C to 70°C. when the temperature was raised again by 10°C to 80°C, the strength decreased by 26.24%. The strength has decreased as the temperature has been raised. As a result 70°C is regarded as the optimum curing temperature.

3.6 Compressive strength test at optimum temperature of 70°C

| Trial No | No of hours | Avg. Compressive strength (N/mm ²) |
|----------|-------------|--|
| 1 | 24 | 5.45 |
| 2 | 48 | 4.45 |

| | | |
|---|----|------|
| 3 | 72 | 3.46 |
|---|----|------|

Table : 3.6

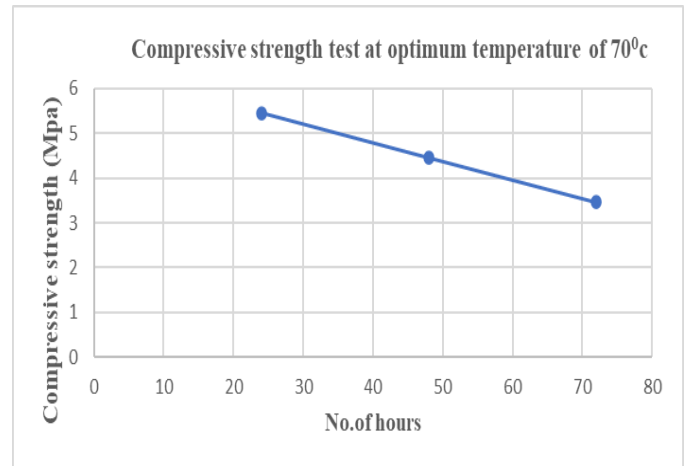


Fig 3.6 : Graph on results of compressive strength test at optimum temperature of 70°C

Observation:

The specimens are cured for 70°C for 24hrs, 48hrs and 72hrs, but as the number of hours in the oven increases, the strength decreases, with a compressive strength of 36.51%. As a result, 24hrs of 70°C curing in the oven is regarded optimum temperature Curing.

3.7 Ambient curing brick specimens test results : 3.7.1 Compressive strength for ambient curing

| Trial No | No of days | Avg. compressive strength(N/mm ²) |
|----------|------------|---|
| 1 | 7 | 2.58 |
| 2 | 14 | 3.62 |
| 3 | 21 | 4.56 |
| 4 | 28 | 6.22 |

Table : 3.7.1

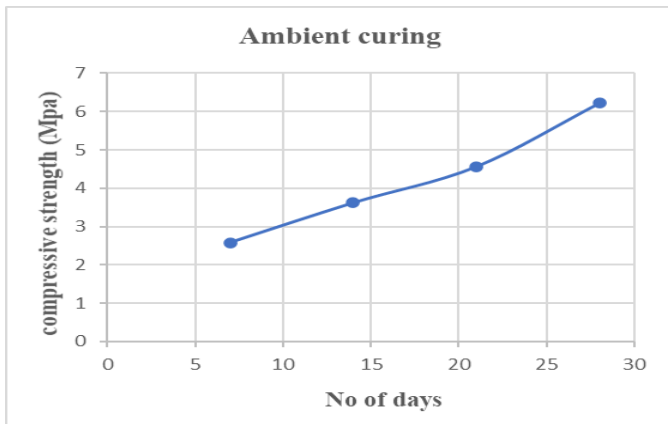


Fig 3.7.1 : Graph on results of compressive strength of ambient curing

Observation:

The strength has gradually increased as the number of days of curing has increased, at the end of 28 days, the strength has increased to 141.08%.

3.7.2 Water absorption of ambient curing bricks after 28days.

| Trial No | Compressive strength | Avg. compressive strength(N/mm ²) |
|----------|----------------------|---|
| 1 | 4.98 | 4.97 |
| 2 | 4.96 | |
| 3 | 4.98 | |

Table : 3.7.2

Observation:

- Compressive strength was decreased by 20.09% after water absorption.

3.7.3 Alternate drying and wetting test of ambient curing bricks after 28 days.

| Trial No | Compressive strength | Avg. compressive strength(N/mm ²) |
|----------|----------------------|---|
| 1 | 4.30 | 4.25 |
| 2 | 4.20 | |
| 3 | 4.25 | |

Observation:

- Compressive strength was decreased by 31.67% after alternate drying and wetting test.

3.7.4 Sulphate attack test of ambient curing bricks after 28 days

| Trial No | Compressive strength | Avg. compressive strength(N/mm ²) |
|----------|----------------------|---|
| 1 | 3.20 | 3.12 |
| 2 | 3.00 | |

| | | |
|---|------|--|
| 3 | 3.15 | |
|---|------|--|

Table : 3.7.4

Observation:

- Compressive strength was decreased by 49.89% after sulphate attack test.

3.7.5 Chloride attack test of ambient curing bricks after 28days

| Trial No | Compressive strength | Avg. compressive strength(N/mm ²) |
|----------|----------------------|---|
| 1 | 4.12 | 4.15 |
| 2 | 4.18 | |
| 3 | 4.16 | |

Table : 3.7.5

Observation:

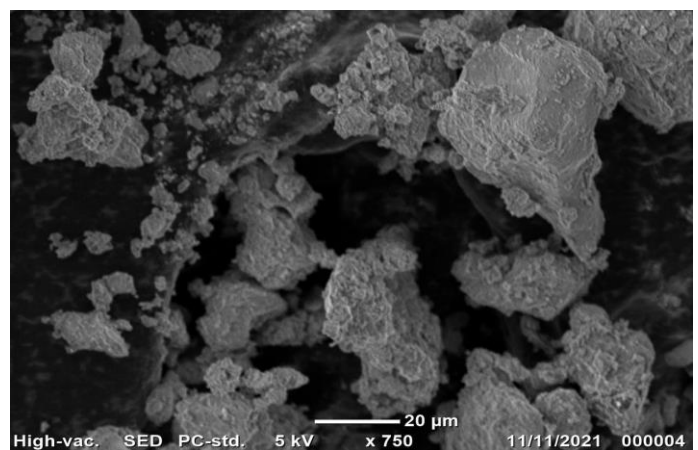
- Compressive strength was decreased by 33.27% after chloride attack test.

4. Scanning Electron Microscope (SEM)

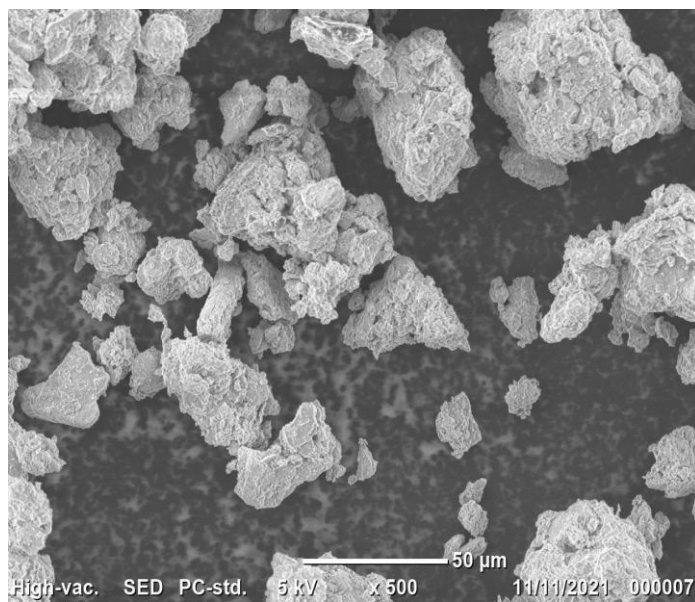
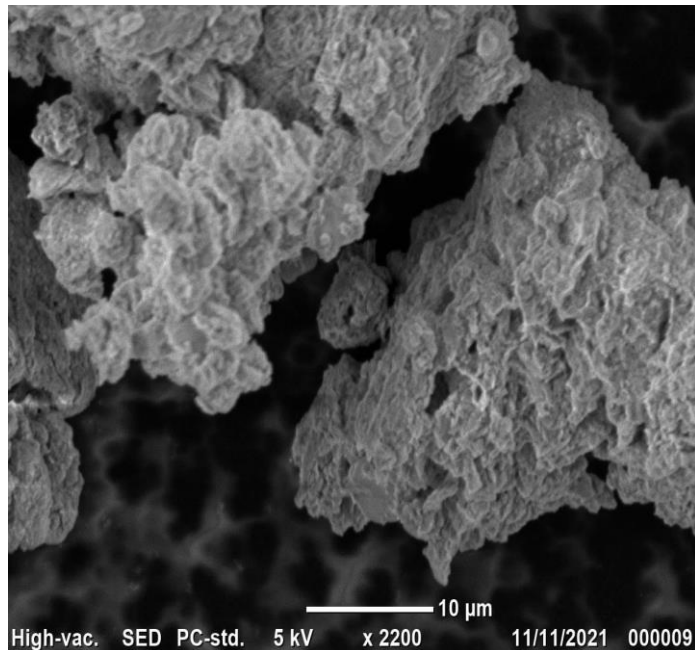
Surface morphology of red soil and geopolymer composite blocks were examined utilizing SEM instrument at Siddaganga Institute of Technology, Tumkur.

On the basis of results, we concluded that, it show agglomeration of sodium silicate

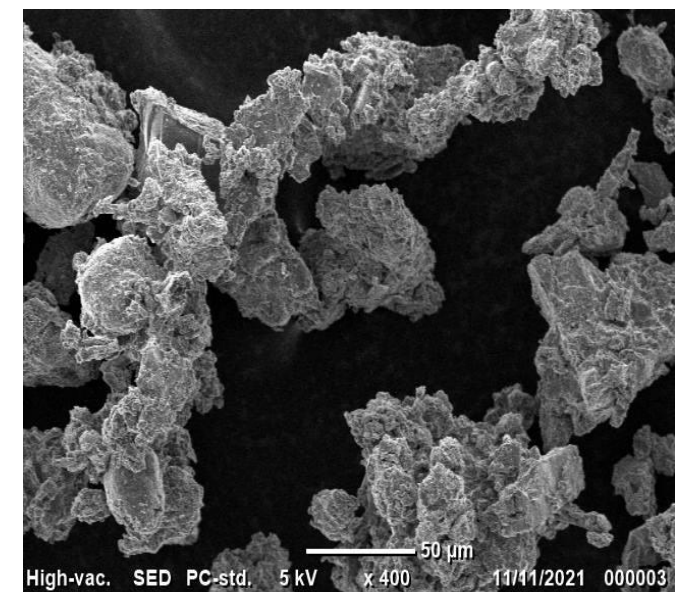
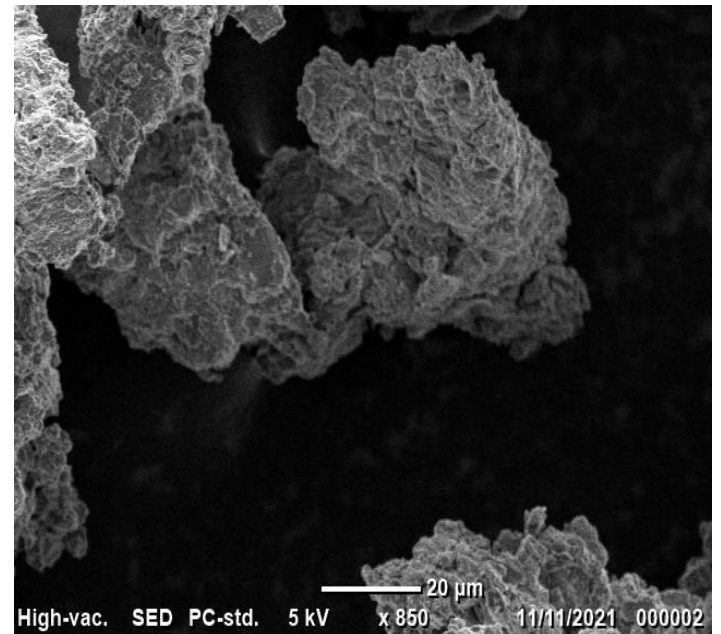
i) SEM analysis for 70°C curing bricks at 24hrs



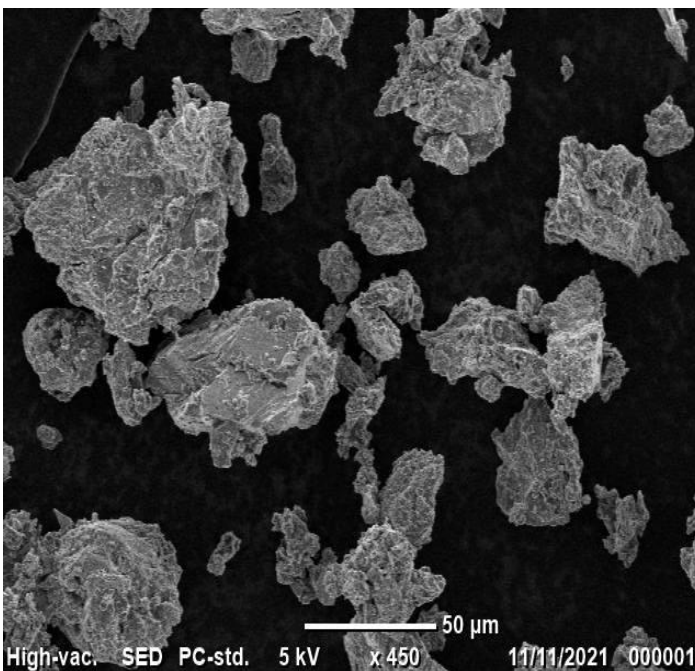
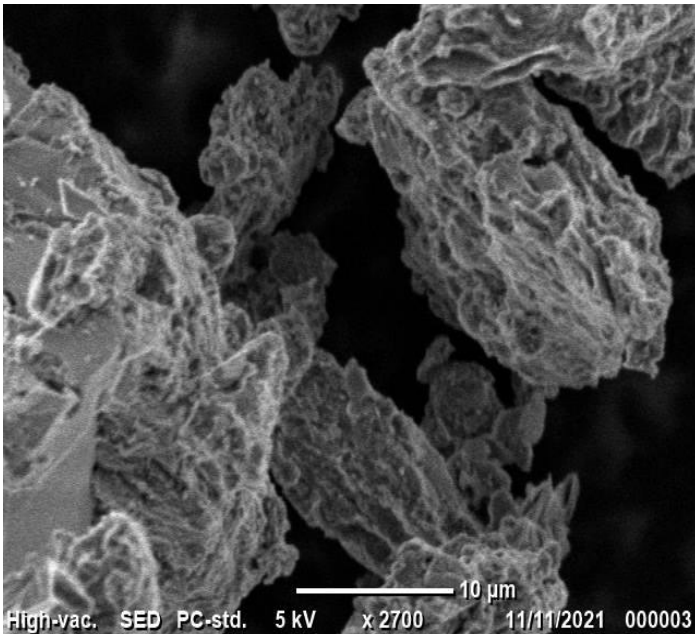
ii) SEM analysis for 70°C curing bricks at 72hrs



iii) SEM analysis for 120°C cured geopolymer bricks



iv) SEM analysis for 28days ambient cured geopolymer bricks



5. CONCLUSIONS

The following conclusions can be drawn for the project:

- Specific gravity of materials used are Red soil - 2.62, Stone dust - 2.41, Fly ash - 2.41.
- The Liquid limit and plastic limit of red soil obtained was 32.7% and 17.78% respectively.
- In this study, it observed that, the compressive strength increases in oven curing temperature 70°C

and decreases with further increases in the temperature gradually.

- The 70°C of curing for 24 hrs given better strength compare to other curing temperature.
- The increasing the days of curing in oven 1 to 3 days shown decrease in strength.
- 70°C for 24 hrs oven curing is considered as optimum temperature.
- Ambient curing shows that strength increase gradually for 7 to 28 days.
- Ambient curing shows better strength than oven curing.

FURTHER SCOPE OF WORK

- The project is the study on geopolymer brick with red soil, stone dust and fly ash was carried out. Here geopolymer can be used in concrete and its behaviour can be identified.
- Both Stone dust and fly ash are major waste materials. Like this, many other materials are also present globally. Therefore, research is required to be carried for other waste materials.

REFERENCES

- 1] Shankar H. Sanni, Khadiranaikar R.B “ Performance of Geopolymer concrete under sever environmental conditions”. International journal of civil and structural engineering. 2012
- 2] E. Kalu et al “Polymer reinforced laterite for building materials “ 2013.
- 3] Mo Zhang et al “Experimental feasibility study of geopolymer as the next generation soil stabilization”. 2013.
- 4] Gokhan Gorhan et al “ The influence of NaOH solution on the properties of fly ash based geo polymer composite mortar cured at different temperature” 2013.
- 5] Padiga Akhilesh et al “ Study of properties of GPC compared with OPC” 2013.
- 6] L. Krishnan, S. Karthikeyan, S. Nathiya, K. Suganya, “Geopolymer concrete an eco-friendly construction material”. International journal of research in engineering and technology, NCAMESHE-2014.
- 7] Tinayu Xie, Togay Ozbakkalgu, “Behaviour of low calcium fly and bottom ash based Geopolymer concrete cured at ambient temperature” ceramics international 2015.
- 8] Weibo Ren, Jinyu Xu, Junliang Liu, Haoyang Su, “Dynamic mechanical properties of Geopolymer concrete after water immersion”. Ceramics international 2015.
- 9] Venugopal K, Radhakrishna, Vinod sasalatti, “Development of alkali activated solid and hollow Geopolymer masonry bricks”. IOP conf. series: Materials science and engineering 2016.
- 10] Kolli. Ramujee, M. Potharaju, “Mechanical properties of Geopolymer concrete composites” 5th International

Conference of materials processing and characterization 2016.

11] C. D. Udawattha, A.V.R.D Lakmini, and R.U Halwatura, "Fly ash based Geopolymer mud concrete block" Moratuwa engineering research conference 2018.

12] Arvind Kumar Jha , Dhanraj Kumar , P. V. Sivapullaiah "Influence of Fly Ash on Geotechnical Behaviour of Red Mud" Geotech Geol Eng 2020.

13] M.R Sudhir, M. Beulah, P. Sasha Rai, G. Gayathri "A microstructure exploration and compressive strength determination of red mud bricks prepared using industrial wastes "Elsevier, materials today: proceedings 2020.

14] H. Madani, A.A Ramezaniapour , M. Shahbazinia, E. Ahmadi " Geopolymer bricks made from less active waste materials " Elsevier , Construction and building materials 2020.

15] M. Jothilingam, V. Preethi "Feasibility, Compressive strength and utilization of redmud in geopolymer concrete for sustainable constructions" Elsevier, materials today : proceedings 2021.

16] R. Anu, S. Thirugnanasambandam "Development of Ambient cured geopolymer bricks" International Journal of Advanced Research in Engineering and Technology 2021.