

## Pushover Analysis of RC Buildings Using SAP-2000

KUNJITA DASHORE\*, SUMIT PAHWA\*\*, MURTAZA SAFDARI\*\*\*, SUNINDA PARMAR\*\*\*

\*M.Tech Scholar, Department of Civil Engineering, Alpine institute of Technology Ujjain

\*\*Associate Professor, Department of Civil Engineering, Alpine Institute of Technology, Ujjain

\*\*\*Assistant Professor, Department of Civil Engineering, Alpine Institute of Technology, Ujjain

**ABSTRACT:** In this investigation the analysis of G+4, G+11 and G+21 building is situated in New Delhi (Zone IV). The seismic analysis of G+4, G+11 and G+21 building as per IS 1893-2002. In this research pushover analysis was performed in SAP 2000 and after that is designed as per IS 456-2000 for different loads. This analysis gives better understanding seismic performance of building & also shows damage or failure of buildings. The building performance level is determined by pushover curve & demand curve. The result shows that the failure is noticed in the column of ground storey of the building. After that enlarged amount of reinforcement in the ground story the buildings have reached life safety performance level.

**Keywords:** Pushover curve, capacity spectrum, demand spectrum, IS 1893:2002, STAAD Pro, SAP2000

### I. INTRODUCTION

To ensure the safety purpose the different IS codes of buildings define design requirements of structure. We usually witness the natural disaster effects on buildings even designed based on building codes. Before constructing the structure we have to check the story drift, nodal displacement at the roof level and the capacity before the building fails for certain ground motions. The safety of non-structural elements can be ensured through PBE with enhance in expenditure of the construction. Therefore, PBE is the method or approach used by design specialists to construct buildings that possess functionality and the continued availability of services.

The PBE methodology is not going to be the instant replacement for design to the traditional code methods

### II. OBJECTIVE OF STUDY

The objective of the present study is as follows:

1. Design G+4, G+11 and G+21 multistoried buildings in STAAD pro as per IS-456-2000 different loads.
2. The main objective is to perform pushover analysis in SAP2000 to get the seismic response of the structure.
3. The main objective is to check whether the building designed by standard codes is safe under earthquake loads.

### III. MODELLING APPROACH

#### Modelling

The Building is designed as per IS 456-2000. The dimensions of building is

Dimension of Beams: 600x800mm

Ground floor columns: 1000x1000mm

Other floors: 800x800mm

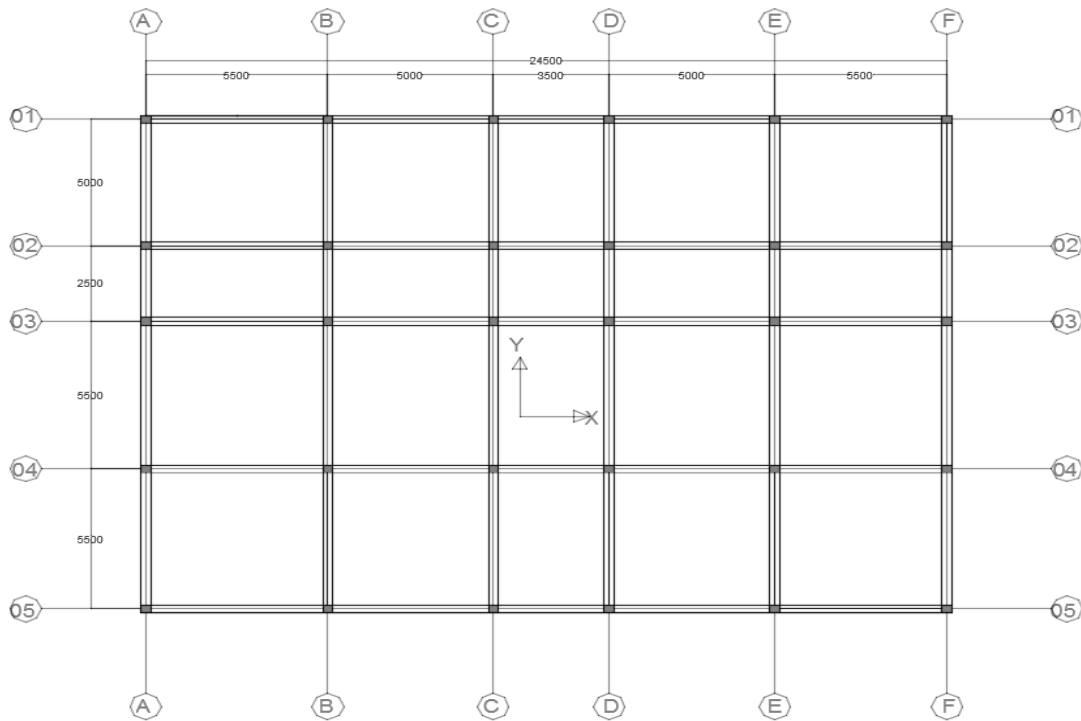


Figure 3.1 showing the plan the building

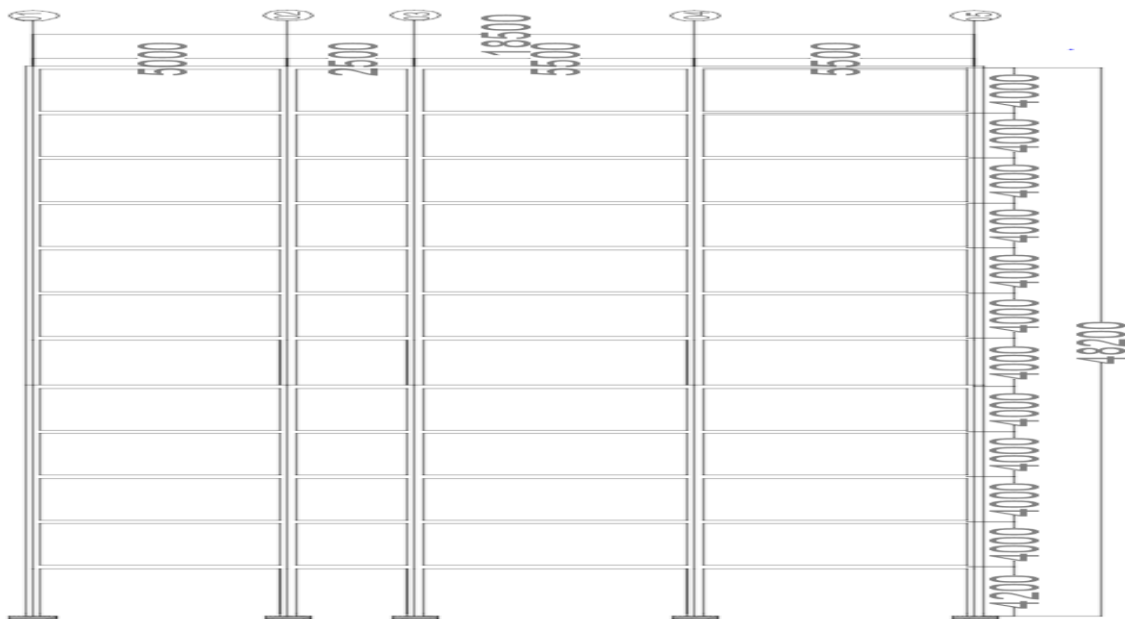


Figure 3.4 Section A-A of 12 Story Building

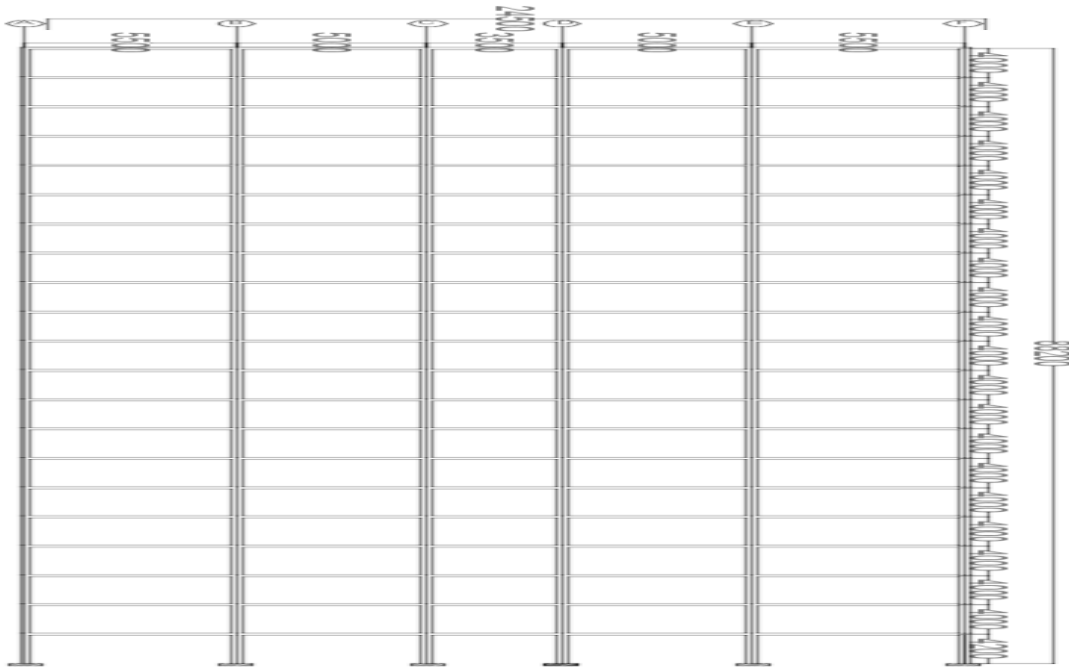


Figure 3.6 Section 1-1 of 22 Story Building

### 3.5 Loads on the structure

As per IS 456-2000 & IS 1893-2002 the structure is analyzed and designed for live load, seismic load. The subsequent figures show the different loads acting on the building.

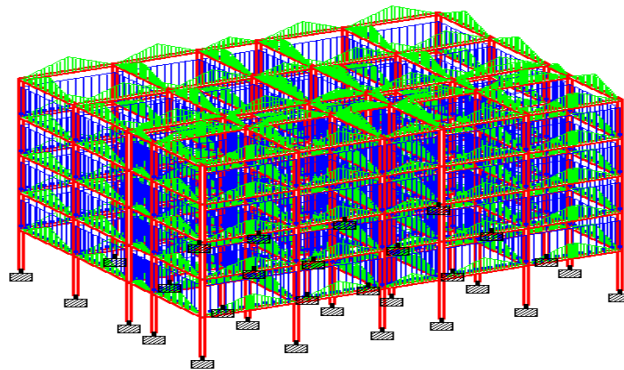


Figure 3.9 illustrating the brick infill load acting on the beams

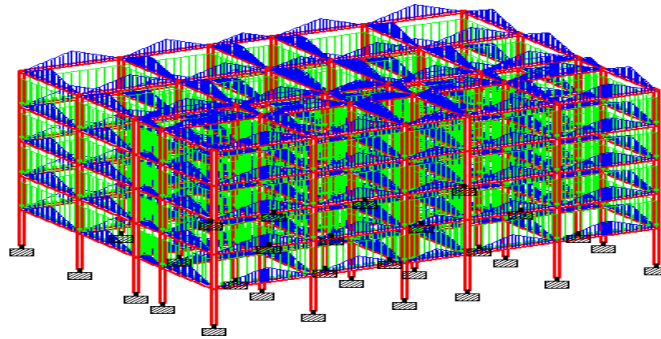


Figure3.10 illustrating the floor load acting on the slabs

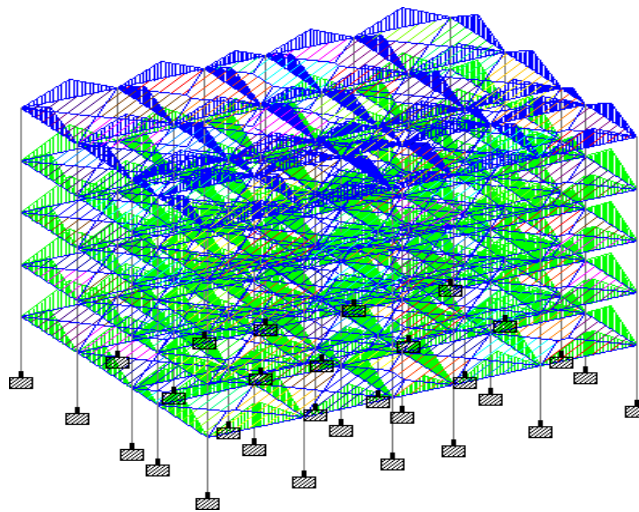


Figure3.11 Illustrates the Live Load acting on the Roof

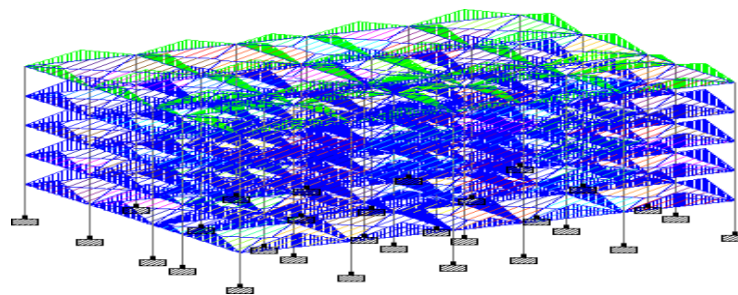


Figure3.12 illustrates the live Load acting from 1<sup>st</sup> floor to the 4<sup>th</sup>

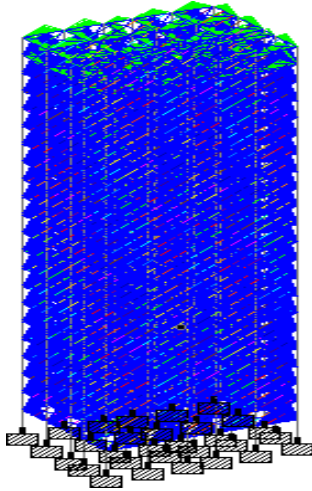


Figure 3.13 showing live load acting

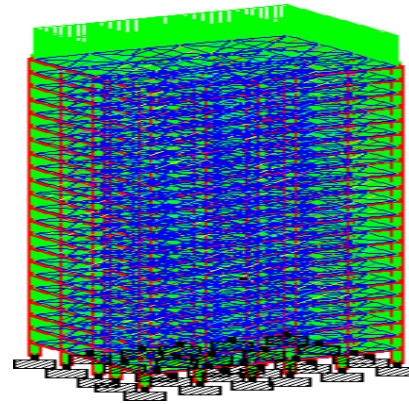


Figure 3.14 showing self-weight acting on 22 story building on 22 story building

#### IV. RESULTS

##### Results of RCC Design:

##### RC Design of G+4 Building

The details of 5 story building are given below:

Beams=300mmx450mm

Columns=450mmx450mm

Concrete Grade=M30

Steel Grade=Fe415 HYSD bar

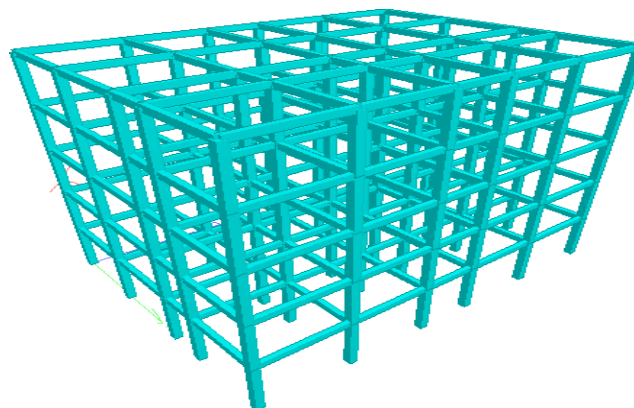


Figure 4.1 showing the 3D model of the building

##### Detailing of beams

Dimension of Beam= 450mmx300mm.

Grade of concrete= M-30

FE-415 Steel is used

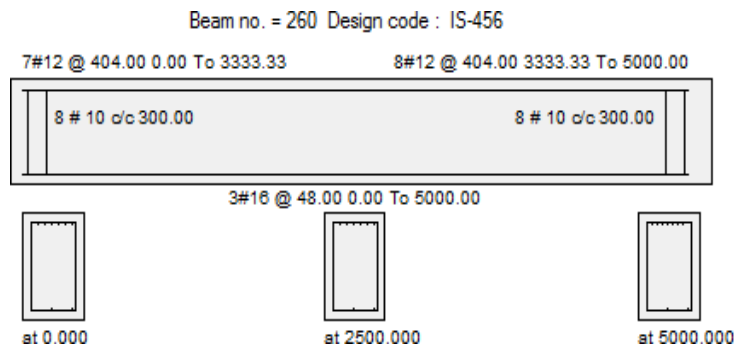


Figure4.2showingthereinforcementdetailingof beam of G+4

### Detailing of columns

Dimension of Beam= 450mmx450mm.

Grade of concrete= M-30

FE-415 Steel is used

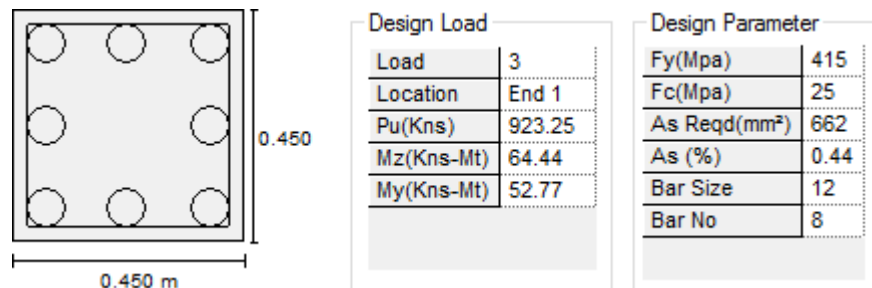


Figure4.3 showing the reinforcement detailing of column of G+4

### RC Design of G+11 Building

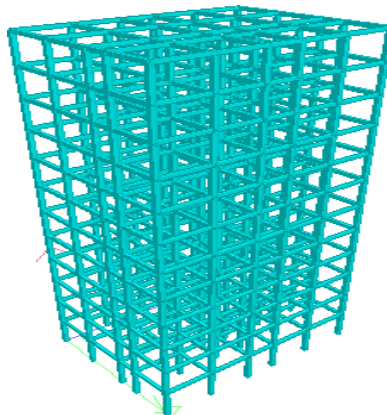


Figure4.4 Showing the STAAD pro Model of G+11

### Detailing of beams

Dimension of Beam= 450mmx300mm.

Grade of concrete= M-30

FE-415 Steel is used

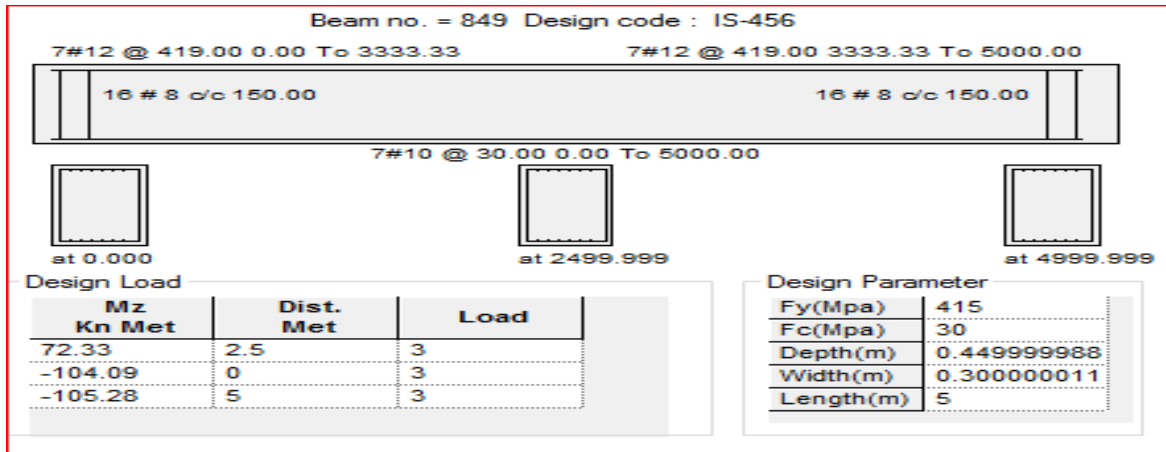


Figure4.5 showing the reinforcement detailing of beam of G+1

### Detailing of columns

Dimension of Beam= 450mmx450mm.

Grade of concrete= M-30

FE-415Steel

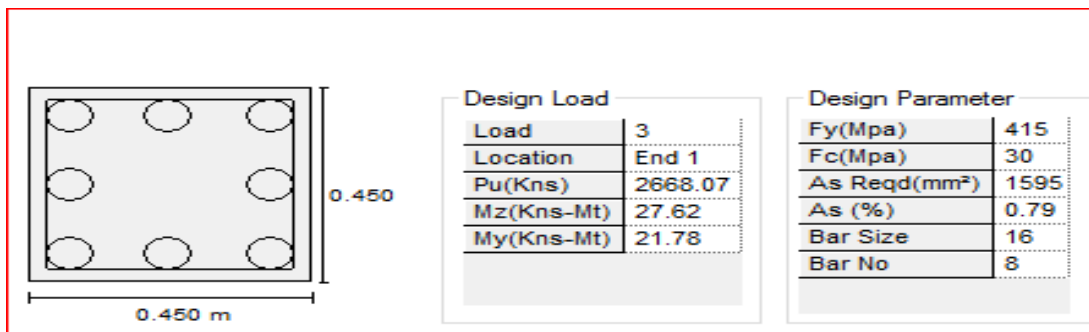
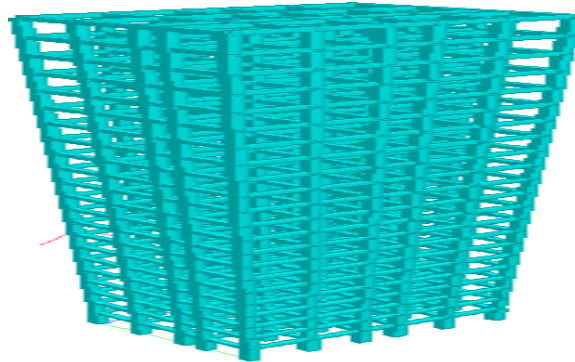


Figure4.6 showing the reinforcement detailing of column of G+1



**RCDesignofG+21Building**



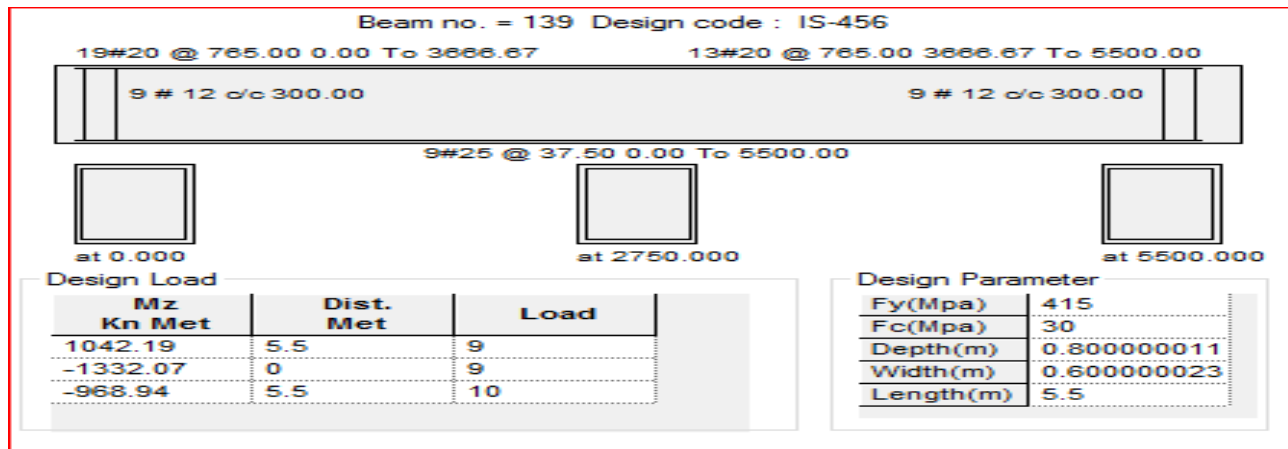
**Figure4.7ShowingtheSTAADProModelof G+21**

**Detailing of beams**

Dimension of Beam= 450mmx300mm.

Grade of concrete= M-30

FE-415 Steel is used



**Figure4.8 showing the reinforcement detailing of beam of G+21**

**Detailing of columns**

Dimension of Column= 800mmx800mm.

Grade of concrete= M-30

FE-415 Steel is used

The following figure shows the reinforcement details taken from STAAD Pro.

The following figure shows the column reinforcement for G+22 Building, this column developed the first plastic hinge.



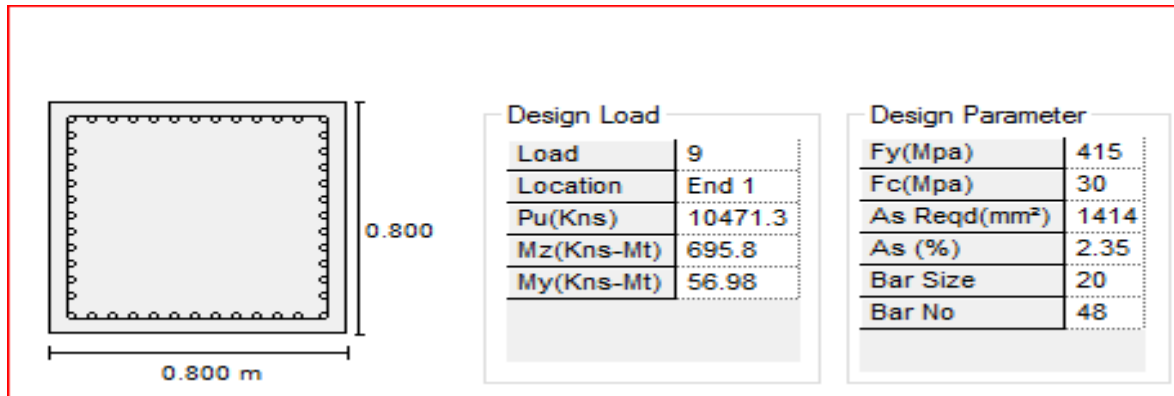


Figure 4.9 showing the reinforcement detailing of column of G+21

**Pushover Analysis Results:**

**The Pushover analysis of G+4 RC Building**

The graph plot between the Pushover curve base shear vs lateral displacement.

The Design base shear (VB) was found to be 1742 in chapter 3 and the capacity is 2900KN which is much higher, hence the building is safe for this level of earthquake.

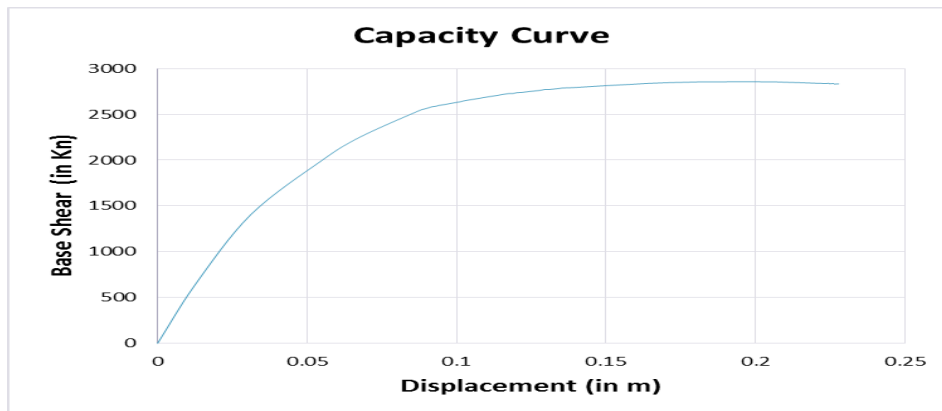


Figure 6.1 shows the pushover curve

Table 6.1 the conclusion from Performance point of G+4

Base shear(KN)	2679.179	Roof displacement (m)	0.108
Spectral Acceleration, Sa (m/s)	0.488	Spectral displacement, Sd(m)	0.082
Effective time period, Teff(s)	0.823	Effective damping, βeff	0.189

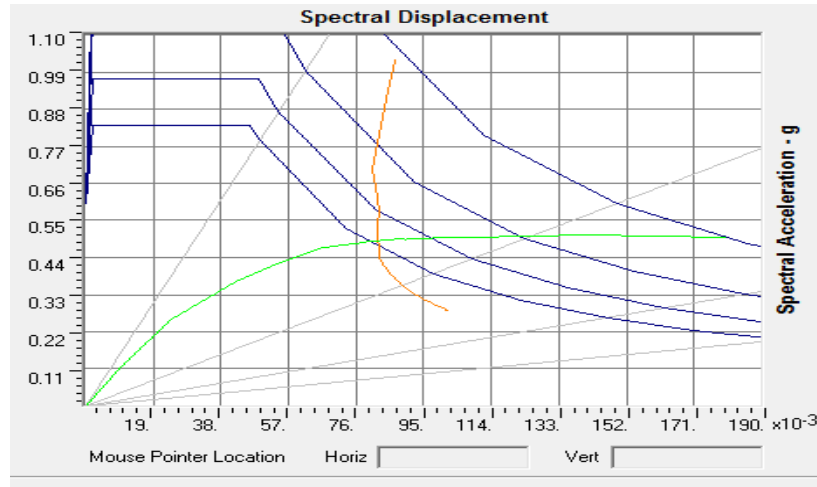


Figure 6.4 showing the performance point

**The Pushover analysis of G+11 RC Building**

The graph plot between the Pushover curve base shear vs lateral displacement.

From the graph value of base shear was found to be 4364KN and the capacity from the plot is 4800KN which is higher, hence the performance of the building for this level earthquake is acceptable.

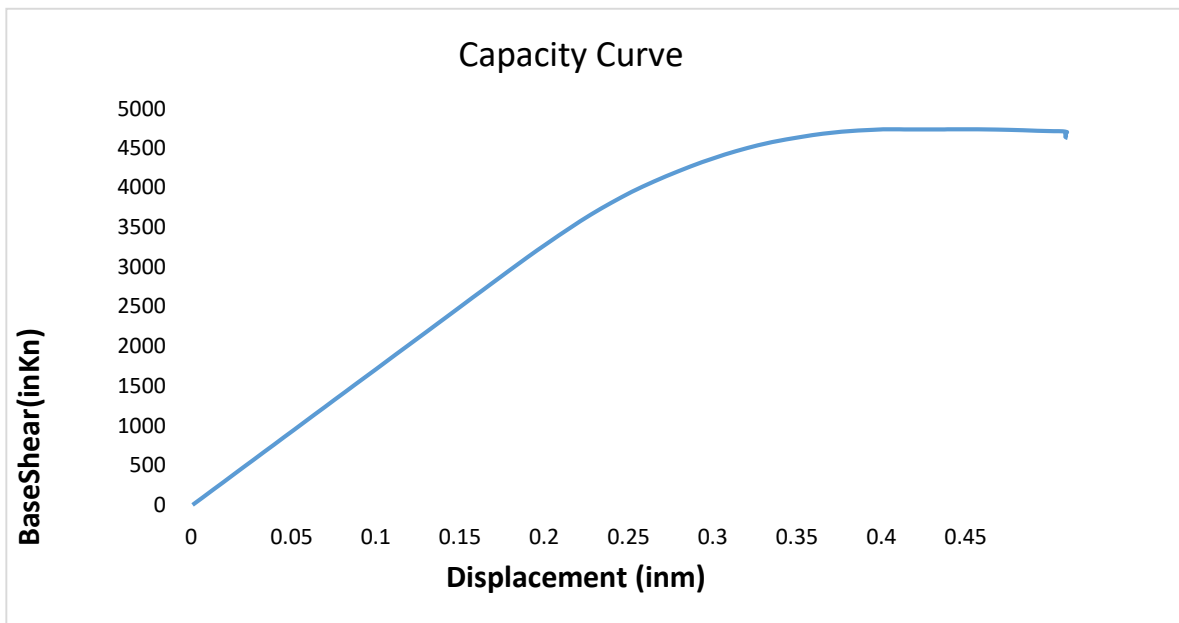
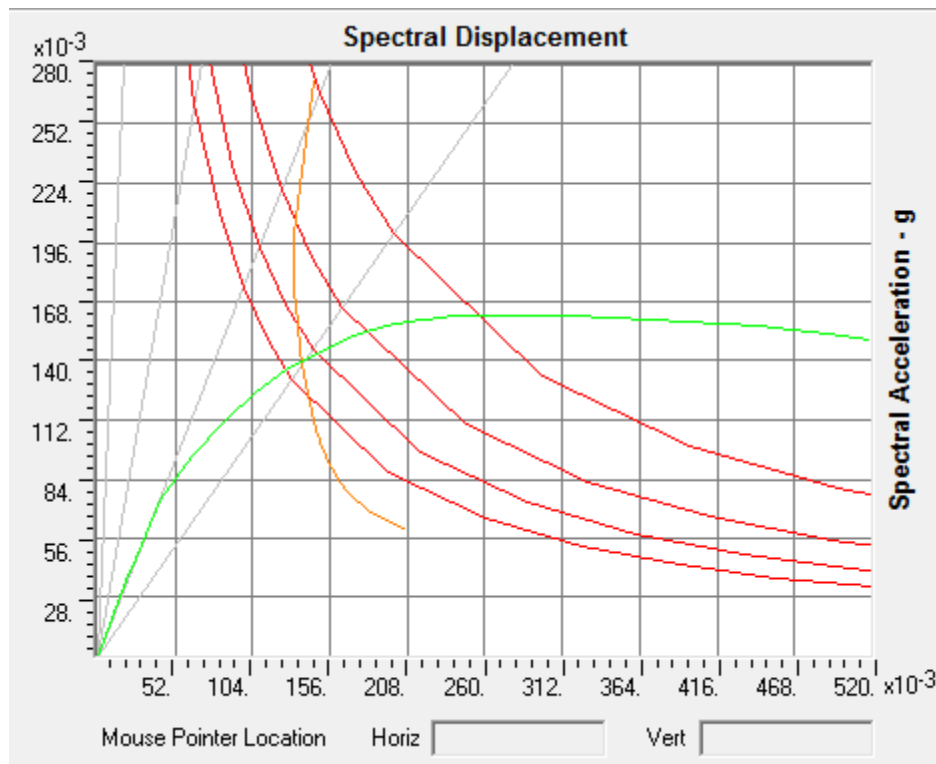


Figure6.5 Pushover curve (base shear vs displacement) for 12 Story Building

**Table6.2 the conclusion from Performance point of G+11**

Base shear(KN)		4415.444	Roof displacement (m)	0.166
Spectral Acceleration, Sa (m/s)		0.140	Spectral displacement, Sd(m)	0.137
Effective time period, Teff(s)	1.986	Effective damping, $\beta_{eff}$	0.170	



**Figure6.8showingintersectionofDemandandcapacitycurve (Performancepoint)**

#### 6.4 The Pushover analysis of G+21 RC Building

The graph plot between the Pushover curve base shear vs lateral displacement.

From the graph the value of base shear was found to be 11421 KN and the capacity from the plot is 12382 KN which is higher, hence the performance of the building for this level earthquake is acceptable.

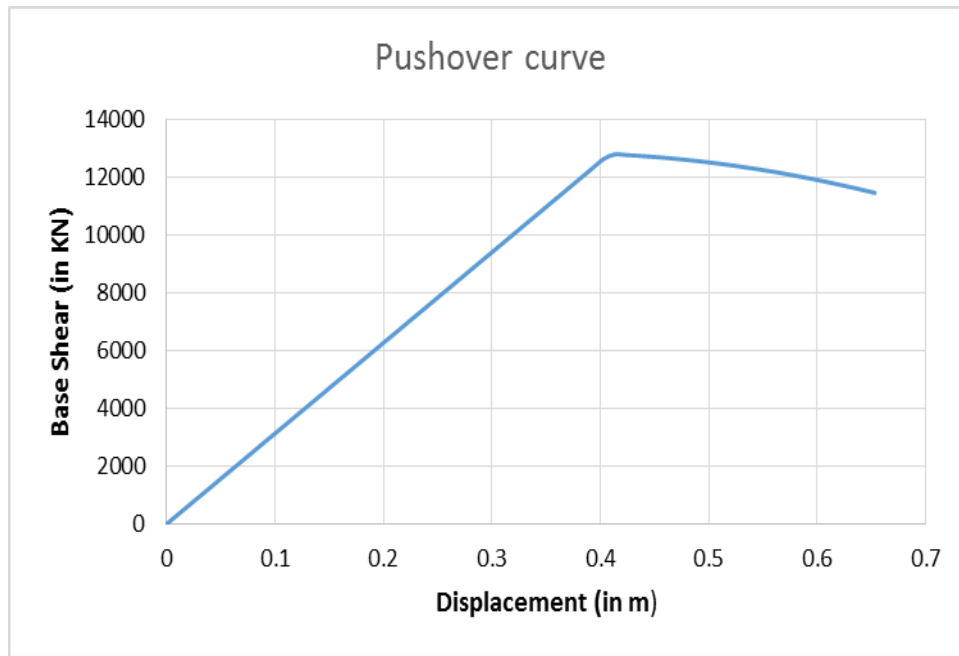


Figure 6.9 Pushover curve (base shear vs displacement) for 22 Story Building

Table 6.3 the conclusion from Performance point of G+21

Base shear(KN)	12021.25	Roof displacement (m)	0.381
Spectral Acceleration, Sa (m/s)	0.138	Spectral displacement, Sd(m)	0.236
Effective time period, Teff(s)	2.131	Effective damping, βeff	0.168

### 6.5 Comparing the Results

From the above results it is clear that the capacity of G+4, G+11 and G+21 RCC buildings are higher than design base shear. Hence the performance at this point is acceptable

Table 6.4 showing the comparison of capacity and design base shear of three buildings

	G+4 RC Building	G+11 RC Building	G+21 RC Building
Design Base Shear (VB)	1742 KN	4364 KN	11421 KN
Capacity of Performance Point	2679.179 KN	4415.44 KN	12021.25

## V. CONCLUSIONS

After analysis all the results the following conclusion has been drawn:

1. From the above results it is clear that the capacity of G+4, G+11 and G+21 RCC buildings are higher than design base shear
2. Considering three different RC building it was concluded if the buildings are designed with proper sections and reinforcement details as per standard codes will perform better under seismic forces.

## REFERENCES

1. Andrew John Pierre, IrpanHidayat (2020): Seismic performance of reinforced concrete structures with pushover analysis IOP Conference Series: Earth and Environmental Science 426 (2020) 012045 doi:10.1088/1755-1315/426/1/012045.
2. Shaik Mohammad Tahir<sup>1</sup>, Mr. K. Siva Kiran<sup>2</sup> (2020): Seismic Performance Of Multi-Storey Reinforced Concrete Buildings By Pushover Analysis International Research Journal of Engineering and Technology (IRJET) e-ISSN: 2395-0056 Volume: 07 Issue: 09 | Sep 2020.
3. SherifGamal Abd-Elhamid<sup>1,\*</sup>, Reham Mohamed GalalEbrahim El-Tahawy<sup>2</sup>, Mohamed Nour El-Din Fayed<sup>3</sup> (2020): Dynamic Behavior of Multi-Story Concrete Buildings Based on Non-Linear Pushover & Time History Analyses Advances in Science, Technology and Engineering Systems Journal Vol. 5, No. 2, 143-153 (2020).
4. Uzair Khan<sup>1</sup> Hina Gupta<sup>2</sup> (2017): Non-Linear Seismic Analysis Of Multi-Storey Building International Journal Of Engineering Technology Science And Research IJETSr Www.Ijetsr.Com ISSN 2394 – 3386 Volume 4, Issue 5 May 2017.
5. S.P. Akshara (2015): Performance Based Seismic Evaluation Of Multi-Storeyed Reinforced Concrete Buildings Using Pushover Analysis International Research Journal of Engineering and Technology (IRJET) e-ISSN: 2395 -0056 Volume: 02 Issue: 03 | June-2015.
6. Abhijeet A. Maske<sup>1</sup>, Nikhil A. Maske <sup>2</sup>, Preeti P. Shiras<sup>3</sup> (2014): Pushover Analysis Of Reinforced Concrete Frame Structures: A Case Study International Journal Of Advanced Technology In Engineering And Science Volume No.02, Issue No. 10, October 2014 Issn (Online): 2348 – 7550.
7. RizaAinul Hakim\* Mohammed SohaibAlama Samir A. Ashour (2014): Application of Pushover Analysis for Evaluating Seismic Performance of RC Building International Journal of Engineering Research & Technology (IJERT) Vol. 3 Issue 1, January – 2014.
8. Ms. Nivedita N. Raut& Ms. Swati D. Ambadkar (2013): Pushover Analysis of Multistoried Building Global Journal of Researches in Engineering Civil And Structural Engineering Volume 13 Issue 4 Version 1.0 Year 2013 Type: Double Blind Peer Reviewed International Research Journal Publisher: Global Journals Inc. (USA) Online ISSN: 2249-4596 & Print ISSN: 0975-5861.
9. Kadid A., Boumrkik A. (2008): Pushover Analysis of Reinforced Concrete Frame Structures, Asian Journal of Civil Engineering (Building and Housing) Vol. 9, No.1(2008)Pages 75-83
10. Virote Boonyapinyo<sup>1</sup> , Norathape Choopool<sup>2</sup> And Pennung Warnitchai<sup>3</sup> (2008): Seismic Performance Evaluation Of Reinforced-Concrete Buildings By Static Pushover And Nonlinear Dynamic Analyses The 14 World Conference On Earthquake Engineering October 12-17, 2008, Beijing, China.
11. Sofyan. Y. Ahmed: Seismic Evaluation of Reinforced Concrete Frames Using Pushover Analysis.
12. Shashi Shankar Mohd. Tauseef Husain.: Performance Based Design and Optimization of Multi-storeyed Structure: A Simulative Performance Analysis Journal of Xi'an University of Architecture & Technology Volume XII, Issue V, 2020 ISSN No : 1006-7930.
13. IS456,Plain and Reinforced Concrete Code of Practice(fourth revision),NewDelhi-110002:Bureau of Indian Standards,2000
14. IS 875(part1), Dead loads, unit weights of building material and stored and stored material (second revision),New Delhi 110002: Bureau of Indian Standards, 1987.