

REAL TIME AGROBASE SOLUTION

Mr. Amar S. Yelane¹, Mr. Raj U. Patil², Mr. Pradeep S. Kotkar³, Miss. Pooja A. Bhagat⁴

¹⁻⁴UG Student, Department of Computer Engineering, JSPM Imperial College of Engineering & Research, Pune

⁵Under guidance: Prof. Santosh T. Waghmode

Abstract - For detecting and finding cure information for plant diseases, Agricultural scientists play a vital role. Manually identifying the crop disease is hard and time consuming for farmers. Hence by using Machine learning we can identify the disease affected by just scanning the leaf of the crop in little amount of time. Now a days farmers are facing lots of problems. Even some are unaware about how to take care of plants for better result. And when farmers go to buy fertilizers in shops, they are not given proper fertilizers. So, there should be something which will advise the solution for each and every problem of farmers from crop sowing & care taking. Farmers may be unaware of the diseases that may arise during various parts of the growing season. So, this project aims to provide farmers all the facilities and advice in a digital way. Using this system farmers will be able to recognize the crop diseases easily and will get the smart advice for taking care of crops. And also, we are providing farmers ways to manage their agricultural waste and make money. There will also be a market available for buying seeds. This is the all-in-one solution for agricultural development.

Key Words: plant disease detection, feature extraction, image processing

1. INTRODUCTION

Agriculture is the most vital aspect of our lives. Nearly 60-70% of our rural households depend on agriculture. It plays a key role in the development of the nation. In the 21st century, the Nation has made great progress in all sectors like medical, science, and agriculture. Many of the plants are used for the development of society. Plants help us in every part of our lives like food, fabric etc. While Agricultural practices like sowing, irrigation, manufacturing, weeding, harvesting and storage farmers face lots of problems due to climate change, soil erosion and biodiversity loss. Farmers sow a variety of crops but diseases affect the growth of crops. Even some farmers are unaware of the changes and diseases to crops due to climate change. In order to increase production of crops and benefit farmers, study of the crop diseases and the proper solution for them is important. Firstly, monitoring health and analysis of the plant diseases is a must. Farmers don't get the proper advice and fertilizers from the local shops. There is a need for a platform where farmers can get proper fertilizers with proper advice on how to take care of the farm during various seasons. One more major problem which occurs after crop production is to manage the agricultural waste. Agricultural waste is used by lots of companies as raw data for some products as well as used for food for pet animals. So, farmers should have a

system where they can easily buy their agricultural waste and the one who needs it will be available for them easily. Detecting and analysing crops diseases is a major task as it requires a large amount of data and time. The image detection technique using machine Learning is used for plant disease detection. This article introduces the application of an all-in-one solution for all the above problems occurring in agricultural practices.

LITERATURE SURVEY

We are observing 3 major locations including Akole(Ahmednagar), Ahmadpur (Latur) and Amravati. These are our hometowns and are about 400 to 500 KM away from each other so the area our project covers is about 20+ districts as our analysis. Main agri products location wise Nagar/Nashik: Onions, sugarcane Latur: Soyabean, Sugarcane Wardha: Cotton, Pigeon Pea, Soyabean. In order to know about the previous research work done in this direction, several studies dedicated to the topic were referred. There are several papers published which gives us a little idea about various approaches for crop disease detection. Stephen Gang Wu et al in 2007, has developed a leaf recognition algorithm which is used to extract features and highly efficient algorithms for recognition purposes. A Probabilistic Neural Network (PNN) was used for recognition of plant leaves. The accuracy of recognition observed was 90%. Detection of disease by extracting color features: Mohmmad Ei-Helly proposed a paper "Integrating Diagnostic Expert System with Image Processing via Loosely Coupled Technique" in which he developed an expert system using image processing. This expert system analyzes the diseases by observation using four main image processing phases from a leaf. These are enhancement, segmentation, feature extraction and classification. Using this system they tested different types of crop diseases like Leaf miner, Powdery etc.

PROPOSED SYSTEM

The Realtime Agrobases system secured through Authentication is the mechanism by which a person proves their identity to a system. It is the process of proving that a subject is the valid user of an account. Often, the authentication process involves a simple username and password. But other more complex authentication factors or credential-protection mechanisms are involved in order to provide strong protection for the logon and account-verification process. The authentication process requires that the subject provide an identity and then proof of that identity.

Realtime solution to crop diseases and the expert advice in section, the images of the plant leaf are captured through the mobile application by using camera the raw data passed for Feature extraction, the Feature extraction plays an important role for identification of an object.

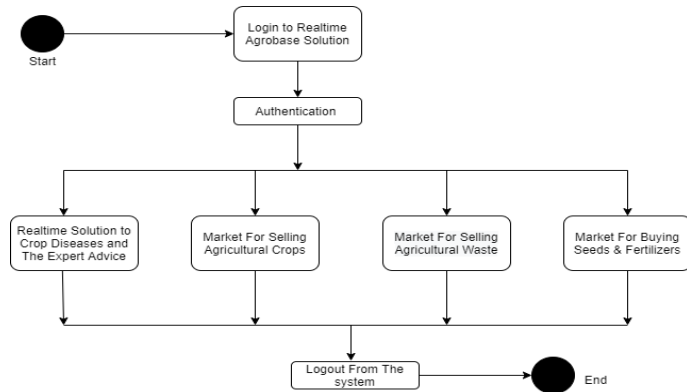


Fig.1 Structure of Proposed System

In many applications of image processing feature extraction is used. Color, texture, morphology, edges etc. are the features which can be used in plant disease detection. Data passed for training to train data by using TensorFlow. Machine learning is the subfield of computer science. It evolved from the study of pattern recognition and computational learning theory in artificial intelligence, machine learning explores the study and construction of algorithms that can learn from and make predictions on data. Automatic detection of plant diseases is an important task as it may prove beneficial in monitoring large fields of crops, and thus automatically detect diseases from symptoms that appear on plant leaves. Thus, system detection of plant disease with the help of supervised machine learning techniques provides more accurate and guidance for disease management. The main part of the plant to examine the disease is the leaf. The major categories of plant leaf diseases are based on viral, fungal and bacteria.

METHODOLOGY

dataset is used to prepare a model, to train it. We pretend the test dataset is new data where the output values are withheld from the algorithm. We gather predictions from the trained model on the inputs from the test dataset and compare them to the withheld output values of the test set. Image evolution: Model evaluation aims to estimate the generalization accuracy of a model on future data.

Application android: android application upload images on server and display the results. Step 10

Web application: The web application would be developed

using python the images fetch from android application and start the processing on data

ALGORITHM

- Step 1: Start
- Step 2: Login activity validates the user data.
- Step 3: Fetch the all database dynamically from admin panel
- Step 4: Select the any activity as per user requirement
- Step 5: Start the Crop disease detection module
- Step 6: System camera application used to click the images.
- Step 7: Raw data send to server application, and train the dataset Using TensorFlow API
- Step 8: Output data send from server the android application
- Step 9: By using output data its will show the solution which treatment we need to do on crop.
- Step 10: Click on the solution, the solution page recommends which pesticide product we need to use.
- Step 11: Selected product add in cart
- Step 12: Complete the payment, already payment gateway is defined
- Step 13: Order add in profile
- Step 14: Exit

IMPLEMENTATION

Agriculture is an important source of income for Indian people. Farmers can grow a variety of crops but diseases hamper the growth of crops. One of the major factors responsible for the crop destruction is plant disease. Different plants suffer from different diseases. The main part of the plant to examine the disease is the leaf.



Fig: Project Execution plan

The major categories of plant leaf diseases are based on viral, fungal and bacteria. The diseases on leaves can reduce both the quality and quantity of crops and their further growth. The easy method to detect the plant diseases is with the help of agricultural experts having knowledge of plant diseases. But this manual detection of plant diseases takes a lot of time and is laborious work. Hence, there is a need for a machine learning method to detect leaf diseases. Computers can play a major role in developing the automatic methods for the detection and classification of leaf diseases. There can be various pattern recognition and image processing techniques that can be used in leaf disease detection. The leaf disease detection and classification of leaf diseases is the key to prevent agricultural loss. Different plant leaves bear different diseases. There are different types of methods and classifiers to detect plant leaf diseases.

OUTCOME

- Farmers will get the information regarding various crop diseases, what measures to be taken for the diseases, what fertilizers and pesticides to be used and how to take care of crops.
- Farmers will be able to easily detect what disease the crop is affected and the solutions to be taken will also be available to farmers at single click.
- Farmers get Proper solutions for various types of crop diseases. So it helps to increase crop production.
- Farmers will be able to easily manage and make from the agricultural waste by this application.
- There will also be a market available for buying seeds and selling their crops.
- This is the all-in-one solution for agricultural development.

APPLICATIONS

- Get Crop Disease information
- Get Proper Fertilizer information.
- Solution For Crop disease.
- Market for Fertilizer Selling and Buying.

REFERENCES

- [1] Mohammad Ei –Helly, Ahmed Rafea, Salwa El – Gamal And Reda Abd Ei Whab , “Integrating Diagnostic Expert System with Image Processing Via Loosely Coupled Technique,” Central Laboratory for Agricultural Expert
- [2] Stephen Gang Wu¹, Forrest Sheng Bao², Eric You Xu³, Yu-Xuan Wang⁴, Yi-Fan Chang⁵ and Qiao-Liang Xiang System (CLAES), 2004
- [3] Plant Disease Detection Techniques: A Review 2019 International Conference on Automation, Computational and Technology Management (ICACTM)
- [4] A Survey Paper on Crop Disease Identification and Classification Using Pattern Recognition and Digital Image Processing Techniques - IOSR Journal of Computer Engineering (IOSR-JCE) e-ISSN: 2278-0661, p-ISSN: 2278-8727 PP 14-17
1Asst. Professor, Department of Computer Science and Engineering, Maratha Mandal Engineering College, India.
2Professor, Department of Computer Science and Engineering, Maratha Mandal Engineering College, India.