

# Sensory Analysis of Dehydrated Pineapple (ANANAS COMOSUS L.) as a Sweetener in Corn Drink

Romualdo Martínez Carmona<sup>1</sup>, Benito Armando Cervantes Hernández<sup>2</sup>, Oscar Martínez de los Santos<sup>3</sup>, Ma. de Lourdes Huerta Becerra<sup>4</sup>, José Víctor Galaviz Rodríguez<sup>5</sup>, Román Daniel Romero Mitre<sup>6</sup>

<sup>1,2,3,4,5,6</sup>Industrial Processes and Operations Engineering/ Industrial Processes Manufacturing Area/ Industrial Processes Automotive Area/ Industrial Processes Plastics Area.  
Technological University of Tlaxcala, El Carmen Xalpatlahuaya, Huamantla, Tlaxcala 90500, Mexico

\*\*\*

**Abstract** – Students of the Industrial Processes Manufacturing Area and members of the Academic staff of Process Engineering of the Technological University of Tlaxcala carried out a sensory analysis of three types of corn-based drinks, one of them sweetened with sugar and two with pineapple flour as a sweetener. To carry out the study, an ANOVA analysis was carried out with the records of the evaluations of the tasters on the drinks. To carry out this research, different concentrations of raw materials were considered in the production process, and as a result it was found that there is a significant difference in color between beverages prepared with sugar and those prepared with dehydrated pineapple flour, while, in appearance, smell and taste, the three types of drinks are similar and accepted, achieving a new sweetener alternative (dehydrated pineapple flour instead of sugar).

**Key Words:** Sensory analysis, dehydrated pineapple, drink, sweetener, ANOVA analysis, corn.

## 1. INTRODUCTION

The human being requires to be nourished correctly, of certain minimum amounts of calories, proteins, vitamins and other nutrients that, if not covered, can cause malnutrition [1]. In the case of children in Mexico and around the world, the preferred foods are sugary foods, so consuming this type of food in excess causes diseases such as diabetes and obesity, which leads to health problems, therefore, alternatives should be sought so that food intake is healthy. Therefore, the academic staff of Process Engineering and students incorporated into the research, both of them from the Technological University of Tlaxcala, are interested in proposing to society a new healthy corn-based drink, due to its low sugar content, using dehydrated pineapple as a sweetener in its formula. To carry out this project, a solar dehydrator from the Technological University of Tlaxcala was used to dehydrate the pineapple and thus obtain the sweetener that was used in the preparation of a corn and milk drink with dehydrated pineapple as a substitute for sugar.

The process of making the drink was carried out at the home of Victoria Esmeralda Figueroa Canseco, a student of the Industrial Processes Manufacturing Area major, in the city of

Huamantla, Tlaxcala, to eight kilometers from the Technological University of Tlaxcala. This production process was carried out in a hygienic manner, complying the safety and hygiene care of beverages, established by the Mexican standard NOM-218-SSA1-2011. We emphasize that the process was not carried out at the institution facilities because they were closed due to the second wave of the COVID-19 pandemic in Mexico. For this reason, it was utilized the living room of the same address, where the process of tasting tests was carried out with 20 random voluntary people, from 10 to 60 years old, of both sexes, all of them with good health, since at the time of the test, anybody was under any medical treatment.

The activities were carried out under the advice and supervision of the members of the Process Engineering academic staff of the Technological University of Tlaxcala.

## 1.1 Advantages of pineapple

Pineapple has a high content of vitamin C that acts as an antioxidant to protect cells against damage caused by free radicals, it also contains fructose with slow assimilation metabolism to gain the energy that the human body needs to later convert it into glucose, also pineapple has a high sweetening power, mostly in its ripening stage [2].

Consuming dehydrated pineapple in corn-based drinks and milk as a dietary supplement strengthens the diet in people due to its high content of carbohydrates, calcium and vitamin C. Table 1 shows the nutritional content of the pineapple as a percentage ingested of the recommended daily dose for an average healthy adult in 100 grams RDD [3].

**Table 1** Nutritional content of pineapple

### Nutritional information 100 gr of pineapple contains

| Component     | Amount      | Units | % RDD |
|---------------|-------------|-------|-------|
| Energy        | 50          | Kcal  | 2.29  |
| Protein       | < of 1 gram | G     | 0.8   |
| Fat           | 0           | --    | --    |
| Carbohydrates | 14          | G     | --    |
| Fiber         | --          | G     | --    |
| Vitamin A     | 5           | ug    | <2    |
| Vitamin C     | 61          | mg    | 102   |

|            |     |    |    |
|------------|-----|----|----|
| Calcium    | 18  | mg | 2  |
| Phosphorus | 8   | mg | <2 |
| Iron       | 0.5 | mg | 4  |

Source: (Arias, 2010)

### 1.2 Materials

For the process of making corn-based beverages, pewter cooking pots with a capacity of three liters, a simmering stove, wooden spoons, a knife, a small board to cut the pineapple, glass jugs, cups, a soup plate to store pineapple flour and sugar, a digital weight scale with a capacity of three kilos for weighing raw materials, a blender to grind pineapple and a family solar dehydrator that belongs to the Technological University of Tlaxcala were used. Before making the beverages, the raw materials such as corn starch flour, lactose-free milk, sugar, cinnamon, corn dough and dehydrated pineapple were arranged.

### 2. Components

To prepare the beverages, some mixtures were made with different concentrations of cornstarch, dough, lactose-free milk, cinnamon, sugar and dehydrated pineapple.

**Table 2:** Materials for corn-based beverages

| Raw material               | Sample 1 % | Sample 2 % | Sample 3 % |
|----------------------------|------------|------------|------------|
| Dough                      | 0.00       | 0.00       | 8.3        |
| Cornstarch                 | 8.88       | 8.3        | 0.00       |
| Cinnamon                   | 1          | 0.5        | 0.5        |
| Lactose-free milk          | 88.88      | 83         | 83         |
| Dehydrated pineapple flour | 0.00       | 8.2        | 8.2        |
| Sugar                      | 1.33       | 0.00       | 0.00       |
| Total                      | 100        | 100        | 100        |

Source: Process engineering academic staff, 2021 (PEAS)

For the elaboration of the corn-based drinks, of samples 1, 2, 3, the raw materials were prepared in a plastic tray, where they were mixed according to the specified quantities as shown in Table 2 with cornstarch flour, cinnamon, milk and sugar, dough, and pineapple flour.

The lactose-free milk and the cinnamon pieces are poured into the pewter pot, with the stove over low heat for 10 minutes or until it starts to boil, after that time the cornstarch and sugar are added for the sample 1, pineapple flour instead of sugar for sample 2 and dough and pineapple flour for sample 3, stirring with a wooden spoon to avoid sticking or lumps in the drink, after others 8 minutes of constant stirring, the stove fire is turned off and the drink is ready to serve. A sensory study was made with this drink, so

20 people tasted each one of the 3 samples, in order to evaluate color, appearance, smell and flavor.

### 2.2 Pineapple dehydration process

The pineapple flour was processed with the dehydrators of the Process Engineering Academic Staff (PEAS) from the Technological University of Tlaxcala. Where the solar energy is used through these conventional flat surface dehydration equipment [4]. The equipment consists of a dehydration tunnel protected by a glass cover, in order to isolate the food from dust and insects, with a metal grid where the product to be dehydrated is placed. The conditions in the dehydration tunnel on a sunny day are: air heating (50° C ± 5° C) by thermal solar energy and natural convection [5]. Figure 1 shows the cutting of the pineapple into slices, the placement of the pineapple on the tray and the pineapple in the dehydrator where the solar dehydration process begins.



**Figure 1:** Cutting and Process of solar dehydration of pineapple

Source: Own elaboration, 2021

In Figure 2 the dehydrated pineapple is shown, as well as the powdered flour to be used as a sweetener to make the drinks



of the second and third samples.

**Figure 2:** Dehydrated pineapple flour

Source: Own elaboration, 2021

### 2.3. Preparation of corn-based beverages

Figure 3 shows the elaboration of the corn-based drinks in sample 1 with cornstarch, cinnamon, sugar and milk. The milk and cinnamon are poured into a saucepan and boiled on a stove over low heat, and after 10 minutes, add the cornstarch and sugar, all it stirs with a wooden spoon for 8 minutes continuously to avoid lumps, after that time the stove is turned off and the drink is ready to be served.



Figure 3: Corn and sugar drink



Figure 4: Drink with pineapple flour as a sweetener in samples 2 and 3

Source: Own elaboration, 2021

Source: Own elaboration, 2021

In Figure 4, samples 1, 2 and 3 are presented, where the yellowish color is observed in the last two samples, due to the fact that dehydrated pineapple flour was added instead of sugar as a sweetener.

### 3. Methodology

After preparing the drinks, the sensory evaluation was carried out, these tests are decisive for the development of the food, because it is not enough that they are nutritious, microbiologically safe, with a long shelf life, easy to prepare and reduced cost, if its sensory properties are not suitable for the consumer's senses. [6]. The sensory analysis was carried out using the following methodology. Figure 5 shows the flow diagram of the sensory analysis process.

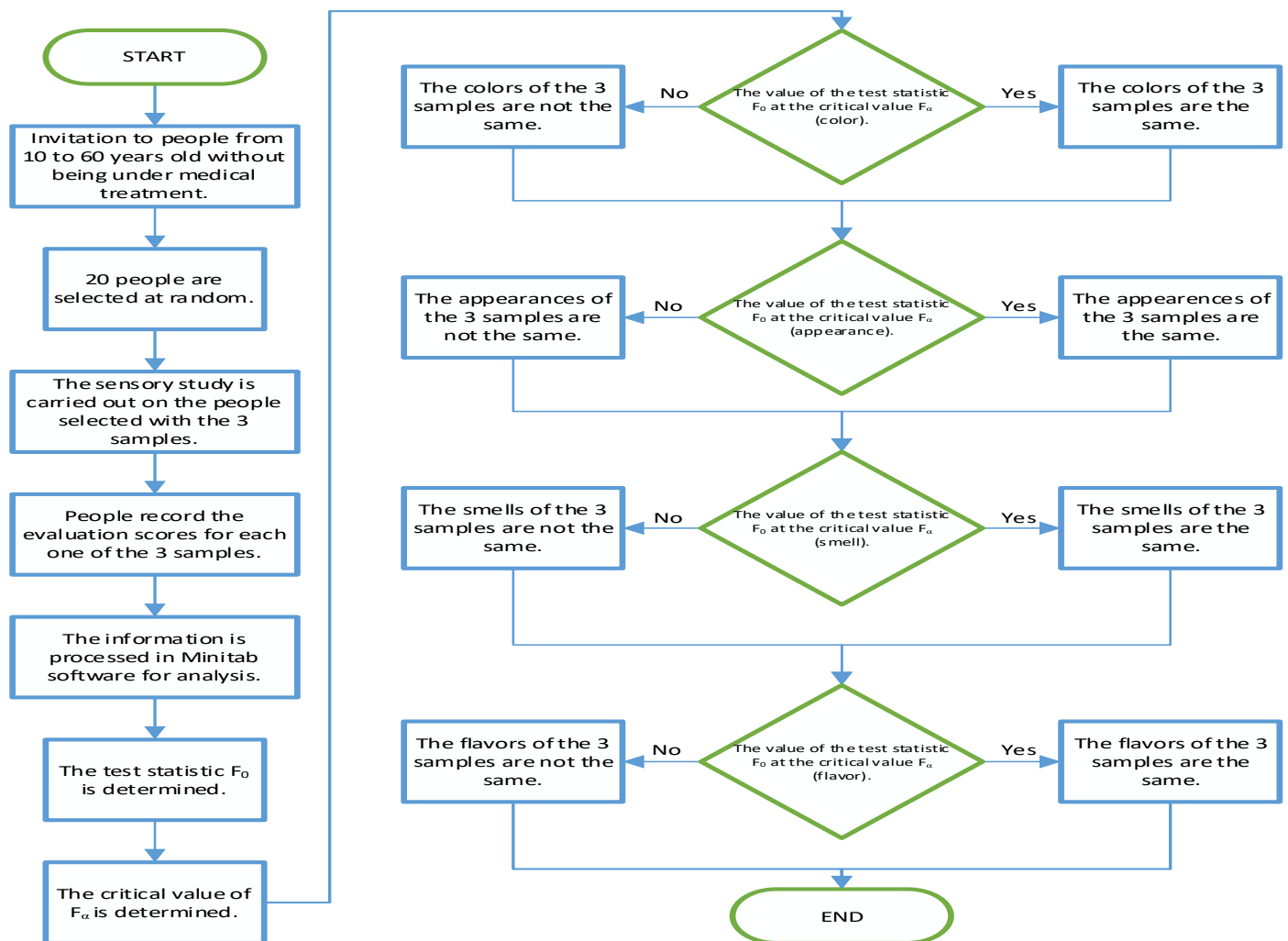


Figure 5: Sensory evaluation flow chart

Source: Own elaboration, 2021

### 3.1 Sensory evaluation using the hedonic scale or Likert scale

The sensory evaluation was carried out by the Hedonic scale method, that varies between 1 and 9, these values correspond to the minimum and maximum acceptance degrees respectively; the value 5 separates the acceptance and rejection zones.

Table 3 specifies the weightings in order to evaluate the sensory characteristics ranging from 1 to 9 for each evaluated characteristic.

**Table 3: Hedonic scale rating weighting**

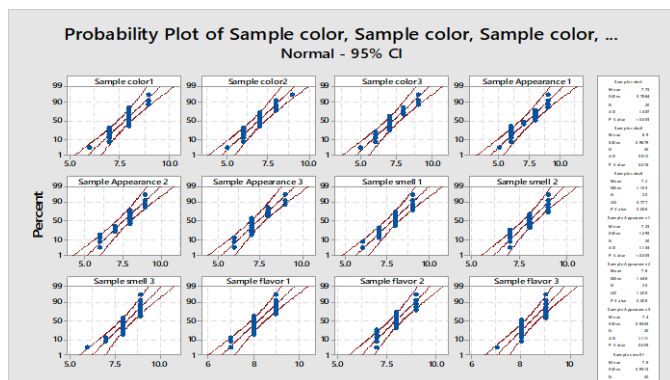
| Score                     |                   |
|---------------------------|-------------------|
| 5 Neither like or dislike | 9 Like extremely  |
| 4 Little dislike          | 8 Like very much  |
| 3 Moderately dislike      | 7 Like moderately |
| 2 Very dislike            | 6 like a little   |
| 1 Extremely dislike       |                   |

Source: Hedonic Scale, 2021 year

For the elaboration of the drinks, each one of the three samples were coded to identify them, assigning them the numbers 1, 2 and 3 respectively. For the sensory tests, the records of the tasters' weights for each type of drink were considered according to the types of components of each sample. The characteristics evaluated were: color, smell, appearance and taste.

### 3.2 ANOVA analysis of sensory characteristics

With the records obtained from the evaluations made to the tasters, the ANOVA analysis was determined by their sensory preferences regarding the color, appearance, smell and taste of the three types of beverages, as well as compliance with the normality and homoscedasticity of the record of the data. Figure 6 shows the behavior of the sensory tests of the three samples.



**Figure 6:** Normality of the three types of beverages samples

Source: Own elaboration, 2021

Due to this study pretends to demonstrate, if there is equality between the means and variances of three samples, the ANOVA analysis was chosen as statistic test to verify that the three samples are similar in their sensory characteristics.

### 3.3 Values of the test statistic Fo of the sensory characteristics

Tables 4, 5, 6, 7 show the results of the ANOVA analysis of each one of the sensory characteristics of color, appearance, smell and flavor respectively.

**Table 4: ANOVA analysis, color of the drinks**

| Source | DF | ADJ SS | ADJ MS | F <sub>0</sub> Value |
|--------|----|--------|--------|----------------------|
| Factor | 2  | 7.433  | 3.7167 | <b>4.02</b>          |
| Error  | 57 | 52.750 | 0.9254 |                      |
| Total  | 59 | 60.183 |        |                      |

Source: Own elaboration, 2021

**Table 5: ANOVA analysis, appearance of the drinks**

| Source | DF | ADJ SS | ADJ MS | F <sub>0</sub> Value |
|--------|----|--------|--------|----------------------|
| Factor | 2  | 1.233  | 0.6167 | <b>0.51</b>          |
| error  | 57 | 69.350 | 1.2167 |                      |
| Total  | 59 | 70.583 |        |                      |

Source: Own elaboration, 2021

**Table 6: ANOVA analysis, smell of the drinks**

| Source | DF | ADJ SS | ADJ MS | F <sub>0</sub> Value |
|--------|----|--------|--------|----------------------|
| Factor | 2  | 1.600  | 0.800  | <b>1.08</b>          |
| error  | 57 | 42.400 | 0.7439 |                      |
| Total  | 59 | 44.00  |        |                      |

Source: Own elaboration, 2021

**Table 7: ANOVA analysis, flavor of the drinks**

| Source | DF | ADJ SS | ADJ MS | F <sub>0</sub> Value |
|--------|----|--------|--------|----------------------|
| Factor | 2  | 2.033  | 1.0167 | <b>2.15</b>          |
| error  | 57 | 26.950 | 0.4728 |                      |



|       |    |        |  |  |
|-------|----|--------|--|--|
| Total | 59 | 28.983 |  |  |
|-------|----|--------|--|--|

Source: Own elaboration, 2021

## 4. RESULTS AND DISCUSSION

### 4.1 Sensory Analysis results

The results of the ANOVA analysis are shown in Tables 4, 5, 6 and 7 of the test statistic  $F_0$  of each one of the sensory characteristics analyzed, where they are compared with the critical value of  $F_\alpha = 3.159$ , obtained from F-Fisher Table with a significance level of 0.05, with 2 degrees of freedom in the numerator and 57 degrees of freedom in the denominator, (0.05,2,57), and because the color test statistic is  $F_0 = 4.02 >$  of  $F_\alpha = 3.159$ , we conclude that there is significance in the samples, that is, there is a difference in the color of the beverages, in at least one of the samples; in this case it is from sample 1 that does not contain dehydrated pineapple flour. Figure 7 shows the critical value that is the division point to accept or reject the value of the test statistic, in this case, as  $F_0 = 4.02 >$  of  $F_\alpha = 3.159$

It is concluded that the colors of the three drinks are statistically different, and this is due to the process that was used of solar dehydration by natural convection gradually drying the pineapple, causing a yellowish color. Therefore, during the color comparison of the beverages without sugar and with dehydrated pineapple flour, samples 2 and 3 were darker as shown in Figure 4, but with a pleasant taste in the 3 types of beverages; if the process had been forced dehydration, a lighter color would be preserved [7].

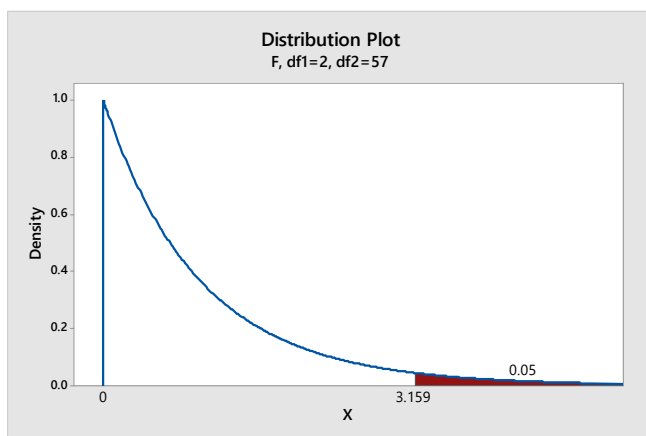


Figure 7: Critical value  $F_\alpha$  to compare the test statistic  $F_0$

Source: Own elaboration, 2021

Regarding the values of the test statistic on appearance  $F_0 = 0.51$ , smell  $F_0 = 1.08$  and taste  $F_0 = 2.15$  are less than the critical value  $F_\alpha = 3.159$ , which is the division point between the region in which the null hypothesis is rejected. and the region in which it is not rejected [8], that is, in this study, it is the area where the values of the test statistic are within the acceptance area, statistically demonstrating that the three

beverages are accepted for their sensory characteristics of appearance, smell and taste; therefore, there is no significant difference, which makes it possible to affirm that the drink with sugar as well as the two drinks prepared with dehydrated pineapple flour are pleasant and accepted in the same way.

## 5. FUTURE WORK

In this study, it was found that beverages based on corn with sugar are pleasant, as well as with beverages accompanied by pineapple flour as a sweetener. For future work, it is necessary to experiment on strawberries, oranges, peaches, pears, guavas among other fruits, as well as perform chemical tests to know the nutritional content of each drink prepared, after verifying with this sensory study that the drinks with dehydrated pineapple flour are accepted.

## 6. CONCLUSION

Regarding the sensory tests of the corn-based drinks, it was found that the three types of drinks are accepted, both in appearance, smell and taste, as for the color in sample 1 it is significantly different from the two samples that contain dehydrated pineapple flour as a sweetener, but the color does not detract from the preference of the drinks.

## ACKNOWLEDGEMENT

The Process Engineering Academic Staff thanks Master Marco Antonio Castillo Hernández, rector of the Technological University of Tlaxcala, for providing the permission to use the dehydrators of the Institution.

The members of the Process Engineering Academic staff recognize the students Juan de Dios López López and Victoria Esmeralda Figueroa Canseco from the Manufacturing Area Industrial Processes Career for their participation in this research work.

## REFERENCES

- [1] J. Escudero and J. Murante, «Projections of nutritional needs and food in Mexico.,», nutrition division, p. 66, 1984.
- [2] A. Ramírez and E. Pacheco de Delahaye, «Chemical composition and bioactive compounds present in pineapple, guava and soursop pulps.,» Interciencia, pp. 71-75, 2011.
- [3] L. Arias Montoya, L. M. Portilla de Arias and J. C. Castaño Benjumea, «Associativity model for dehydrated pineapple production.,» Scientia Et Technica, pp. 73-78, 2010.
- [4] B. A. Cervantes Hernández, R. Martínez Carmona and J. V. Galaviz Rodríguez, « Dehydration of diamond peach (Prunus persica L. Batsch) with a flat surface solar dehydrator.,» Journal of environmental sciences and

natural resources., pp. 16-26, 2017.

- [5] J. V. Galaviz Rodriguez, R. Martínez Carmona, B. A. Cervantez Hernandez, E. Mendoza Vázquez, A. Padilla Vivanco and D. Villegas Hernández, Sustainable Technological Strategy to Dehydrate Fruits, Vegetables and Legumes, Madrid: Palibrio, 2012.
- [6] N. W. Desrosier, Food Preservation, Mexico D.F.: Patria, 2007.
- [7] M. Carrillo Carrillo, J. Castorena Alemán, F. García Jiménez, R. Conejo Flores, J. Carranza Concha and J. García González, « Dehydration of pineapple (Ananas comosus) by means of solar radiation in a direct dryer,» Research and Development in Food Science and Technology, p. 4, 2020.
- [8] D. A. Lind, W. G. Marchal and R. D. Manson, Statistics for Administration and Economy, México: Alfaomega, 2004.

**BIOGRAPHIES**

**Romualdo Martínez Carmona**

Industrial Engineer in Production, graduated from the Technological Institute of Apizaco, Master in Quality Sciences graduated from the Autonomous University of Tlaxcala, Master in Administrative Engineering graduated from the Technological Institute of Apizaco. Certified in "Lean Six Sigma Green Belt" by Green Belt Cuellar Associates. Work experience in the Production area in Chemical companies: "Rohm and Haas México S.A. de C.V." for 15 years and "Plastics Specials Garen S.A. de C.V" for 3 years. I currently work at the Technological University of Tlaxcala as a Research Professor.



**Benito Armando Cervantes Hernández.**

Industrial Chemist and Master in Educational Development. He is a full-time Associate Research Professor "C" at the Technological University of Tlaxcala, giving a chair in the area of basic science and technology. Member of the major Engineering in Processes and Industrial Operations. With a desirable profile PRODEP since 2012. He is a member of the academic staff: Engineering in Processes, UTTLAX- CA-2., with the level of Consolidation.



**Oscar Martínez de los Santos**

Law degree from the Autonomous University of Tlaxcala, Senior Management Master degree from the University of the Valley of Tlaxcala, Associate full-time "C" research professor of Industrial Processes and Operations Engineering; Legal consultant of the business incubator of the Technological University of Tlaxcala. Advisor in entrepreneurship projects.



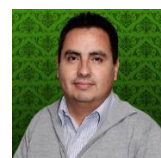
**Ma. de Lourdes Huerta Becerra**

Professor in Teaching English, graduated from Facultad de Lenguas de la Benemérita Universidad Autónoma de Puebla, Full-time Research Professor at Universidad Tecnológica de Tlaxcala, in the Engineering in Processes and Industrial Operations and with a desirable profile PRODEP from 2012. Member of the academic staff: Engineering in Processes, UTTLAX-CA-2., with the level of Consolidation.



**José Víctor Galaviz Rodríguez**

Full-time Research Professor. Holder "B" Technological University of Tlaxcala. Head of the Academic Staff Process Engineering UTTLAX-CA-2. Member of the major Engineering in processes and Industrial Operations. Member of the National System of Scientific and Technological Evaluation RCEA-07-26884-2013. Area 7 Engineering and Industry. CONACYT. PhD in Strategic Planning and Technology Management, with Honorable Mention for Research at the Popular Autonomous University of the State of Puebla (UPAEP).



**Román Daniel Romero Mitre**

Ph. D. Román Daniel Romero Mitre. Research Professor at Universidad Tecnológica de Tlaxcala, he owns a title of industrial design of a cell phone support on behalf of IMPI in Mexico, also has valid his desirable profile before PRODEP until 2023. He is coordinator of the dual model in the Industrial Processes and Operations Engineering major and member of the Academic Postgraduate Committee.

