

SEISMIC ANALYSIS OF NORMAL RCC MULTISTORIED BUILDING WITH DAMPER AND ISOLATORS USING SAP SOFTWARE

Pramod Badole¹, Sumit Singh Shekhawat²

¹Pramod Badole, Department of Civil Engineering, SD Bansal Collage, Indore, Madhya Pradesh, INDIA

²Sumit Singh Shekhawat, Department of Civil Engineering, SD Bansal Collage, Indore, Madhya Pradesh, INDIA

³Pramod Badole, Department of Civil Engineering, SD Bansal Collage, Indore, Madhya Pradesh, INDIA

Abstract In day to day life, it is necessary to study the behavior of each multistory building structure undergoing ground movement, which is the common construction problem. The earthquake at the base of the structure creates the vibrating forces. To avoid such critical damage, structure engineering are working on various type of structural system that can help in without resistance, provide strength and withstand strong motion. Damper is one of the earth quack effective system. Damper are the energy- dissipating device used to resist the structure lateral forces. Damper are used to column buckling, beam deflection and improve the structures rigidity. During the earth quack, damper is used to reduce the vibration and deflection of the framed RC structure.

Key Words: Damper system, Stresses, Isolator system, Eigen Value, Circular frequency, Dynamic mass, Displacement.

1. INTRODUCTION

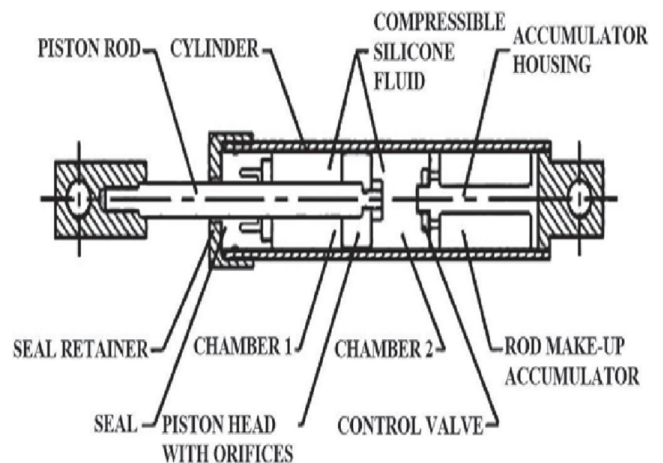
1.1 GENERAL

Earthquake is a natural shaking ground process due to tectonic plate motion. Earthquake loads should be carefully design to determine the structure's actual behavior with the clear understanding that damage is possible but should be controlled.

There are a no of passive energy dissipating devices in use, such as metallic dampers, friction dampers, viscous fluid damper and visco-elastic dampers.

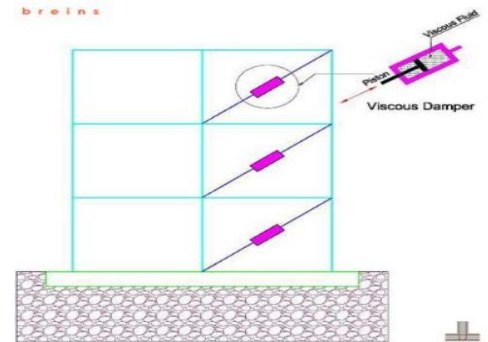
There are several possible equipment and mechanical system that can greatly enhance there efficiency by using the right configuration of these dampers.

As well as energy dissipation devices for structural control, these dampers are found to be efficient as base isolation. In this study, it is planned to evaluate seismic behavior of RC regular building with viscous fluid dampers, visco-elastic dampers and without any damping device using time history analysis.



Block diagram of Viscous Fluid Dampe

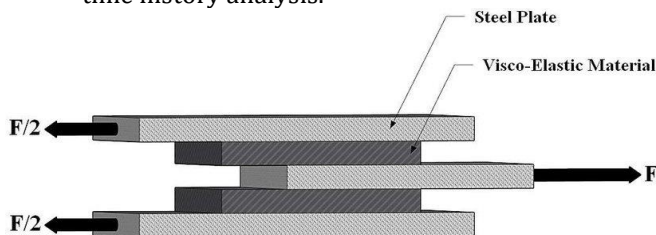
breins



Application of Viscous Damper on Building

1.2 Passive Control Devices

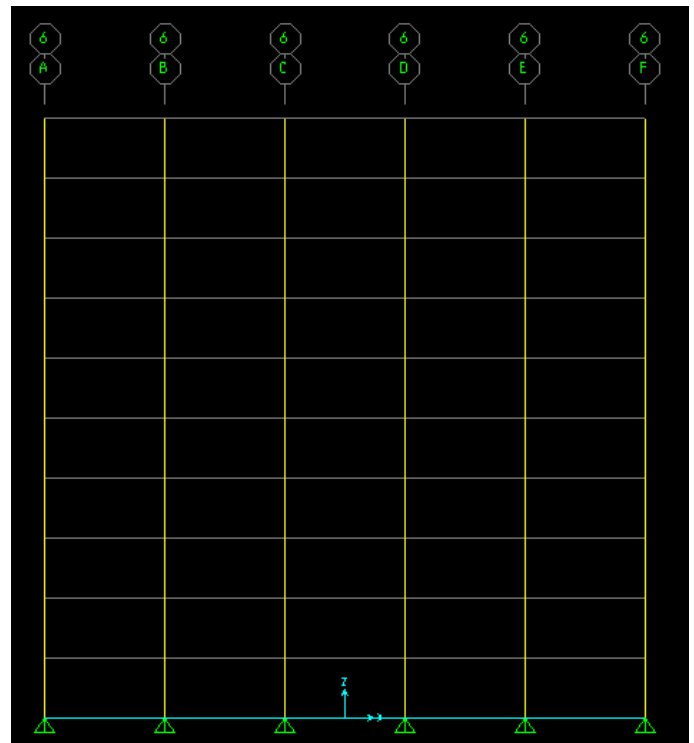
Passive control system is devices that provide force that is generated by absorbing some of the input energy in response to the motion of the structure, reducing the demand for energy dissipation on the structure. Therefore, to add energy to the system, no external power source is required. The motion of the structure is regulated in passive control devices by adding stiffness and damping devices to the structure. Passive control



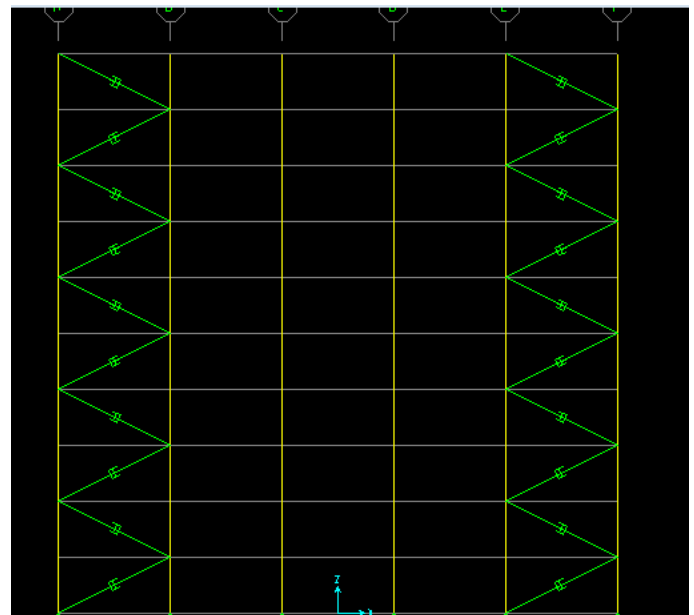
devices can be effective against the motion caused by earthquake and wind. Base isolation, Tuned Mass damper (TMD), Tuned Liquid damper (TLD), Metal yield damper and Viscous fluid damper are some example of passive control devices. It operates without any external source of energy being used. The cost of setting up these systems is therefore lower compared to active systems.

Up to a certain limit, these system can control the displacement, the safety system are designed according to the level of protection needed for an earthquake of a certain magnitude in a passive control system. The system consists of dampers, isolators and other devices that can be found and applied easily.

10 storey RCC structure and with damper and with isolators systems



Elevation of 10 storey RCC structure



Elevation of 10 storey normal RCC structure with dampers

1.3 Dampers

Dampers are the devices used to absorb or dissipate the structure's vibration from the earthquake and to increase the structure's damping and stiffness. Dampers system are designed and manufactured to protect structure integrity, control structural damage and prevent resident injury through the absorption of seismic energy and reduction of structural deformation.

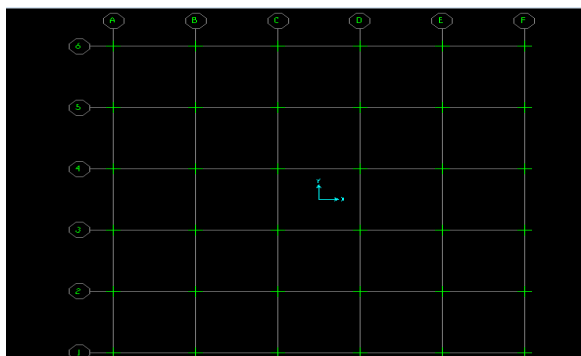
1 Methodology and Modeling

Objective of study:

- In this project three models of the ten storied of normal RCC building is made and one is of RCC structure with damper system and another one RCC structure with isolator system is made and the analyses of the stresses and the displacement and the moments and shear forces of the structure is found in the static as well as dynamic analysis is done using SAAP software to make an earthquake resisting structure .

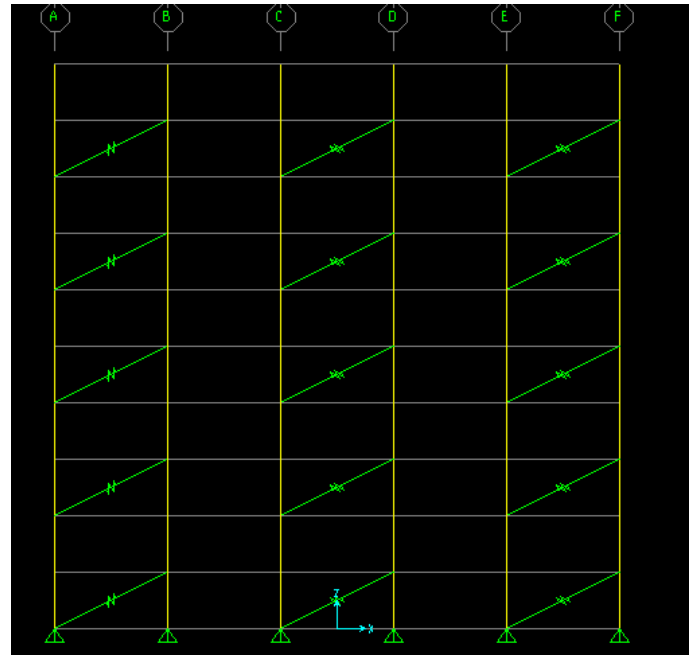
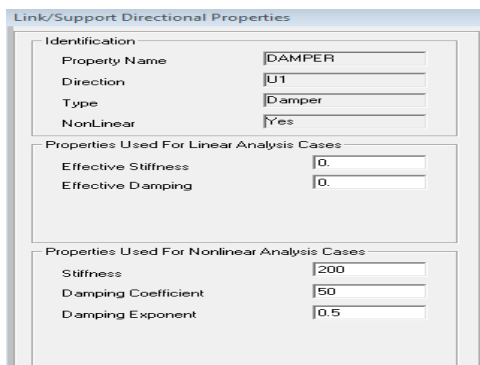
2 Modeling Parameters

Using IS 1893:2000(part 1) for the following data was used the modeling procedure of the supplied dampers system and isolators in walls and fixed building analysis in SAAP software and design steps of dampers and fixed base analysis

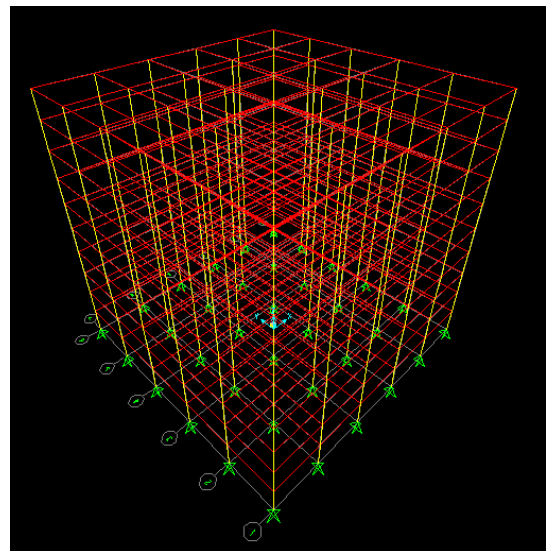


- **Number of storey:** G+10
 - Typical story height-3m
 - Bottom story height-3m
 - Parapet height -1.2m

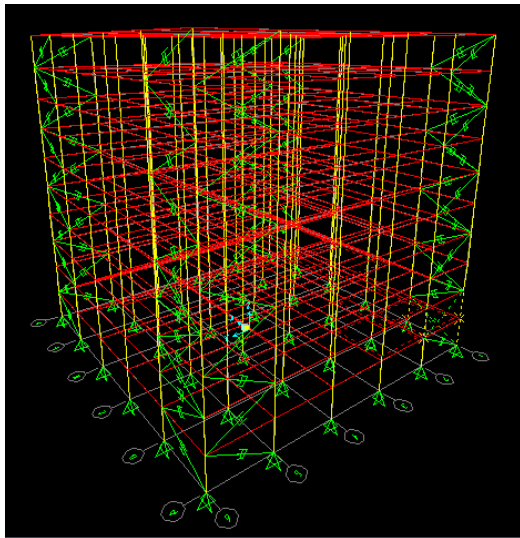
- **Elements consider:**
 - column size:450x500mm
 - beam size:250x450 mm
 - slab: Two way slab with grade of concrete M30 and thickness 150mm.
 - concrete grade:M30 for columns and beams.
 - Steel grade: for bending-500 N/mm², for shear-415 N/mm²
- **Load Consideration:**
- **Dead load:** In dead load the self-weight of the structure is considered.
- **Live load:** The live load taken in design is shown below :
 - Live load-5.0 KN/m²
 - Floor finish -1.5 KN/m²
 - Wall load= 3.7KN/m
- **Earthquake static values:** Static earthquake values for zone 3 is shown below for multistoried building:
 - Seismic zone factor- III
 - Consider, Z=0.16
 - Soil type-II (Medium soil)
 - Importance factor-1.0
 - Response Reduction -5.0
 - Total height of structure -33m.
 - Wind coefficient; Vb = 44m/s
 - Damper properties



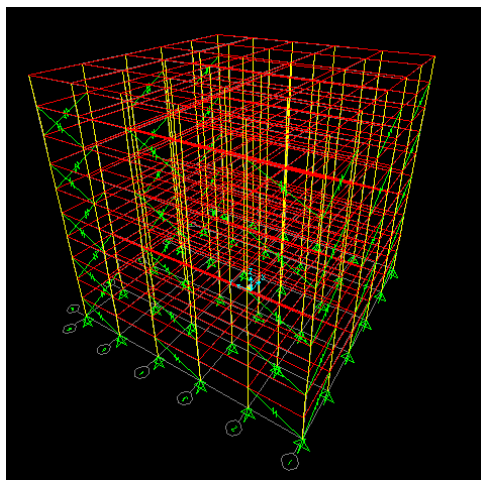
Elevation of 10 storey normal RCC structure with isolators



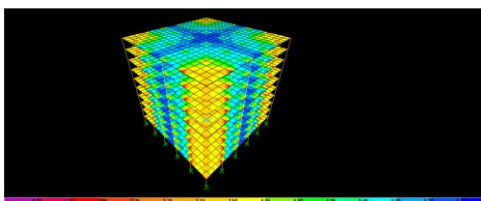
3 D View of 10 storey normal RCC structure



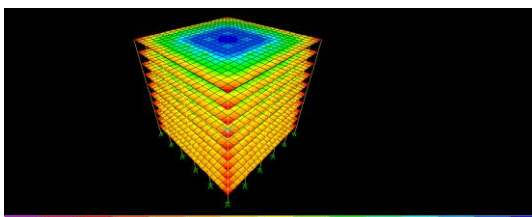
3 D View of 10 storey normal RCC structure with dampers



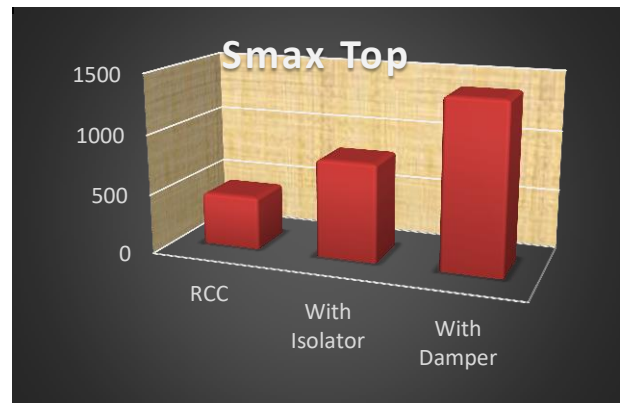
3DView of 10 storey normal RCC structure with isolators



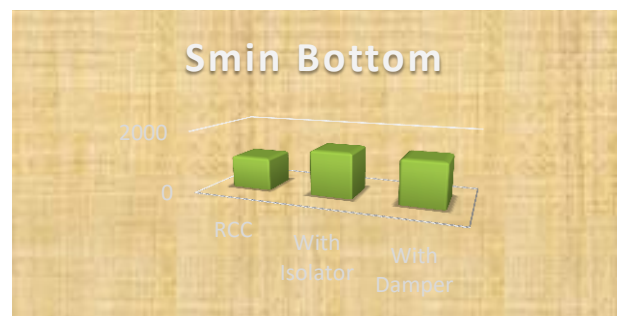
Max moment(M max) at 10 storey RCC structure



Min moment (M min) at 10 storey RCC structure



Smax top variation of multi storey RCC building with isolator and with damper system



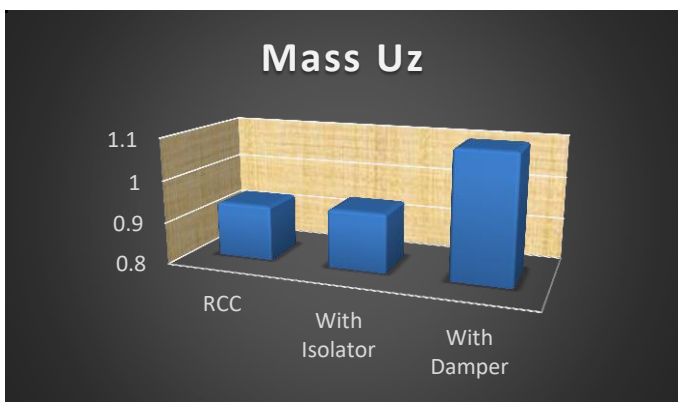
Smin bottom variation of multi storey RCC building with isolator and with damper system

2. RESULT AND DISCUSSION

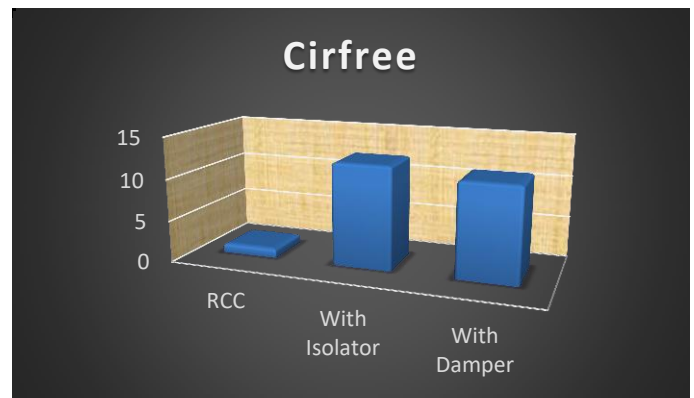
The different models of multi storied building with same plan area and height with RCC structure with damper system and one model with isolator system is analysed using SAAP software and the results are shown above in graphs and from following graphs the variation shown below.

- 1) Smax top variation of multi storey RCC building with isolator is 45% and with damper system is 65%
- 2) Smin top variation of multi storey RCC building with isolator is 65% and with damper system is 15%
- 3) S angle top variation of multi storey RCC building with isolator is 0.05% and with damper system 0.2%
- 4) Svm top variation of multi storey RCC building with isolator is 28.48% and with damper system is 25.2%
- 5) Smax bottom variation of multi storey RCC building with isolator is 38.5% and with damper system 30. %
- 6) Smin bottom variation of multi storey RCC building with isolator is 27.3 % and with damper system 20.3 %

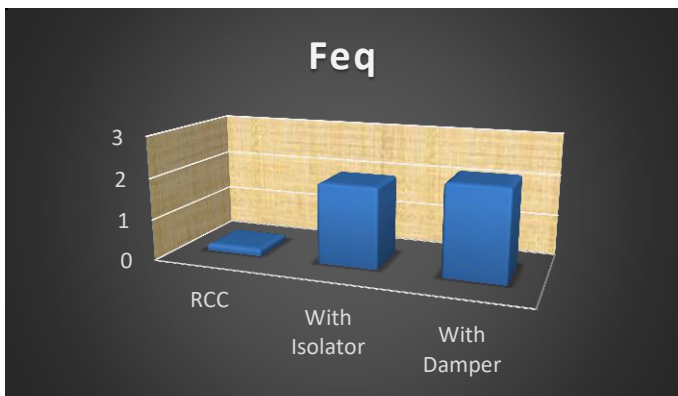
- 7) Sngle bottom variation of multi storey RCC building with isolator is 0.05% and with damper system is 0.75%
- 8) Svm bottom variation of multi storey RCC building with isolator is 28.48% and with damper system 35.2%
- 9) Static Ux variation of multi storey RCC building with isolator is 0.03 % and with damper system is 0.02 %
- 10) Static Uy variation of multi storey RCC building with isolator is 0.01 %and with damper system is 0.01 %
- 11) Static Uz variation of multi storey RCC building with isolator is 0.01 % and with damper system is 0.001 %
- 12) Dynamic Ux variation of multi storey RCC building with isolator is 0.77 and with damper system 0.002%
- 13) Dynamic Uy variation of multi storey RCC building with isolator is is 0.01 % and with damper system is 3 %
- 14) Dynamic Uz variation of multi storey RCC building with isolator is 0.23 and with damper system is 0.31%
- 15) Dynamic mass Ux variation of multi storey RCC building with isolator is 0.01 % and with damper system is 0.02 %
- 16) Dynamic mass Uy variation of multi storey RCC building with isolator is 0.01 %and with damper system is 0.38%
- 17) Dynamic mass Uz variation of multi storey RCC building with isolator is 0.01 % and with damper system 2.5%
- 18) frequency variation of multi storey RCC building with isolator is 90.8 and with damper system is 94.8%
- 19) Circular frequency variation of multi storey RCC building with isolator is 91 and with damper system is 92 %
- 20) Eigen Value variation of multi storey RCC building with isolator is 99 and with damper system 95%



Dynamic mass Uz variation of multi storey RCC building with isolator and with damper system



Circular frequency variation of multi storey RCC building with isolator and with damper system



Frequency variation of multi storey RCC building with isolator and with damper system

3. CONCLUSIONS

The three models of multistoried building with same plan area and height with normal RCC structure with damper system and one model with isolator system is analysed using sap software and the comparative study is made between three models and the following conclusions are drawn from models shown below:

Dynamic Ux, Uy, is more in RCC and Uz is more in isolator system than building with damper system and normal RCC building

Frequency is more in damper system than building with isolator system and normal RCC building

Circular frequency is more in isolator system than building with damper system and normal RCC building

Eigen value is more in isolator system than building with damper system and normal RCC building

The min stresses S_{min} at top and bottom are more in multistoried building with damper system than isolator system and RCC multistoried building

The Sangle i.e angular stresses at top and bottom are more in multistoried building with damper system than isolator system and RCC multistoried building

The Svm stresses at top and bottom are more in multistoried building with isolators system than damper system and RCC multistoried building

Static U_x, U_y , is more in damper system U_z is more in RCC than isolator system and building with damper system

4. REFERENCES

- Alireza Heysami, "Types of Dampers and their Seismic Performance during an Earthquake" Current World Environment Vol. 10(Special Issue 1), 1002-1015, 2015
- Raheel Kazi, P. V. Muley, P. Barbude, "Comparative Analysis of a Multistorey Building with and without Damper" International Journal of Computer Applications, ISSN 0975 – 8887, 2014.
- Durgesh C. Rai, "Future trends in earthquake-resistant design of structures" current science, VOL. 79, NO. 9, 2000.
- Vajreshwari Umachagi, "Application of Dampers for vibration control of structures: An overview" International Journal of Research in Engineering and Technology, IC-RICE Conference Issue Nov-2013.
- Gang Li, and Hong-Nan Li, "Experimental study and application in steel structure of 'dual functions' metallic damper" Advanced Steel Construction Vol. 9, No. 3, pp. 247-258, 2013.
- H.K.Miyamoto, A.S. Gilani¹ and A. Wada, "State of the art design of steel moment frame buildings with dampers" World Conference on Earthquake Engineering, October 12-17, 2008.
- Babak esmailzadeh hakimi, Alireza rahnavard, Teymour honarbakhsh, "seismic design of structures using friction damper bracings" World Conference on Earthquake Engineering, Paper No. 3446, August 1-6, 2004.
- Ri Hui Zhange and T T Soong, "Seismic response of steel frame structure with added visco elastic damper" Earthquake Engineering and Structural Dynamic, Vol.18, pp. 389-396, 1989.
- Takahiro Atsumi, Daiki Sato, Haruyuki Kitamura, Takafumi Fujita, Mitsuru Miyazaki, Kazuhiko Sasaki, Masato Ishii and Keisuke Yoshie, "Shaking Table Tests for a 10-story Frame using Combinations of Hysteretic and Viscous Dampers" World Conference on Earthquake Engineering, October 12-17, 2008.
- W.S. Pong, C.S. Tsai and G.C. Lee, "Seismic Performance of High-Rise Building Frames with Added Energy-Absorbing Devices" National center for earthquake engineering research, ISSN 1088-3800, June 20, 1994.
- S Chakraborty and B. K. Roy, "Reliability based optimum design of Tuned Mass Damper in seismic vibration control of structures with bounded uncertain parameters", Probabilistic Engineering Mechanics, Vol. 26, 2011, pp. 215-221.
- Julius Marko, David Thambiratnam & NimalPerera, "Mitigating Seismic Response of Shear Wall Structures Using Embedded Dampers", Institution of Structural Engineers 2006
- P.P. Chandurkar & Dr.P.S.Pajgade, " Seismic Analysis of RCC Building with and without Shear wall" International Journal of Modern Engineering Research (IJMER), Vol.3, Issue 3, June-2013.
- X.L.Lu, K.Ding & D.G Weng, " Comparative Study on Seismic Behaviour of RC Frame Structure Using Viscous Dampers, Steel Dampers and Viscoelastic Dampers", 15 World Conference on Earthquake Engineering, Lisboa 2012
- Waseem Khan, Dr.Saleem Akhtar & Aslam Hussain, "Non-linear time history analysis of tall structures for seismic load using damper" International Journal of Scientific and Research Publication, Volume 4, Issue 4, April-2014
- IS. 456. Indian Standards (plain and reinforced concrete code of practice), (Fourth Revision), 2000.
- IS: Indian Standards Criteria For Earthquake Design of Structures, 1893-2002.