

Analysis of Fake Ranking on Social Media: Twitter

Ashwin Shinde

¹Assistant Professor, Dept. of CSE, DBACER Nagpur, Maharashtra, India

Abstract - The main aim of this project is to study of fake ranking on social media. We use it for find credibility on any social media platform. Now-a-days, we can see that everyone shared information but every information is not real. Some fake information are also spread increasingly on social media. The spreading of this fake information should be stop by using our system. We semi-supervised rank on any social media post and find the score according their credibility. We have done survey on mechanism like analysing the online data, data abstraction, data classification. Such techniques help to ensuring the integrity of the information. By using our system no fake information spread on social media.

Key Words: Trustworthiness, Status, analysis, Userexperience, Feature-ranking, Twitter.

1. INTRODUCTION

Online social media are interactive computer mediated technology that facilitated the creation and sharing of information, ideas, interaction and other forms of expressions via virtual communities and networks. The variety of standalone and built in social media services currently available introduces challenges of definition. Network form through social media change the way groups of people interact and communicate.

Twitter is a social network that allows users to send and receive short messages. While some social networking services use different templates. Twitter is fairly simple to use. Twitter users can follow what other people post. People all over the world talk about all kind of topics. As a social media made increasingly possible to transfer near-real-time information in very cost effective way. Number of user around the globe experiencing of such platform so that it make possible for user to obtain news and information regarding their topic and interest. [1]

This leads to the development of technique that can verify information obtained from platform which has become a challenging and necessary task. We are including various modules information gathering, design of GUI, characterizing and exercising the suggested menus, implementation of proposed system, score generation, classification.

We are using two algorithms in Our projects LDRI (Language Detection Review Analysis) and Word Segmentation. We are going to create dataset for likes and comment for analysis. We are going to distinguish between credible and non-credible contents about post. It provide supervision on social

media content and it will trace Malicious users also. Basically it will help to stop rumors on social media. To access information credibility on social media platform for preventing fake or malicious information. To observe user comment in credible and noncredible.[2,3]

2. Objective

- To assessing information credibility on twitter to prevent fake or malicious information.
- To observe a tweet in credible or Noncredible way.

3. Proposed Work

- We propose a new credibility analysis system for assessing information credibility on twitter to prevent fake or malicious information.
- The models analyse and assess the credibility of the tweets on twitter. We observed a tweet in credible or Noncredible way as shown in figure Fig1:

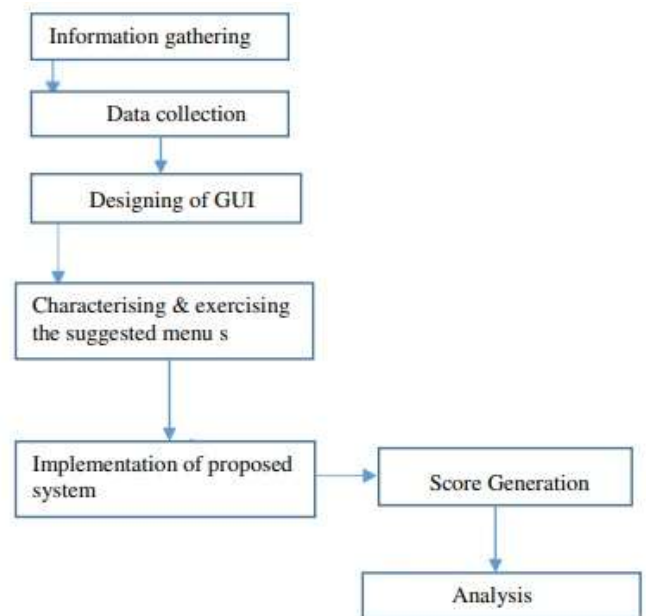


Fig -1: Modules

3. Workflow

The system consists of components the like user experiences (comments) Which is analysed by language detection algorithm.

To assist LDRI ratings or consider to generate credibility score.

To find credibility score average of rating particular and review score is to be calculated.

After successful execution we can verify the information obtained from social interactive platform.

Also we can classify the nature of uses involved in interaction on the basis of credibility score.

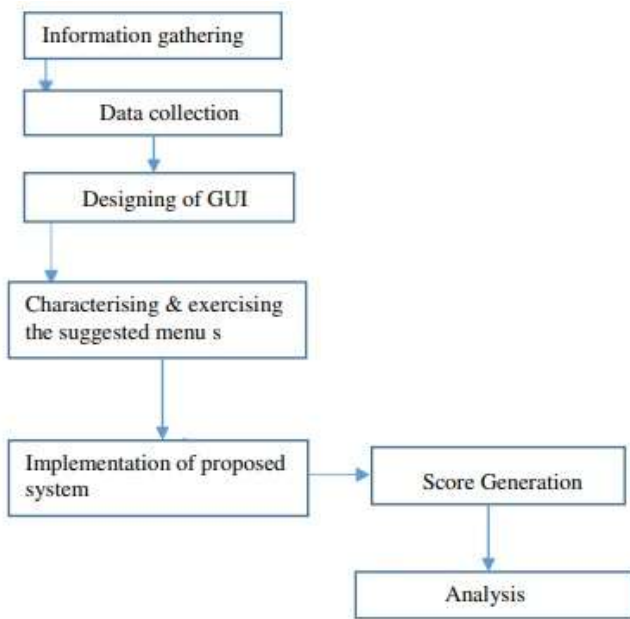


Fig -1: Workflow

4. Hardware and Software Requirements

Software Requirements:
 VB. Studio –Microsoft Visual Studio(C#).
 Asp.Net Server.

Hardware Requirements
 RAM (4GB)Or more

5. Snapshots

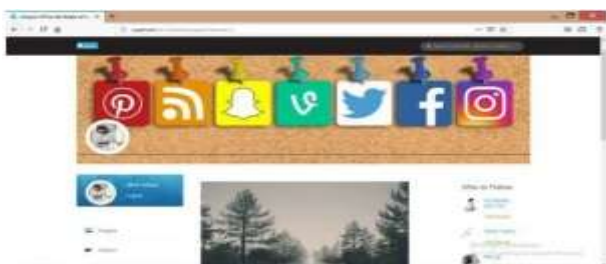


Fig -2: User Profile



Fig -3: User Post with Likes and Comments



Fig -4: Image and Vedio Post



Fig -5: Valid or Invalid Post Result



Fig -6: Valid or Invalid Post Result

5. CONCLUSION

After successful execution and implementation we design and analysis system any events or other information on social networks.

REFERENCES

- [1] Majed Alrubaian, Student Member, Muhammad AlQurishi, Student Member, Mohammad Mehedi Hassan, Member and AtifAlamri, Member, IEEE.
- [2] Real-time credibility assessment of content on twitter
Aditi Gupta, Ponnurangamkumaranguru, Caros Castillo, Patrick Meier International Conference on social Informatics, 228-243, 2014.
- [3] Rahul Bora BMSCE, Rahul Kumar, Utkarsh Dev, Satyam Shankar Prasad, ijarcsms.com, Bengaluru, India.R. Nicole, "Title of paper with only first word capitalized," J. Name Stand. Abbrev., in press.