

A REVIEW PAPER ON THE PRODUCTION LINE OF AN ALUMINUM ALLOY WHEEL MANUFACTURING INDUSTRY AND TO IMPROVE THE QUALITY OF PRODUCTION USING QUALITY CONTROL TOOLS

Abhinav Bhatnagar¹, Neha Kashyap², Niharika Mishra³, Amit Kumar⁴

^{1,2,3,4}Assistant Professor, Department of Mechanical Engineering, Roorkee College of Engineering, Roorkee, Uttarakhand, India

Abstract - As we know that there are many researches is going on to the growth of manufacturing industry and how we can improve it and in today's world the growth of automobile industry or growth aluminum alloy wheel manufacturing industry is very high. If we talk about the use of aluminum alloy then the aluminum is very strong material for various applications, so we can use the aluminum alloy in the automobile industry/aluminum alloy wheel industry. The objective of this project is to study of the production line of an aluminum alloy wheel manufacturing industry and to improve the quality of production using quality control tools. The defects during the manufacturing process occurs which are responsible for reducing the quality of product are analyzed with the help of using technique like check sheet, pareto diagram, cause-effect diagrams or figures, design of experiments and root cause. The all data and information is collected for various inspection methods. Using check sheet facts has been collected and all of the defects are studied. The results find by this study shows that major defects or reason for rejection of product or component during manufacturing process were shrinkage non-metallic inclusions, micro cavity and gas holes. All defects that are occurring during the manufacturing process are studied and the possible causes for defects are shown in Fishbone diagram. The Fishbone diagram or figure may be called as cause defect. Shrinkage mainly occurs due to lack of accounting error, lack of feed and ineffective inventory. The basic phenomena for lack of feed are that while hydrogen bureaucracy gasoline holes and porosity in aluminum casting, due to the amount of the hydrogen present in molten metal. The hydrogen absorbing capacity of molten metal is due to temperature effect.

Key Words: (Size 10 & Bold) Key word1, Key word2, Key word3, etc (Minimum 5 to 8 key words)...

1. INTRODUCTION

Low Pressure Die Casting

Die cast classify can be into two type (1) High pressure die casting (2) low pressure die casting. As we know that aluminum alloy wheel manufacturing is done by low pressure die casting. The casting is the oldest manufacturing process so the accuracy of the process is very high and the surface finishing is also good. In low pressure die casting the ceramic tube is connecting to steel die above and extends into a furnace of a molten metal below. The mould that's made in the metallic normally solid iron or die metallic is discipline with the aid of upward displacement of molten steel for sealed melting pot. The displacement is effected by low pressure of dry air (.5-1kg/mm²) on the surface metal on the path. Once the molten metal has solidify the air pressure is reduced alloying the rest of metal still in liquid form in the tube to raced back into the furnace. since the machine the upward filling calls for no runners and risers. There is not often of any wastage of metal As high-quality pressure maintained to force the metallic to fill the recesses and cavity due to which we can get excellent getting surface quality, finishing and soundness are produced high, also get high production rate thicker part up to 2.5mm. If we want to improve strength we require high temperature heat treatment.

Al alloy Wheel Production Process:

It is used for the following steps:

Melting of Al Alloy

Degassing Process

Low Pressure Die Casting Solidification of Al Alloy X-Ray Inspection

2. METHODOLOGY

2.1 Defect Diagnostic Approach

Defect analysis in casting defects is performed the usage of strategies like

1. Historical data analysis
2. Cause-effect diagrams
3. Design of experiments
4. Root cause analyse

3. ANALYSIS

3.1 Historical Data Analysis

For investigation of purpose behind dismissals in castings and do examination of fundamental driver which influence the most to the deformity in throwing, information for event of imperfections for one day was gathered from one of driving Al compound throwing industry. Utilizing authentic information examination [2], check sheets have been readied which distinguishes event surrenders in aluminum amalgam castings.

Pareto Diagram for Defects

The guideline proposes that when various elements influence a circumstance, less factors will be responsible for the vast majority of the effect. This is nearly the same as 80/20 hypothesis that you may have known about. It says that 80% of the effect is made by 20% of causes.

To set up a Pareto diagram information sheet posting the donors, their individual aggregates in plummeting request. Compute combined aggregates, rates of general aggregate and total rate and record them in a similar outline. At that point draw two vertical tomahawks and a level hub. At that point check the left hand vertical pivot with tally or recurrence and the correct hand vertical scale with rates with a scale from 0% to 100%.

There are many software solutions available for this proposes like Minitab, Excel etc. We have used Minitab for this proposes. Using the data collected for different casting defects pareto diagram have been drawn as shown in Figure 4.1, 4.2 and 4.3. Fig 4.1 represent the overall all the causes of rejection and their corresponding frequency and percentage and their cumulative percentages.

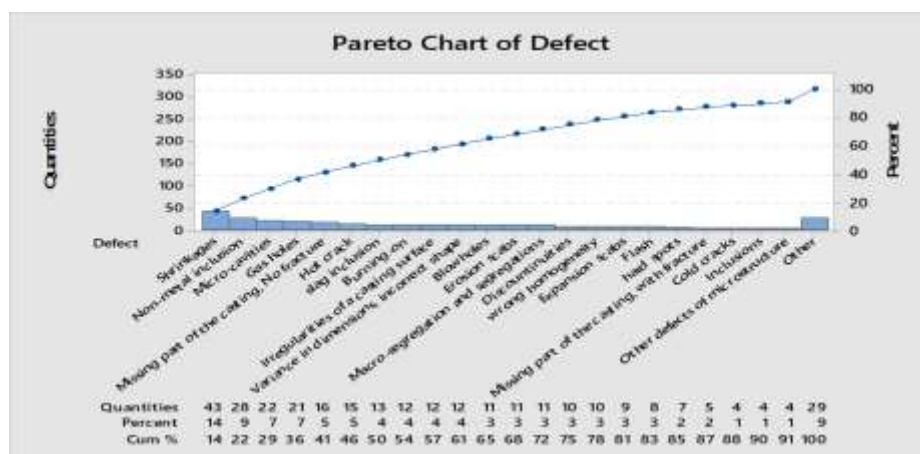


Fig 4.1: Pareto Chart of defect showing all causes of defect

Fig 4.2 speak to a portion of the causes, whose add to the 90% of the reasons for dismissal, which dispose of the lower recurrence causes and higher recurrence causes stay in diagram and their relating recurrence and rate and their aggregate rates.

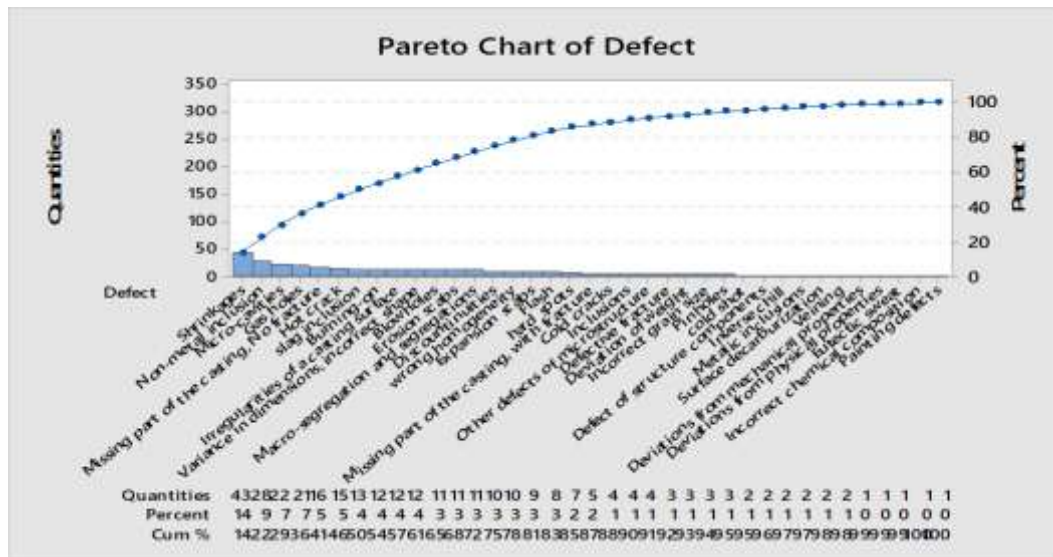


Fig 4.2: Pareto Chart of defect showing top 90% causes of defect

Fig 4.3 speak to a portion of the causes, whose add to the 80% of the reasons for dismissal, which take out the lower recurrence causes and higher recurrence causes stay in outline and their relating recurrence and rate and their combined rates. This take after the Pareto control of 80/20. As indicated by which 20% of the reason is in charge of 80% dismissal of Part.

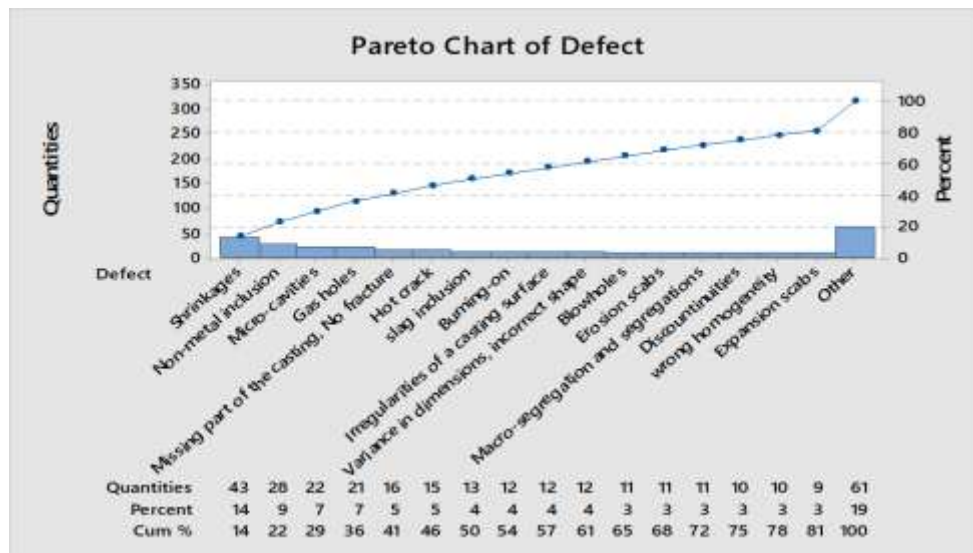


Fig 4.3: Pareto Chart of defect showing top 80% causes of defect

After studying the Pareto Chart shown in figure 4.1, 4.2 and 4.3, we can conclude that the major 4 reason for rejection in Al alloy casting were due to

1. Shrinkages
2. Non-Metal inclusion
3. Micro-cavities
4. Gas holes etc.

DETAILED ANALYSIS OF THE MAJOR DEFECT-SHRINKAGES

Shrinkage absconds happen when nourish metal isn't accessible to make up for shrinkage as the metal hardens. Shrinkage imperfections can be part into two distinct composes: open shrinkage deserts and shut shrinkage defects.[13] Open shrinkage surrenders are available to the environment, in this manner as the shrinkage pit frames air adjusts. There are two kinds of outside imperfections: pipes and folded surfaces. Funnels frame at the surface of the throwing and tunnel into the throwing, while buckled surfaces are shallow holes that shape over the surface of the throwing.

Shrinkage Porosity

There are two primary sorts of porosity issues in the metalworking business: shrinkage porosity and gas porosity. Shrinkage is by a long shot the most well-known compose and can as a rule be identified on the surface of a cast part by what have all the earmarks of being little gaps or splits. These gaps may appear to be round, yet are really precise fit as a fiddle and tend to form branching internal fractures [17]. Thick multi-angled parts are most susceptible to such shrinkage, which occurs as the metal cools and solidifies in a non-uniform pattern.

Types of Casting Shrinkage

There are four types of shrinkage that can occur in metal castings: cavity, sponge, filamentary, and dendritic shrinkage.

- **Cavity shrinkage:** This imperfection happens when two distinct wellsprings of liquid material are joined to make a typical front while cementing is as of now taking place [18]. An absence of extra bolster material to fill in the collecting holes can additionally worsen the whole shrinkage issue.
- The subsequent factors provide an explanation for how shrinkage hollow space happens in castings
 - It appears in regions with wonderful jagged barriers.
 - Whilst steel solidifies among two original streams of soften coming from opposite guidelines to join a not unusual the front, hollow space shrinkage happens.
- **Sponge shrinkage:** This for the most part emerges in the thicker midriff of the throwing item and causes a thin grid surface like fibre or dendrites to create.
- Sponge shrinkage can be distinguished from zones of frilly surface with diffuse layouts as appeared in Figure 2.
- It might be dendritic or filamentary shrinkage.

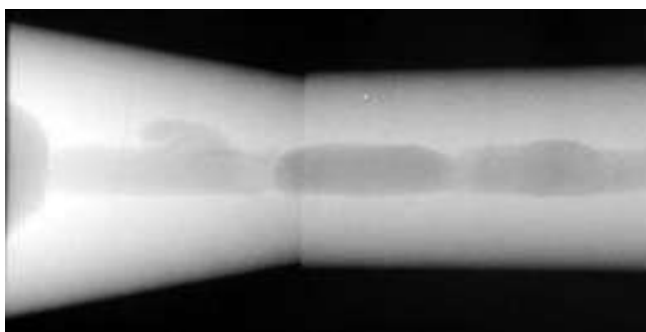


Figure 4.5: Very fine line type dendritic shrinkage

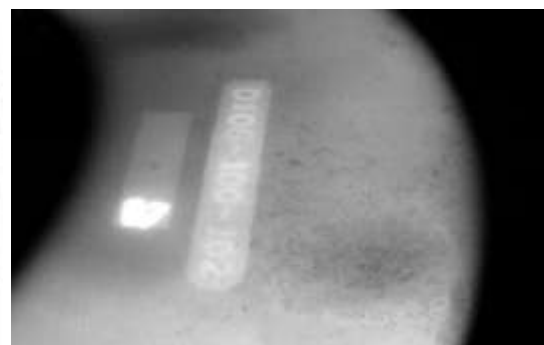


Figure 4.4: Image of sponge shrinkage

- **Filamentary shrinkage:** This outcomes in a system of ceaseless splits of different measurements and densities, as a rule under a thick area of the material. It can be hard to identify, and the break lines have a tendency to be interconnected [19].

This kind of shrinkage normally happens as a nonstop structure of associated lines of variable length, width, thickness.

- **Dendritic shrinkage:** Dendritic breaks are limited, haphazardly appropriated lines or cavities that are regularly detached. They are commonly more slender and less thick than filamentary splits.

The elements that impact the formation of shrinkage cavities are as follows:-

Metal Quality

- **Solidification range:-** If the hardening is expansive, the shrinkage hole tends to appear as act on cavity in the top floor of the throwing. On the off chance that the hardening is short, the pockets of fluid can soon end up disconnected from the exterior upper surface and these will offer ascent to major interior shrinkage holes..[20]
- **Shrinkage during solidification:-** The crystallization is by and large joined by a volume constriction, which is a marvel in composite which is in the fluid frame and permitted to cool in a bite the dust. This impacts basically in charge of the arrangement of shrinkage depressions.
- **Pouring Condition**
- **Pouring temperature:-** Alloys are typically poured at a temperature above the liquid temp. The degree of superheating influences the formation of shrinkage cavities [11].
- **Rate of pouring:-** The rate of pouring have to be constantly higher than the rate of hardening. As a rule for a large portion of the throwing, weighing from 1 to a few kgs, filling time of 8-15 sec is for all intents and purposes discovered alright. At the point when the filling time goes past 20 seconds, the liquid metal temp in the pouring spoon starts to drop down and begins solidifying in the scoop itself. For thick segment castings, it is discovered advantageous that if the castings are poured at slower charge [12].
- **Feeding systems:-** The manner by which the metal is presented in the pass on is of principal significance with deference to the arrangement of shrinkage pits. Throughout solidification, it is basic that the fluid stage ought to be in contact with a repository of fluid metal (Riser) whose temperature is higher than that of the metal in the kick the bucket cavity.

- **Die Condition**

initial temperature of the die:- A control diagram constantly has a central line for the typical, an upper line for the upper control oblige and a lower line for the lower control limit. These lines are settled from real data. By standing out current data from these lines, you can make derivations about whether the strategy assortment is unfaltering (in control) or is offbeat (wild, impacted by remarkable explanations behind assortment).[13]

- **Conductivity of the die:-**This also influences the solidification rate of the casting and consequently the formation of shrinkage cavities. Increasing the conductivity of the die hollow space locally causes chilling [14].
- **Casting Parameter**
- **Thickness:-** With thin section castings little shrinkage simplest takes **place**.
- **Shape:-** Shrinkage pits happen in the overwhelming bits, especially when they are separated from the principle riser at some phase of cementing.
- **Shell Sand Cores Parameter**
- Metal entry in to the die after impinging against shell sand core. The incoming metal over heats.

- **Factors Depending On the Molten Metal Quality**

- **Consideration content:-** When the liquid metal contains a greater amount of incorporations it nucleates shrinkage depressions. Pour metal in the gas test centre and watch painstakingly. In the event that the gas development takes place immediately subsequent to filling the cone, it implies the metal contains abundance incorporations and Hydrogen gas.

- **Evaluation of shrinkage by means of using fishbone diagram**

Fish bone diagram enables in following methods

- Once an imperfection has been distinguished, potential reasons for this bothersome impact must be broke down.
- Fishbone Diagram (Cause Effect Diagram) is the valuable device in discovering potential causes. By utilizing this fishbone

graph, every single contributing variable of imperfections and their relationship are shown in a place [17].

- It distinguishes zones of issue where information can be gathered and dissected.

The fish bone diagram for shrinkages is proven in determine

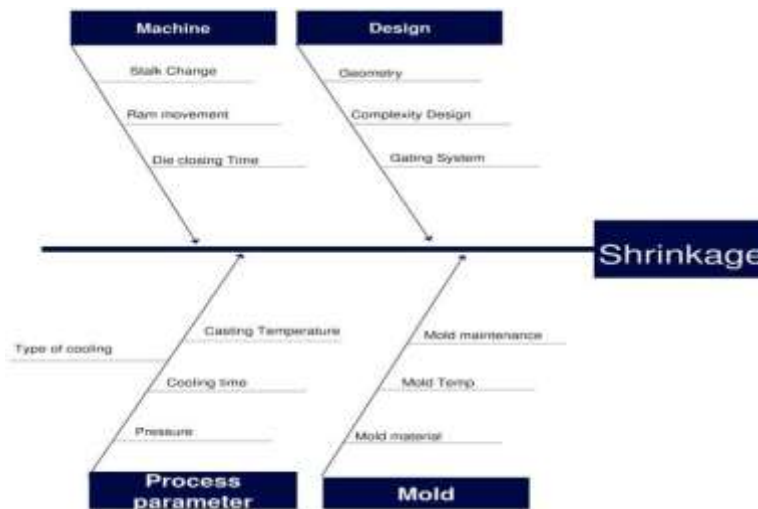


Figure 4.7: Cause-Effect diagram of the cause shrinkage defect in casting process

Detailed analysis of the Non-Metal inclusion

Non-metallic incorporations are concoction mixes and non-metals that are available in steel and amalgams. They are the result of substance responses, physical impacts, and pollution that happens amid the dissolving and pouring procedure. These incorporations are ordered by beginning as either endogenous or exogenous.[8] Endogenous considerations, otherwise called indigenous, happen inside the metal and are the consequence of concoction responses. These items hasten amid cooling and are commonly exceptionally small.[9] exogenous incorporations are caused by the capture of non-metals. Their size shifts extraordinarily and their source can incorporate slag, dross, transition deposits, and bits of the shape. Non-metallic inclusions, the presence of which defines purity of steel, are classified by chemical and mineralogical content, by stability and by origin. By chemical content non-metallic inclusions are divided into the following groups:

- sulphides (simple — FeS, MnS, Al₂S₃, CaS, MgS, Zr₂S₃ and others; compound — FeS·FeO, MnS·MnO and others);
- nitrides (simple — ZrN, TiN, AlN, CeN and others; compound — Nb(C, N), V(c, N) and others), which can be found in alloyed steel and has strong nitride-generative elements in its content: titanium, aluminium, vanadium, cerium and others;
- Oxides (simple — FeO, MnO, Cr₂O₃, SiO₂, Al₂O₃, TiO₂ and others; compound — FeO·Fe₂O₃, FeO·Al₂O₃, FeO·Cr₂O₃, MgO·Al₂O₃, 2FeO·SiO₂ and others.
- Free oxides — FeO, MnO, Cr₂O₃, SiO₂ (quartz), Al₂O₃ (corundum) and others
- Spinel's — compound oxides formed by bi and trivalent elements

Inclusion types

- **Oxide films:** In contact with encompassing air, fluid aluminium responds with the oxygen and shape an oxide film layer (gamma-Al₂O₃). This layer ends up thicker with time. at the point whilst aluminium is moved, this oxide film gets blended inside the soften.
- **Aluminium carbide:** In essential aluminium creation, aluminium carbides (Al₄C₃) starts from the lessening of alumina in which carbon anodes and cathodes are in touch with the blend. Later all the while, any carbon devices in contact with the fluid aluminium can respond and make carbides.

- **Magnesium oxides:** In aluminium mixes containing magnesium, magnesium oxides (MgO), cuboids (MgAl₂O₄-cuboid) and metallurgical spinel (MgAl₂O₄-spinel) can shape. They result from the response among magnesium and oxygen in the smooth. A more important measure of them will layout with time and temperature.
- After some time, graphite unmanageable in contact with aluminium will respond to make aluminium carbides (harder and more adverse inclusions). In aluminium amalgam containing magnesium, the magnesium responds with a few refractories to make rather enormous and hard considerations like spinels. Unreacted hard-headed particles originating from the corruption of stubborn materials which interacts with soften.
- **Chlorides:** Chloride incorporations (MgCl₂, NaCl, CaCl₂,) are an exceptional kind of consideration as they are fluid in fluid metal. At the point when aluminium sets, they frame round voids like hydrogen gas porosity however the void contains a chloride precious stone shaped when aluminium wound up colder.

5. CONCLUSION

The right recognizable proof of the throwing deformity at the underlying stage is fundamental for taking medicinal activities. This examination demonstrates the methodical way to deal with discover the main driver of a noteworthy imperfections in aluminum castings utilizing deformity indicative approach and additionally circumstances and end results graph. Pareto chart for absconds have been drawn and the real dismissals are because of shrinkages, breaks, incorporations. Cause impact charts have been drawn for shrinkages, gas hole, and inclusions. Data and Information has been gathered utilizing check sheets and the no of dismissals because of different shrinkages have been noted. Utilizing histogram it was noticed that the shrinkages were more. With the utilization of histograms it was noticed that the shrinkage percentage diminishes with the expansion in stalk change recurrence. An appropriate riser anticipates shrinkage development by keeping up a way for liquid stream. In this manner the sustaining of the bite the dust is accomplished by the viable riser. The connection between HF cleaning and considerations was plotted and is inferred that there is noteworthy abatement in the incorporations.

REFERENCES

- 1 Chokkalingam, B., and Nazirudeen, S. S. M., 2009, -Analysis of casting defect through defect diagnostic approach,|| J. E. Annals, Journal of Engineering Annals of Faculty of Engineering Hunedoara, Vol. 2, pp. 209-212.
- 2 Borowiecki, B., Borowiecka, O., and Szkodzińska, E., 2011, -Casting defects analysis by the Pareto method,|| Archives of Foundry Engineering, Vol. 11, pp. 33-36.
- 3 Excerpted from Nancy R. Tague's The Quality Toolbox, Second Edition, ASQ Quality Press, 2004, pages 255-257.
- 4 Ishikawa, Kaoru; (Translator: J. H. Loftus); Introduction to Quality Control; 448.
- 5 Weeden, Marcia M. Failure mode and effects analysis (FMEAs) for small business owners and non-engineers: determining and preventing what can go wrong. ISBN 0873899180. OCLC 921141300
- 6 Murat Caner Testik Christian H. Wei Yesim Koca Ozlem Muge Testik, Effectiveness of phase I applications for identifying randomly scattered out-of-control observations and estimating control chart parameters
- 7 Wilkinson, L. "Revising the Pareto Chart". The American Statistician. 60: 332-334. doi:10.1198/000313006x152243
- 8 M. Prashanth Pai¹, C. G. Ramachandra, T. R. Srinivas and M. J. Raghavendra, Reliability Assessment and Study of Quality Control Tools on Intermixer and Dump Mill of a Tyre Manufacturing Industry, MATEC Web Conf., Volume 144, 2018, International Conference on Research in Mechanical Engineering Sciences (RIMES 2017)
- 9 Erin E Shaughnessy Anita Shah Lilliam Ambroggio Angela Statile, Quality Improvement Feature Series Article 1: Introduction to Quality Improvement, Journal of the Pediatric Infectious Diseases Society, Volume 7, Issue 1, 19 February 2018, Pages 6-10,
- 10 Haridy, Salah; Maged, Ahmed; Kaytbay, Saleh; Araby, Sherif (2016-09-19). "Effect of sample size on the performance of Shewhart control charts". The International Journal of Advanced Manufacturing Technology: 1-9. doi:10.1007/s00170-016-9412-8. ISSN 0268-3768
- 11 Dr. D.N. Shivappa¹, Mr Rohit², Mr. Abhijit Bhattacharya³ -Analysis of Casting Defects and Identification of Remedial Measures A Diagnostic Study|| International Journal of Engineering Inventions Vol. 1, Issue6

- 12 Koppe, W.; Engler, S. Untersuchungen zur Speisertechnik bei Gußeisen Gießerei 49, 1962, P. 265 – 275 & 296 – 306
- 13 Hasse, S. Einige Probleme bei der Herstellung von 2-Takt-Zylinderblock aus Gußeisen Gießerei -Technic 22, 1976, P. 52 – 58
- 14 Nieswaag, H.; Prabhakar, K. V.; Zuitholt, A. J. Eigenschaften und Gefüge von gerichtet erstarrendem eutektische Gußeisen mit Lamellengraphit 43rd International Casting Congress, 1976, Bucharest, Paper No. 14, P. 14
- 15 Kocheisen, K. Das spezifische Volumen von Gußeisen Gießerei-Forschung 24, 1972, P. 133 – 140
- 16 Kahn, F. Zur Bedeutung der Konvektion für die Erstarrungslenkung von Gußwerkstoffen Gießerei - Forschung 24, 1972, P. 115 – 131