

# Virtual Dietitian: An Android based Application to Provide Diet

Prof. Prajkta Khaire<sup>1</sup>, Rishikesh Suvarna<sup>2</sup>, Ashraf Chaudhary<sup>3</sup>

<sup>1</sup>Professor. Prajkta Khaire, Dept. of Information Technology Engineering, SSJCOE, Maharashtra, India

<sup>2</sup>Student Rishikesh Suvarna, Dept. of Information Technology Engineering, SSJCOE, Maharashtra, India

<sup>3</sup>Student Ashraf Chaudhary, Dept. of Information Technology Engineering, SSJCOE, Maharashtra, India

\*\*\*

**Abstract** - This application provides the user with a complex algorithm which can provide the user with a diet plan based on his/her characteristics like height, weight, BMI etc. In Today's busy life everyone can just dream of having a proper balanced diet. A balanced diet is important because your organs and tissues need proper nutrition to work effectively. Without good nutrition, your body is more prone to disease, infection, fatigue, and poor performance. Children with a poor diet run the risk of growth and developmental problems and poor academic performance, and bad eating habits can persist for the rest of their lives. At the core of a balanced diet are foods that are low in unnecessary fats and sugars and high in vitamins, minerals, and other nutrients. The following food groups are essential parts of a balanced diet. Calories play a vital role in our growth and energy. A good diet can help you manipulate calorie intake based on your requirements. The proposed application will provide the user with a user-friendly User-Interface where they can create an account, manage their account and get the diet by the click of just one button. If the user is allergic to some kind of food, it also has the feature to contact an actual dietitian to consult. And there's also a page where the user can just read some interesting facts on health and human body. This application will save a lot of user's time by not actually visiting a dietitian and getting everything done on their phone.

**Keywords:** Health, Diet, BMI, Save Time

## 1. INTRODUCTION

Virtual dietitian android application is an application which provides a generic diet to its users. It acts as a diet consultant similar to a real Dietitian. This system acts in a similar way as that of a dietitian. A person in order to know his/her diet plan needs to give some information to the dietitian such as its body type, weight, height and working hour details. Similar way this system also provides the diet plan according to the information entered by the user. The system asks all his data from the user and processes it to provide the diet plan to the user. Thus, the user does not need to visit any dietitian which also saves time and the user can get the required diet plan in just a click. The system will give more accurate results as it accepts the data entered by the user and processes it depending on some metrics already known to the application on the basis of which a diet plan is generated and ask the user if the user accepts the

diet plan. If not accepted the system may also give an alternative diet plan. This application not only provides the user a proper & healthy diet but also provides the user all the workout information. There is a card for Work out details for all the workout programs for each body part. If a user wants to stay fit and eat healthy, he can surely follow the program provided to him. The Application also has a card for Health Facts on the home screen, which will provide all the general knowledge and some amazing facts on our human body and body parts. This Application can be a vital part of a user if he wishes to maintain his health and body perfectly and follow the diet plan & the workout plan provided to the user.

## 2. RELATED WORK

In the Literature Survey part, we observed the main goal of our project which was to be made and started searching for published papers on it which will help us in building the application. We went across many IEEE & Bayes Papers and found many papers which were some or the other way connected to our project based on health. We found many interesting papers as well as simple ones, we gathered the data from them. In the existing health care system, the primary requirement and disadvantage is physical presence of patient and doctor for every consultation. Also, there is a high chance of misinterpretation of data as well as occurrence of errors. Moreover, it is cumbersome and time consuming. With the increase in volume of patients in the health care institutes, traditional method of management has gone out of phase. As a result of this, an advanced Health Care Management System has been the demand of time. Some Systems were built directly for sole purpose of a single disease like Obesity, down syndrome etc. and some were general purpose applications, some projects website based and some were mobile application based. Our project was to be built on android so that people can get a good UI and also the app should be user-friendly. Some of the applications were paid-to-use and some were free, we wanted to build our project to be free to all. We started gathering information on the existing system and how it works and also a real dietitian works and calculates a diet based on a person's details like height, age, weight, gender etc. Even the internet helped us a lot for finding some basic formulas for calculating the diet and total calories. A person's diet totally depends upon what kind of activity he does in a day. If he/she has a hardworking job then they may lose more kcal as

compared to other person who doesn't do much of hard work, so we have to calculate the Kcal based on the activity level of the person. The total calories to be consumed should be balanced proportion of macro nutrients like Proteins, Carbohydrates and Fats, with the ratio of 2:2:1. In the existing health care system, the primary requirement and disadvantage is physical presence of patient and doctor for every consultation. Also, there is a high chance of misinterpretation of data as well as occurrence of errors. Moreover, it is cumbersome and time consuming. With the increase in volume of patients in the health care institutes, traditional method of management has gone out of phase. As a result of this, an advanced Health Care Management System has been the demand of time.

### 3. DESIGN & IMPLEMENTATION METHODS

#### 3.1 Design

In this, we design the overview and implementation of the project was discussed. The modules discussed to be implemented are listed with some details.

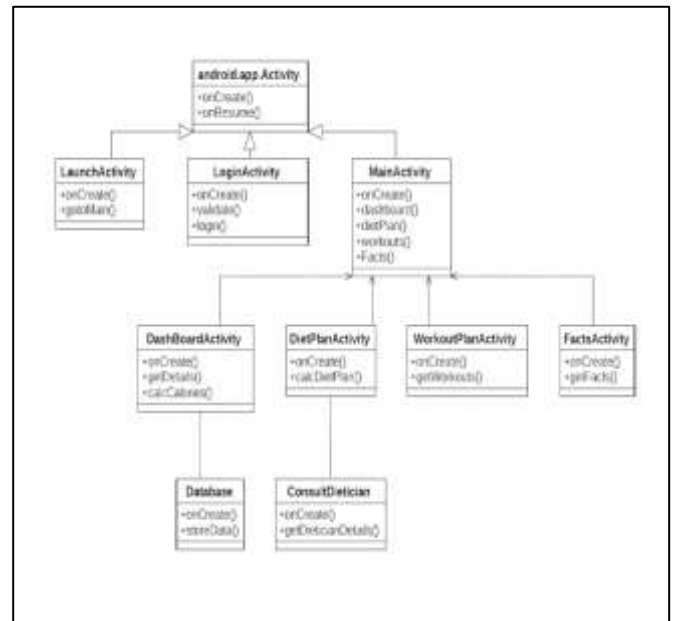
- User Dashboard
- New Diet
- Workouts
- Health Facts

In the Design Process, we first designed the flow of events in which the application would work, which can be seen in the flowchart below. In the Design Process, we first designed the flow of events in which the application would work, which can be seen in the flowchart below.

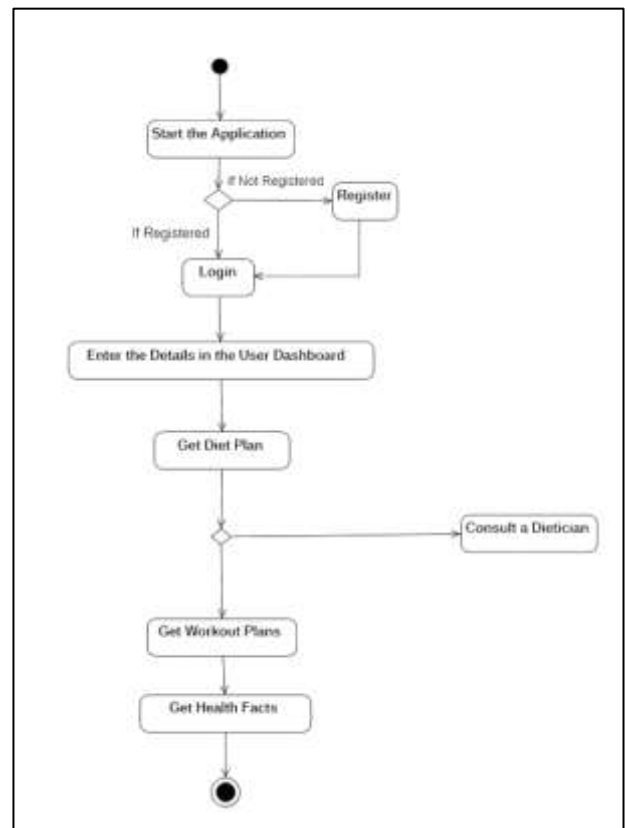
We have to design a user registration system to be able to gain user information to calculate their details, we designed the registration and login system using Google's Firebase - A cloud-based system to store our data and authentication. It has a very easy to use interface and the Doc helps in implementing it. In the Registration process the app will take the details of users like age, height, weight, gender etc. and store it in the firebase database.

There will be a dashboard card, where after the user logs in can view his details and also edit/ update the data. The Diet Plan card will give the user his data based on the details provided by the user while registering. All the calculations to get results was through research & getting the right formulas.

The Workout card was designed with the recycler view of the android's design system, it provides a list of items, we can change or update any items in the recycler view.



**Figure 1.** Class Diagram of the application



**Figure 2.** Flowchart of the application

#### 3.2 Implementation

Implementation is done with the help of the reference papers used and the internet, the application is built using Google's very own Android Studio. The Android Studio Docs helped us to implement certain design features to our app and also add API's for the firebase

database & authentication. A few tutorials helped us to create a stable application that can work properly.

The Formulas used for calculating the BMI (Body mass Index) and to calculate the total calories to intake was found on internet on some research.

*Formula for BMI:*

$$BMI = \text{Weight} / \text{Height}^2$$

Where,

Weight is in Kilograms,

Height is in Meters.

*Formula for calculating Maintenance Calories:*

$$\text{Calories} = (\text{Weight} * 22) * \text{Activity Multiplier}$$

Where,

Weight is in Kilograms,

Activity Multiplier refers to the amount of activity done in a day; it ranges from 1.2 for moderate work to 2.0 for extreme work done.

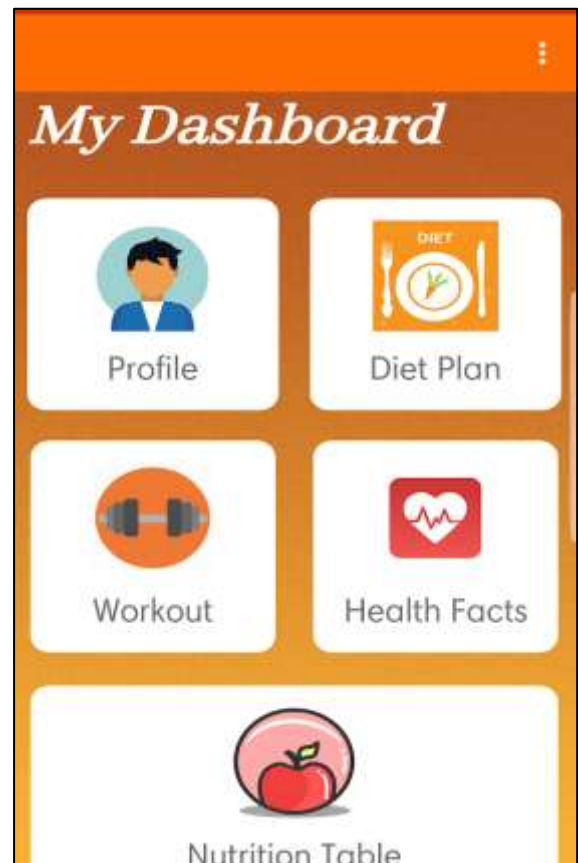
*Calculating Diet & Providing Diet:*

The Maintenance calories of the users has to be calculated on the basis of his height, weight, age etc. The Maintenance Calories are calculated with the help of the formula given above, once the calories are calculated then the system decides if the user is in a under-weight, healthy or overweight category based on his BMI.

The User is then suggested which type of diet program he / she should start, the user is still given the option to opt for the diet category like, Gain weight, Maintain Weight or Lose Weight. Based on the category selected the diet is provided by the application to the user. The Diet is based on the charts of diets calculated & created by expert Dietitians and Nutritionists all over the globe.

The User still has to option to consult a physical dietitian if he / she has some issues with the diet provided or has some food allergies or irritations, for example some people are Lactose Intolerant, so the dietitian will suggest some replacement for the lactose-based products in the diet.

Application UI:



**Figure 3.** Dashboard. Screenshot



**Figure 4.** Registration Page Screenshot



Figure 5. Diet Page Screenshot



The screenshot shows the 'Virtual Dietitian' app interface with the title 'LIST OF FOOD ITEMS WITH INFORMATION'. Below the title is a table with three columns: 'FOOD ITEM', 'CALORIES', and 'PREFERRED TIME'. The table lists various food items and their corresponding calorie counts and preferred consumption times.

FOOD ITEM	CALORIES	PREFERRED TIME
OatMeal	68/ 100gms	Breakfast
Idli/Dosa/Upma	116/80gms	Breakfast/Snacks
Banana	89/100gms	Breakfast/After Lunch
Apple	52/100gms	Breakfast/After Lunch
Flax Seeds	534/100gms	Breakfast
Whole Egg	155/100gms	Anytime
Egg Whites	52/100gms	Anytime
Tea	1/cup	Breakfast/Snacks
Coffee	>1/cup	Breakfast/Snacks
Whole Wheat Roti	265/100gms	Anytime
Plain Dal Curry	104/bowl	Lunch/Dinner
Chicken	239/100gms	Lunch/Dinner
White Rice	130/100gms	Lunch/Dinner
Beans	31/100gms	Lunch/Dinner
Lentils	116/100gms	Lunch/Dinner
SoyaBeans	446/100gms	Lunch/Dinner
Peanut Butter	588/100gms	Breakfast/Snacks
Whole Wheat Bread	247/100gms	Breakfast/Snacks
Panner/Cottage Cheese	343/100gms	Lunch/Dinner
Buttermilk	40/100gms	After Lunch/Dinner
Curd/Dahi	98/100gms	Lunch/Dinner
Almonds	140/20 Units	Anytime

Figure 6. Nutrition Tab Screenshot

#### 4. CONCLUSION

With the proposed application on mobile phones, we will be able to bring the Dietitian App on the palm of every individual. The application can be deployed on the cloud by integrating different servers through the cloud in its future iterations. With respect to the feedback of the App users' further improvements can be incorporated within the system to make it more users friendly. In our approach for implementing this project is we have implemented a virtual dietitian using android. Our system comprises of main components such as of a user login and an admin login. The software system allows the user to create their profiles and upload all their details and their BMI is calculated by the system. The admin can check each user details and can remove faulty accounts. People who are in need of a serious health care but are busy with their schedules, can start using our application and start following the diet and workout programs. With the help of this application, user doesn't have to go to an actual dietitian he can have a dietitian in the palm of his hands.

#### FUTURE SCOPE

- This application can be further improved by feedback suggestions from the users.
- This application can be improved with the help of an expert nutritionist who can help us creating different types of programs for different classification of users.
- The project is easily extensible and can be improved by further incremental releases of the same.
- We plan to focus on improving the overall performance of the system. Also, interaction between guider and dietitian through video calling and secure prescription will be focused upon.
- Some more ways to achieve dietitian will be focused.

#### REFERENCES

##### Published Survey Papers:

- [1] 2395-0056, Prof. DV Chandran, Sayali Adarkar, Apoorva Joshi, Preeti Kajbajd,, "Digital Medicine: An android based application for health care system", IRJET, Volume-4, 04Apr-2017.
- [2] 16-0227, Hilde A.E Geraedts, Wiebren Zijlstra, Wei Zhang, Sophie L.W. Spoorenberg, "Home Based Exercise Program Driven By Tablet Application & Mobility Monitoring, Public Health Research", Volume 14-E12, Feb-2017.
- [3] 73-93, Jonathan Lazar, Caitlin Woglon, Jeanhee Chunk, Alison Schwartz, Richard Moore, Co-

“Design Process of a Smart Phone App to Help People with Down Syndrome“

Manage their Nutritional Habits, Journal of Usability Studies, Volume 13, 02-Feb-2018.

[4] 305755235, Rodrigo Zenun Franco, Julie Anne Lovegrove, Rosalind Fallaize, Foustina Hwang, Popular Nutrition-Related Mobile Apps: A Feature Assessment, JMIR MHEALTH & UHEALTH, Volume-4 Issue-3, Aug-2016.

[5] 2456-3307, Talapanty Shweta, Vangari Sweta, Singh Deepali, Prof. Shrikant Sanas, Gaonkar Vaishnavi, “Artificial Intelligence Dietitian using Android”, IJSR-CSEIT, Volume-2, 09-Apr-2017.

**Documentations:**

- 1.Android Studio Documentations
- 2.Java Documentations