

# STUDY ABOUT THE ELEMENTS OF BATHROOM DESIGN

Mrs. RUCHIKA SHARMA<sup>1</sup>

<sup>1</sup>Assistant Professor, Department of Interior Design, SDPS Women's College, Indore, Madhya Pradesh, India

\*\*\*

**Abstract** -For master bathrooms design, we always try to incorporate: a double sink with drawer vanity, a shower, a toilet room, a storage cabinet, a bathtub and even a makeup vanity. If the space allows for all of this! The bath may be one of the smallest rooms in the home, but it demands a design that's big on style and practicality. Baths should indulge one's style, whether that's spa-like tranquility or an energetic contemporary look with pops of color. It could be ideal for high drama and touches of glamour. The bathroom sometimes is a place of refuge to soothe the soul; other times a showplace that must sparkle and dazzle.

High end breathtaking bathroom could be the ultimate escape, with a fireplace, luxurious finishes, in-ceiling speakers and a flat-panel TV for maximum relaxation.

**Key Words:** energetic contemporary, maximum relaxation, tranquillity.

## 1. INTRODUCTION

Luxury meets the next level when the bathroom is provided with heated floors and towel warmers. There is absolutely no limit to the drama.

"It's a safe place where you can get away."

Bathrooms once used to be the most neglected part of the design. But it's not the same any more. Bathroom design these days has become a style icon, a status symbol. More and more innovative ideas, efforts and money is being put to add desired luxury and pomp to it through different usage of the materials, the construction details, the fixtures and fittings or the accessories.

### 1.1 IMPORTANCE OF ELEMENTS OF DESIGN

While aesthetic appeal is a must, the key to a great bathroom is not only how good it looks, but how well it works. Whether you're planning a bathroom off the main, master, a powder room or the primary bathroom with access for all, there are some key features and considerations to ensure your bathroom is both beautiful and practical.

#### 1) Space

No matter the bathroom you are designing, it's vital to get the layout right. There are many factors that make up a good layout so when planning your perfect bathroom, consider the little details; how much space is between the toilet, vanity and shower? Is there ample room to move around and dry yourself? Do your doors have enough space to open and

close? These little things will all come together to create the perfect bathroom layout.

#### 2) Users

Once our team decide on a layout with a customer, we recommend compiling a 'wish list' of features, taking into consideration the practical requirements for each room. Thinking about the number of people the bathroom will accommodate will help you decide practical touches such as the need for double basins or showerheads, storage requirements and the number of towel rails in each bathroom

### 1.2 BASIC ANTHROPOMETRY OF WASHROOM

1. Shower, washbasins and WC's to bed space ratios must meet or exceed minimum levels: (Properties in Northern Ireland will be required to meet the tourism legislation)
  - 1 Star 1:10
  - 2 Stars: 1:10
  - 3 Stars: 1:6
  - 4 Stars: 1:6
2. There must be privacy between sexes for washing/showers and toilet facilities and wherever possible between members of the same sex and clearly designated.
3. All bath, shower and WC rooms to be adequately ventilated
4. Hand drying facilities and soap required in all public WC facilities.
5. All WCs to be lidded with a toilet roll holder, toilet paper and sanitary disposal bin (where appropriate) provided
6. Bath/Shower facilities to have clothes hooks and soap trays within each cubicle.
7. A shelf and electric razor point (or adapter available) with a mirror and towel rail close by to be provided.

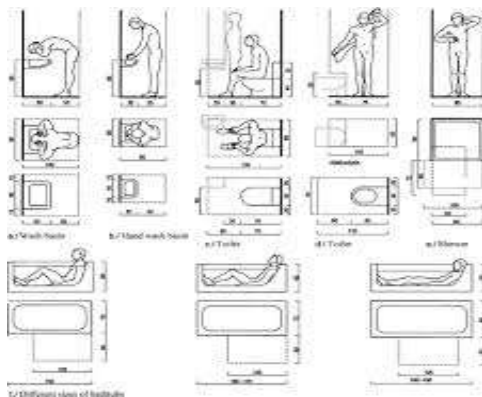


Figure 1

## 2. ELEMENTS OF WASHROOM

Bathrooms once used to be the most neglected part of the design. But it's not the same any more. Bathroom design these days has become a style icon, a status symbol. More and more innovative ideas, efforts and money is being put to add desired luxury and pomp to it through different usage of the materials, the construction details, the fixtures and fittings or the accessories.

**Counter Tops:** The counter top acts as the focal point of a bathroom and so is kept sleek and rich in appearance. The range of bathroom countertop material options is overwhelming, the style and durability of the chosen material are all key considerations.

One could choose from a wide range of materials from granite to marble, or from tiles to mosaic, or from quartz to travertine, or even hardwood to laminate. The material selection and the detailing can give the vanity top either an eclectic contemporary or a modern antique look. The cabinets are getting legs and open shelves where pretty bottles, rolled towels and other functional-but-fanciful items can be stored.



Figure 2

**Flooring:** The modern day bathroom floor can have the tactile feel; it could be light or dark, solid or patterned, sleek or textured, hard or cushioned.

Modern flooring options include ceramic tiles, vitrified tiles, mosaic tiles, hardwood, wood, laminates, stones, travertine, vinyl, carpet, bamboo, glass which can be used individually or in combination with one another. For an eco friendly

bathroom one can even choose bamboo or cork which resemble wood and have sound control qualities.



Figure 3

**Color:** Earlier there wasn't a lot of color in the bathroom, so more color is a newer trend. One still sees a lot of the white, crisp spa-like solutions, but even those often have bright accents. Neutral colors are giving way to bolder palettes that create a cheerful, fun place.

Bathrooms are treated as per the seasons. Use of cool spa colors such as blue and green for spring, and brighter beach colors such as pink and chartreuse for summer; warmer shades for fall, while red and maroon for winter are the latest trends. Colors like metallic gold, green and raspberry are also in.



FIGURE 4

**Lighting:** Till date the best preferred source of light is natural light. But to add luxury a variety of spotlights, mood lights, task lights and indirect lights are available for the bathrooms. Wall sconces or chandeliers are used to get a dramatic ambience. To add a soft romantic touch indirect or cove lighting on the floors is also used. Vapor proof lights are in trend for shower areas and infrared heat lamps are also in to provide a warm feeling after bath. A dash of accent lighting is given to highlight the plants or artwork.



Figure 5

**Bathroom Fixtures:** By choosing the perfect fixture that is basin, faucet, shower, bidet or the water closet one can take to resort like feel. One can add luxury by providing televisions in the shower, gas fireplaces built into tub walls, therapeutic lights that cause water to change colors. Body sprayers, rain shower heads, multi head showers are giving way to the traditional showers. Pedestal style basins are timeless space savers, and their bowls are available in oblong, rectangular, oval or amoeba like shapes. Basin materials may vary from porcelain to glass to cast iron or solid brass or nickel or oil rubbed bronze or even concrete. In recent times the height of the seat has increased to 16-18 inches from 14-15 inches as it is convenient to all including the physically challenged.



Figure 6

**2.2 LUXURY ELEMENTS:**

**Heated floors:** In-floor heating systems for bathrooms are luxury within reach. Electric mats or hot water pipes or hot air pipes placed underneath the floor add warmth to the much needed luxury bath.



Figure 7

**Steam showers:** After a long day, a steam shower with aromatherapy feature can infuse the senses with relaxation.



Figure 8

**Chromo therapy:** Colored lights are said to be therapeutic and so colors are been added to the shower areas to create mood.



Figure 9

**Back Splashes:** Backsplashes are bathroom jewelry, where one can express their personal style and add punch to a neutral space. Tile work is an art, and the materials available to create interesting designs range from recycled glass to metallic mosaics to interestingly cut ceramics, such as hexagonal and octagonal tiles.



Figure 9

### 3. CONCLUSION

High-end bathroom fixtures can add a luxurious and even artistic quality to the bath space. There is a constant development and research in the design field to add glamour, luxury and comfort to day to day life. Only need arises is to think out of the square box. There is a no restriction to one's imagination and creativity which can be positively utilized to create an awesome ambience in one's bathroom. More and more innovations are being thought of and being done. This could include changing the location of the bathroom to the terrace or amidst a huge garden of a farm house. It could be open to sky or fully loaded with all kinds of electrical gadgets. It may even include exotic plantation and use of rare metals and precious stones in the bathroom. All in all one can conclude that innovation is an ongoing process which if ends will make life stagnant.

### REFERENCES

1. Building Construction by Bindra and Arora.
2. Building Services by Rangwala
3. [www.bathroomdesigns.com](http://www.bathroomdesigns.com)
4. [www.innovativebathrooms.com](http://www.innovativebathrooms.com)
5. [WWW.JAQUARINDIA.COM](http://WWW.JAQUARINDIA.COM)
6. [WWW.BATHROOMWORLD.COM](http://WWW.BATHROOMWORLD.COM)

### AUTHOR



NAME – MRS. RUCHIKA SHARMA  
ASSISTANT PROFESSOR OF SDPS  
WOMENS COLLEGE INDORE. MSC  
IN INTERIOR DESIGN, MASTER IN  
BUSINESS MANAGEMENT.