

SCHEDULING AND LABOUR MANAGEMENT FOR RESIDENTIAL BUILDING PROJECT USING PRIMAVERA

Abhishek G.B¹, Dr. R.M Mahalingegowda²

¹Assistant Professor, Department of Civil Engineering, P.E.S College of Engineering, Mandya, Karnataka, India

²Professor, Department of Civil Engineering, P.E.S College of Engineering, Mandya, Karnataka, India

Abstract - Construction industry helps in the nation's economic growth in developing countries like India. Effective project management helps in achieving the aim of the project. Project management software's have become a necessary tool in the construction industry. Primavera P6 is effective project management software tool used for scheduling, distributing resources, monitoring and controlling various activities involved in the project. This present study involves scheduling, assigning resources and management of labours for various activities at Foundation's Silver Spring Residential project, Mysore. The scheduling of various tasks is done for 4 months. Labour management helps in the distribution different types of labours to different activities. An efficient schedule with controlling and monitoring of the project and management of labours during execution helps to complete the project within the target time and cost.

Key Words: Project Management, Schedule, Labour management, Primavera P6.

1. INTRODUCTION

Construction sector is the largest sector in the world. In India it is the second largest after agriculture. Construction industry leads to the economic growth of the country. Construction sector consumes a very wide employment opportunities for the labours. The rural areas need a development in economic, environment and land use planning to support the status of development in urban regions. Large amount of money and jobs are provided in construction industry than any other industry in India. Construction plays an important role in the development of agriculture, transportation, infrastructure of civil, manufacturing and communication sectors. Generally construction sectors are more challenging compared to other industries because of its unique nature and every project has its own kind. And construction projects are constrained by money, quality and time. Achieving the goal or project in time shows the effective project management. If the project is inadequate i.e., lack of proper contract planning and management, implementation of poor planning, lack of management during execution leads to cost and time overrun. By proper skillful management, the project can be completed in time with the estimated cost.

1.1 Schedule of the Project

The scheduling of construction project is a complete and powerful management tools. This process determines the work activity timings which identified in the process of planning and finally it shows in the schedule of project. "Scheduling is a sequencing and arrangement of each activities with the graphical representation required to complete the work".

Steps initiated in schedule development of the project are as follows

- Estimate the time required for each activity.
- Time required for completion of project is estimated.
- Defining interval of the time in each activity i.e., when to start and finish.

1.2 Labour Management

It is an interacting relationship between labour and management. In construction sector, the project mainly focuses on optimum resources usage and speedy completion of the project. It is one of the most important concept in construction project management. If labour management is effective, the project will be complete in time with the quality. Labour productivity is one of the major problem in construction industry. About 30 to 50% of cost depends on labour management.

2. METHODOLOGY

In the present scenario construction projects have become wide and complex so the companies started developing the software for project management such as Microsoft project, primavera P3, P6 etc. The study involves scheduling and labour management. The following steps are involved in the methodology.

2.1 Schedule Development

In this process the project manager or scheduler should estimate the time and develop the project schedule. The schedule layout is prepared for the project activities, determining the start and finish date, finalizing the durations and sequencing of activities. Activity duration and resource estimating are repeated several times to actually come up with the schedule of the project. The project schedule is developed by using Primavera software with the help of collected data. Once the project is scheduled the base line is set to track the progress. The activities are as per the calendar set by the company.

To develop the schedule of Foundations Silver Springs residential building project, the following steps are carried out:

- Defining of activities in the project
- The sequencing of the activities in the project
- Fixing of start and finish date for the activities
- Estimation of the resources required
- Using above information schedule is developed by Primavera software.

Activity ID	Activity Name	Original Duration	Resources	Start	Finish
Foundation Silver Spring final		126		14-Dec-15 A	11-May-16
Structural work		100		14-Dec-15 A	11-Apr-16
4th floor		32		14-Dec-15 A	19-Jan-16
Column		6		14-Dec-15 A	19-Dec-15 A
A1020	Concreting	1	C.Mason, C.M.Hel	19-Dec-15 A	19-Dec-15 A
A1010	Shuttering	3	Carpenter, C.Help	16-Dec-15 A	18-Dec-15 A
A1000	Reinforcement	4	Filter, F.Helper, U.	14-Dec-15 A	17-Dec-15 A
Slab and Beam		21		23-Dec-15 A	15-Jan-16
A1050	Concreting	1	C.Mason, C.M.Hel	15-Jan-16	15-Jan-16
A1040	Reinforcement	9	Filter, F.Helper, U.	05-Jan-16 A	14-Jan-16 A
A1030	Shuttering	11	Carpenter, C.Help	23-Dec-15 A	04-Jan-16 A
Staircase		2		16-Jan-16 A	19-Jan-16 A
A1090	Concreting	1	C.Mason, C.M.Hel	19-Jan-16 A	19-Jan-16 A
A1070	Reinforcement	1	Filter, F.Helper, U.	18-Jan-16 A	18-Jan-16 A
A1060	Shuttering	1	Carpenter, C.Help	16-Jan-16 A	16-Jan-16 A
5th floor		35		20-Jan-16 A	02-Mar-16 A
Column		6		20-Jan-16 A	29-Jan-16 A
A1110	Concreting	1	C.Mason, C.M.Hel	29-Jan-16 A	29-Jan-16 A
A1100	Shuttering	3	Carpenter, C.Help	25-Jan-16 A	28-Jan-16 A
A1090	Reinforcement	4	Filter, F.Helper, U.	20-Jan-16 A	23-Jan-16 A
Slab and Beam		21		30-Jan-16 A	23-Feb-16 A

Fig -1: Schedule preparation

2.2 Planning Resources

- Identifying the resources required for the Foundation Silver Springs residential building project.
- Selecting the specific resources required for the project (Labour, Non-labour, material).
- Estimating the labour required for each activity and defining different types of labours in Primavera.

Display Current Project's Resources					
Resource ID	Resource Name	Resource Type	Unit of Measure	Primary Role	Default Units / Time
R-3.2	F.Helper	Labor			54/d
R-3.2	M.Helper	Labor			32/d
R-4.2	P.M.Helper	Labor			96/d
R-5.2	C.M.Helper	Labor			80/d
R-6.2	E.Helper	Labor			32/d
R-7.1	U.Labour	Labor			160/d
R-1.2	C.Helper	Labor			144/d
R-2.1	Filter	Labor			96/d
R-3.1	Mason	Labor			32/d
R-4.1	P.Mason	Labor			80/d
R-5.1	C.Mason	Labor			24/d
R-6.1	Electrician	Labor			24/d
R-1.1	Carpenter	Labor			96/d

Fig-2: Types of labours

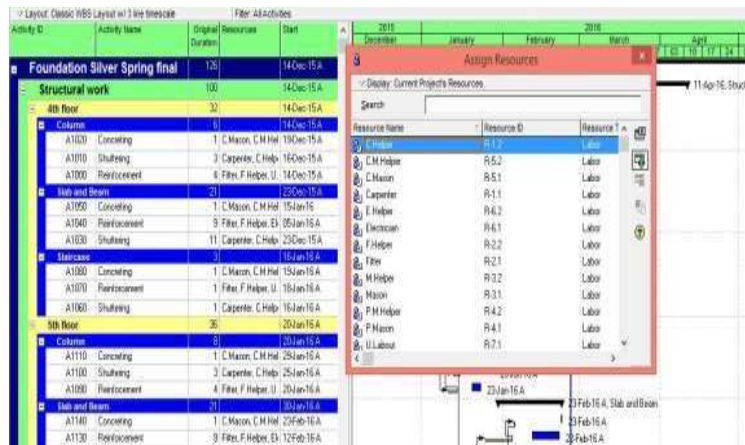


Fig-3: Assigning of labours

2.3 Project Monitoring and Controlling

As the project starts, the necessary data's are collected at every stages and periods. Updating the progress of the project using Primavera. The required data's for updating the progress of project are

- Actual start date and end date
- Percentage of complete of the activities
- Remaining duration to complete
- Resources used
- Remaining resources to complete the activity
- Comparison between planned and actual schedule

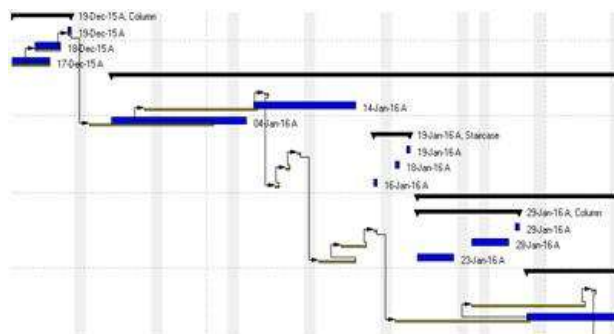


Fig-4: Comparison between planned and actual schedule

3. RESULTS AND DISCUSSIONS

Results are final product which comes from the overall process of the project. By doing the schedule of the project efficiently it leads to the success. While preparing the schedule using primavera software the constraints should be mentioned and delaying of project in execution by creating baseline.

3.1 Schedule of the Project



Fig-5: Schedule of the structural work



Fig-6: Schedule of the structural work



Fig-7: Schedule of the finishing work

3.2 Labour Assignment for Activities

Calculation of labour units required for the activities in project are assigned for the activities. The labours are assigned for the prepared schedule in Primavera software. The Figure shows the resources sheet of Primavera which contains different types of labours used in the project.

Resource ID	Resource Name	Resource Type	Unit of Measure	Primary Cost	Default Units/Day
R01	Concrete	Labour			1440
R02	Choker	Labour			3600
R03	Shoe	Labour			3600
R04	Formwork	Labour			3600
R05	Rebar	Labour			3600
R06	Formwork	Labour			3600
R07	Formwork	Labour			3600
R08	Formwork	Labour			3600
R09	Formwork	Labour			3600
R10	Formwork	Labour			3600
R11	Formwork	Labour			3600
R12	Formwork	Labour			3600
R13	Formwork	Labour			3600
R14	Formwork	Labour			3600
R15	Formwork	Labour			3600
R16	Formwork	Labour			3600
R17	Formwork	Labour			3600
R18	Formwork	Labour			3600
R19	Formwork	Labour			3600
R20	Formwork	Labour			3600
R21	Formwork	Labour			3600
R22	Formwork	Labour			3600
R23	Formwork	Labour			3600
R24	Formwork	Labour			3600
R25	Formwork	Labour			3600
R26	Formwork	Labour			3600
R27	Formwork	Labour			3600
R28	Formwork	Labour			3600
R29	Formwork	Labour			3600
R30	Formwork	Labour			3600
R31	Formwork	Labour			3600
R32	Formwork	Labour			3600
R33	Formwork	Labour			3600
R34	Formwork	Labour			3600
R35	Formwork	Labour			3600
R36	Formwork	Labour			3600
R37	Formwork	Labour			3600
R38	Formwork	Labour			3600
R39	Formwork	Labour			3600
R40	Formwork	Labour			3600
R41	Formwork	Labour			3600
R42	Formwork	Labour			3600
R43	Formwork	Labour			3600
R44	Formwork	Labour			3600
R45	Formwork	Labour			3600
R46	Formwork	Labour			3600
R47	Formwork	Labour			3600
R48	Formwork	Labour			3600
R49	Formwork	Labour			3600
R50	Formwork	Labour			3600
R51	Formwork	Labour			3600
R52	Formwork	Labour			3600
R53	Formwork	Labour			3600
R54	Formwork	Labour			3600
R55	Formwork	Labour			3600
R56	Formwork	Labour			3600
R57	Formwork	Labour			3600
R58	Formwork	Labour			3600
R59	Formwork	Labour			3600
R60	Formwork	Labour			3600
R61	Formwork	Labour			3600
R62	Formwork	Labour			3600
R63	Formwork	Labour			3600
R64	Formwork	Labour			3600
R65	Formwork	Labour			3600
R66	Formwork	Labour			3600
R67	Formwork	Labour			3600
R68	Formwork	Labour			3600
R69	Formwork	Labour			3600
R70	Formwork	Labour			3600
R71	Formwork	Labour			3600
R72	Formwork	Labour			3600
R73	Formwork	Labour			3600
R74	Formwork	Labour			3600
R75	Formwork	Labour			3600
R76	Formwork	Labour			3600
R77	Formwork	Labour			3600
R78	Formwork	Labour			3600
R79	Formwork	Labour			3600
R80	Formwork	Labour			3600
R81	Formwork	Labour			3600
R82	Formwork	Labour			3600
R83	Formwork	Labour			3600
R84	Formwork	Labour			3600
R85	Formwork	Labour			3600
R86	Formwork	Labour			3600
R87	Formwork	Labour			3600
R88	Formwork	Labour			3600
R89	Formwork	Labour			3600
R90	Formwork	Labour			3600
R91	Formwork	Labour			3600
R92	Formwork	Labour			3600
R93	Formwork	Labour			3600
R94	Formwork	Labour			3600
R95	Formwork	Labour			3600
R96	Formwork	Labour			3600
R97	Formwork	Labour			3600
R98	Formwork	Labour			3600
R99	Formwork	Labour			3600
R100	Formwork	Labour			3600

Fig-8: Resource sheet

3.3 Tracking

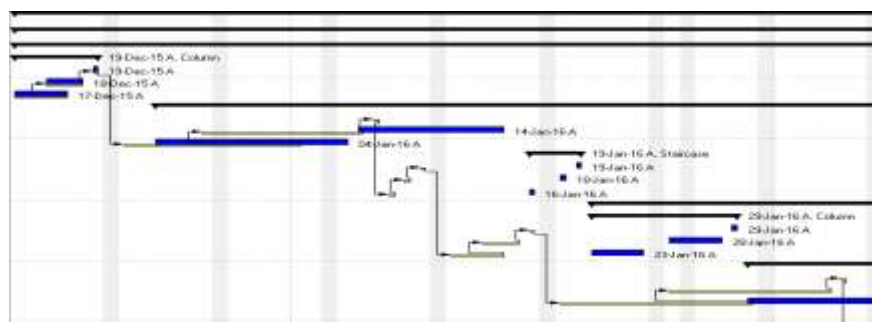


Fig-9: Shows the Comparison of Planned and Actual Work

4. CONCLUSIONS

- Project management software like Primavera helps to plan, schedule, monitor and control the activities involved in the construction project more effectively and efficiently.
- The graphical representation of various activities provides information about the critical path and delay of the project.
- Labour management acts as a tool to optimize the various types of labours involved in various activities.
- An effective and efficient usage of labour management improves the productivity of the project so as to achieve the organization goal.

REFERENCES

1. Robert .F., (2011), "Frequency of Use and Importance of Software Tools in Project Management Practice in Croatia", Journal of construction engineering and management ©ASCE. Vol. 3. Pp 465-470.
2. Amir R, Muhammad R, Syed A.A, Huda .K and Zain .H (2012), " Labor Management Relations", Double Blind Peer Reviewed International Research Journal Publisher: Global Journals Inc. (USA) Online ISSN: 2249-4588,m ISSN: 0975-5853 Volume 12 Issue 8 Version 1.0
3. Nagaraju B, Sivakonda R and Chaudhuri R.A (2012), "Resource Management in Construction Projects – a case study", An International Journal (ESTIJ), ISSN: 2250- 3498, Vol.2, No. 4.
4. Siddesh K.P, Satya D and Rani S. K (2013), "Human Resource Management Techniques Dealing With Deficit and Retention of Skilled Labor in Construction industry", International Journal of Scientific and Research Publications, ISSN 2250-3153, Volume 3, Issue 9.
5. Andrew F.T and Sachin .P (2013) "Project Monitoring and Control using Primavera", International Journal of Innovative Research in Science, Engineering and Technology, Vol. 2, Issue 3, Pp 762.
6. Mistry .S and Bhatt .R (2013) "Critical Factors Affecting Labour Productivity in Construction Projects: Case Study of South Gujarat Region of India", International Journal of Engineering and Advanced Technology, ISSN: 2249 – 8958, Volume-2, Issue- 4.
7. Vijay A.R and Kothai P.S (2014), " Improving the Labour Productivity through Other Resources in Construction Field", International Journal of Engineering Research and General Science, ISSN 2091-2730, Volume 2, Issue 2.
8. Satinder .C, Arvind .D (2014), "Developing an Efficient Schedule in Primavera P6: Significance of Activity ID & Descriptions", International Journal of Innovative Research in Science, Engineering and Technology (An ISO 3297: 2007 Certified Organization) Vol. 3, Issue 7, Pp 15022.
9. Subramani .T and Chinnadurai .K (2015), "Construction Management and Scheduling of Residential Building Using Primavera", International Journal of Application or Innovation in Engineering & Management, Volume 4, Issue 5, ISSN 2319 – 4847 .
10. Regina M.X and Rathinakumar .V (2015), "Reducing Construction Constraints using Primavera", Indian Journal of Science and Technology, ISSN: 0974-6846, Vol 8(14), Pp65653.
11. Seetharaman .S, (2003). "Construction Engineering and Management", Umesh Publications, Fourth edition.
12. Sowmya .L, (2014). "PMP Project Management Concept" CADD Centre Training Service Private Limited.
13. www.free-management-ebooks.com/faqpm/time-06.htm
14. www.free-management-ebooks.com/faqpm/time-04.htm