

# A STUDY ON THE VARIATION OF STRENGTH PROPERTIES OF CONCRETE WITH PARTIAL REPLACEMENT OF CEMENT USING NANO-SILICA (NS) AND FLY ASH (FS)

PIDATHALA JAYA PRAKASH<sup>1</sup>, KADAPA SHAMMAD BASHA<sup>2</sup>,

<sup>1</sup>PG Student In Structural Engineering, Department Of Civil Engineering, Chadalwada Venkata Subbaiah College Of Engineering-Tirupati

<sup>2</sup>Assistant Professor In Structural Engineering, Department Of Civil Engineering, Chadalwada Venkata Subbaiah College Of Engineering- Tirupati

\*\*\*

**Abstract** - This paper studies the recent investigations and development of combined application of Pozzolanic additions - Nano-Silica (NS) and Fly Ash (FA) on the strength properties of concrete for sub sequential growth of concrete industry. This investigation not only saves the natural resources but also controls the environmental pollution by usage of wastes. The limited work is done on partial replacement of Fly Ash and Nano-Silica in cement paste, mortar and concrete. In the present study the cement is partially substituted by 20% and 30% of Fly Ash and Nano-Silica 2.0%, 4.0% and 6.0% by weight. To understand the application of Fly Ash and Nano-Silica various literatures have been reviewed and their influence on Compressive Strength, Bending Strength (Flexural Strength), Elastic Modulus or Young's Modulus and Tensile Strength of M35 grade of concrete is investigated.

The experimental investigation results of concrete are tabulated using the combination of various proportions of Fly Ash and Nano-Silica are collate with that of Controlled Concrete. The mechanical strength development and durability properties of concrete are greatly influenced because of this combined application of Nano-Silica and Fly Ash compared to the Controlled Concrete properties. The sustainable increase in the various strength characteristics of concrete prepared using Nano-Silica and Fly Ash can be accredited to the efficacious packing of colloidal particles and the need of additional binder in the application of Fly-Ash and Nano-Silica.

**Keywords:** Nano-Silica (NS), Fly Ash (FA), Controlled Concrete, packing of Colloidal particles, Compressive Strength, Flexural Strength, Split Tensile Strength, Partial replacement

## 1.INTRODUCTION

Concrete has been recommended as a construction material in wide range. At present in construction, prior to strength, the durability of concrete also has importance. The minimum cement content to satisfy the strength and durability requirements. The Indian standard code of IS 456:2000 for plain concrete design is used. This results in usage of cement in huge content. The cement production results in evolution of lots of carbon dioxide resulting in environment mortification. By usage of additive Pozzolanic

alternative materials instead of cement up to certain proportion will be another solution for this problem. Earlier studies show that the usage of Fly-Ash (FA), Micro Silica (MS), Ground Granulated Blast Furnace Slag and Kaolinite as replaced materials which results in increases in strength and durability. By introducing Nano sized materials as a partial replacement of cement which improves the performance of cement.

Because of many experimental researches on Nano particles, Nano-Silica is available as replacing material of cement in making concrete. Nano-Silica (NS) is a Nano-sized, highly reactive nebulous silica. Because of Nano-Silica particle is as small as other particles and also having very large surface area as the substitute materials, its usage comparatively intensify the concrete performance up to extensive range. This amalgamation of Nano-Silica and fly ash as a substitute material for cement has to be scrutinized. These particles are very tiny and generally allow forming a group of mass due to its large surface influence, consistent dispersion of these fine particles is a predominant thing to get results up to serviceable or advantageous results.

The substitutes of cement i.e., fly ash and Nano-silica which is highly prospective is to be understandable and used in rightful manner. Until last decade a squander material Nano-Silica is now emerged as an environmental protector with its less toxic nature when compared with cement. Now-a-days the CDM technology or Clean Development Mechanism exceptionally encouraged by both cement industries and also government. Advanced counties like United States and Japan are responsible for 35%-40% of global discharges, besides this India accords up to 3.5% of the Greenhouse emissions (GHS) when compared with normal average of 5.5%.

By the end of every year in India with predominant usage of substitute materials i.e., fly ash and Nano-silica the emission of Carbon dioxide are

reduced by 30 million tons, coal powder by 20 million tons and lime powder by 35 million tons. The possible levels of this emission of greenhouse gases are to be controlled up to the mark.

In India prior to usage of cement the Alternative materials are highly used as replaceable materials for partial replacement of cement content in concrete mixture. This Supplementary Cementing materials such as fly ash, Nano-Silica, Blast furnace slag and silica fume are most frequently used. Because of its environmental protective nature and also it's high occurrence the fly ash is taken as a Substitute material for cement. In Thermal power plant due to ignition of coal minerals through pulverization an unintended powdered fly ash is originated. This powdered fly ash is generally inorganic in nature. The ignited ash of the coal accommodated with chemical compositions of iron, silica, calcium and alumina.

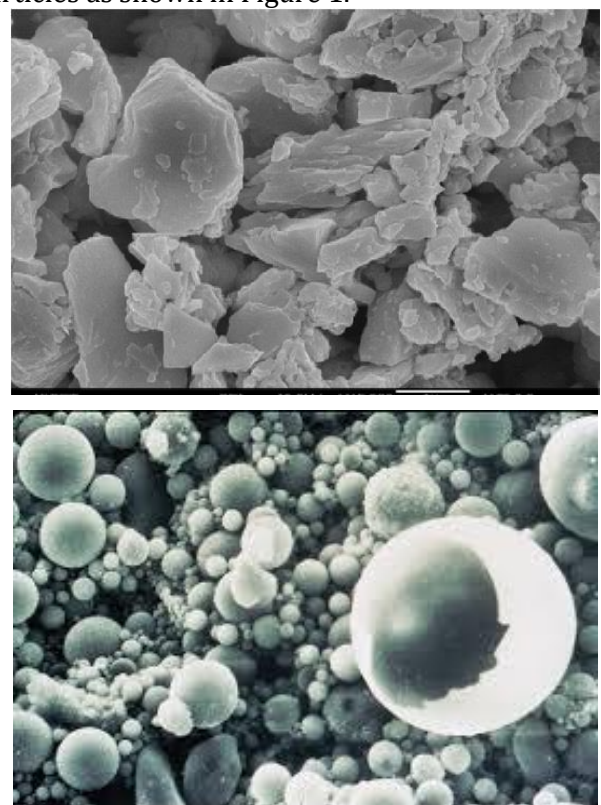
The various stages in Blast furnace ignition of coal, the structure transforms from crystalline nature to non-crystalline nature. The main non-crystalline minerals like mullite ( $3Al_2O_3 \cdot 2H_2O$ ), Quartz ( $SiO_2$ ), hematite ( $Fe_2O_3$ ), wustite ( $FeO$ ), orthoclase ( $K_2O \cdot Al_2O_3 \cdot 6SiO_2$ ) and Metallic Iron are formed along with combined silicates which naturally evolves in furnace by ignition of coal. In burnt fly ash 75% -96% of Aluminates and Silicates compositions are predominantly occur. On the calcium oxide percentage generally power plants are classified as Class-C (more than 12%) and Class-F (less than 10%). The available fly ash in our country belongs to Class- F. The fly ash that evolved from the ignition of coal furnace generally having crystal or non-crystal nature because of silicate mineral content. This fly ash forms hydrated lime when reacted with  $H_2O$  because its calcium content and also elaborate property of Pozzolonic.

Mullite and Quartz which evolved in crystalline stages in fly ash are non-reactive silicate and silica and are generally non-hydraulic. These mineral stages of Mullite and Quartz are the major components. In manufacturing of Fibre Cement Sheets, fly ash is prevailing because of its high pozzolan properties and crystalline structure.

The incombustible property of fly ash is predominant one for its wide usage. In earlier stages when coal is introduced in furnace it is grounded to a fine powder and then flurried into the boiler plant, then the Carbon (C) is swallowed, leaving the liquid materials which are potential in Calcium, Silica and Alumina. Now this liquid particles are very micro sized particles, crystalline and more volatile in nature, so they are to be collected before they tends to escape

from the plant and because of this nature it is named as Fly ash. The two common types of Class C and Class F fly ash types are classified by ASTM C618 (American Society for Testing and Materials) as Class-C if  $50\% < (SiO_2 + Al_2O_3 + Fe_2O_3) > 75\%$  and Class-F if  $(SiO_2 + Al_2O_3 + Fe_2O_3) > 75\%$ . The Class-C and Class-F fly ashes reacts with  $Ca(OH)_2$  which is emitted from the reaction of cement with  $H_2O$  and forms cement like fine powder called Calcium Silicate Hydrate.

In most of the construction projects Class-F fly ash is used. Due to ordinary temperature conditions heat produces while curing of concrete which results in a unique Cementations material in the mixes of High Strength and Mass Concrete also. So, the Class-F fly ash is a best suitable and recommendable Cementations material in summer conditions. For the past 7 decades the investigations on the performance of fly ash has been carried out and by its application results itself shows its implementation as substitute. At preliminary phase, Pozzolonic procedure is predominant. Most of Researchers involved for the development of the potential performance of fly ash and the hydration process of substitute materials with cement. Depending on the fly ash properties and their cognition it is seen that the particles Class-F fly ash includes morphology which is quite varying them from normal Pozzolonic particles as shown in Figure 1.



(a) Portland Cement

## (b) Fly Ash

Figure1 SEM micrographs (8,000×)

Fly ash has the ideal character of reducing water when compared with other substitute Pozzolonic materials. Both structure of hardened cement and Rheological properties are influenced initially by using fly ash.

The Structural and Surface properties are formed in the mixture due to morphology effect because of crystalline nature of the minerals which are in powdered form. The particle size distribution also occurs because of morphological effect. The three important phases like Filling, Lubricating and well distributing are carried in the concrete because of effect of using fly ash in cement as substitute material. These three phases of concrete depends on shape, size etc. This also impact on properties of concrete. The further advancements lie in the following features,

- 1) Assimilating the Fly ash in Concrete which is most commonly used design method deliberately enhances the total quantity of binder in concrete mix and eases the compaction.
- 2) During the process of hydration of cement heat produces and which can be prodigiously decreased by replacing cement with Fly ash upto certain quantity in concrete mix.

### 1-2 ORIGIN OF FLY ASH:

For the first time United States of America used Fly Ash as a replacing material of cement in the construction of Hoover Dam. Because of it is a bulk volume construction and also it seems to initiation of Exothermic heat due to hydration of Ordinary Portland Cement was predicted as an issue. There will be deleterious effect on Concrete strength because of heat produced in hydration of cement internally. It is proved experimentally that replacing Ordinary Portland Cement Content with fly ash in concrete mix would give same strength results but the internal heat developed due to hydration of cement can be greatly controlled. Hoover Dam takes 150years nearly to face a cool ambient temperature if Portland cement is replaced with fly ash for the preparation of concrete mix by using this assimilation technique.

The Detroit Edison Company and Cleveland Electric Illuminating Company carried out using fly ash in the production of concrete mix. In the year 1937 for the first time in the University of California a group of Associates along with Davis carried out preparation of concrete mix using fly ash. Besides a vast investigations

carried out to upto 1960s improve usage of fly ash in Construction companies, but a little milestones are achieved in both developed and developing countries. But in India under CBRI-Central Building Research Institute, Roorkee the first study on the using of fly ash in concrete preparation was carried out in the form of Australian and American Research work. While, the using of fly ash in smaller proportion has started in Hydraulic structures and Mass Concreting dams.

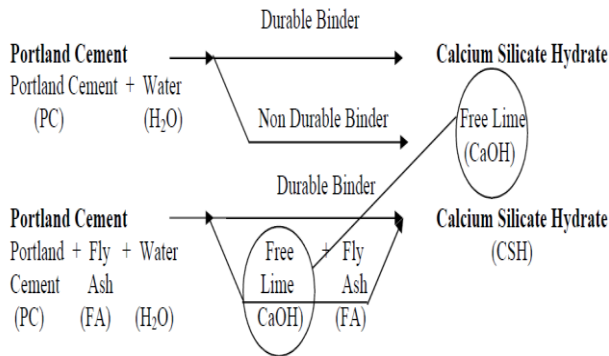
Cement is highly Energy intensive one in concrete rather than fly ash. By partial substitution of Portland cement with fly ash can vary the unit cost of concrete exceptionally and this can be done by implementing various admixtures like fly ash. As we know that the fly ash is a waste product of Thermal power plant and also one of the major pollutants of environment, it is unpreferable to dump fly ash which tends to severe environment devastation. To attain required strength and enhances durability the utilisation of fly ash besides dumping it is an advanced idea because of its beneficial features like low water requirement, high workability, appropriate reduction of bleeding and segregation effects.

In Civil Engineering Constructions besides of using many admixtures Portland cement concrete will remain as a major constituent in production of concrete mix. Cement Manufacturing requires huge amounts of calories of energy i.e., about  $7.36 \times 10^6$  kJ per tonne of cement proportion and also about 1 tonne of  $\text{CO}_2$  is emitted and liberated into the Atmosphere during manufacturing of a cement quantity of 1 tonne. Hence, the emission of  $\text{CO}_2$  can be significantly controlled by partial substitute of Portland Cement with By-products of mineral industries such as Fly ash, Slag and Silica Fume. To attain technical, ecological and economical aspects fly ash is introduced in concrete production. Fly ash is generally used as siliceous material in concrete to reduce water consumption and produces fine mix of concrete with low hydration.

As per ASTM(American Society for Testing and Materials) C125, is a Siliceous material and Aluminous material which is a non-Cementitious or a partial Cementitious valued one with a finely divided formed and also combines with  $\text{Ca}(\text{OH})_2$  in the presence of moisture to form a Cementitious compound at ambient temperature. Fly ash is basically used to improves the Strength and Workability and contribute to strength development and hence considered to be an effective ingredient of concrete. It also has been widely used as replacement of cement in both High Strength and normal concrete mix. The preliminary aim of using fly ash is due to its high fineness, which decreases the air

gaps (pores) in the concrete mix and improves the compressive strength.

The following equation shows the difference in reaction when fly ash is introduced.



The unstable state of Al<sub>2</sub>O<sub>3</sub> and SiO<sub>2</sub> in fly ash are made active using the product Ca(OH)<sub>2</sub> which liberated from the hydration of cement due to Pozzolanic effect of fly ash results in the formation of hydrated gel. The air gaps or pores present in the concrete are to be filled by this hydrated gel produced which results in the predominant increase in strength of concrete and also often leads to the generation of long-term strength to concrete. Dumping the waste mineral products of Thermal power plant to the environment can cause severe effects, so that the usage of waste material has been given special importance. The waste By-products are to be utilised to produce new products or used effectively as the natural admixtures for the environmental protection.

For concrete fly ash can be treated as a valuable admixture and it influences fresh and hardened concrete in many properties. The environmental pollution proportion that evolves through the Thermal power plant can be deliberately controlled by using this power plant waste as a substitute material for concrete in construction.

The permeable nature of Concrete is drastically declined by using Fly Ash because of the formation of hydrated gel (Calcium Silicate Hydrate) C-S-H. A partial replacement upto 20%-30% of fly ash to Ordinary Portland Cement would give preferably fair results in fresh state of concrete. Because of its fine, Spherical and smooth shape of fly ash particles the workability property improves in fresh state of concrete.

The spherical surfaces of fly ash balls tend to ease flow of concrete. To attain greater Compressive Strength the water-cement is lowered by its improved workability nature. Meanwhile, in hardened state the strength and durability of concrete increases gradually this is completely based on increase in the setting time of concrete. The harder C-S-H hydrated gel is formed

during the chemical reaction because of the Pozzolanic reaction separate the excess Ca(OH)<sub>2</sub>.

### 1-3 Fly Ash effects in concrete

Besides of some merits the Class-F fly ash usage have some effect when they are used in roller compacted concrete method:

1. The High Fly Ash Roller Compacted Concrete (HFRCC) has low strength at initial stages of compaction of concrete and decreases with raise in Fly ash content because of its Pozzolanic reaction.
2. The consistent development in the strength of Fly Ash Roller Compacted Concrete (HFRCC) are attained by activating more quantities of fly ash Following the curing age, greater amounts of FA.
3. By Super-Substitution method and by imparting Fly ash more content makes Fly Ash Roller Compacted Concrete (HFRCC) quick to compact, and then the crystalline state of Ca (OH)<sub>2</sub> and also permeable property reduction.
4. Fly Ash Roller Compacted Concrete (HFRCC) are homogeneous and normally very dense compounds. The flexural strength of the inner structure increases rapidly because of this very dense nature which is more important than the compressive strength to concrete.

### 1-4 NANO SILICA:

In the present days the micro-level does not provide enough insight into the building materials. Therefore, all around the world, the research is being diverted into the nano level, which is claimed to have tremendous potential for the future. The fundamental processes that govern the properties of concrete are affected by the performance of the material on a nano scale. The main hydration product of cement-based materials, the C-S-H gel, is a natural nano-structured material.

For the creation of huge materials a technology based on the usage of minute particles which are nano sized are used by manipulating them. It is important to check whether the particle size usually in the order of ≤100nm because the particle size i.e., nano (10<sup>-9</sup>) may affects the properties of materials.

The technology of using nano sized particles is not a present-day technology, as we know it exists few decades ago by the continuation of technologies along with science which are rapidly developing on analysis of nano sized, micro sized and other smaller particles as shown below,

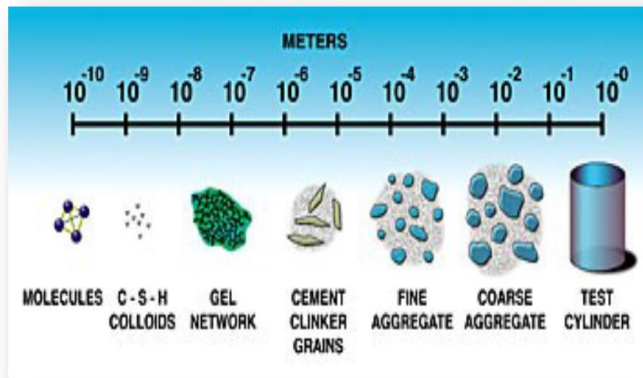


Fig.2 Particle Size variation

### 1-4-1 HISTORICAL BACKGROUND OF NANO SILICA:

Early in the 19<sup>th</sup> Century Richard Feynman confronts with the idea of using Nano-Silica and later in 1980s Dr. Eric Drexler, who had very deep investigation on Nano-Silica promotions in Civil Engineering through speeches and in books also.

### 1-5 Objectives of the Study

The present study of Cement replacement using Fly Ash and Nano-Silica (NS) has the following objectives:

- The variation in the strength properties of concrete like Flexural Strength, Tensile Strength, Compressive Strength and Modulus of Elasticity are carried out with Fly Ash (FA) application only.
- The variation in the strength properties of concrete like Flexural Strength, Tensile Strength, Compressive Strength and Modulus of Elasticity are carried out with combined application of Fly Ash (FA) and Nano-Silica (NS).
- The comparison of Controlled concrete and concrete with replaced cement with Fly Ash (FA) and Nano-Silica (NS) are represented graphically.

### 1-6 Scope of the Research Work

The Scope of the present study is

1. To carry out the preliminary tests on Cement, Fine Aggregates and Coarse Aggregates.
2. Mix design of M35 Grade concrete is done and proportioning of ingredients to concrete.
3. Binder formation (Cement + Fly Ash (FS)) ratio was considered as 0.45 water content.
4. The size cubes of 150 mm × 150 mm × 150 mm were casted and underwent curing for the

determination of the strength properties of concretes at 7, 28 and 56 Days of curing.

5. Fly Ash content of 20% and 30 % are used as the total Cementitious content.
6. Nano Silica dosages used are 2.0 %, 4.0% & 6.0% of the total Cementitious content.

### 1-7 Thesis Organization

This study consists of following chapters:

1. Chapter1: Mainly presents a brief introduction of the research work, Objectives and scope of the present study.
2. Chapter2: Presents a inclusion literature review on cement replacement and also strength development of concrete with using Nano-Silica (NS) and Fly Ash (FS) are reviewed. Partial information gathered on the effect of Nano-Silica (NS) is reviewed.
3. Chapter3: Presents the Properties of constituent materials and substitute materials used for concrete specimen.
4. Chapter4: The Mix Design of M35 Grade of concrete as per IS codal provisions.
5. Chapter5: Detailed presentation of Concrete specimen preparing, curing and testing is mentioned.
6. Chapter6: This chapter mainly deals with the experimental investigation reports on various strength properties of concrete.
7. Finally, Chapter 7 encapsulates conclusions drawn based on the investigations. Testimonials for further research to carry out are also presented.

### 3-1 GENERAL ASPECTS

In general concrete is widely used construction material which comprises of cement, Fine aggregates, coarse aggregates and water. Due to hydration of cement the stronger mass is formed with cement and water paste. The voids in the cement and water paste is filled by the both coarse and fine aggregates.

We know that the plastic nature of cement tends it to mould in any form easily. So, the moulded cement can be smoothened using a trowel. Major precautionary steps are to be followed to control the rapid loss in water content and also to avoid pores in concrete which results in decrement in strength. The two affects of Segregation and bleeding are controlled in concrete. The cement and water paste only defines the quality of the concrete specimen. The proportions which we use in mix design are also plays an important role in determining the characteristics of concrete. An air gaps retarding agent is

S.No	Physical property	Fine Aggregate Values
1	Specific Gravity	2.70
2	Fineness Modulus	2.8
3	Bulk Density (a) Loose State (a) Compacted State	16.75 kN/m <sup>3</sup> 17.15 kN/m <sup>3</sup>
4	Grading of Sand	Zone - II

to be mixed with this so that the pores in the concrete can be eradicated which results in density increment.

Due to the Tri-calcium Silicates present in the concrete may gradually increases the strength properties. Fine aggregates used to concrete preparation are advisably rough, angular and but now-a-days we are using only rounded grains. Because we are using stone which are angularly available which attains a density of 2,500 Kg/m<sup>3</sup>. A steel bar or Mesh are introduced in concrete because of its weaker strength characteristics in tension zone.

### 3-2 CEMENT

As per the specifications of code IS: 8112-1989 (ordinary Portland cement) of 43 grade is used for the present investigation. The cement utilized should be free of lumps and fresh and various investigations carried out should be as per Indian Standard Code specifications as shown in table-1

**Table 1:** Physical Properties of Cement

### 3-3 FINE AGGREGATES

Available sand from Local River confirming to IS: 383-1970 was used as fine aggregates in concrete preparation. The fine aggregates passing through 4.75mm IS sieve is utilized as shown in table-2 and sieve analysis is shown in table-3,

**Table 2:** Properties of Fine aggregate

### 3-6 FLY ASH

For the present investigation Fly Ash of "Class-F" obtained from the Thermal Power plant is used. The Fly Ash proportions of 20% and 30% by weight of cement are used. The Physical properties of Fly Ash are as shown in table-5

**Table 5:** Properties of Fly Ash

S.No.	Properties	Values
1	Silica (SiO <sub>2</sub> )	56.87 %
2	Aluminium trioxide (Al <sub>2</sub> O <sub>3</sub> )	27.65 %
3	Ferric oxide (Fe <sub>2</sub> O <sub>3</sub> + Fe <sub>3</sub> O <sub>4</sub> )	6.28 %
4	Titanium dioxide (TiO <sub>2</sub> )	0.31 %
5	Magnesium oxide (MgO)	0.34 %
6	Loss of ignition (LOI)	4.46 %
7	Specific gravity of Fly Ash	2.12



**Figure 5** Fly Ash Sample

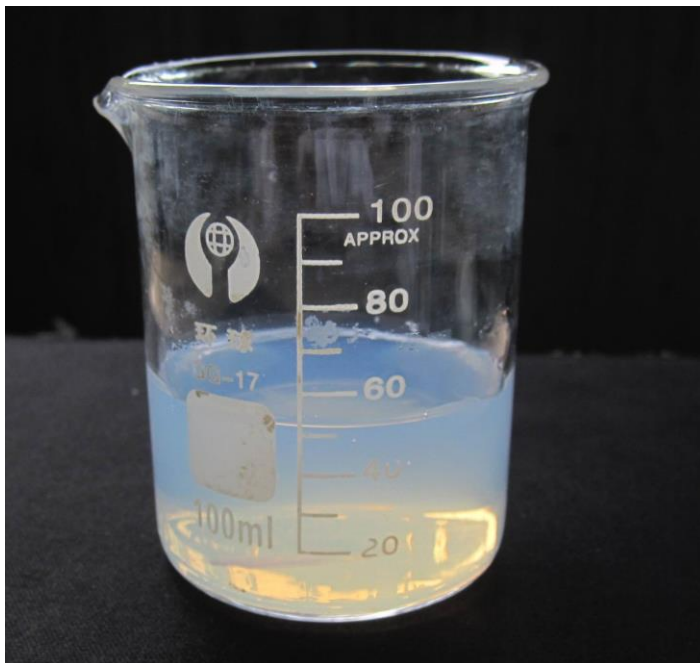
### 3-7 NANO-SILICA

Nano-Silica utilised in this investigation is a Pozzolanic colloidal silica emulsion. It is a better Pozzolanic material because of its high content of Amorphous Silica (>99%) and also their reduced spherical size of order 15 nano meters-50 nano meters.

In our present investigation we used the Nano-Silica contents as 2%, 4% and 6%. The properties of Nano-Silica is shown in table-6

**Table 6: Properties of Nano-Silica**

S.NO.	Properties	Actual results
1	Nano solids	39.5-41%
2	Ph	9-10.0
3	Specific Gravity of the sample	1.29-1.31
4	Sample Texture	White Liquid (Milky liquid)
5	Dispersion	Water



**Fig 6 Nano-silica sample**

#### 4. MIX DESIGN

##### 4-1 GENERAL ASPECTS

In this study the proportions of various concrete constituents elements required to form a concrete of required durability, strength and workability. It is design economically as high as possible. The two stages of Plastic and Hardened states of concrete with proportions of cement, Fine aggregates, coarse aggregate and water are calculated. At low workability state it is properly vibrated and compacted to optimum workability.

Based on Quality and Quantity of ingredients to form concrete are generally considered from the compressive strength of concrete and the proportions of water, aggregates of Fine [FA] and Coarse aggregates [CA] are attained. The manufactured cost of concrete is

based on the material cost, labour force and batching plant. It is preferable to change cost of concrete is done only by reducing the cement content.

The characteristic strength of concrete is related to the cost of concrete specimen. One of the main thing i.e., quality control maintained while mixing also influences the cost of concrete. The major cost of concrete is depends upon the size and shape of the aggregates. the workability is maintained to control cost of concrete mix which also depends on the compaction value.

##### 4-2 MIX DESIGN

###### Codal provisions and requirements of Mix design

The following are the steps to be followed while selecting the ingredients for mix design are:

- For structural provision the minimum Compressive Strength is to be considered.
- For optimum compaction the required workability is attained.
- To get optimum durability the W/C ration and cement quantity is found.
- The various factors that affect the concrete are to be identified and rectified.

The various factors affecting the mix design are:

###### (i) Compressive Strength:

The concrete main property i.e., compressive strength may affects the other factors of Mix design at hardened state. For nominal W/C ration the minimum or mean compressive strength at 28days of curing age is found. The degree of compaction is also of the factor that influences the strength of concrete. But as per Abraham's law of strength and water-cement ratios are inversely proportional.

###### (ii) Degree of Workability:

Size, Steel reinforcement and compaction techniques are the three factors on which the workability factor depends. The full compaction in case of very narrow sized reinforced section can be attached only to get workability to optimum. For the Embedded mild steel sections are also based on workability only and also depend on the method of compaction.

###### (iii) Durability of Concrete:

The main property of the concrete i.e., resistant to the aggressive environmental situations are rely on the durability property. Durability in case of low strength concrete is low and in case of High strength concrete of high durability. But in some cases of high strength is not only required but also exposure

condition is needed for more durability nature and also based on the W/C used.

**(iv) Nominal Size of Aggregates:**

The maximum size of aggregates is one of the important aspects on which the workability of concrete depends. It is investigated that the workability of concrete is increases gradually with the size of aggregates for smaller water-cement ratio.

The nominal provisions of aggregates are confirming to the codes of IS 456:2000 and IS 1343:1980 shows that the maximum sizes of aggregates are preferred.

**(v) Aggregate grading and type of aggregate:**

In some cases the workability and water-cement ratio of particular grading influences. For Lean mix of concrete the coarse aggregates are preferred than very lean mix is not advisable because of its finer material to make a specimen of concrete.

Aggregate selection also plays a vital role in the strength properties, workability and also water-cement ratio. By uniform grading only the mix design can be accurate for different sizes of aggregates.

**(vi) Controlled concrete:**

The variation in the test results are mainly depends upon the degree of control. Because of the proportions of mix ingredients, batching, curing, testing and mixing which varies the strength properties of concrete. The factor controlling this difference is termed as quality control.

**4-3 MIX DESIGN OF M35 GRADE OF CONCRETE**

**Table 7:** Proportioning of M35 grade concrete mix

Type of Cement	Ordinary Portland Cement 43 Grade
Maximum Nominal size of Aggregate	20 mm
Minimum content of Cement	340 kg/m <sup>3</sup>
Maximum Water Cement ratio	0.45
Specific Gravity of Cement	3.15
Specific Gravity of Fine aggregate	2.70
Specific Gravity of Coarse aggregate	2.65

**Target Mean Strength**

$$f_{ck}' = f_{ck} + 1.65s$$

$$= 35 + 1.65 \times 5$$

$$= 43.25\text{MPa}$$

**Calculations of cement content**

Water Cement Ratio : 0.45  
 Water Content :  $0.45 \times 340$   
 : 153 Litres

Volume of Coarse Aggregate = 0.63 (for Zone II Table No.3 IS 10262 – 2009)  
 Volume of Fine Aggregate =  $1 - 0.63 = 0.37$

**Mix Calculations:**

➤ Volume of Concrete = 1 m<sup>3</sup>  
 ➤ Volume of Cement =  
 Mass of Cement × 1

Specific Gravity of Cement × 1000  
 = (340 / 3.15) × (1/1000) = 0.1079m<sup>3</sup>

➤ Volume of Water =  
 Mass of Water × 1  
 Sp. gravity of Water × 1000  
 = (153 / 1.0) × (1/1000) = 0.153 m<sup>3</sup>

➤ Volume of All in Aggregates =  
 $1 - [0.1079 + 0.153]$   
 = 0.7391 m<sup>3</sup>

➤ Mass of Coarse Aggregate =  
 $0.7391 \times 0.63 \times 2.65 \times 1000$   
 = 1234.00kg

➤ Mass of Fine Aggregate =  
 $0.7391 \times 0.37 \times 2.70 \times 1000$   
 = 738.00kg

Mix proportion: 1 : 2.17 : 3.62



## 5. EXPERIMENTAL INVESTIGATION

### 5-1 GENERAL ASPECTS

Our present study mainly discuss about the various strength properties like Compressive Strength, Tensile Strength, Flexural Strength and Modulus of Elasticity for M35 Grade of Concrete with partial replacement of cement by using Nano-Silica (NS) and Fly Ash (FA). The proportions suggested for the present investigation are Nano-Silica with 2.0%, 4.0% and 6.0% and Fly Ash 20% and 30% for making concrete specimens by weight of cement.

### 5-2 PREPARATION OF DESIGN MIX

The mix design of concrete mainly depends upon the properties of materials used for mix design. In the first step the Fly Ash and cement are mixed thoroughly and make a fine powder and then water and Nano-Silica are added with similar proportion. The two proportions are mixed uniformly and then the colour is maintained simultaneously to get required consistency and ready for casting. By the codal provisions of IS 1199:1959 the tests are to be carried i.e., Slump cone test and compaction factor test.

### 5-3 TEST SPECIMENS

The concrete specimens are,

- a) Cubes- 150mm x 150mm x 150mm
- b) Cylinders- diameter (150mm) and height (300mm)
- c) Prisms – 100mm x 100mm x 500mm.

The concrete specimens are tested at different curing periods (3, 7, 28 and 56days). After the curing of specimens they are tested for various mechanical strength tests at 28 days. As per the specifications of IS516:1959 the loading rate is to be carried.

### 5-3 CURING PROCEDURE

The concrete specimens after casting they are kept aside for 24 hours and then the specimens are removed from mould at optimum temperature. A detailed marking is to be done on specimen to identify the specimen. After this the specimens are placed in water to keep moisture content in control. After the successful completion of curing the specimens are make ready to test for curing periods of 3, 7, 28 and 56 days of age.

### 5-4 TESTS ON NANO-SILICA (NS) AND FLY ASH (FA) CONCRETE

#### 5-4-1 COMPRESSION STRENGTH TEST

The strength property test in which the very important test is compressive strength of cube or cylinder specimens are ease to performed and also relates it to the controlled concrete confirming to the IS: 516-1959 and these specimens are underwent compression test by using CTM machine as shown below:



#### 5.4.1 Compression Strength Testing Machine

The casted Concrete cubes of size 150mm x 150mm x 150mm were prepared for the CTM machine test and it is to be done at rate of 140kgs/Sq.cm/minutes until the cracking occurs or failure occurs and it is to be done at 7, 28 and 56 days of curing period.

#### 5-4-2 SPLIT TENSILE STRENGTH TEST

At 28days of curing age the concrete specimens are prepared for Split Tensile Strength by using codal provisions of IS 5816-1999 and its specifications. The test carried on cylinder specimens of 300mm height and 150mm diameter. The load on the sample is carried out until the specimen fails with gradually applied load. The extreme load that is applied on the specimen is noted down. The splitting tensile strength ( $F_t$ ) is given by the relation,

Where, P  
cylinder  
cylinder

$F_t$	=	$2P/\pi DL$
	=	Compressive load
L	=	Length of the
D	=	Diameter of the



5.4.2 Split Tensile Testing Machine

**5-4-3 BENDING STRENGTH OR FLEXURAL STRENGTH TEST**

The Tensile strength of concrete is related to the Flexural. The bending strength is the resulted in the resistance incurred by the concrete specimen without reinforcement. STM (Standard Test Method) is the method which is generally preferred to investigate the flexural strength of concrete. The flexural strength test is carried by using three beams of 100x100x500mm for three point load test in which crack may seen at any section

Bending Strength or Flexural strength is calculated by the relation,  
When crack started in the tension surface (i.e., the bottom surface) within the middle third of the beam,

$$MR = \frac{Pl}{bd^2}$$

Where, P- is the failure load,  
l- is the span length,  
d- is the depth of the beam, and  
b- is the width of the beam. All dimensions are in mm.

(b) If fracture initiates in the tension surface (i.e., the bottom surface) outside the middle third of the beam by not more than 5% of the span length.

$$MR = \frac{3Pa}{bd^2}$$

Where, P- is the failure load,  
l- is the span length,  
d- is the depth of the beam, and  
b- is the width of the beam. All dimensions are in mm.



5.4.3 Experimental Setup for Flexure Test

**5-4-4 MODULUS OF ELASTICITY TEST**

To get Modulus of Elasticity of cylinder specimen of 150mm diameter and 300mm long are by using compression Testing machine with dial gauge. This test mainly contains of two steel ring type arrangements which are used for clamp the specimen, gauge bars, dial gauge and a lever unit of spherical shape. The upper and lower rings are fitted by clamping the specimen. Then load applied gradual manner on the specimen and simultaneously readings are noted for increasing load values. By the load results the value of strain is noted by using gauge length and dial gauge. By this test the Modulus of Elasticity of concrete is plotted by using Stress-Strain curve.

## 6. RESULTS AND DISCUSSIONS

### 6-1 GENERAL ASPECTS

For M35 Grade of Concrete with partial replacement of cement by using Nano-Silica (NS) and Fly Ash the standard tests were conducted on hardened concrete specimens to obtain the compressive strength, flexural strength, split tensile strength and modulus of elasticity.

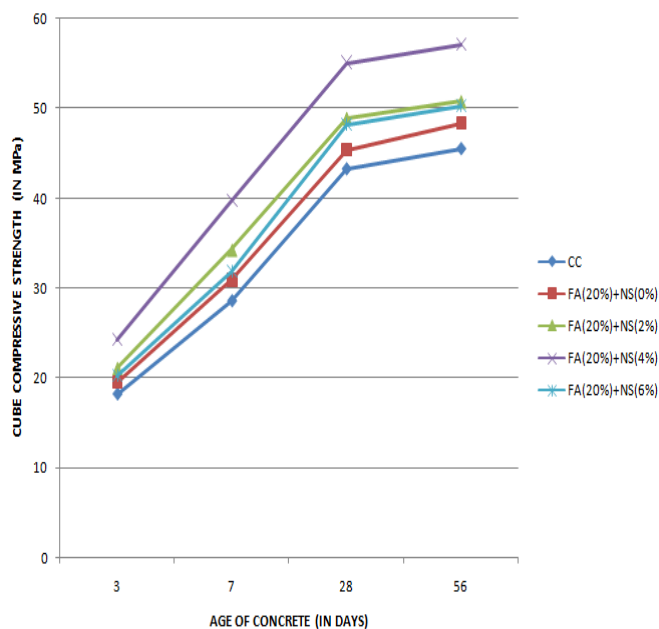
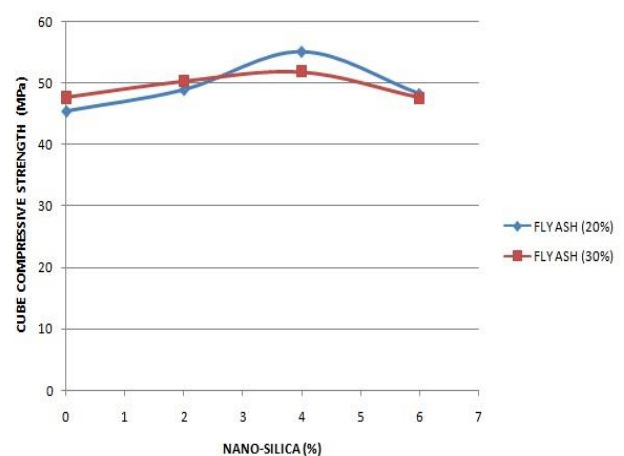
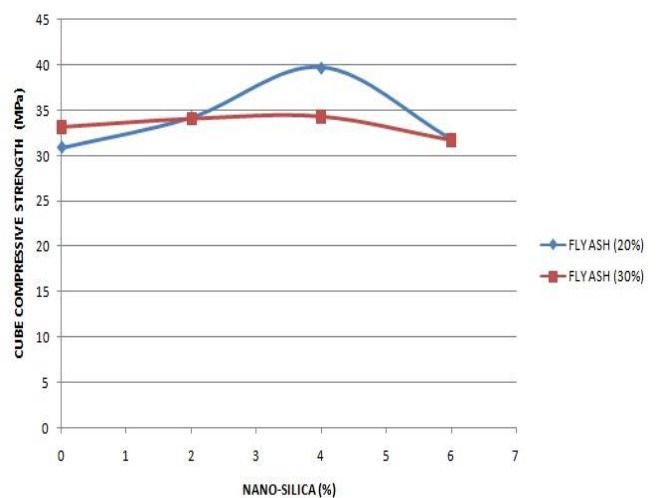
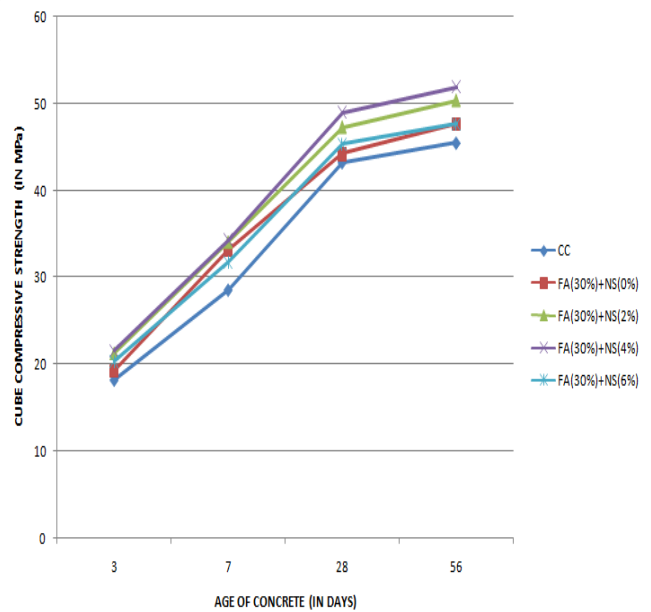
### 6-2 RESULTS AND DISCUSSION

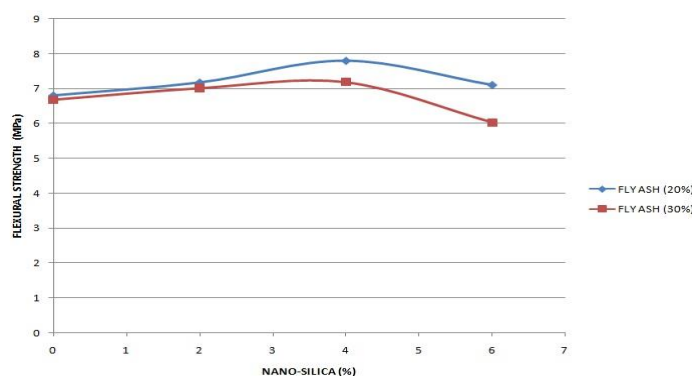
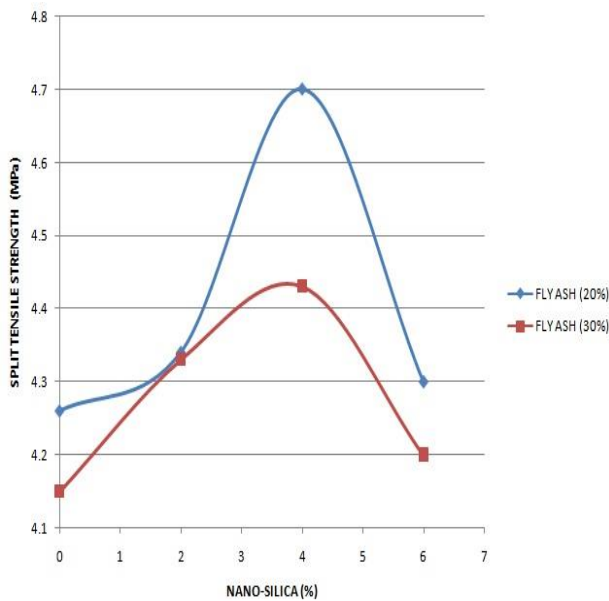
The investigation results for various standard tests on concrete specimen i.e., Compressive Strength, Flexural Strength, Split Tensile Strength and Modulus of Elasticity are compared with Controlled concrete as mentioned below:

#### 6-2-1 COMPRESSIVE STRENGTH

By the combined application of Fly Ash and Nano-Silica the compressive strength of cube specimens varies with Age of concrete in days as shown in fig-6 and the strength attained is the average of three test results.

It is noticed that the compressive strength attained by the combined application exhibits more than that of Controlled concrete as shown in table 7





## 7. CONCLUSION AND SCOPE OF FUTURE WORK

### 7-1 CONCLUSION

- From the investigation results i.e., a partial replacement of cement with Fly Ash and Nano-Silica it is studied that various strength properties of concrete mix increases upto 4% application of Nano-Silica content and decreases with further increment.
- It is quite enthusiastic observation that the changes occurred in the strength properties like compressive strength, tensile strength and flexural strength with change in cement proportion.
- Due to the presence of additional binder which is formed by the combination of Fly ash and Nano-Silica with Calcium hydroxide substantially increases the strength properties of concrete.
- Because of additional binder formed in concrete due to the Pozzolanic additives tends

to form a paste-aggregate bond which leads to increment in the strength properties of concrete.

- The partial replacement of Fly ash and Nano-Silica tends to give maximum increment in strength properties at Fly ash content 20% and Nano-Silica content 4%.
- But the decrement in the strength properties with increase in Nano-Silica content is due to the formation of poor quality binder.

### 7-2 SCOPE OF FUTURE WORK:

The influence of Fly Ash (FA) and Nano-Silica (NS) are investigated on strength properties of concrete and also durability. This study also helps further to investigate the Resistance impact on concrete using Fly Ash (FA) and Nano-Silica (NS).

## REFERENCES

- [1] Belkowitz, J. and Armentrout, D. L. (2009). The Investigation of Nano Silica in the Cement Hydration Process. ACI Special Publication 267(8): 87-100
- [2] Thomas et al., (1999), "Reported that fly ash reduced concrete strength at early ages, but significantly enhanced strength at later ages". Cement and Concrete Research, Vol 29(4), pp.487-495.
- [3] Sanchez. F., and Sobolev, K. (2010). "Nano-Technology in Concrete – A Review", Construction and Building Materials. 24, 2060-2071.
- [4] Gengying Li., (2004). "Properties of High-Volume Fly Ash Concrete incorporating Nano-SiO<sub>2</sub>", Cement and Concrete Research, pp. 1043-1049.
- [5] Jagadesh.Sunku (2006), "had studied the advantages of use of fly ash as Supplementary Cementing Materials in Fibre cement sheets. International Inorganic Bonded Fibre Composites Conference, pp.25-32.
- [6] G.Quercia and H.I.H. Browwers, (2010). 'Applications of Nano Silica in Concrete Mixtures', 8th Ph.D. Symposium in Kgs Lyngby, Denmark, June 20-23,
- [7] C Freeda Christy and D Tensing, (2010). "Effect of Class F Fly Ash as Partial Replacement with cement" IJEMS, Vol 17 pp 140 – 144
- [8] D.P. Bentz et al, (2010), "studied the evaluation of sustainable high volume fly ash concretes, Cement and Concrete Composites, Vol 33, pp 39-45.
- [9] G.Carette et.al. (2010), " studied on the early age strength development of concrete incorporating fly ash". Materials, Vol 90(6), pp.535-544.
- [10] Kazim Turk et.al.(2012), " studied the effect of fly ash and silica fume on Compressive Strength".

Construction and Building Materials, Vol 37, pp.326-334.

- [11] IS: 10262-2009. Concrete Mix Proportioning – Guidelines (First Revision). Bureau of Indian Standards, New Delhi.
- [12] IS 516:1959. “Methods of Tests for Strength of Concrete”. Bureau of Indian Standards, New Delhi, India.
- [13] IS: 8112:1989. “43 Grade Ordinary Portland Cement – Specifications”. Bureau of Indian Standards, New Delhi.
- [14] IS: 383:1970 (Reaffirmed 1997) Specification for Coarse and Fine Aggregates from Natural Sources for Concrete. Bureau of Indian Standards, New Delhi.