

# Serial & Circular Peer Harvesting by Wireless Powered Communication Network

Vinod V. Lonkar<sup>1</sup>, Jitendra Kumar Mishra<sup>2</sup>

<sup>1</sup> P.G Student, DC dept., Patel Institute of Engineering & Science, Bhopal., India

<sup>2</sup> Assistant professor, H.O.D., ECE dept., Patel Institute of Engineering & Science, Bhopal., India

\*\*\*

**Abstract** - Energy harvest is a vital facet of inexperienced communication that has self-sustainable operation of wireless communications systems and networks. Wireless powered communication networking (WPCN) may want to be a new networking paradigm at any place the battery of wireless communication devices will be remotely replenished via the use of microwave wireless power transfer (WPT) technology. In this paper, we tend to perform the network and K wireless nodes. The wireless nodes have energy harvesting skills and may harvest power from hybrid access point (H-AP) and alternative nodes in numerous allotted time slots We recommend two new schemes serial energy harvesting (SEH) & circular energy harvesting (CEH) for the WPC that perform powered harvesting among peer nodes. In the first scheme, each node harvests power from peer nodes transmitting in the preceding time slots, at the same time as each wireless node harvests power from all nodes in the second scheme. Heuristic recursive optimization algorithm used to search optimum solutions of two optimizations based on different working modes. The network has reasonable energy gain with the aid of SEH with fewer process quality. Otherwise, the network offers extra possible output performance, as quickly as it adopts CEH scheme.

**Key Words:** Wireless powered communication network (WPCN), Circular energy harvesting (CHE), Serial energy harvesting (SHE), Wireless Energy harvest (WEH), Heuristic Algorithm.

## 1. INTRODUCTION

Wireless powered Communication Networks (WPCN) is one amongst the promising approaches to increase the life of the energy-constrained wireless networks like Wireless sensor Networks (WSNs). With the advancement in energy harvest in terms of Wireless Energy Transmission (WET), WPCN overcomes the matter of replacing fixed energy sources like batteries in tough access areas of business networks. Wireless energy harvesting (WEH) is turning into one among the key techniques in energy harvesting in wireless networks. On the opposite hand, interference alignment (IA) could be a promising resolution for interference management in wireless networks studied in [10]. The idea of wireless power transmission offers larger possibilities for transmission power with negligible losses. For the long range power transmission power will be sent

from source to receivers outright without wires, reducing the price. Batteries got to be recharge or modified eventually, thus the requirement for this type of work is projected in [14]. A similar wireless communication network consisting of dual-hop wireless high-powered communication network (DH-WPCN), wherever the communication between a Hybrid Access point (HAP) and variety of users is assisted by energy-constrained relays who have to be compelled to harvest energy from radio frequency signals broadcast by the HAP [25].

## 2. RELATED WORK

A related system model was considered in [5] and [8]. H. Ju and R. Zhang Presented an EH network model which a set of users can harvest energy in downlink and transmit information in uplink. X. Kang, C. Ho and S. Sun investigated the difference is that a dual function H-AP is assumed to be equipped with two antennas to perform downlink energy transfer and uplink communication, respectively. Comparatively speaking, the optimum time allocation between energy harvesting and information transmission is complex. In this system model, there are one H-AP, one relay and one source. A time switching cooperative communication scheme is studied to achieve downlink wireless energy transfer and uplink wireless information transmission. In all of these works, the wireless nodes only harvest energy from the H-AP. Chin Keong ho and Rui Zhang take into account the use of energy harvesters, in situ of typical batteries with fixed energy storage, for point-to-point wireless communications. additionally to the challenge of transmission in a channel with time selective fading, additionally take into account the matter of energy allocation over a finite horizon, taking into consideration channel conditions and energy sources that are time varied, thus on maximize the throughput [2]. Furthermore, wireless power transfer was investigated supported relay networks, formulated the offline end-to-end turnout maximization drawback with energy transfer from the source to the relay subject to energy causality at each nodes and information causality at the relay node and K. Huang showed that it's a convex optimization drawback [3]. Liang Liu, Rui Zhang, and Kee-Chaing Chua assume that the transmitter encompasses a fixed power supply, whereas the receiver has no fixed power supplies and therefore must fill again energy via WEH from the received interference and signal sent by the transmitter [4] New sort

of wireless RF powered communication network with a harvest then-transmit protocol, wherever the H-AP first broadcasts wireless energy to distributed users within the downlink and so the users transmit their independent data to the H-AP within the uplink by TDMA. H. Ju & R. Zhang propose a new common throughput maximization approach to allocate equal rates to all users in spite of their distances from the H-AP by allocating the transmission time to users inversely proportional to their distances to the H-AP [5]. Optimum time and energy allocation to maximize the sum throughput for the case once the nodes will save energy for later blocks. To maximize the sum throughput over a finite horizon, the initial optimization problem is separated into 2 sub-problems and finally are often formulated into a standard box constrained optimization problem, which might be resolved efficiently by Rui Wang and D. Richard Brown [6]. The Performance Analysis and optimization in WPC system, wherever associate energy forced supply, powered by an obsessive power beacon (PB), communicates with a destination. It's assumed that the lead is capable of playing channel estimation, digital beam forming, and spectrum sensing as a communication device [9]-[12]. Especially, considers a wireless powered communication network (WPCN) wherever user first harvest energy in downlink then utilize the energy to transmit information signal in uplink at the same time. Xin Lin, Lei Huang goal is to maximize the energy efficiency (EE) of the network via joint time allocation and power control [16]. Full duplex wireless-powered two approach communication networks, wherever two hybrid access points (HAPs) and variety of amplify and forward relays each operate in full duplex situation. Gaojie Chen, pei Xiao use time switching (TS) and static power splitting (SPS) schemes with two approach full duplex wireless-powered networks as a benchmark studied in [23]. Parisa Ramezani, and Abbas Jamalipour study of dual-hop wireless powered communication network (DH-WPCN), wherever the communication between a Hybrid Access purpose (HAP) and variety of users is power-assisted by energy-constrained relays who ought to harvest energy from radio frequency signals broadcast by the HAP. So as to power the relays for helping the uplink communication, the HAP broadcasts an obsessive energy signal within the downlink. Every relay harvests energy from this signal and utilizes the harvested energy in forwarding its corresponding user's information to the HAP [25].

### 3. PROPOSED SYSTEM

This paper proposed serial & circular effective peer harvesting methods are used to improve the gain of WPC system. Specifically, in SEH, the  $k$  th node harvests energy serially from the H-AP and previous  $k-1$  transmitting nodes and goes to sleep after data transmission. For the CEH, each node can harvest energy from the H-AP and other nodes when it doesn't transmit information. They are appropriate to unique situations. That is, the network

has slight energy advantage with the aid of SEH with fewer computational complexity. Otherwise, the network can provide better attainable throughput performance, while it adopts CEH scheme. This paper proposes a heuristic recursive optimization algorithm using particle swarm optimization (PSO) to search most desirable options of two optimizations primarily based on different working modes. The proposed recursive optimization method can effectively resolve the optimization problems, regardless of the complexity of goal functions. Put another way, it has better adaptability technically to solve some objective functions that are complex multidimensional problems. As a result, it doesn't need too many extra works to simplify the objective function to fit the needs of solving process. Otherwise, it will occupy extra time on expression derivation instead of optimization. Relatively speaking, the proposed strategies can supply an increased simple way if any one honestly desires to fulfill a technical requirement.

By using new concept of peer harvesting challenges added as follow.

The peer harvesting have now not been studied inside the literature, even though it is straightforward that harvesting electricity from other devices except the HAP will enhance the performance. But, the implementation and the analysis of such system are greater hard because of the coupling among all nodes to optimize the time of EH and transmission. Accordingly, at each node we want to analyze the greater harvested power.

Two optimization problems want to be formulated for practical designs. Since the optimization is more complicated than the prevailing works besides peer harvesting and the objective functions of proposed schemes are difficult, we must use viable and occasional complexity approach to obtain the optimization manner.

This system contribute the two new peer harvesting schemes, the system of two applicable optimizations and their solutions by using of heuristic optimization algorithm, which has better technical adaptability for fixing complex objective features. In WPC networks Simulation consequences display the effectiveness of the proposed schemes.

4. SYSTEM MODEL

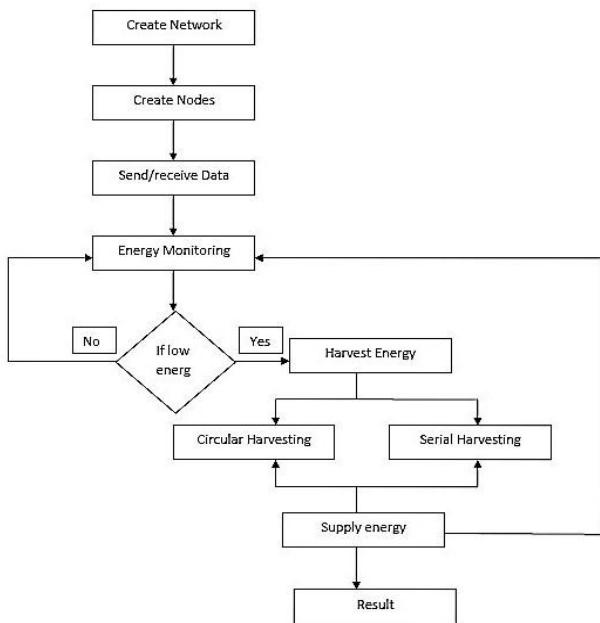


Fig 1:-WPC Network Model

Consider a wireless powered communication network with one H-AP (node 0) and K wireless nodes (nodes 1... K). Assume that all nodes are outfitted with a single antenna. In addition, anticipate that the H-AP has a constant energy and that the K nodes do not have any embedded energy supply. In the first time slot, the H-AP transfers the preliminary energy to all the wireless nodes in the down link for  $t_0T$  seconds, the place T is the total duration of communication and  $0 < t_0 < 1$ . In the second time slot, node 1 transmits data to the H-AP for  $t_1T$  seconds, observed by using node 2 for  $t_2T$  seconds, until node K for  $t_K T$  seconds. One has  $t_0 + t_1 + \dots + t_K = 1$ .

WPC network model is shown in Fig.1, first we have to create some network by using nodes which transmit and receive data from each other, and this data is given to energy monitoring system. If energy level is more then it again given to energy monitoring otherwise is diverted towards the energy harvester, it adopts two working schemes.

In SEH, the kth node only harvests energy from the 1st, 2nd, ..., (k - 1)<sup>th</sup> nodes that have transmitted before it, and then goes to sleep after its own transmission. The timing diagram of SHE for energy harvesting and information transmission is shown in Fig. 2.

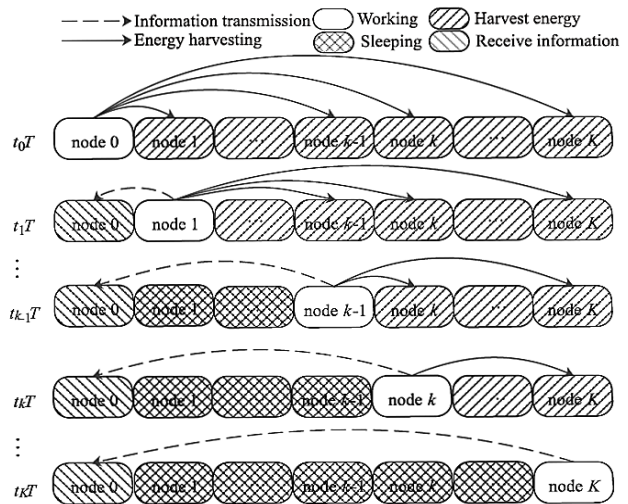


Fig 2. The timing diagram of SHE.

In CEH scheme, the timing diagram of energy harvesting and information transmission is shown in Fig. 3. In CEH, the k<sup>th</sup> node not only harvests energy from the previous k - 1 nodes that have transmitted information before it, but also harvests energy from the following K-k nodes that will transmit after it. In other words, the k<sup>th</sup> node does not go to sleep after its own data transmission but keeps harvesting energy from others. Therefore, its optimization and derivation are more mathematically involved. Assume that all nodes exhaust the harvested energy for transmitting information and do not consider energy storage and power allocation for future transmission

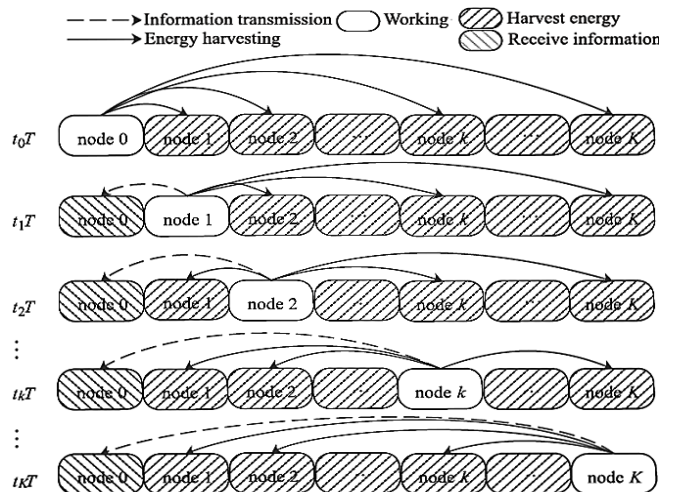


Fig 3. The timing diagram of CEH.

Assume that the H-AP assigns the random transmission order and initial time slots through the control channel, and the WPC system abides through the TDMA protocol. This means that the nodes can transmit signals within the assigned time slot and then harvest energy or fall asleep in their idle time slots. Because each time slot simply exists one user node to transmit data, other nodes can estimate



their CSI between themselves and working node, respectively. Finally, H-AP achieves optimization and schedule based on nodes' remarks information.

### 5. RESUL DETAILS

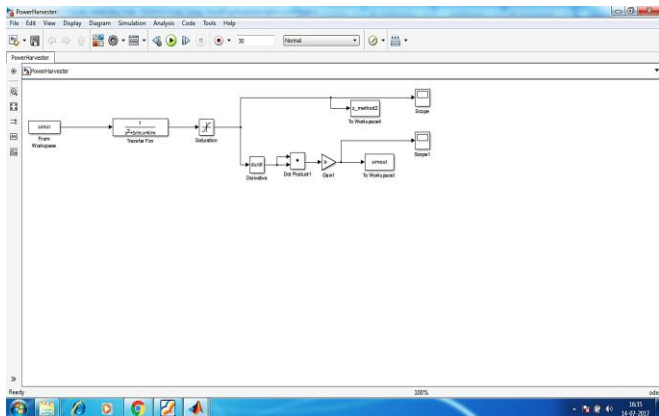


Fig 4:-Power Harvesting

Fig 4 shows the simulation result of power harvesting

**SIMIN:** It load signal data from workspace block reads signal data from a workspace and outputs the data as a signal. We can specify how the data is loaded, including sample time, how to handle data for missing data points, and whether to use zero-crossing detection. In the Data parameter Workspace block, specify the workspace data to load. That evaluate a structure of MATLAB time series objects, a structure, with or without time and two-dimensional matrix.

**TRANSFER FCN:** A transfer function also known as system function or network function and, mathematical representation in the form of graph, transfer curve or to describe inputs and outputs of black box models. Typically it is a representation in terms of spatial or temporal frequency, of the relation between the input and output of a linear time-invariant (LTI) system with zero initial conditions and zero point equilibrium.

**SATURATION:** A Saturation block accepts and outputs real signals of any data .it also imposes upper and lower bounds on a signal. When the input signal is within the range specified by the Lower limit and Upper limit parameters, the input signal passes through unchanged. The upper bound on the input signal. While the signal is above this value, the block output is set to this value. When the input signal is outside these bounds, the signal is clipped to the upper or lower bound. When the parameters are set to the same value, the block outputs that value.

**DOT PRODUCT:** The Dot Product block generates the dot product of the vectors at its inputs. The scalar output, y, is equal to the MATLAB operation.  $y = \text{sum}(\text{conj}(u1).* u2)$

.where u1 and u2 represent the vectors at the block's top and bottom inputs, respectively. If u1 and u2 are both column vectors, the block outputs the equivalent of the MATLAB expression  $u1'*u2$ .

**SIMOUT:** This function from Workspace block inputs a signal and writes the signal data to a workspace. During the simulation, the block writes data to an internal buffer. When the simulation is completed or paused, that data is written to the workspace. Data is not available until the simulation is stopped or paused.

**SCOPE:** It generated Display signals during simulation. The Simulink Scope block displays time domain signals with respect to simulation time. Input signal characteristics are 1. It generate Signal Continuous (sample-based) or discrete (sample-based and frame-based). 2 Signal data type - Any data type that Simulink supports including real, complex, fixed-point, and enumerated data types 3 Signal dimension-Scalar, one-dimensional (vector), two dimensional (matrix), or multidimensional. Display multiple channels within one signal depending on the dimension.

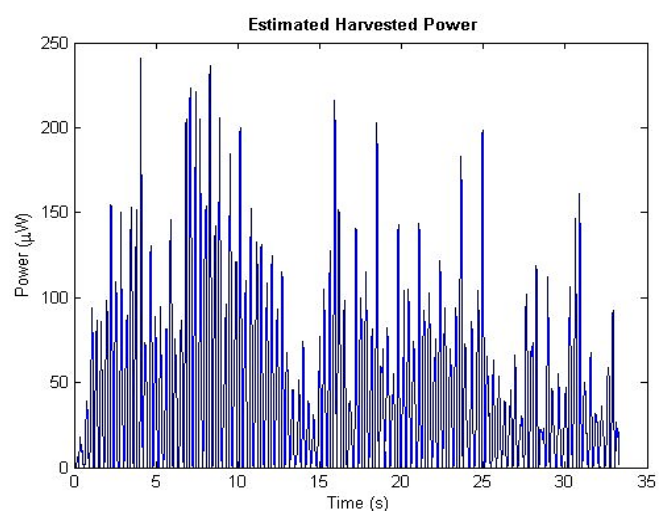


Fig 5:-Result of Estimated Harvested Power

Fig 5 shows estimated harvested power based on the power and time basis

Time(s)	Estimated Power(µW)
5	94.71
10	200.2
15	105.3
20	142.6
25	198.5
30	46.72
34	92.75

Table 1. shows estimated harvested power based on the power and time basis.

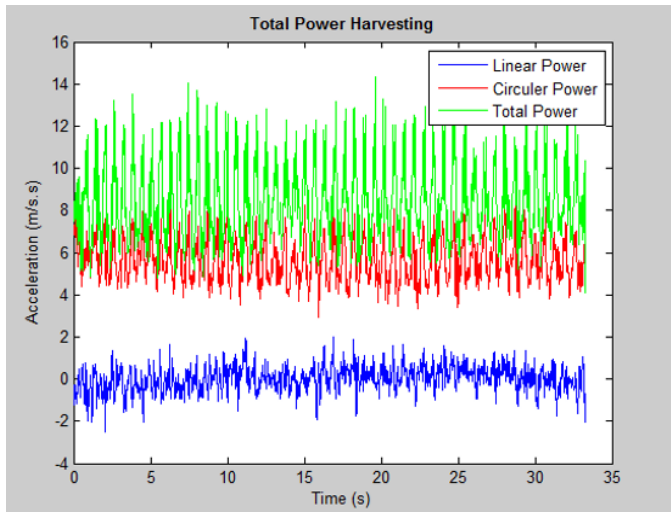


Fig 6:-Result of Accelerometer Measurement

Fig 6 shows accelerometer measurement of the time and acceleration basis.

Time	Total Power	Circular Power	Serial Power
5	11.61	8.008	0.9586
10	12.72	7.855	1.303
15	12.03	8.392	0.4604
20	13.3	7.625	0.7287
25	13.1	6.476	1.035
30	12.03	6.898	0.9969
34	10.42	6.361	1.035

Table 2. Shows Total Power, Circular Power, Serial Power.

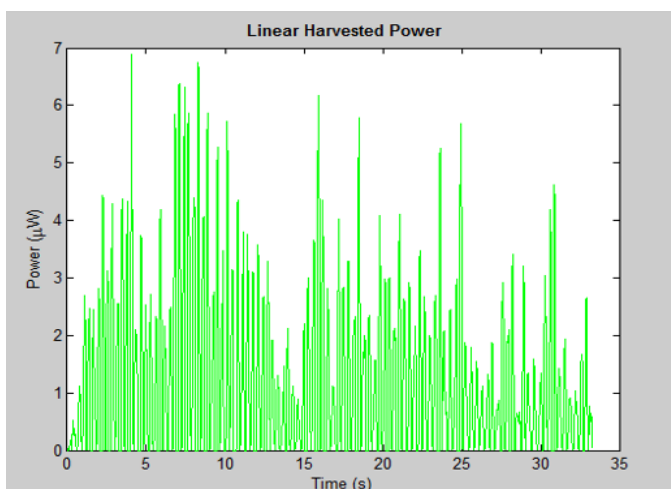


Fig 7: Serial Power with Time.

Time	Serial Power
5	2.705
10	5.721
15	2.198
20	4.076

25	5.672
30	1.34
34	2.65

Table 3. Shows Serial Power harvested with Time.

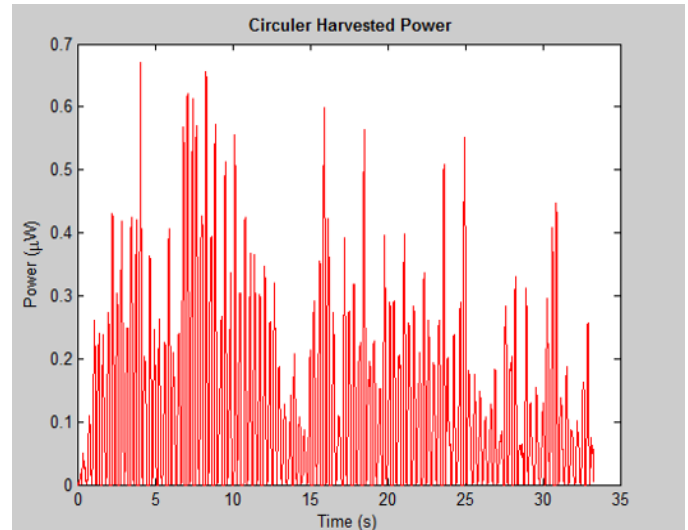


Fig 7: circular Power with Time.

Time	Circular Power
5	0.2457
10	0.5562
15	0.2137
20	0.3962
25	0.5515
30	0.1303
34	0.2576

Table 4. Shows Circular Power harvested with Time.

The simulated result of power harvesting shown in fig-4.the basic blocks in MATLAB will explain as above .The fig. 5 shows the result of estimated harvested power in the form of graph shows estimated harvested power based on the power and time basis and Fig. 6 shows accelerometer measurement of the time and acceleration basis.fig.7 & fig 8. Shows the serial & circular harvested power respectively.

## 6. CONCLUSION & FEATURE SCOPE

To optimize sum possible throughput and required harvested energy this paper has proposed two energy harvesting schemes, SHE & CHE totally based on heuristic algorithms with similar performance. The proposed recursive optimization technique can correctly clear up the optimization issues. Which has better technical adaptability for fixing complex objective features. CEH is better than SHE, to achieve the maximum sum achievable throughput.

In feature work many challenges to be tackled like power control can be used to enhance its overall performance similarly, the tradeoff between most beneficial transmission order and implementation complexity must be investigated. Simulation results exhibit the effectiveness of the proposed schemes in WPC networks.

## REFERENCES

- [1]. B. Gurakan, O. Ozel, J. Yang, and S. Ulukus, "Energy cooperation in energy harvesting wireless communications," in Proc. IEEE Inter. Symp. Inform. Theory, Cambridge, MA, USA, July 2012.
- [2]. Chin Keong Ho, and Rui Zhang, "Optimal Energy Allocation for Wireless Communications with Energy Harvesting Constraints," arXiv: 1103.5290v2 [cs.IT] 9 May 2012.
- [3]. K. Huang and E. Larsson, "Simultaneous Information and Power Transfer for Broadband Wireless Systems," in IEEE Trans. Signal Process., vol. 61, no. 23, pp. 5972-5986, December 2013.
- [4]. Liang Liu, Rui Zhang, and Kee-Chaing Chua, "Wireless Information Transfer with Opportunistic Energy Harvesting," IEEE transactions on wireless communications, vol. 12, no. 1, January 2013.
- [5]. H. Ju and R. Zhang, "Throughput maximization in wireless powered communication networks," IEEE Trans. Wireless Commun. vol. 13, no. 1, pp. 418-428, Jan. 2014.
- [6]. Rui Wang and D. Richard Brown, "Throughput Maximization in Wireless Powered Communication Networks with Energy Saving," DOI: 10.1109 / ACSSC. 2014. 7094498, 27 April 2015.
- [7]. H. Ju and R. Zhang, "User cooperation in wireless powered communication networks," 2014 IEEE Global Communications Conference, Austin, TX, 2014, pp. 1430-1435.
- [8]. X. Kang, C. Ho and S. Sun, "Full-Duplex Wireless-Powered Communication Network With Energy Causality," IEEE Trans. Wireless Commun., vol. 14, no. 10, pp. 5539-5551, Oct. 2015.
- [9]. Caijun Zhong, Xiaoming Chen, Zhaoyang Zhang and George K. Karagiannidis, "Wireless Powered Communications: Performance Analysis and Optimization," DOI 10.1109 / TCOMM. 2015. 2488640, IEEE Transactions on Communications.
- [10]. N. Zhao, F. R. Yu, and V. C. M. Leung, "Wireless energy harvesting in interference alignment networks," IEEE Commun. Mag., vol. 53, no. 6, pp. 72-78, Jun. 2015.
- [11]. Xiaojing Chen, Wei Ni, Xin Wang, and Yichuang Sun, "Optimal Quality-of-Service Scheduling for Energy-Harvesting Powered Wireless Communications," DOI 10.1109 / TWC. 2016. 2519411, IEEE Transactions on Wireless Communications.
- [12]. C. Zhong, G. Zheng, Z. Zhang, and G. K. Karagiannidis, "Optimum wirelessly powered relaying," IEEE Signal Process. Lett. vol. 22, no. 10, pp. 1728-1732, Oct. 2015.
- [13]. Ali A. Nasir, D. T. Ngo, Xiangyun Zhou, R. A. Kennedy, and Salman Durrani, "Joint Resource Optimization for Multicell Networks with Wireless Energy Harvesting Relays," arXiv: 1408.4215v2 [cs.IT] 24 Mar 2015.
- [14]. S.D. Rankhamb, A. P. Mane, "Review Paper on Wireless Power Transmission," International Journal of Science and Research (IJSR) Volume 5 Issue 2, February 2016.
- [15]. Y. Huang and B. Clerckx, "Relaying strategies for wireless-powered MIMO relay networks," IEEE Trans. Wireless Commun., vol. 15, no. 9, pp. 6033-6047, Sep. 2016.
- [16]. Xin Lin, Lei Huang, Chongtao Guo, Peichang Zhang, Min Huang, Jihong Zhang, "Energy-Efficient Resource Allocation in TDMS Based Wireless Powered Communication Networks," DOI 10.1109/LCOMM.2016.2639484, IEEE Communications Letters.
- [17]. Slavche Pejovski, Zoran Hadzi-Velkov, Trung Q. Duong, and Caijun Zhong, "Wireless Powered Communication Networks with Non-Ideal Circuit Power Consumption," DOI 10.1109 / LCOMM. 2017. 2680446, IEEE Communications Letters.
- [18]. Seowoo Kang, Han-Bae Kong, Changick Song, H. Lee, and I. Lee, "Transmit Probability Designs for Wireless Peer Discovery with Energy Harvesting," DOI 10.1109 / LCOMM .2016 .2625782, IEEE Communications Letters.
- [19]. G. Huang and D. Tang, "Wireless information and power transfer in two way OFDM amplify-and-forward relay networks," IEEE Commun. Lett. Vol. 20, no. 8, pp. 1563\_1566, Aug. 2016.
- [20]. Haole Chen<sup>1</sup>, Lin Xiao, Tao Zhang, Laurie Cuthbert, "Optimal Pricing with Wireless Powered Communication Network for Energy Saving," 978-1-5090-3423-9/16/\$31.00 ©2016 IEEE.
- [21]. Jian Yang, Qinghai Yang, Kyung Sup Kwak and Ramesh R. Rao, "Power-Delay Tradeoff in Wireless Powered Communication Networks," DOI 10.1109 / TVT.2016.2587101, IEEE Transactions on Vehicular Technology.
- [22]. Zhibin Xie, Yunfei Chen, Yan Gao, Yajun Wang, and Yinjie Su, "Wireless Powered Communication Networks Using Peer Harvesting," 2169-3536, IEEE, February 17, VOLUME 5, 2017.
- [23]. Gaojie Chen, Pei Xiao, James R. Kelly, Bing Li, and Rahim Tafazolli, "Full-Duplex Wireless-Powered Relay In Two Way Cooperative Networks," 2169-3536, IEEE, January 30, VOLUME 5, 2017.
- [24]. Wei Pang, Mithun Mukherjee, Lei Shu, Zhangbing Zhou, and Gerhard P. Hancke, "Energy Utilization Concerned Sleep Scheduling In Wireless Powered Communication Networks," 978-1-5090-1525-2/17/\$31.00 ©2017 IEEE.
- [25]. Parisa Ramezani, and Abbas Jamalipour, "Throughput Maximization in Dual-Hop Wireless

Powered Communication Networks DOI  
10.1109/TVT.2017.2697499, IEEE Transactions on  
Vehicular Technology.

[26]. Hang Li, Chuan Huang, and Shuguang Cui,  
"Multiuser Gain in Energy Harvesting Wireless  
Communications "vol. 5- 2169-3536 -2017 IEEE.

### BIOGRAPHIES



**Vinod V. Lonkar** received the B.E. degree in Electronics & Telecomm from S.S.G.M.College of Engineering Shegaon, Amravati University and M.Tech. Student in Digital Communication, Patel Institute of Engineering & Science. RGPV, Bhopal.



**Jitendra Kumar Mishra** received the B.E. degree in EC from RGPV Bhopal & M.Tech. In DC from BUIT, Bhopal.

Respectively, He is currently an Associate Professor & H.O.D. in Electronics & Communication Engineering Department at Patel Institute of Engineering & Science, Bhopal. His research area are Antenna & Wave propagation, Digital signal processing, wireless communication, Image processing.