

An Empirical Study On Smart Android Based Security Surveillance For Detective Applications

Preeti¹, Sunita Rani²

¹ M.Tech Network Security, Bhagat Phool Singh Women University, CSE and IT Department, Haryana, India

² Assistant Professor, Bhagat Phool Singh Women University, CSE and IT Department, Haryana, India

Abstract: Private internet access gives multi-layered security with protection assurance utilizing VPN servers. The administrations work at the TCP/IP interface level, which implies the majority of the customers applications will be secured, not simply his web program.

A few, simple to utilize and promptly accessible programming packages that permit spammers and crooks to capture your information exist, with additionally developing every day. The client's information, documents and security may be at danger. The papers describe the implementation of android UDP sensor system and mobile matlab. VPN or Virtual Private Network is mostly used in network industry Through the VPN the communication or data transaction is more secure so mostly industry used VPN. Android based systems are widely used as compared to another system. In this paper describe how to trace a android device using UDP sensor by VPN. UDP is user data gram protocol which is generally fast than TCP, because in the UDP there is no need to establish a connection for data transmission.

Key Words: Virtual Private Network, UDP, Mobile sensor.

1 INTRODUCTION

Private internet access gives multi-layered security with protection assurance utilizing VPN servers. The administrations work at the TCP/IP interface level, which implies the majority of the customers applications will be secured, not simply his web

Program. It is turning out to be progressively more straightforward to seize and take information and data from insecure connections. This case demonstrates to gather position information from an Android gadget and presentation it on a guide. Scope and longitude directions are utilized to stamp the gadget's course. Speed data is utilized to add shading to the course. The last result is a visual representation of area and pace for the device's adventure. On the off chance that a client get to the web through public wifi hotspots, shared

internet routers, or even through the client's very own provider, client's data, files and privacy may be at risk. The client's information, documents and security may be at danger. Android Sensors supports several sensors. The Sensor class defines several constants for accessing the different sensors.

Most Android devices allow to determine the current geo location. This can be done via a GPS (Global Positioning System) module, via cell tower triangulation or via wifi networks. In the proposed work , VPN with UDP is used to track the android devices .Till know the researchers were working on the Location tracking using the web services which is not secure .

VPNs replace a client's IP address with one from the VPN server. IP locations are what sites and third party utilization to distinguish clients and their areas. Since a client's IP location is supplanted by one from the VPN server, sites and third parties can't assemble a profile about the client or tell where they are found. A Virtual Private Network goes about as an encryption passage in the middle of the user and the Internet, verifying that Internet access is mysterious and that your web searching is secure. Many computers connected with a VPN, and the information of these computers is encoded before they interface with the Internet.

Network access Providers consistently utilize Deep Packet Inspection to see what client's do on the web. They utilize this data to utmost association speeds. At the point when a client join with the Internet utilizing an Android VPN, the ISP can just see encoded information and the VPN server but it cannot reach to the data.

2 PROPOSED WORK

2.1 Sensor UDP

The simulation system created gain GPS information from an Android Device and plot area and speed on a map. The simulator demonstrates to gather position information from an Android devices and showcase it on a guide. Scope and longitude directions are utilized to check the device's route. Speed data is utilized to add shading to the course.



Fig-1 VPN and Android Sensor

This app sends sensor and location information as CVS lines via UDP packet. Sensor information includes values from accelerometer, magnetic field meter and orientation. You can select network and/or GPS as location provider(s). This app is just for simulation.

2.2 Mobile Matlab

MATLAB Mobile is a lightweight desktop that can be installed on Android devices that join with a MATLAB session running on MathWorks Cloud or on your PC. From the Android devices, you can run scripts, make figures, and perspective results.



Fig-2 Matlab Mobile

2.3 Getting Started with Matlab Mobile

1. Install MATLAB Support Package for Android Sensors.
 - To begin quickly from your desktop computer, download the MATLAB Support Package for Android Sensors and open the installer file.
 - Alternatively, from MATLAB, pick Add-ons from the Toolstrip, and afterward pick Get Hardware Support Packages. This will open the Support Package Installer.
 - Choose Android Sensors from the rundown and take after the directions.
2. Connect to the computer from MATLAB Mobile.
 - Use the MATLAB Connector to interface MATLAB Mobile to the MATLAB session on your PC.
 - For directions, allude to the beginning aide.
3. Create a mobiledev object.
 - Create a mobiledev item to get sensor information from MATLAB Mobile
 - `>> obj = mobiledev`

In MATLAB Mobile

1. Turn on sensors and send information.
 - ❖ Select the Sensors alternative from the activity bar.
 - ❖ Tap the symbol of the sensor you need to turn on.
 - ❖ Tap "Begin Sending" to send information to MATLAB.

Get GPS Data from the Android Device and Plot Location and Speed on a Map. In this illustration, a VPN was utilized on the gadget to keep up an association with the system while driving.

3 SIMULATION TOOL

For the proposed work, SensorUdp Android Application is used. Open this application in Mobile. This application is using android sensors. Sensors used are Acceleromee Magretic Field Oricntation GPS Tracking. Open MATLAB with the path containing the project folder.

After Installation finished. This in tool main interface of the Simulation tool Containing Mobile Setup button and Android Device button.

Click on Mobile Setup button to create setup. This button calls setupmobile function. For this function setupmobile.m is created. SETUPMOBILE Adds directory where sensorgroup functionality resides to MATLAB path. It uses addpath and savepath functions which modify pathdef. If directory where sensorgroup functionality resides is deleted in order to prevent warning during MATLAB startup MATLAB path has to be cleared by running savepath command.



Fig-3 Simulation Interface after android device

On clicking Connect Android Device, It will create the object of the class sensorgroup and calls MobileSensorExplorer method. MobileSensorExplorer Explore data from the mobile device sensors. MobileSensorExplorer() displays the readings from all active sensors on an Android or Apple device. MobileSensorExplorer(DEVICETYPE) displays readings from the sensors on the selected type of device. DEVICETYPE may be 'AppleMobile' or 'AndroidMobile'. On the off chance that a device tupe is not indicated, set up a dialog to pick it. Check that the device type is valid. The deviceType should be "AppleMobile" or "AndroidMobile" Set up the connection with the Android Device. Utilize the undocumented component

```

hConnectionFigure = [];
hMainFigure = [];
dev = [];
portable = [];
mobile.Acceleration = [];
mobile.AngularVelocity = [];
mobile.MagneticField = [];
mobile.Orientation = [];
mobile.LatitudeLongitude = [];
mobile.Altitude = [];
mobile.Speed = [];
mobile.Course = [];
mobile.Membrane = [];
>>global obj;
>>obj = sensorgroup('AndroidMobile')
>>showLatestValues(obj)
    
```

Function displayConnectionTip(tipText)
displayConnectionTip shows dialog with connection information. This function is called by sensorgroup with the text of the message .

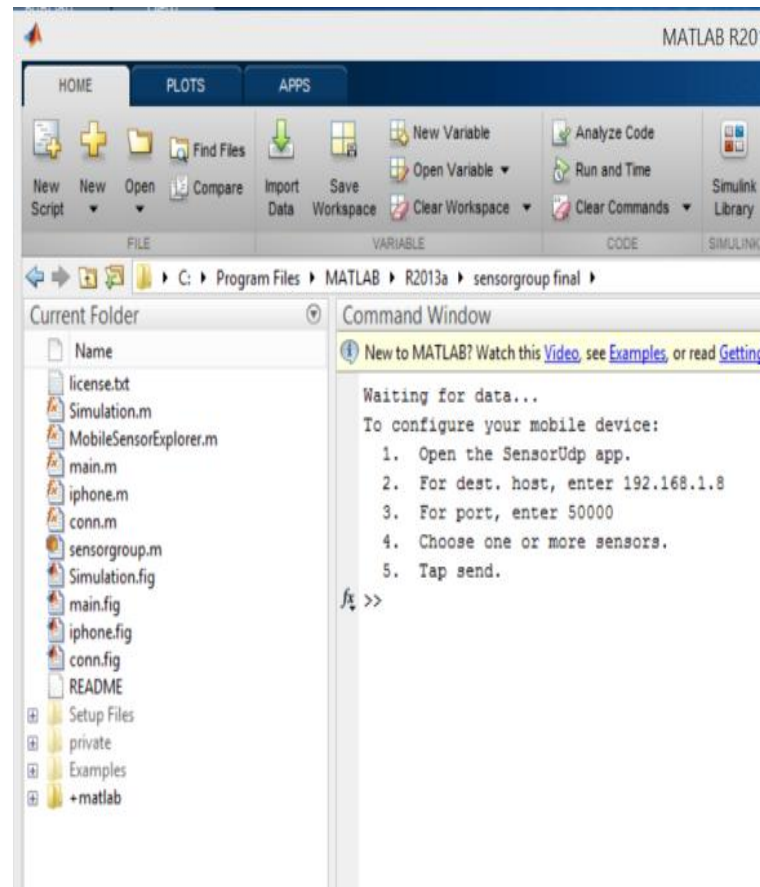


Fig-4 Connect Android Device

Click on the Connect Android device button to connect the android device to the Matlab. This will show the IP Address of the system and Port No. As shown in above figure.

Give these information on the SensorUdp Application.

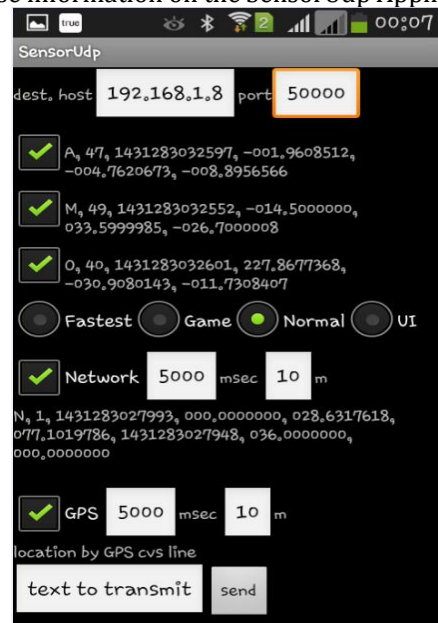


Fig-5Tracking the sensor related information.

Tap the accelerometer, Magnitude, orientation GPS and Network checkboxes to get information of the locations.



Fig-6 Showing GPS Locations

Now more the mobile to store longitude and latitude positions. To track mobile on the system, create global object as used in sensor group class.

```
>>global obj
>>obj.showLatestValues
>>obj.Acceleration % To track acceleration of the android device.
```

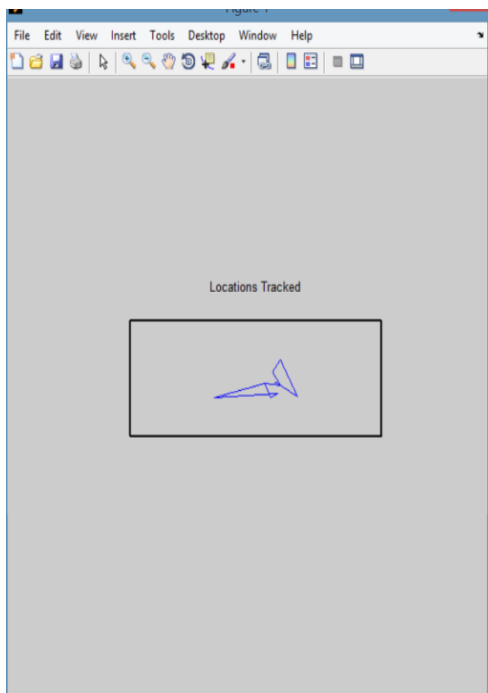


Fig-7 Location Tracked

Now to count the number of steps click on the step count button on simulation interface.

To get all the longitude and latitude positions tracked through VPN can be collected in an array using matlab command.

```
>>[lat, lon, sp ] = poslog (obj).
```

Zoom the guide in on the course.

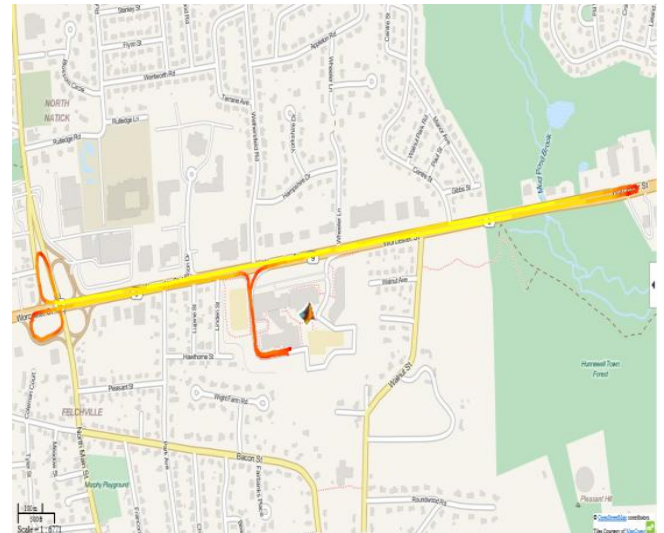


Fig-8 Path Tracked

The last show gives a visual representation of area and speed all through the route.

Clean up

Turn off the position sensor and clear mobiledev.

```
m.PositionSensorEnabled = 0;
```

```
clear
```

```
m;
```

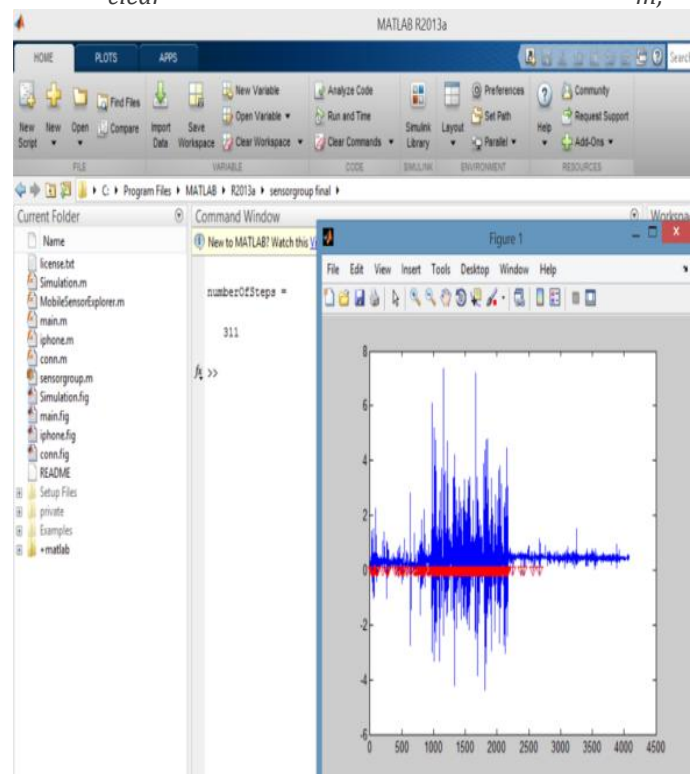


Fig-9 Number of steps taken

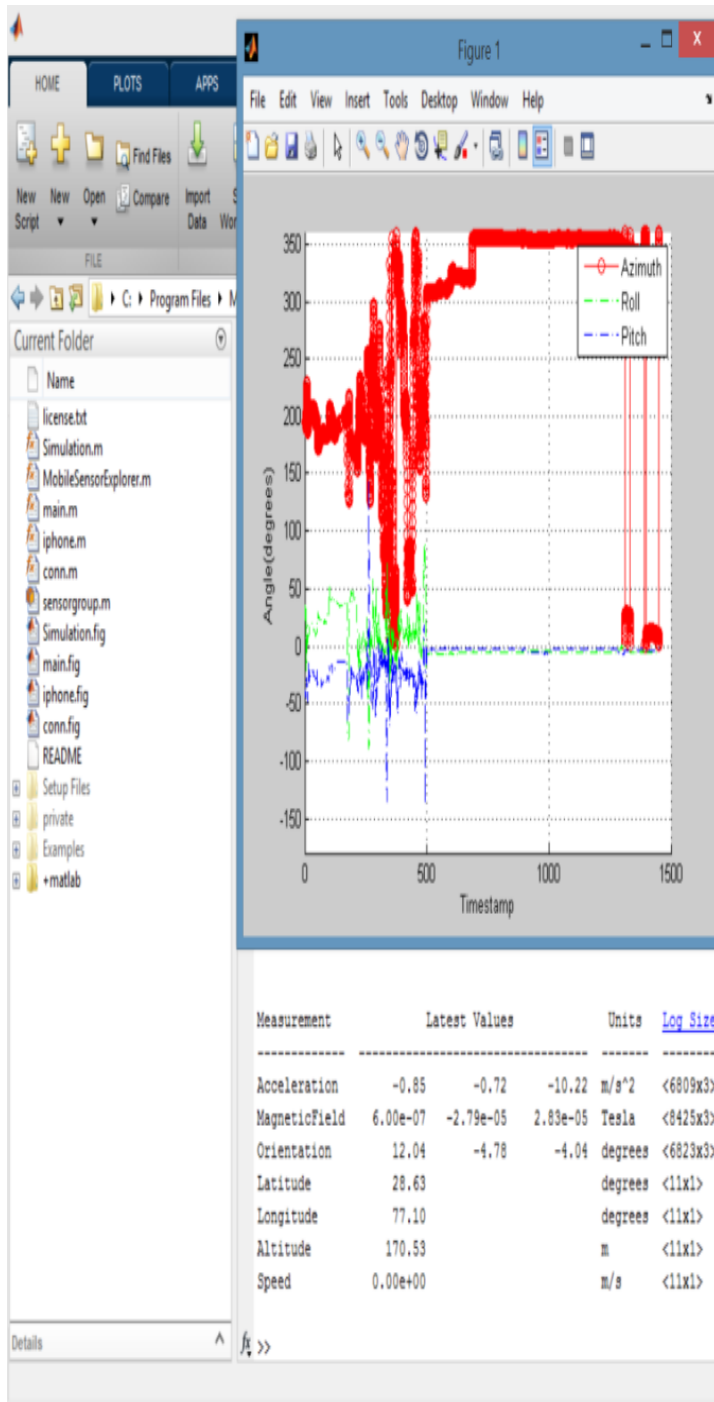


Fig- 10 Azimuth, Roll and Pitch

4 CONCLUSIONS

The main conclusion of this term paper is the Android sensor using VPN which is mainly used for the tracking of Android device. Through is we can easily track Android device. This is also used for the security purpose.

REFERENCES

1. MohdNazri Ismail and MohdTaha Ismail. "Analyzing of Virtual Private Network over Open Source Application and Hardware Device Performance". European Journal of Scientific Research (EJSR), Vol. 28 No.2, pp. 215-226, Euro Journals Publishing.Inc. 2009.
2. CISCO VPN and VPN technologies
3. S.Kumudu and A.Seyed Shahrestani. "Wireless VPNs: An Evaluation of QoS Metrics and Measures. 2005 IEEE. K. Sharma and M. K. Ghose, "Wireless Sensor Networks: An Overview on its Security Threats," IJCA, Special Issue on "Mobile Ad-hoc Networks" MANETs; CSE Department, vol. 1, no. 1, pp. 42-45, 2010.
4. Michael Krishnan, "Intrusion Detection in Wireless Sensor Networks." ACM SENSYS, November 2010.
5. Marcelo H.T. Martins, "Decentralized Intrusion Detection in Wireless Sensor Networks." Q2SWinet'05, October 13, 2010.
6. Ioannis Krontiris, "Intrusion Detection of Sinkhole Attacks in Wireless Sensor Networks."International Journal of Advanced Science and Technology Vol. 36, November, 2009.
7. Aruna Malik, Harsh K Verma, Raju Pal. "Impact of Firewall and VPN for securing WLAN", International Journal of Advanced Research in Computer Science and Software Engineering May 2012.
8. Jaime Lloret, "Intrusion Detection Algorithm Based on Neighbor Information Against Sinkhole Attack inWireless Sensor Networks." The Computer Journal Advance Access published May 13, 2014.