

Tuning controller parameters and load frequency control of multi-area multi-source power system by Particle Swarm Optimization Technique

V.Jyothi¹, P. Bharat Kumar²

¹ PG Scholar, Department of EEE, JNTU Anantapur, Andhra Pradesh, India

² Lecturer, Department of EEE, JNTU Anantapur, Andhra Pradesh, India

Abstract -

This article presents the setting of the controller parameters using particle swarm optimization (PSO) and its application to the load frequency control (LFC) of a power system from several sources that have different production sources as hydropower, thermal and gas power plants. A controller (PID) proportional integral derivative is used for tuning and analysis of the proposed model. The optimization of particle swarm algorithm (PSO) has been developed for the appropriate control settings for optimal performance. The superiority of the proposed approach was demonstrated by comparing the results with the optimum output feedback controller algorithm used for the same power systems. The comparison is made through various performance measures such as excess, time and standard error criteria of power frequency and tie-line after a disturbance step (SLP) load perturbation. Note that the dynamic performance of the proposed controller is improved by using PSO. Further-more, it also notes that the proposed system is robust and unaffected by the change of the charge state, the parameters of the system and the size of SLP.

1. INTRODUCTION:

The problem of controlling the actual output power generating units in response to changes in the frequency of the exchange system and tie-line power within specified limits is known as load frequency control (LFC). In general, it is considered as a part of automatic generation control (AGC) and is very important in the operation and control of power systems. Energy systems on a large scale usually consist of control zones or regions that represent coherent groups of generators. The control area may have a combination of thermal, hydro, gas, nuclear and renewable sources of energy. Researchers around the world are trying to propose several strategies for LFC power systems in order to maintain the system frequency and tie line flow in their programmed values during normal operation and during small perturbations. Paper is literature that most of the works of LFC were carried out in two hydrothermal

systems or thermal-thermal areas. It is noted that considerable research will propose best AGC systems based on modern control theory, neural networks, fuzzy systems theory, reinforcement learning [8] and ANFIS approach. But these advanced approaches are complicated and require familiarity of users to these techniques, thus reducing its applicability. Alternatively, classic controllers Proportional Integral Derivative (PID) remain the preferred choice of an engineer because of its structural simplicity, reliability and favorable relationship between performance and cost. It also offers the simplified dynamic modeling, requiring less user skills, and minimal development effort, which are the main problems of engineering practice. The growth in the size and complexity of power systems with increased energy demand has necessitated the use of intelligent systems that combine knowledge, techniques and methodologies from various sources for real-time control of energy systems.

The burden of a power system is constant and never given to ensure the quality of energy supply, a frequency controller load is needed to maintain the system frequency to the desired nominal value. In an energy system deregulated, each control area contains different types of uncertainties and various disturbances due to more complex modeling errors of the system and change the structure of power system Therefore, a control strategy need not only maintains the constancy of the flow rate and tie-desired power but also achieves zero steady-state error and inadvertent exchange.

The controller proportional integral derivative (PID) is the most popular feedback controller used in the process industries. It is a robust controller, easy to understand that it can provide excellent control performance despite the various dynamic characteristics of the process plant. As the name suggests, the PID algorithm has three basic modes, proportional mode, integral and derivative modes. A proportional controller has the effect of reducing the rise time but never eliminates steady state error. An integral control has the effect of eliminating the steady-state error,

but it can make the transient response worse. Derivative control has the effect of increasing the system stability by reducing excess, and improved transient response. Proportional integral controllers (PI) are now more often used in the industry type. A control without the derivative mode (D) is used when: not a fast system response is required, the great disturbance and noise are present during operation of the process and there are long delays in the transport system. Derivative mode improves system stability and allows increased gain and integral gain decreased which in turn increases the speed of response proportional controller. PID controller is often used when quick response and stability are required. In view of the foregoing, I, PI and PID controllers are considered structured herein.

In the design of a modern technique based on heuristic optimization controller, the objective function is first defined on the basis of specifications and undesired limitations. The design of the objective function to tune the controller is usually based on a performance index that considers the entire closed-loop response. Typical output specifications in the time domain are overshooting peak, rise time, settling time, and steady-state error.

2. Design control system under study

Two area system covering hydraulic, thermal units, gas turbines warming and is considered in the first instance for the controller design for the system. The linearized models of governors, reheat turbines, hydraulic turbines, gas turbines are used for simulation and study LFC power system as shown in Fig. 1. Each unit has its parameter adjustment factor to decide the participation and contribution to the rated load. The sum of the participation factor of each control must be equal to 1. In Fig. 1 R1, R2, R3 are the parameters of regulation, hydraulic and gas thermal units respectively, UT, UH and UG are the outputs of control, thermal hydraulic units and gas respectively, KT, KH and KG are participation factors of thermal, hydro and gas generating units, respectively, T_{SG} is the constant speed governor thermal unit time in seconds, T_T steam turbine time constant in seconds, Kr is the constant reheat steam turbine, is Tr reheat time constant of the steam

turbine sec, T_{TW} is time nominal starting penstock water in seconds, T_{RS} is the regulator of the hydraulic turbine speed reset the time in seconds, T_{RH} is hydro turbine regulator Time constant speed transient fall in s, T_{HG} is hydro turbine main regulator time constant servo speed in seconds, X_C is the time constant standby gas turbine, speed regulator in seconds, and c is the time constant delay of the gas turbine, the speed controller in seconds, c_g is the valve positioner of the gas turbine, b_g is the constant of the gas turbine valve positioner, TF is the gas turbine constant time fuel sec, T_{RC} is the gas turbine time delay combustion reaction sec T_{CD} is the gas turbine compressor discharge at constant volume time in sec K_{PS} gain of power system in Hz / puMW, T_{PS} is the system time constant power in sec ΔF is the incremental change in the exchange rate and incremental load ΔPD . The nominal system parameters are given in reference

As the change of power between control areas will be minimized quickly, ITAE is a better objective function in studies of AGC and therefore used in this document. The objective function is expressed as:

$$J=ITAE=\int_0^{t_{sim}} |\Delta F| . t . dt$$

where ΔF is the frequency deviation system and t_{sim} is the simulation time interval. The problem constraints are the limits of the driver parameters. Therefore, the design problem can be formulated as the following optimization problem. Subject to minimize J

$$K_{I_{min}} \leq K_I \leq K_{I_{max}}$$

where J is the objective function and $K_{I_{min}}$ and $K_{I_{max}}$ are the maximum control parameters and minimum. As reported in the literature, the minimum and maximum values of the controller parameters are chosen as $_1$ and 1 respectively.

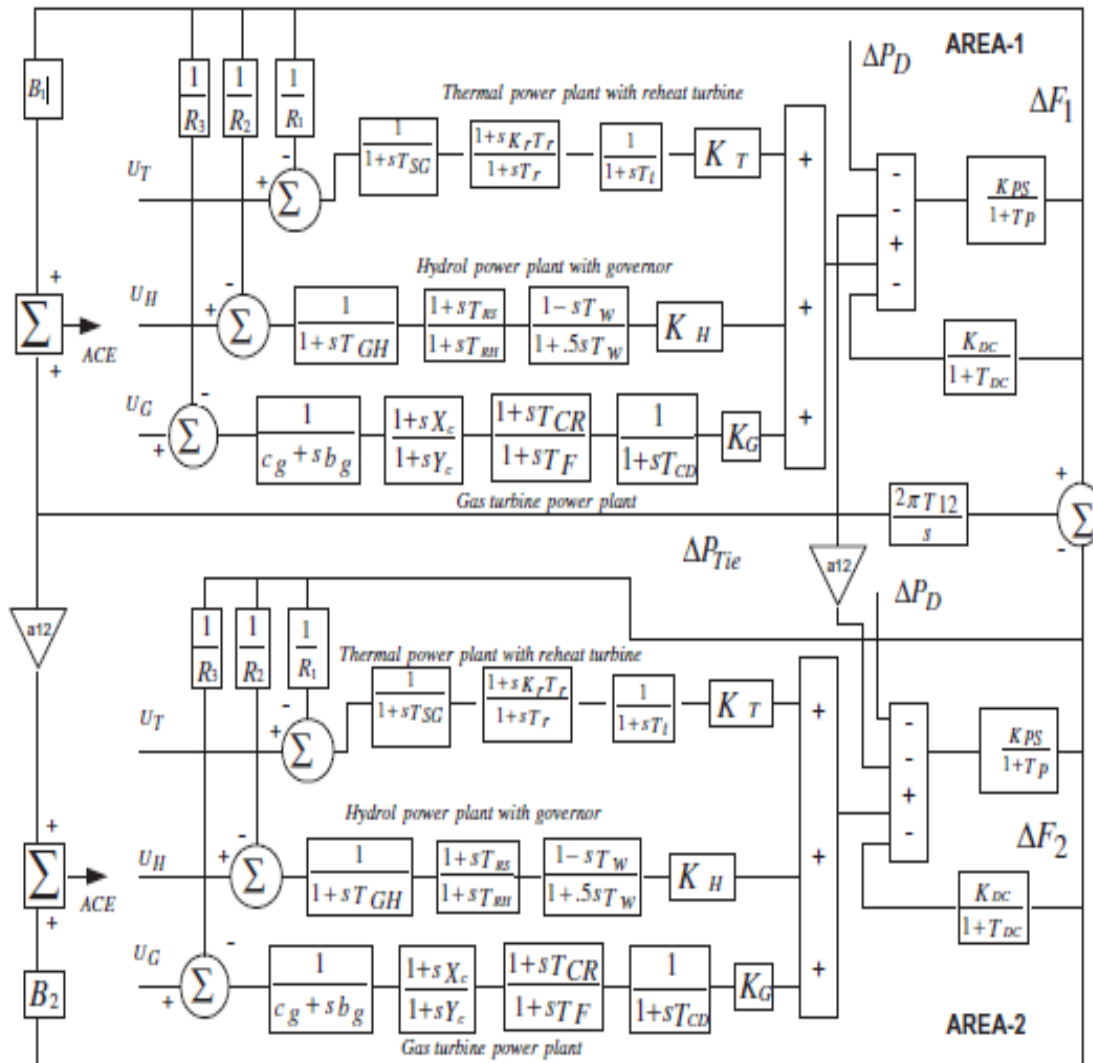


Fig.1. Transfer function model of multiple sources of multiple area with HVDC link

3. CONVENTIONAL METHODS FOR CONTROLLER TUNING:

The proportional integral derivative controller (PID) is the most popular feedback controller used in the process industries. It is robust, easy to understand controls that can provide excellent control performance despite various dynamic characteristics of the treatment plant. As its name suggests, the PID algorithm consists of three basic modes: proportional mode, integral and derivative modes. A proportional controller has the effect of reducing the rise time, but never eliminates the steady-state error. Integral control has the effect of eliminating the steady-state error, but it may make the transient response worse. Derivative control has the effect of increasing the stability of

the system, thereby reducing the overshoot, and improving the transient response. Proportional Integral controllers are the type most often used in industry today. A control method without the derivative (D) is used when a fast system response is not required, significant disruption and noises are present during operation of the process and there are significant delays in the transport system. Derivative mode enhances system stability and allows the gain to decrease and increase integral gain which in turn increases the speed of the response of the proportional controller. PID control is often used when the stability and quick response is required. From the above discussion, PID,PI,I controllers are considered for load Frequency Control in this paper

The tuning is defined as the setting of control parameters to the optimum values for the desired control response. Stability is a basic requirement. However, different systems have different behavior, different applications have different requirements and requirements may conflict with one another. PID tuning is a difficult problem, although there are only three parameters and principle is simple to describe, because it must answer complex criteria within the PID control. So there are different loop tuning methods, some of them:

- Manual setting method
- Ziegler-Nichols tuning method
- PID tuning methods software

4. DIFFERENTIAL EVOLUTION

Differential Evolution (DE) is a population based stochastic optimization algorithm capable of handling not differentiable, non-linear and multi-modal objective functions, with some readily selected control parameters. The problem of the design of the proposed controller is formulated as an optimization problem and DE is used to search optimal control parameters. DE works with two people; old generation and the new generation of the same population. The population size is adjusted by the parameter NP. The population is composed of actual dimension values D vectors that equals the number of design parameters / variables control. The population is initialized randomly within initial parameter. The optimization process is affected by three main operations: a mutation, crossover and selection. In every generation, the individuals of the current population become targets vectors. Vector for each target, the mutation operation produces a mutant vector, by adding the weighted difference between two vectors selected randomly a third vector. The cut operation generates a new vector, called test vector by mixing the entries of the vector mutant with those of the target vector. If the test vector gets a fitness value better than the target vector, then the test vector replaces the target vector in the next generation. Evolutionary operators are described below.

4.1. Initialization

For each parameter j with the lower and upper bound the values of the initial parameters are usually uniformly at random in the interval $[X^L_j; X^U_j]$.

4.2. Mutation

For given parameter vector $X_{i,G}$, three vectors $(X_{r1,G}, X_{r2,G}, X_{r3,G})$ are randomly selected so that the indices i, r1, r2 and r3 are distinct. A donor vector $V_{i,G+1}$ is produced by

adding the weighted difference between two vectors for third vector as

$$V_{i,G+1} = X_{r1,G} + F \cdot (X_{r2,G} - X_{r3,G})$$

where F is a constant from (0, 2)

4.3. Crossover

Three parents are selected for crossover and the child is a perturbation of one of them. The trial vector $U_{i,G+1}$ was developed from elements of the target vector $(X_{i,G})$ and elements of donor vector $(X_{i,G})$. Donor vector elements enter the vector trial with probability CR:

$$U_{j,i,G+1} = \begin{cases} V_{j,i,G+1} & \text{if } \text{rand}_{j,i} \leq CR \text{ or } j = I_{rand} \\ X_{j,i,G+1} & \text{if } \text{rand}_{j,i} > CR \text{ or } j \neq I_{rand} \end{cases}$$

With $\text{rand}_{j,i} \sim U(0, 1)$, I_{rand} is a random integer from $(1, 2, \dots, D)$ where D is the solution's dimension i.e. number of control variables. I_{rand} ensures that $V_{i,G+1} \neq X_{i,G+1}$

4.4. Selection

The target vector $X_{i,G}$ is compared with the test vector $V_{i,G+1}$ and the one with the best fitness value is admitted to the next generation. The selection operation in DE can be represented by the following equation:

$$X_{i,G+1} = \begin{cases} U_{i,G+1} & \text{if } f(U_{i,G+1}) < f(X_{i,G}) \\ X_{i,G} & \text{otherwise} \end{cases}$$

Where $I \in [1, N_p]$

5. PSO CONTROLLER FOR INTERCONNECTED POWER SYSTEM

PSO is a robust stochastic optimization technique based on movement and swarm intelligence. It was developed in 1995 by James Kennedy (social psychologist) and Russell Eberhart (electrical engineer). A number of agents (particles) that constitute a swarm move in the search space in search of the best solution is used. Each particle is treated as a point in an n-dimensional space, which adjusts its "fly" according to his own experience of flight and flight experience of other particles. Each particle keeps track of its coordinates in space of the solution that are associated with the best solution (fitness) it has achieved so far by the particle. This value is called personal best, pbest. Another best value that was followed by the PSO is the best value obtained so far by any particle in the neighborhood of that particle. This value is called gbest. All PSO particles remain as members of the population over the course of the PSO term is the only algorithm that does not implement the

survival of the fittest. No crossover operation in PSO. In EP balance between local and global search you can be set through the strategy parameter, while PSO equilibrium is reached through the inertial weight factor (w).

PSO optimized PID controller is designed for LFC and tie-power control. The objectives are to control the frequency and tie-between area with good power oscillation damping, also get good performance in this study, the optimal values of the PK parameters KI and Kd for PID controller easily and accurately calculated using a PSO. In a typical run of the PSO, an initial population is generated randomly. This is known as initial population generation 0th. Each individual of the initial population has an index value associated performance. The use of performance index information, the PSO then produces a new population. In order to obtain the performance index value for each of the individuals in the current population, the system must be simulated. The PSO then produce the next generation of people who use crossover operators and mutation breeding. These processes are repeated until the population is converged and the optimal value of parameters found. The document aims to use the PSO algorithm in order to obtain optimal values of the PID controller to a system of two frequency load area. Each adjustment controller may represent a particle in the search space that changes its parameters proportionality constant K_p , an integral constant K_i , and K_d derivative constant to minimize the error function function. The error function used here is the integral time absolute error (ITAE).

PSO steps: Steps PSO as implemented for the optimization:

Step 1: Initialize an array of particles with random positions and velocities associated to satisfy the inequality constraints.

Step 2: Check satisfying the equality constraints and modify the solution if necessary.

Step 3: Assess the fitness function of each particle.

Step 4: Compare the current value of the fitness function better with particles above value (p_{best}). If the current fitness value is lower, then assign the current value of fitness for p_{best} and assigned the coordinates (positions) to p_{bestx} .

Step 5: Determine the current global minimum value of fitness between the current positions.

Step 6: Compare the current global minimum above the minimum overall (g_{best}). If the current global minimum is

better than g_{best} , then assign the global minimum current for g_{best} and assigned the coordinates (positions) to g_{bestx} .

Step 7: Change speeds.

Step 8: Each particle moves to the new position and return to step 2.

Step 9: Repeat step 2-8 until a stopping criterion is satisfied or reached the maximum number of iterations

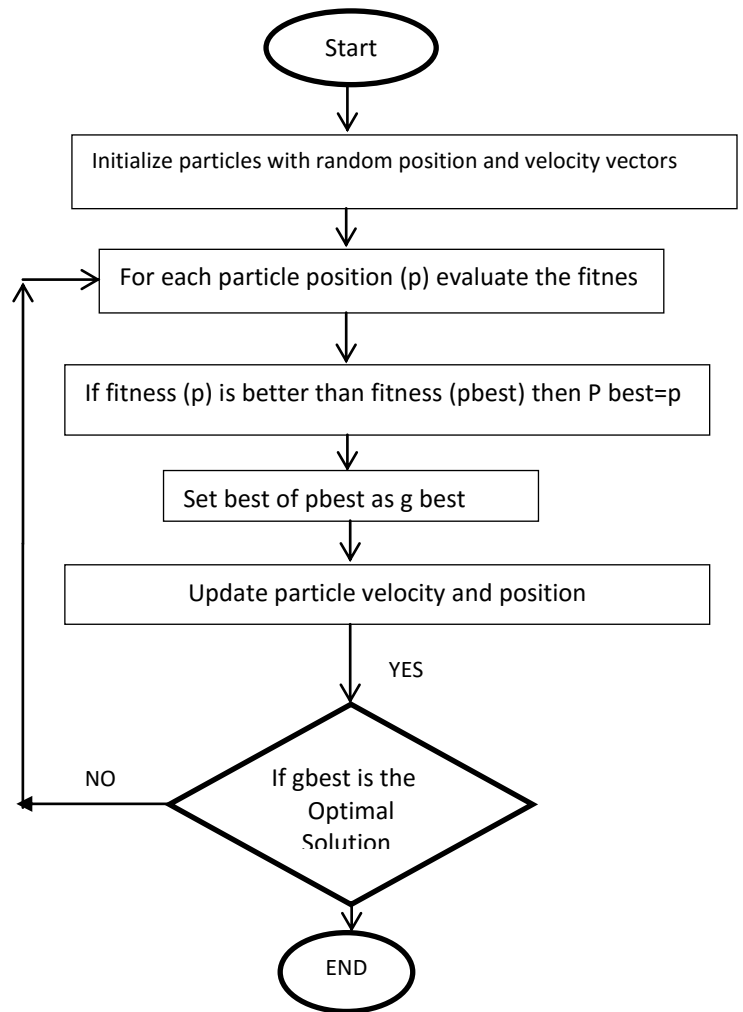


Fig.2. Flowchart for PSO

6. RESULTS AND COMPARISON:

During the simulation study, Error signals Δf_1 , Δf_2 and tie line power required for the controller software is transferred to the PSO. All positions of the particles in each dimension are held within the limits specified by the user, and Velocities subject to the $[V_{min}, V_{max}]$ range. A gradual increase in demand of 0.01 pu is applied to zone 1. The frequency deviation of the first area frequency and Δf_1 and second Δf_2 deviation of the area and the area between clamping signal power closed loop system shown in Fig. 3, 4 and 5. Similarly a step increase in demand of 0.01 applies to Area2. frequency deviation of the first area and the Δf_1 and Δf_2 frequency of the second area and the area between clamping signal power circuitry of the closed loop system are shown in Fig. 6,7,8.

Table 1: Parameters of the controller to the system using different controllers

	Kp	Ki	Kd
PSO	1.34	3.48	1.2
DE	2.28	0.1514	0.8464
PID	0.933	0.7185	0.4198
PI	1.01	1.6974	-
I	-	1.46	-

Simulation results show improved performance in the time domain specifications for a load of 0.01 pu step Using the PSO approach, global and local solutions could be found simultaneously for a better adjustment of the controller parameters . The PID value that was obtained by the PSO algorithm is compared with the PID controller derived from differential evolution algorithm, PID controller, PI controller and the I in different perspectives namely, robustness and stability. All simulations were carried out using MATLAB A comparison of time domain specifications overshoot and settling time for a load of 0.01 pu step in area 1 are tabulated as given in the table (2) and it is very clearly that the PSO based controller dramatically reduces overshoot by a large value. Settling time improved.

Table 2: Analysis of the system performance by using different methods of setting the controller

	Settling Time	Max.Overshoot
PSO	8.4	0.0098
DE	9.06	0.0103
PID	13.76	0.078
PI	8	0.07
I	9.94	0.09

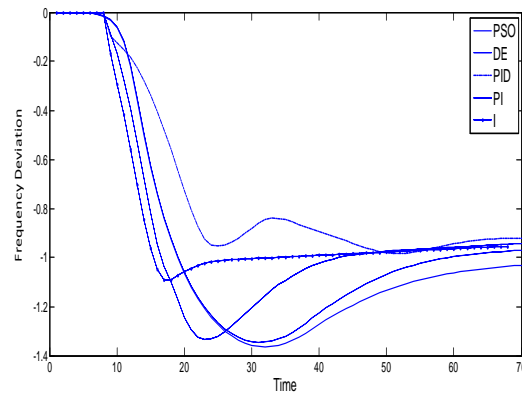


Fig.3. Change in frequency of the Zone-1 for 1% change in the area-1

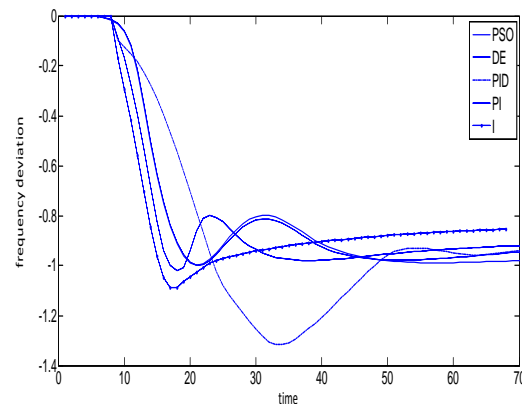


Fig.4. Change in frequency of the Zone-2 for 1% change in the area-1

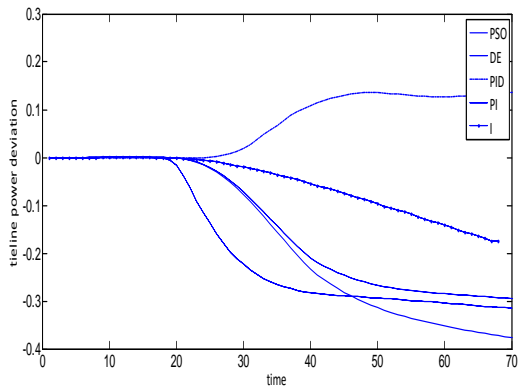


Fig.5. Change in linking power lines to the 1% change in the area-1

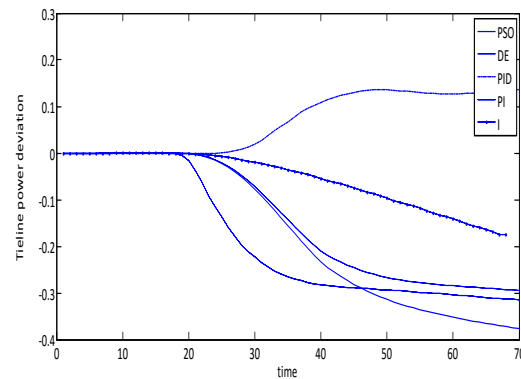


Fig.8. Change in linking power lines to the 1% change in the area-2

7. Conclusion

Load Frequency Control (LFC) system power supply multiple units with different sources of electricity generation and thermal, hydro and gas power plants is presented in this paper. The controller parameters are optimized using Swarm Optimization technique particles (PSO). Initially, Multi System Multi Area Power source is considered and the control parameters PSO technique is tuned by performing multiple runs of the algorithm for each variation of control parameters. The parameters Proportional Integral Derivative (PID) are optimized using PSO optimization technique. The superiority of the proposed approach has been demonstrated by comparing the results with integral controller (I), proportional integral controller (PI), Proportional Integral Derivative (PID) controller and the PID controller used for the same energy systems using various performance measures such as settling time and criteria of standard frequency error sedimentation and tie-line power deviation after a load disturbance step (SLP). It is noted that the dynamic performance of the proposed controller is improved. Furthermore, it is also noted that the proposed system is robust and not affected by the change in the load condition, the system parameters and the size of SLPs.

Appendix B: System Settings

$B_1 = B_2 = 0.4312$ p.u. MW/Hz; $P_{rt} = 2000$ MW; $P_L = 1840$ MW; $R_1 = R_2 = R_3 = 2.4$ Hz/p.u.; $T_{SG} = 0.08$ s; $T_T = 0.3$ s; $K_R = 0.3$; $T_R = 10$ s; $K_{PS1} = K_{PS2} = 68.9566$ Hz/p.u. MW; $T_{PS1} = T_{PS2} = 11.49$ s; $T_{12} = 0.0433$; $a_{12} = -1$; $T_W = 1$ s; $T_{RS} = 5$ s; $T_{RH} = 28.75$ s; $T_{GH} = 0.2$ s; $X_C = 0.6$ s; $Y_C = 1$ s; $c_g = 1$; $b_g = 0.05$ s; $T_F = 0.23$ s; $T_{CR} = 0.01$ s; $T_{CD} = 0.2$ s; $K_T = 0.543478$; $K_H = 0.326084$; $K_G = 0.130438$; $K_{DC} = 1$; $T_{DC} = 0.2$ s.

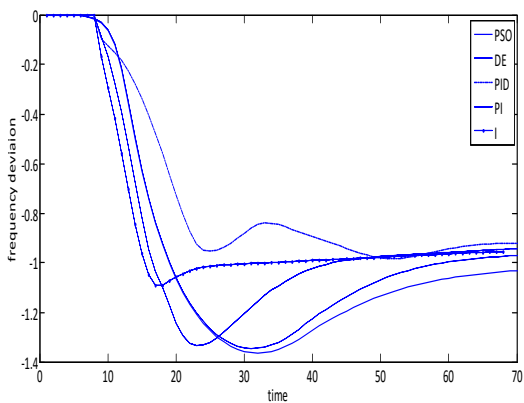


Fig.6. Change Frequency Zone-1 for the 1% change in the area-2

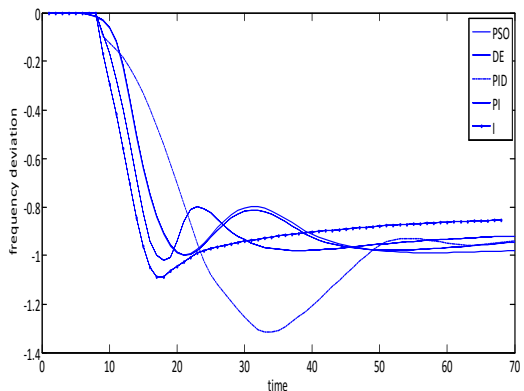


Fig.7. Change in frequency of the Zone-2 for 1% change in the area-2

REFERENCES

- [1] Banaja Mohanty, Sidhartha panda, PK Hota., Controller tuning parameters of differential evolution algorithm and its application to load frequency control system of multi-source energy, electric power and energy systems 54 (2014) 77-85
- [2] Kennedy, J., Eberhart, RC, *Particle Swarm Optimization*, Proc. IEEE International Conference on Neural Networks, Perth Australia, IEEE Service Center, Piscataway, NJ, IV: 1942-1948, 1995.
- [3] Gaing, ZL., A Particle Swarm Optimization Approach for the optimal design of PID In AVR system controller, IEEE Transactions Energy conversion, Vol.19, No.2, June 2004.
- [4] Kim Dong Hwa and Park Jin Ill Intelligent PID Controller Setting the AVR system using GA and PSO Springer-Verlag Berlin Heidelberg : ICIC 2005, Part II, LNCS 3645, pp 366-375 (2005).
- [5] Kundur P. *Power system stability and system control*. New York: McGraw-Hill; 1994.
- [6] Elgerd OI. *Electricity systems theory introduces energy*. New Delhi: Tata McGraw-Hill; 1983.
- [7] Hassan B. *robust feed system*. New York: Springer; 2009.
- [8] Ibraheem, Kumar P, DP Kothari. Recent philosophies automatic generation control strategies energy systems. IEEE Trans Power Syst 2005; 20: 346-57.
- [9] Parmar KPS, Majhi S, DP Kothari. Load frequency control of real power generation system with multi-source energy. Int J Syst Energy Power Elect 2012; 42: 426-33.
- [10] DK Chaturvedi, Satsangi PS, PK Kalra. Control load frequency: A general neural network approach. Electronic Power Energy Syst 1999; 21: 405-15.
- [11] Ghosal SP. The optimization of the PID gains particle swarm optimization fuzzy automatic generation control based. Electr Power Syst Res 2004; 72: 203-12.
- [12] Ahamed TPI, PSN Rao, PS Sastry. A reinforcement learning approach of automatic generation control. Electr Power Syst Res 2002; 63: 09/26.
- [13] Khuntia SR, Panda S. simulation study for the automatic control of generating a multi-power system ANFIS focus area. Soft Comput Appl 2012; 12: 333-41.
- [14] Saikia LC, J Nanda, S. Mishra Performance comparison of several classical

AGC controllers for multiple interconnected areas thermal system. Int J Elect

Energy Power Syst 2011; 33: 394-401.

[15] Nanda J, Mishra S, Saikia LC. Maiden application based bacterial foraging

optimization technique in controlling automatic generation multiarea. IEEE Trans

Power Syst 2009; 24: 602-9.

BIOGRAPHIES



V. Jyothi currently pursuing M.Tech in Control Systems at JNTUA College of Engineering and Technology Anantapur, Andhra Pradesh. Her area of interest is Control Systems.



P. Bharat Kumar, lecturer in JNTUA College of Engineering and Technology Anantapur, Andhra Pradesh.