

Superiority of OPDC and gOPDC measures against PDC and gPDC

Shaikh Nilofar T.¹

¹ Student, Department of Electronics & Telecommunication, SVERI'S College of Engineering, Maharashtra, India

Abstract - This paper is an attempt to study & analyze behavior of brain connectivity measures i.e. partial directed coherence (PDC), Generalized partial directed coherence (gPDC), Orthogonalized partial directed coherence (OPDC) & Generalized orthogonalized partial directed coherence (GOPDC). The behavior of this approach studied using simulation a signal for time invariant & time variant model. For simulation models optimal model order estimated by SBC method for entire data using the ARFIT toolbox. The results demonstrate gOPDC connectivity measure can remove the intermittent interactions between variables

Key Words: PDC, gPDC, OPDC, GOPDC

1 INTRODUCTION

Neuroscience has concept of brain connectivity which shows how cortical regions communicate & it is used to understand the organized behavior of different cortical regions. It represents the direction and strength of the information flow between cortical areas. During the recording of EEG, artifacts can be identified by technologist. Technologist should be skilled in identification & elimination of artifacts. The removal of artifact an important issue of EEG application in clinic. The problem of brain connectivity has been gaining more and more interest in the last years. There are different connectivity measures for an EEG signal. [15]

In this paper, I develop generalized version of OPDC to handle the numerical problem produces with different variance of amplitudes of signals. GOPDC is compared with the classical PDC and gPDC. This comparison done using simulated time-invariant and time-varying models These testing shows with time-frequency (T-F) connectivity maps Orthogonalized version of the PDC is where combined idea of orthogonalization and imaginary part of coherence functions. Effect of this combination is reduces volume conduction effects.

2 METHODS

2.1 MVAR Model

A time-varying N-variate AR process of order p can be represented as: [15]

$$\begin{bmatrix} x_1(n) \\ \vdots \\ x_N(n) \end{bmatrix} = \sum_{r=1}^p A_r(n) \begin{bmatrix} x_1(n-r) \\ \vdots \\ x_N(n-r) \end{bmatrix} + \begin{bmatrix} w_1(n) \\ \vdots \\ w_N(n) \end{bmatrix} \dots\dots\dots [1]$$

where w is a vector white noise, the matrices A_r are given by:

$$A_r(n) = \begin{bmatrix} a_{11}(r, n) & \dots & a_{1N}(r, n) \\ \vdots & \ddots & \vdots \\ a_{N1}(r, n) & \dots & a_{NN}(r, n) \end{bmatrix}$$

for $r = 1, \dots, p$ and A number of time-varying connectivity measures based on the following transformation of the MVAR parameter. In frequency domain ($A_r(n)$)

$$A(n, f) = I - \sum_{r=1}^p A_r(n) z^{-r} \Big|_{z=e^{j2\pi f}} \dots\dots\dots [2]$$

2.2 Dual Extended Kalman Filter (DEKF)

For nonlinear model kalman filter is extended so this filter is called extended Kalman filter (EKF) & For dual estimation Dual extended kalman filter (DEKF) is used. There is sequential & iterative methods are developed. There are two estimation state estimation & weight estimation.

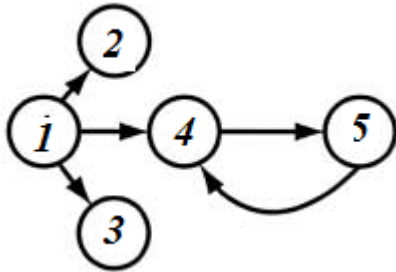
This filter is used to estimation of parameter i.e MVAR parameters ($A_r(n)$). [4]

2.3 Time-invariant Simulated Model

For testing integrity of connectivity analysis this model is designed by adding random interactions between channels

$$x(n) = Vy(n)$$

This equation used for simulation purposes in which $x(n)$ is the multichannel scalp EEG, v represents the lead field matrix and $y(n)$ models the lagged source time traces in the form of an MVAR process.[15]



$$y_1(n) = 0.95\sqrt{2}y_1(n-1) - 0.9025 y_1(n-2) + 10w_1(n)$$

$$y_2(n) = 0.5y_1(n-2) + 5w_2(n)$$

$$y_3(n) = -0.4 y_1(n-3) + w_3(n)$$

$$y_4(n) = -0.5y_1(n-2) + 0.25\sqrt{2}y_4(n-1) + 0.25\sqrt{2}y_5(n-1) + 1.5w_4(n)$$

$$y_5(n) = -0.25\sqrt{2}y_4(n-1) + 0.25\sqrt{2} y_5(n-1) + 2w_5(n) \dots \dots \dots [3]$$

where $w = [w_1 w_2 w_3 w_4 w_5]^T$ is a normally distributed white noise vector

2.4 Time-varying Simulated Model



$$y_1(n) = 0.59y_1(n-1) - 0.20y_1(n-2) + b[n]y_2[n-1] + c[n]y_3[n-1] + w[n]$$

$$y_2(n) = 1.58y_2(n-1) - 0.96 y_2[n-2] + w_2(n)$$

$$y_3(n) = 0.60y_3(n-1) - 0.91 y_3[n-2] + w_3(n) \dots \dots \dots [4]$$

2.5 Schwarz's Bayesian Criterion (SBC) for model order

$$SBC(p) = \ln(\sum e(p)) + \ln(L) \cdot p \cdot CH^2$$

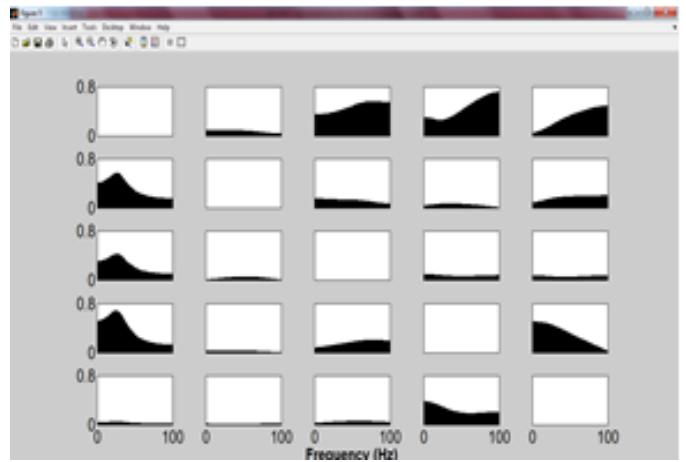
- P: Order of model
- CH: Number of channels
- L: Length of the time series signal

3. DISCUSSIONS AND INTERPRETATION OF THE RESULTS

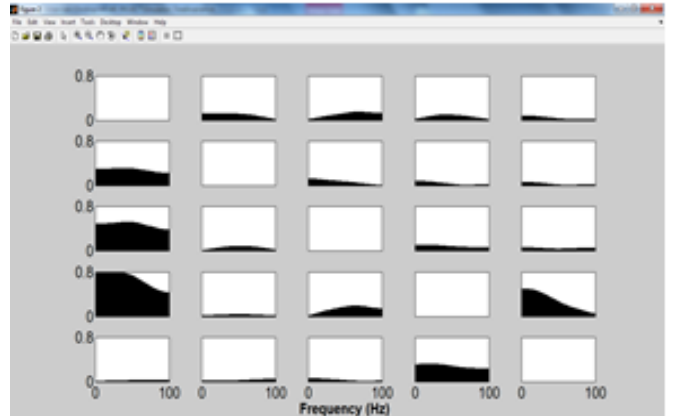
3.1 Time-invariant simulation

In time-invariant simulation an effect of channel 1 & effect of mutual sources are there in PDC.

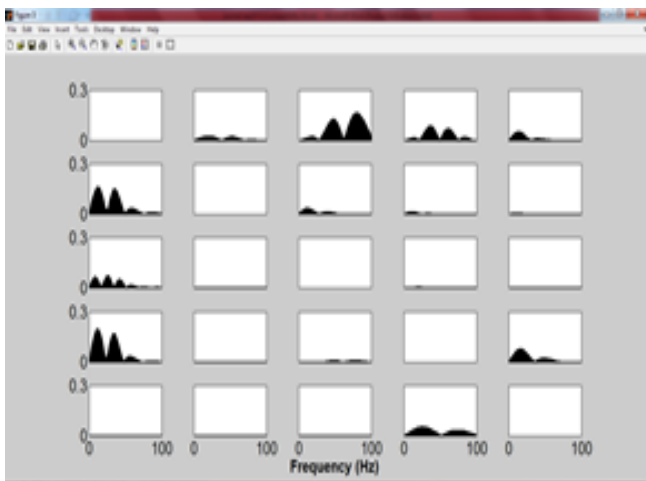
Non-zero values in fig shows there is no connectivity between channels & each channel relates with another expect itself



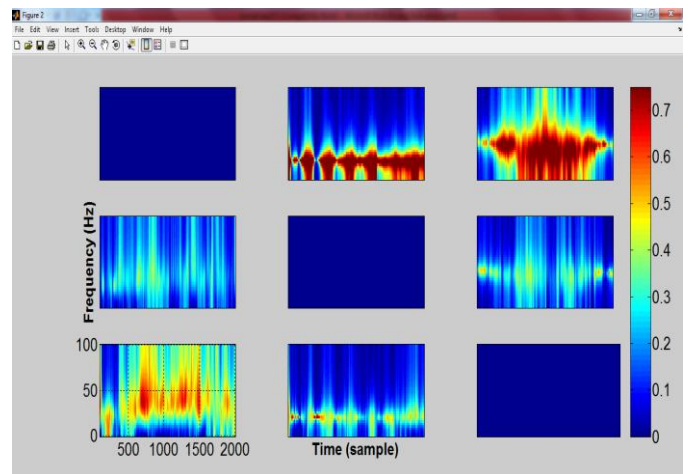
(a)



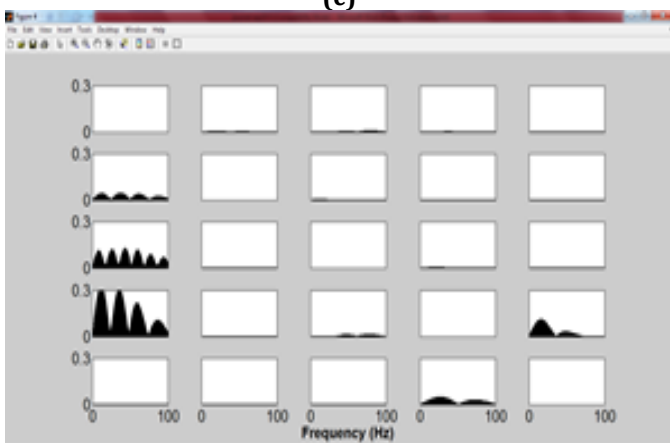
(b)



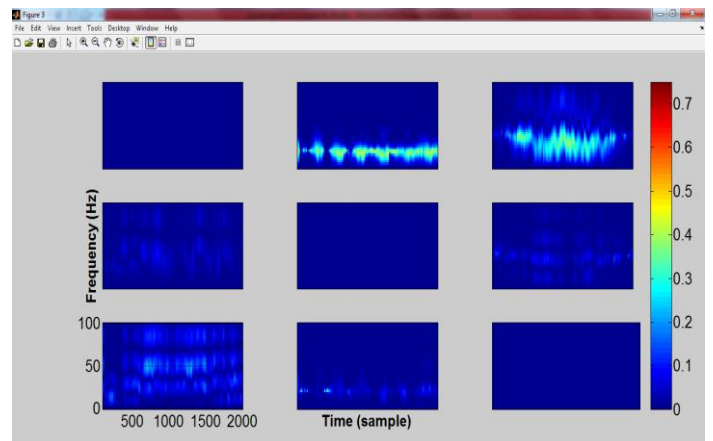
(a)



(b)



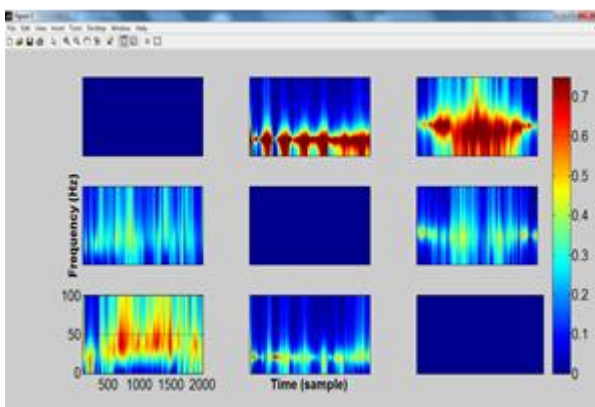
(c)



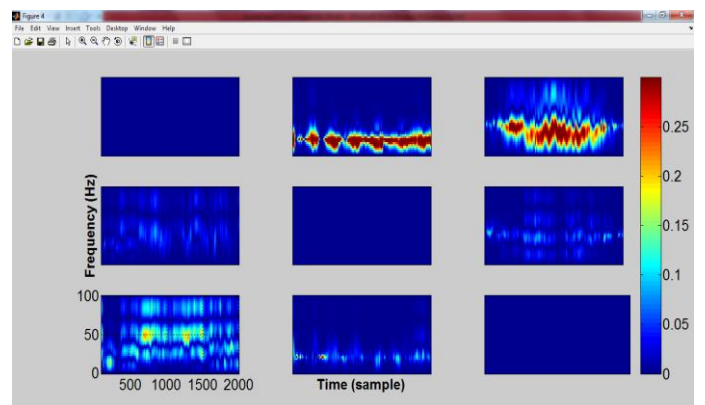
(d)

Fig-1: Diagrams of a)PDC, b)gPDC, c)OPDC and d)gOPDC

3.2 Time-varying Simulation



(a)



(b)

Fig-2: Diagrams of a)PDC, b)gPDC, c)OPDC and d)gOPDC

4. CONCLUSIONS

Comparison of different connectivity measures by simulation of time varying model & time in-varying simulation. From this simulation we can understand gOPDC can effectively remove the intermittent interactions between variables

In this paper the model order estimated by SBC(Schwarz's Bayesian criteria).The order is kept constant in overall simulation. In time varying simulation the connectivity values for gOPDC have smaller magnitude than the gPDC values (from color bar) i.e orthogonalization step attenuate the mutual sources & OPDC & gOPDC are superior methods than PDC & GPDC for connectivity measures.

ACKNOWLEDGEMENT

I would like to thanks Mrs.M.M.Pawar for her help through the technical discussions & who have contributed towards development of the template

REFERENCES

- [1]Tiejun Liu, Dezhong Yao "Removal of the ocular artifacts from EEG data using a cascaded spatio-temporal processing", *Sciencedirect*,Vol.83, PP.95-103,2005
- [2]A.R.Teixeiraa,A.M.Tomea,E.W.Langb,P.Gruberb,A.Martins da Silvaca "Automatic removal of high-amplitude artefacts from single-channel electroencephalogram", *Sciencedirect*,Vol.83, PP.125-138,2006
- [3] Samuel Boudet, Laurent Peyrodie, Philippe Gallois & Christian Vasseur "Filtering by optimal projection and application to automatic artifact removal from EEG", *Sciencedirect*,Vol.87,PP.1978-1992,2007
- [4] V.P. Oikonomoua, A.T. Tzallasa & D.I. Fotiadisa (2007)"A Kalman filter based methodology for EEG spike enhancement", *Sciencedirect*, Vol.85,PP.101-108,2007
- [5]Clemens Brunner , Muhammad Naeem, Robert Leeb, Bernhard Graimann & Gert Pfurtscheller "Spatial filtering and selection of optimized components in four class motor imagery EEG data using independent components analysis", *Sciencedirect*, Vol.28,PP.957-964,2007
- [6] Xinyi Yong, Rabab K. Ward & Gary E. Birch "Robust Common Spatial Patterns for EEG Signal Preprocessing", *International IEEE EMBS Conference*,Vol.30,PP.2087-2089,2008
- [7] L. Astolfi, F. Cincotti, D. Mattia, F. De Vico Fallani, A. Tocci, A. Colosimo, S. Salinari, M. G. Marciani,W. Hesse, H. Witte, M. Ursino, M. Zavaglia, and F. Babiloni "Tracking the Time-Varying Cortical Connectivity Patterns by Adaptive Multivariate Estimators", *IEEE transactions on biomedical engineering*,Vol.55,PP. 903-904,2008
- [8] Mikail Rubinov & Olaf Sporns "Complex network measures of brain connectivity: Uses and interpretations",*Sciencedirect*,Vol.83,PP.08-10,2009
- [9] Ales Prochazka, Martina Mudrova, Oldrich Vysata, Robert Hava, and Carmen Paz Araujo "Multi-Channel EEG Signal Segmentation and Feature Extraction", *Department of computer science*, Vol.16, PP.05-07,2010
- [10] Luca Faes, Alberto Porta, and Giandomenico Nollo "Testing Frequency-Domain Causality in Multivariate Time Series",*IEEE transactions on biomedical engineering*,Vol.57,PP.1897-1906,2010
- [11] Stefan Haufe,Ryota Tomioka, Guido Nolte, Klaus-Robert, and Motoaki Kawanabe "Modeling Sparse Connectivity Between Underlying Brain Sources for EEG/MEG", *IEEE transactions on biomedical engineering*,Vol.57,PP.1951-1963,2010
- [12] Lin Yang ,Christopher Wilke and Han Yuan "Electrophysiological Imaging of Brain Activity and Connectivity -Challenges and Opportunities",*IEEE transactions on biomedical engineering*,Vol.58, PP.1918-1931,2011
- [13] M. J. Brookes, M. Woolrich, H. Luckhoo, D. Price, J. R. Hale,M. C. Stephenson, G. R. Barnes, S. M. Smith, and P. G. Morris, "Investigating the electrophysiological basis of resting state networks using magnetoencephalography," *Proc. Natl. Acad. Sci. USA*, vol. 108, no. 40, pp. 16783-16788, 2011
- [14] Das, A. & Das, P. "Nonlinearity in EEG: Investigation by Surrogate Data Analysis", *Complexity international*, Vol.10,PP.01-05,2012
- [15] Amir Omidvarnia, Ghasem Azemi & Boualem Boashash "Measuring Time-Varying Information Flow in Scalp EEG Signals:Orthogonalized Partial Directed Coherence", *IEEE transactions on biomedical engineering*,Vol.61,PP.680-693,2014
- [16] Dominic Heger, Emiliyana Terziyska & Tanja Schultz "connectivity based feature-level filtering for single-trial EEG BCIS",*IEEE transactions on biomedical engineering* ,Vol.13,PP.2083-2085,2014