

Simulation and Design of Solar Input EZ-Source Inverter System.

¹Vinay Y. Somwanshi, ²Syed A. Naveed

¹Student, Department of Electronics and Telecommunication, MGM's JNEC Aurangabad, Maharashtra, India

²Professor, Department of Electronics and Telecommunication, MGM's JNEC Aurangabad, Maharashtra, India

Abstract: *Z-Source inverters are used mainly for buck-boost energy conversion with the help of passive elements. In Z-source inverter topology, LC impedance network is used to couples the source and the inverter to achieve voltage boost and inversion. Embedded EZ-Source inverter and Z-Source inverter can produce the same gain. Input to the Embedded EZ-Source inverter can be obtained from solar cell. The ripple content in the output voltage of solar cell is filtered and pure DC is given to the three-phase inverter which converts DC in to three-phase balanced AC. The output of the Embedded EZ Source inverter is used to control the harmonics present in the load.*

The limitations of the conventional Z-source inverter can be overcome by using Embedded Z-source inverters. It can produce smoother current and increase voltage level across the Z-source and it has low harmonic distortions (THD). Simulations are carried out using MATLAB-SIMULINK. Hardware implementation and Microcontroller programming can be done in the lab.

Keywords: *EZ-source inverters, voltage boost, Z-Source inverter and Pulse Width Modulation (PWM), Total Harmonic Distortion (THD).*

INTRODUCTION:

The circuit which is used to convert the direct current (DC) input signals into alternating current (AC) output signal is called as inverter.

Traditionally there exist two types of inverters namely Voltage Source Inverter, Current Source Inverter [10]. Voltage source inverter is a buck (step-down) inverter for dc-to-ac power conversion and the voltage source converter is a boost (step-up) rectifier for ac-to-dc power conversion [6] [10]. Current source inverter is a boost inverter for dc-to-ac power conversion and a buck rectifier (or buck converter) for ac-to-dc power conversion [6] [10]. Both the V-source converter and the I-source converter have the common problem that they can operate either a boost or buck converters and cannot be a buck-boost converter.

The limitations of the traditional voltage source and current source converters can be eliminated by introducing Z-source inverter [6]. Z-Source inverter utilize LC impedance network which performs both buck-boost energy conversions [1] [2] [4]. It can be used in implementing dc-to-ac, ac-to-dc, ac-to-ac, and dc-to-dc power conversion. The Z-source network boosts the input voltage level for inverter and also provides filtered output. Thus this technique improves efficiency of inverter.

The structure Z-source consist two inductors and two capacitors arranged in X shape for buck boost operation in single stage conversion. To avoid chopping in source current an additional LC filter is placed before diode therefore the cost of system would rise and due to addition of LC filter the system becomes more complex. In the case of EZ source inverter, source is places in series with inductors which smoothens the source current and

chopping currents get filtered without any additional LC filter [1] [3].

For system design of EZ-Source inverter two PV panels are required. These PV panels work as a dc source which embedded within LC impedance network. The two DC source generate varying DC voltages whose values are depend on atmospheric conditions Voltage and current filtering can be done by using LC components.

1. Z-SOURCE INVERTER

Fig.1. shows the circuit of Z-source inverter where the input dc source and three-phase inverter bridge is connected by X-shape network which is LC impedance network. Any two switches from the same phase-leg of inverter can be turned on safely to introduce a shoot-through state which is nothing but the short-circuit state. This condition can be brought by addition of LC impedance network. The inductive element ($L1$, $L2$, or both) used to limit the current paths from dc front-end. Due to insertion of shoot-through state, the Z-source inverter can provides voltage-boosting capability. Consider the inverter-state equations during shoot-through and non shoot-through states, expressed by (1) and (4) with a balanced network assumed ($L1 = L2 = L$ and $C1 = C2 = C$). These equations are used to derive the gain of inverter.

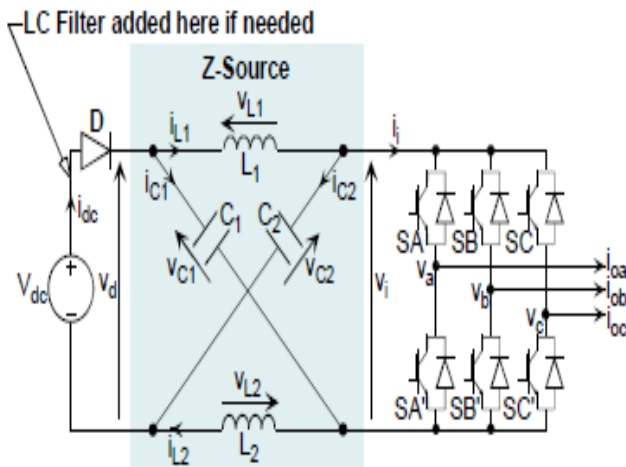


Fig-1: Z-source inverter

Conditions of Shoot-Through state:

($S_x = S_{x1} = ON$, $x = A, B$, or C ; $D = OFF$)
 $v_L = VC$; $v_i = 0$; $v_d = 2VC$; $v_D = V_{dc} - 2VC$ ---- (1)

$i_L = -I_c$; $i_i = i_L - i_C$; $i_{dc} = 0$ ---- (2)

Conditions of Non Shoot-Through state:

($S_x \neq S_{x1}$, $x = A, B$, or C ; $D = ON$)
 $v_L = V_{dc} - VC$; $v_i = 2VC - V_{dc}$; $v_d = V_{dc}$; $v_D = 0$ ---(3)
 $i_{dc} = i_L + i_C$; $i_i = i_L - i_C$; $i_{dc} \neq 0$ ---- (4)

The following expressions are for VC capacitive voltage, peak dc-link voltage \hat{v}_i , and peak ac output voltage v_x .

$VC = (1 - T_0/T)/(1 - 2T_0/T) * V_{dc}$ ----(5)

$\hat{v}_i = V_{dc} / (1 - 2T_0/T) = BV_{dc}$ ----(6)

$v_x = M \hat{v}_i / 2 = B(M V_{dc} / 2)$ ----(7)

where T_0/T denotes the shoot-through ratio ($T_0/T < 0.5$) per switching period, M is the modulation index used for traditional inverter control, and B is boost factor given by expression $B = 1/(1 - 2T_0/T)$.

2. EMBEDDED Z-SOURCE INVERTER

Fig.2. shows the circuit of Embedded EZ-Source inverter. It consist $L1$ and $L2$ inductive elements and $C1$ and $C2$ capacitive elements which forms LC impedance network.

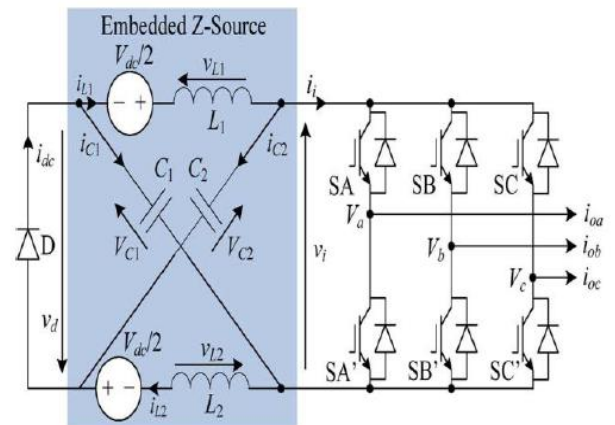


Fig-2: EZ-source inverter

Two DC sources embedded within the X-shaped LC impedance network. In the case of voltage type EZ-source inverter inductive elements $L1$ and $L2$ used for filtering the currents and in case of current type EZ-source inverters capacitive elements $C1$ and $C2$ used for voltage filtering in current type EZ-source inverters keeping the voltage or current gain of the inverter constant. The input

DC can be taken from the solar cell given to the Z-source. The filtered, ripple free, pure DC given to the three phase inverter which converts pure DC into three phase balanced AC.

3. EXPERIMENTAL RESULTS

The simulation of proposed system is done in MATLAB SIMULINK. The output voltage from two DC sources fed to the Z filter of Embedded EZ-Source Inverter. The filtered DC output from Z filter is given to the Embedded EZ-Source Inverter which converts pure DC into three phase balanced AC.

The simulation circuit diagram of Embedded EZ-Source inverter is shown in fig.3. The triggering pulses for switches of Embedded EZ-Source inverter is shown in fig.4. The line current waveform is shown in fig.5, fig.6 and fig.7 represents line voltage waveforms.

The output from the Embedded EZ-Source Inverter is given to the induction motor which is asynchronous machine. Three phase induction motor is taken as a load. Fig.8 shows the plot of rotor speed of induction motor with respect to time. It represents the speed of induction motor increases and settles down above 1600 RPM (Revolution per minute). For calculation of total harmonic distortion FFT analysis for current of the system is taken. It shows that THD value is 3.93% shows in fig.9. Thus total harmonic distortion is low in Embedded EZ-Source inverter system.

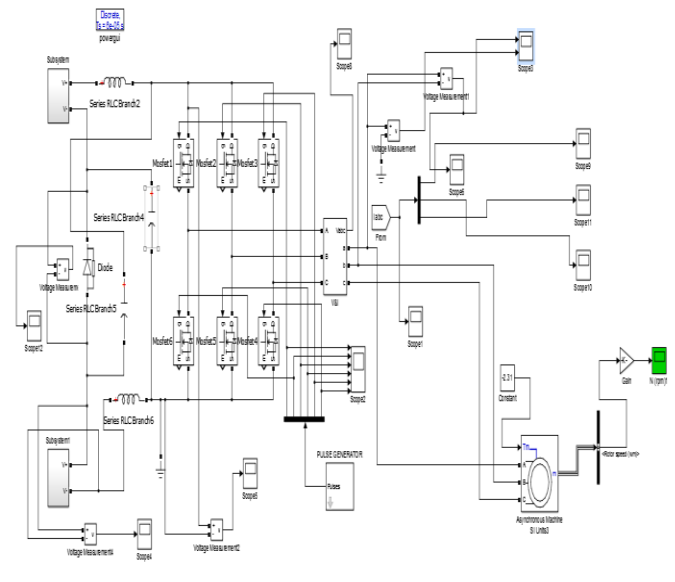


Fig-3: Simulation circuit diagram

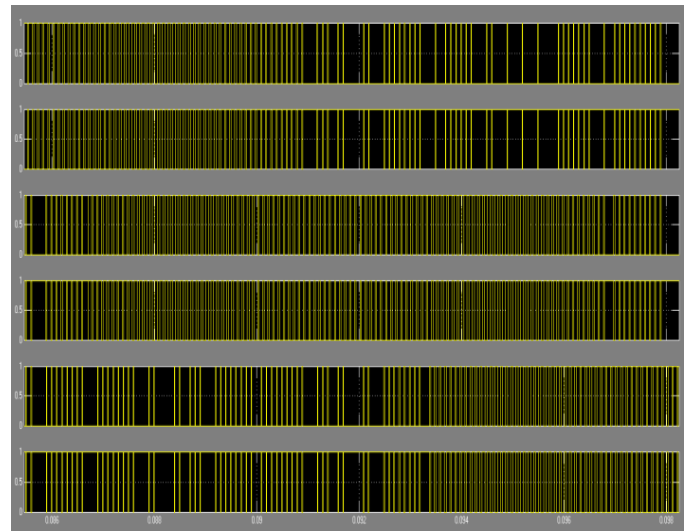


Fig-4: Triggering pulses

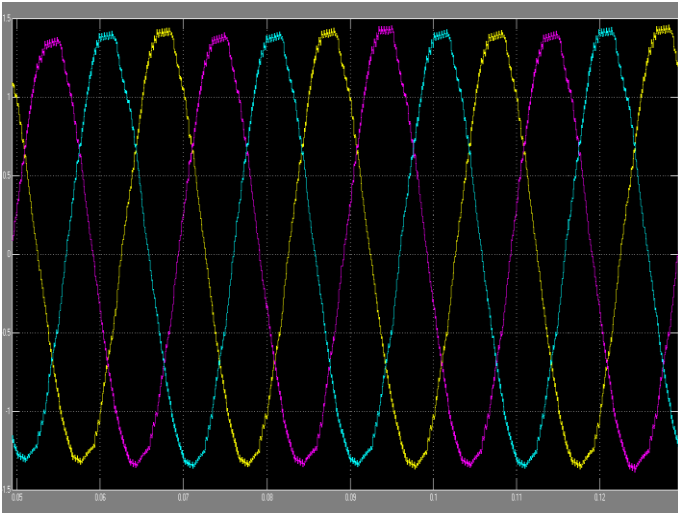


Fig-5: Line current waveform

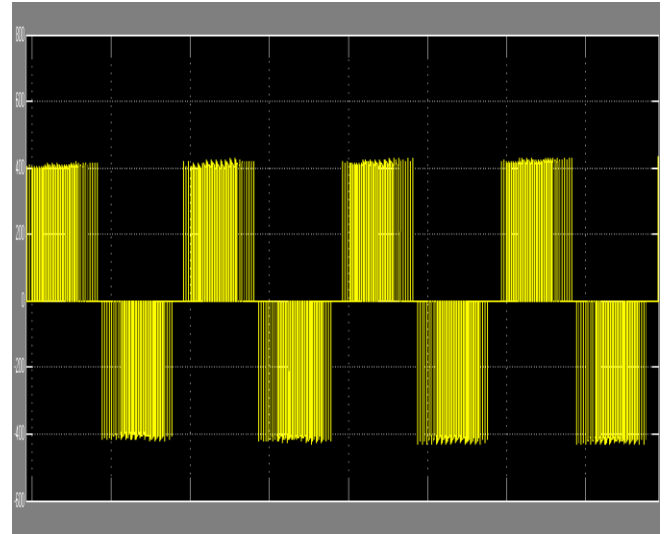


Fig-7: Phase to Phase voltage waveform

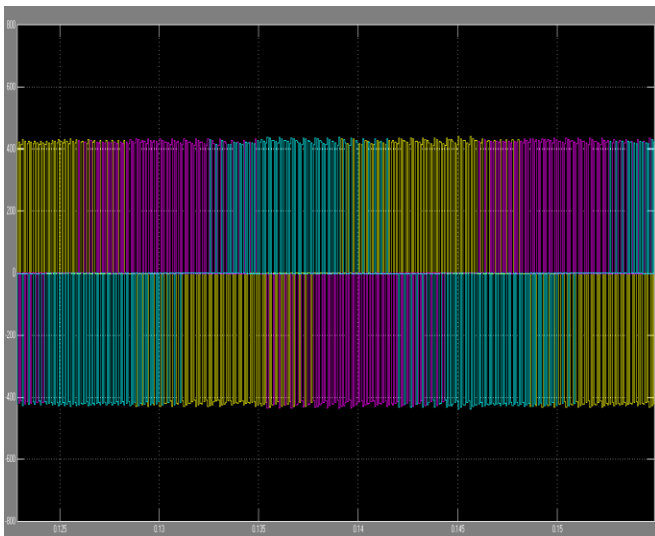


Fig-6: Line voltage waveform

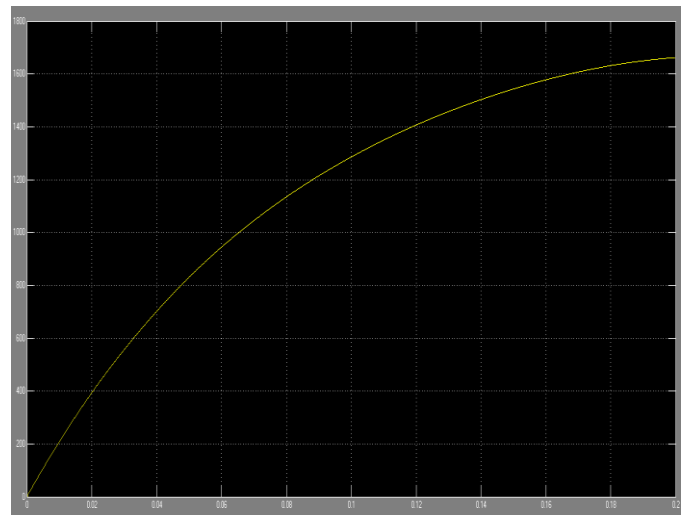


Fig-8: Rotor speed

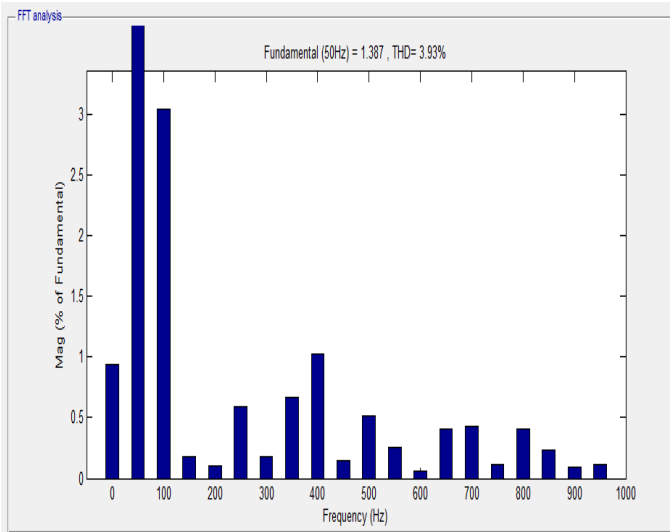


Fig-9: FFT analysis and total harmonic distortion (THD)

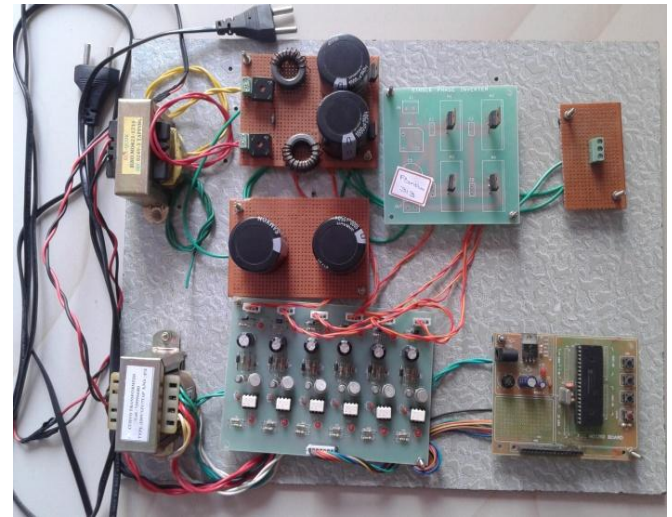


Fig-10: Proposed system hardware

4. HARDWARE SETUP OF EZ-SOURCE INVERTER

Fig.10 shows the complete hardware setup of EZ-source inverter. It consist power supply unit, Z-source impedance network, induction motor as a load, driver circuit for inverter and 6 switches three phase inverter. Projections for solar input are provided in the system. DC Input for the Z-source is provided by the solar plates, filtered DC from Z-source fed to three phase inverter. PIC microcontroller is used to provide triggering pulses for three phase inverter through driver circuit. Driver circuit amplifies the low level voltage input pulses from PIC microcontroller into high voltage level pulses. Three phase inverter generates balanced AC signal to run induction motor.

5. CONCLUSION

The simulation of EZ-Source inverter system is carried out in MATLAB SIMULINK software. From the experimental results are presented in this paper, we observed that the given system provides voltage boosting and current filtering using impedance network also it has advantages of reduced harmonic distortions of about 3.93%. Its hardware implementation has been done and results are obtained by using PV panels at input and motor load at the output. Thus EZ-source inverter has great advantages over current source and voltage source inverters.

6. ACKNOWLEDGMENT

I wish to thank my project guide Dr. S. A. Naved for providing me a great technical support with his knowledge and experience also I would like to express my gratitude to my colleagues for their kind co-operation and encouragement which help me in completion of this project.

7. REFERENCES

- [1] S. Kamalakkannan, S. Deve gowda, "Digital simulation of renewable energy source controlled ez-source Inverter system", 2012 IEEE.
- [2] P.Kannan, "Harmonic Analysis and Design of Embedded Z-Source Inverter for Induction Motor Drives", Volume-4 Number-1 Issue-14 March-2014.
- [3] K.Spandana, G.N.Sreenivas, "Performance analysis of partially parallel Embedded z (ez) - source inverter with reduced switches fed im drives", volume- 1, issue-3, jan.-2014.
- [4] Blaabjerg, Frede; Loh, Poh Chiang; Gao, F., "Embedded EZ-Source Inverters", (pp. 1-8). IEEE. 10.1109/08IAS.2008.300.
- [5] N.Gurusakthi, R.Sivaprasad, "Performance Enhancement of EZ-Source Inverter Using Induction Motor", Volume 4, Issue 4, April-2013.
- [6] Fang Zheng Peng, "Z-Source Inverter", vol. 39, no. 2, march/april 2003.
- [7] S. Rajakaruna, *Member, IEEE* and Y. R. L. Jayawickrama "Designing Impedance Network of Z-Source Inverters"
- [8] https://en.wikipedia.org/wiki/Z-source_inverter.
- [9] "3-Phase Voltage Source Inverter with Square Wave Output".pdf, Version 2 EE IIT, Kharagpur
- [10] Aaron VanderMeulen and John Maurin "Current source inverter vs. Voltage source inverter topology".pdf.

8. AUTHORS BIOGRAPHIES



Vinay Y. Somwanshi

He is an Electronics and Telecommunication Engineer. He received his B.E. degree in Electronics and Telecommunication engineering from Shreeyash college of Engineering and Technology, BAMU, Aurangabad, Maharashtra in 2013 and currently pursuing M.E. (Electronics Engineering) from MGM's JNEC College, BAMU, Aurangabad, Maharashtra, India.
E-mail: vinay.y.somwanshi@gmail.com



Syed A. Naveed

His areas of interest are power system, power quality, power electronics and renewable He is Professor in J. N. Engineering College, Aurangabad (M.S.), India. He has completed B.E. (EEP), M.E. (EPS), Ph.D. (EEE) and LL.B. (Law) in 2000, 2001, 2009 and 2015 respectively. He has more than 12 years of experience in technical field at various levels in academics. He has 34 national/ international technical publications. He is Fellow Chartered Educator from University Euro American Consortium, Madrid, Spain, 2013. He is Chartered Engineer with IE and Chartered Industrial Environmentalist with SES. He has been presented "Rajiv Gandhi Excellence Award" on 24-08-2013 and conferred with "The Best Citizens of India Award" in 2013. He is life member of various 77 national/international professional bodies related to technical, industry, management, legal, environment, medicine and social fields, energy sources.
E-mail: sa_naveed01@rediffmail.com