

Seismic Evaluation of Base Isolated Overhead Water Storage Tank

¹Arfat Rafiq, ²Mir Tabish Altaf, ³Shahid Rafeeq, ⁴Dr. Mohammad Umair

¹M Tech student, Department of Civil Engineering, Jamia Millia Islamia, New Delhi, India

²M Tech student, Department of Civil Engineering, Jamia Millia Islamia, New Delhi, India

³B E student, Department of Civil Engineering, Jadavpur University, Kolkata, India

⁴Assistant Professor, Department of Civil Engineering, Jamia Millia Islamia, New Delhi, India

Abstract - This paper presents the seismic analysis of reinforced concrete overhead water tank. An overhead water tank is analyzed for seismic zone V as per IS 1893: 2016 using SAP 2000 software. Non-linear time history analysis has been conducted to evaluate the behavior the OWT (Overhead Water Tank) at different water levels under the base fixed condition and base isolated conditions. The main parameters consider in this seismic analysis of OWT are lateral displacement, base shear and time period. From the analysis it is found that the response of the tank depends upon the support conditions, type of the quake, depth of water level in the tank and shows a complex behavior. The tank with fully filled gives maximum displacement in both the cases, maximum base shear and maximum time period. Tank with 75% water gives less displacement as compared to 50% water that is mainly due to strong sloshing effects in case of tank containing 75% water. Base isolation of overhead water tank does not give us rigid body motion of superstructure. There is a large relative displace at the staging levels.

Key Words: OWT (Overhead Water Tank), Earthquake, SAP 2000, Time history analysis, Displacement, Time periods, Base shear.

1. INTRODUCTION

Elevated reservoirs are considered important structures that must continue to function as soon as a large earthquake happens, among other reasons to aid in relief operations and stop fires from spreading. The reservoirs are raised by creating a circular shaft or by staging. The columns and horizontal braces of the structural framework used for staging normally transfer the load to the foundation. Reinforced concrete elevated water tanks were proven to perform poorly under jolts of earthquakes. Previous earthquakes damaged the supports of multiple tall water tanks despite their moderate magnitude and large epicentral distances. Because of this, the columns and braces are essential components of such structures and are built to withstand loads from wind and earthquakes.

Expected seismic load is dependent on a number of factors, including the area's seismicity, the kind of soil, the structure's dynamic properties, etc. The structure's natural time period and damping, which have a significant

impact on the anticipated seismic load, are its dynamic properties. The seismic code IS: 1893(Part I): 2016 states that more than 60% of India is earthquake-prone. Elevated water tanks' seismic analyses differ from those of other structures in two ways:

- (i) Other constructions are not subject to the sloshing effects that occur when the fluid inside the tank exerts hydrodynamic force on the tank walls during seismic excitation.
- (ii) Elevated liquid storage tanks require more design seismic forces than other structures because they are less ductile and redundant, necessitating rigorous seismic analysis and exact determination of the design earthquake load.

It has been determined to implement the "Indian Institute of Technology, Kanpur-Gujarat State Disaster Management Act" because the Indian Standard (IS) code for seismic design does not have a provision on the seismic design of OWTs. (IITK-GSDMA 2007) guidelines for the seismic design of overhead liquid storage tanks (Moslemia et al. 2019).

1.1 SPRING-MASS IDEALIZATION OF OVERHEAD WATER TANK

The idealized two DOF systems for OWTs with and without water is composed of the impulsive mode and convective mode, as well as a single DOF. There won't be convective mode in the empty tank. Figure 1.4 illustrates the OWT's idealized structural design. When an OWT with enough free surface and water for the entire height is subjected to ground acceleration from an earthquake, the tank wall and water will both be excited horizontally. The water present in the tank's lower container will function as a mass that is rigidly attached to the tank wall during the earthquake excitation. It is known as impulsive mass. The sloshing effects will have an impact on the water in the upper part of the tank, and this mass is known as convective mass. Impulsive hydrodynamic pressure and convective hydrodynamic pressure, respectively, are terms used to describe the hydrodynamic pressure caused by impulsive mass and convective mass. When analyzing the modal behavior of filled tanks, a two-DOF system is split into two

single-DOF systems, and the responses of the two systems are computed independently. Using the SRSS combination rule, they are combined to obtain the entire response.

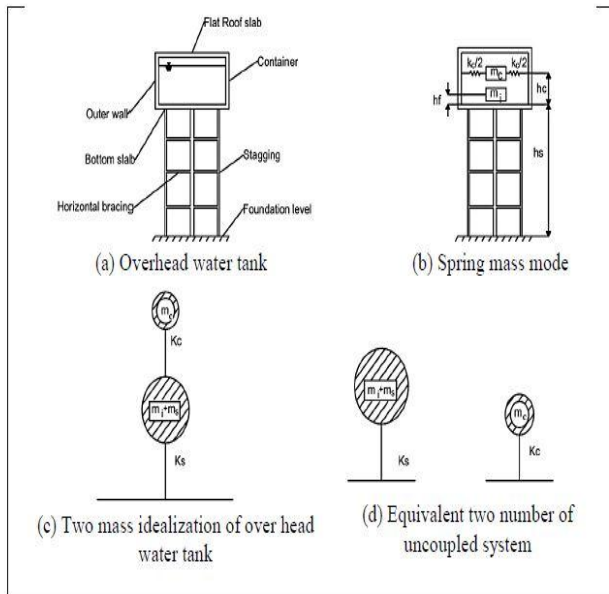


Figure 1: Structural idealization of an overhead water filled tank.

1.2 BASE ISOLATION

Base isolation systems' principal purpose is to separate the superstructure from the substructure, which is mostly exposed to seismic excitation. As a result, some of the energy that would have been delivered to the superstructure will be lost. The foundation slab's mass and the isolation devices' lateral stiffness must be fixed as necessary. When isolation is offered, displacement at the level of the isolation devices will be extremely high, and the behavior of the superstructure will appear to be that of a rigid body. However, this rigid movement is questionable in the case of a highly elevated water tank since the bulk is concentrated at the top. This study's primary goal is to examine how elevated water tanks function during earthquakes, both with and without base isolation, and how that performance varies over a fundamentally natural time span.

2. OBJECTIVES

In the absence of soil structure interaction, an elevated reservoir is modeled as having a fixed base. We'll analyse the elevated reservoir with its fluctuating water level. The finite element approach will be used to analyse the raised storage reservoir because it is the most effective analytical technique currently available. Any combination and type of loading can be analyzed using this method. In light of these realities, the ensuing goals have been proposed. To study the dynamic response of elevated water reservoir.

1. By considering variations in water levels, such as for tank empty condition, 25%, 50%, 75% water levels, and for full tank condition, the elevated reservoir in linked condition (fixed base) will be analyzed for a Bhuj earthquake using SAP2000.
2. In order to determine the seismic behavior under all the aforementioned situations, SAP2000 will also be used to analyze the elevated reservoir in an uncoupled condition (base isolated using a rubber base isolator).

In order to compare the maximum base shear, maximum displacement, relative displacement, and time for all the aforementioned examples in both coupled and decoupled settings.

3. STRUCTURAL MODELLING AND ANALYSIS

Table -1: Dimensions of Elevated Reservoir

Capacity (m ³)	9000m ³
Total height of tank(m)	29m
Diameter of tank vessel(m)	12m
Depth of vessel(m)	8m
Diameter at bottom of vessel(m)	8.60m
Diameter at ground level(m)	11.00m

Table -2: Height of Staging Beams w.r.t Ground Level.

Components	Height w.r.t ground (m)
Staging beam 1	5
Staging beam2	10
Staging beam 3	15
Top ring beam	20

Table -3: Member Properties

Column	700mmx700mm
Staging beams	600mmx500mm
Top ring beam	600mmx400mm
Top container dimensions	
Top slab thickness	200mm
Bottom slab thickness	250mm
Thickness of wall of vessel	250mm

Table -4: Seismic Properties

Properties	Values
Seismic Zone	V
Zone factor	0.36
Soil type	II
Response reduction factor	2.5
Importance factor	1.5

Table -5: Material Properties

Grade of concrete	M30 & M25
Grade of Rebar	Fe550, Fe500

Table -6: Properties of Isolator

Type of isolator	Lead Rubber Bearing (LRB)
Effective Stiffness in vertical direction (U1)	18073.750 N/m
Effective stiffness in lateral direction (U2)	1087.157 N/m
For Nonlinear Analysis	
Stiffness (each column)	5561.2N/m
Yield strength	54004.6N

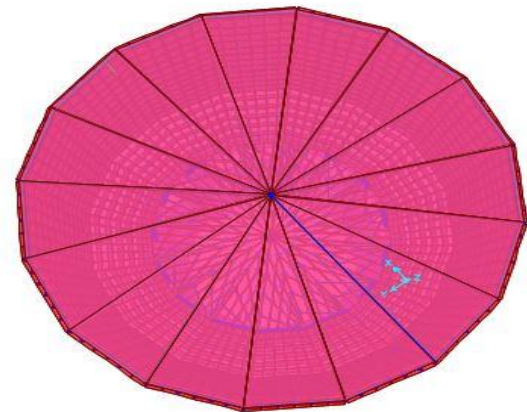


Figure 3: Plan of overhead water tank.

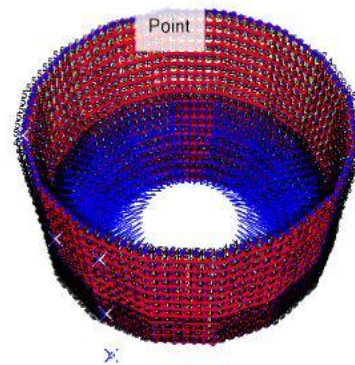


Figure 4: Assigning water pressure(25%full)

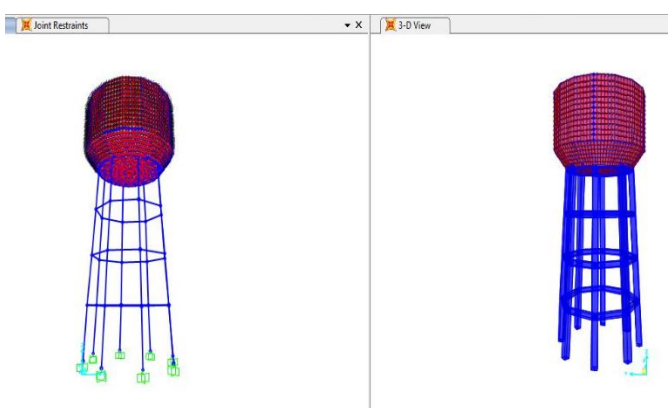


Figure 2: Model of overhead water tank with base Fixed

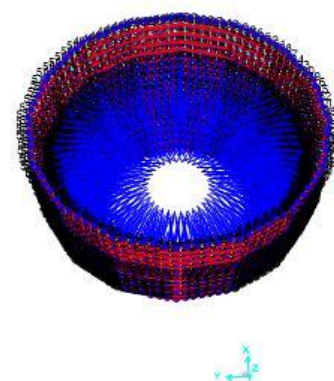


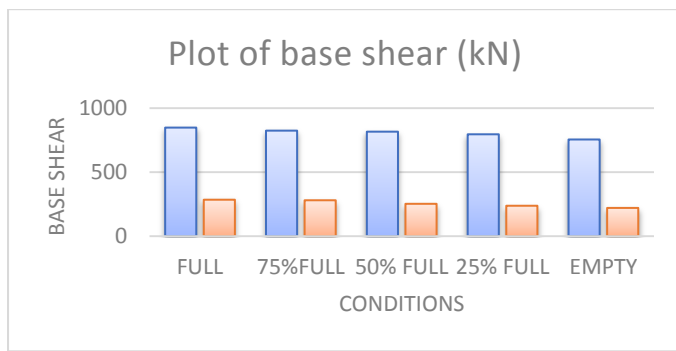
Figure 5: Assigning water pressure(75%full)

4. STRUCTURAL MODELLING AND ANALYSIS

4.1 BASE SHEAR (kN)

Table -7: Maximum Base shear in X-Direction

Base shear (KN)	FULL	75% FULL	50% FULL	25% FULL	EMPTY
FIXED	847.6	823.9	815.9	795.3	754.7
ISOLATED	284.2	279.8	252.1	236.9	220.0



Graph1: Plot between base shear and water level in tank

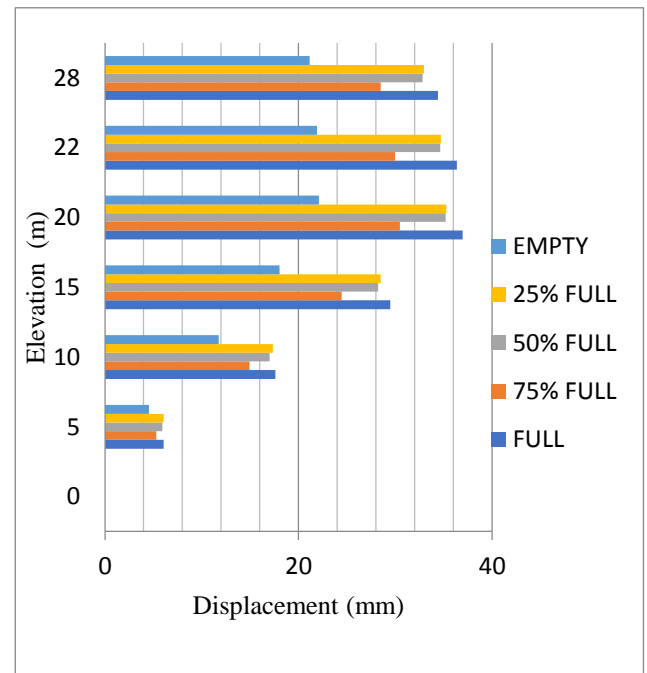
4.2 MAXIMUM DISPLACEMENT (mm)

4.2.1 Base fixed

Maximum displacement is the measurement of the lateral displacement that can occur along an elevation when a lateral load is applied. Time history analysis is used to determine the elevated tank's maximum displacement in the X direction.

Table -8: Maximum displacement in the X direction

Joint no.	Elevation m	Full mm	75% full mm	50% full mm	25% full mm	Empty mm
4	28	34.4	28.5	32.8	32.9	21.2
3	22	36.4	29.9	34.6	34.7	21.9
2	20	36.9	30.5	35.2	35.2	22.1
190	15	29.5	24.5	28.2	28.5	18.1
182	10	17.6	14.9	17.1	17.3	11.7
174	5	6.1	5.3	5.9	6.1	4.5
1	0	0	0	0	0	0

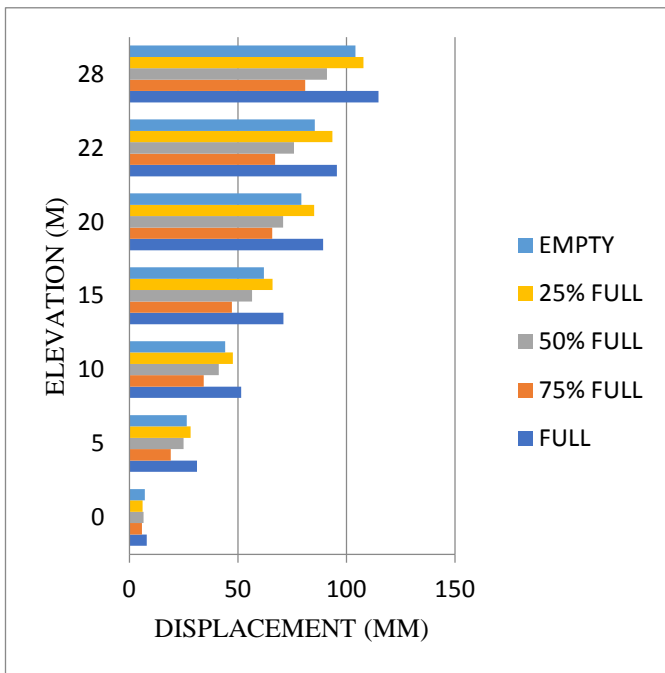


Graph 2: Plot of Maximum Lateral Displacements (mm) versus elevations

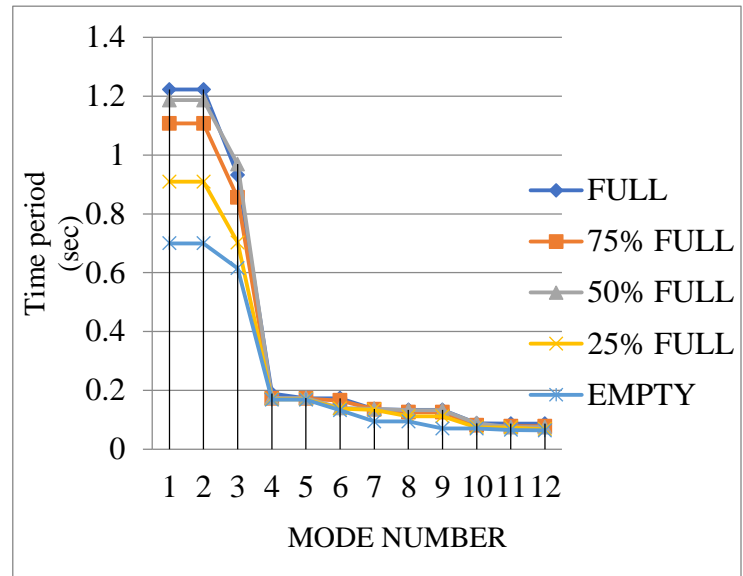
4.2.2 Base Isolated

Table -9: Maximum displacement in the X direction

Joint no.	Elevation (m)	Full mm	75% full mm	50% full mm	25% full mm	Empty mm
4	28	114.8	81.1	91.3	107.8	104.1
3	22	95.6	67.2	75.9	93.6	85.4
2	20	89.3	65.7	70.9	85.1	79.2
190	15	70.9	47.2	56.5	65.9	61.9
182	10	51.5	34.2	41.2	47.6	44.1
174	5	31.1	19.1	25.1	28.2	26.4
1	0	8.0	5.7	6.9	6.0	7.1



Graph 3: Plot of Maximum Lateral Displacements (mm) versus elevations



Graph 4: Time period of base fixed elevated water tank

4.3 TIME PERIOD (mm)

4.3.1 Base Fixed

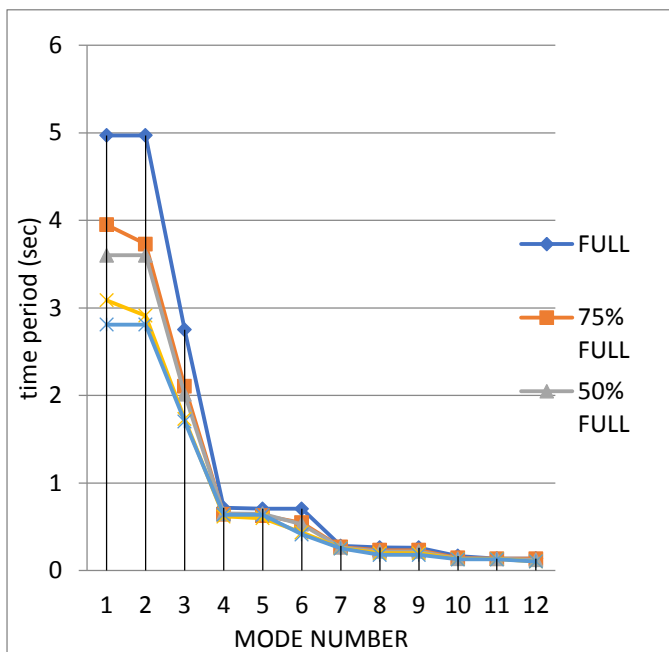
Table -10: Time period (sec) for fixed base at different filled conditions

MODE SHAPES	FULL	75% FULL	50% FULL	25% FULL	EMPTY
1	1.222367	1.106954	1.186606	0.909437	0.699998
2	1.222367	1.106954	1.186606	0.909437	0.699998
3	0.932209	0.85528	0.969135	0.702328	0.614996
4	0.18888	0.172141	0.174282	0.169879	0.16821
5	0.173292	0.172125	0.174266	0.169863	0.168194
6	0.173276	0.165701	0.140213	0.13839	0.13259
7	0.136432	0.135877	0.136656	0.134185	0.094457
8	0.133322	0.125749	0.132711	0.111601	0.094453
9	0.133307	0.125748	0.132697	0.111597	0.070637
10	0.088029	0.08056	0.088308	0.074178	0.070541
11	0.086878	0.07797	0.074685	0.07412	0.065851
12	0.086877	0.077957	0.074625	0.067512	0.063705

4.3.2 Base Isolated

Table -11: Time period (sec) for base isolated tank at different filled conditions

MODE SHAPES	FULL	75% FULL	50% FULL	25% FULL	EMPTY
1	4.969896	3.949627	3.601914	3.08715	2.809277
2	4.96971	3.729102	3.601657	2.912267	2.808933
3	2.751693	2.104742	2.012307	1.731251	1.704274
4	0.717368	0.642221	0.650298	0.618473	0.637443
5	0.705939	0.628704	0.64931	0.598503	0.636513
6	0.704874	0.546941	0.528231	0.435632	0.413725
7	0.281336	0.268785	0.265608	0.255758	0.252149
8	0.263346	0.232845	0.218478	0.197491	0.178578
9	0.262277	0.231853	0.218435	0.196742	0.178486
10	0.166644	0.143799	0.13506	0.132462	0.127978
11	0.136909	0.135149	0.134634	0.131706	0.127385
12	0.136502	0.134812	0.122312	0.10436	0.104484



Graph 5: Time period of base isolated elevated water tank

3. CONCLUSIONS

Utilizing the technique of Time history Analysis, the seismic performances of OWTs subjected to the Bhuj earthquake have been examined. Different seismic reaction characteristics, such as base shear, maximum displacement, time period, etc., were considered. The resulting results are as follows, which are presented.

- In the case of the basic fixed condition, the time period is maximum for a fully filled above water tank and asynchronous for other circumstances, such as when the tank is only 75% full. This may be mostly because the 75% full tank has severe sloshing effects.
- When compared to a base fixed elevated reservoir, the time period is longer in the case of a base separated overhead water tank. The time period likewise grows with the depth of the water level in the base-isolated elevated water tank.
- In the case of a base-fixed elevated reservoir, the base shear rises with tank depth; it is maximum for fully filled tanks and minimum for empty ones.
- Although the base shear can be reduced by utilizing a base isolator, the behavior is still comparable to that of a base-fixed elevated reservoir, i.e., maximal for a fully filled state and decreasing with a drop in the tank's water level.

- In the case of a fixed support system, the location where the supporting system joins the container experiences the most displacement.
- In the case of a base-isolated overhead water tank, the system's greatest displacement occurs at the roof level, with maximum displacement occurring in the full condition and decreasing percentages of 25%, 50%, and 75% in that order.
- No stiff body movement was seen in the base isolated OWT under earthquake excitation.

REFERENCES

- [1] Sanket Nimbekar et al 2021 IOP Conf. Ser.: Mater. Sci. Eng. 1197 012016 "Seismic Response Control of Elevated Water Tank using Base Isolation: A Review. Young, The Technical Writer's Handbook. Mill Valley, CA: University Science, 1989.
- [2] Nayak et al 2012, "Seismic response of partially filled rectangular liquid tank", Fourth International Congress on Computational Mechanics and Simulation", 9- 12 Dec 2012, Hyderabad, India. K. Elissa, "Title of paper if known," unpublished.
- [3] F. Omidinasab et al KSCE Journal of Civil Engineering (2012) 16(3):366-376, Seismic Response Evaluation of the RC Elevated Water Tank with Fluid Structure Interaction and Earthquake Ensemble.
- [4] B. Waghmare and N. M. Kanhe, "Seismic Response of Isolated Liquid Storage Tanks with Elastomeric Bearings (2013)."
- [5] Ankesh Birtharia and Sarvesh K Jain "SEISMIC RESPONSE OF ELEVATED WATER TANKS: AN OVERVIEW", International Research Journal of Engineering and Technology (IRJET) e-ISSN: 2395-0056 Volume: 02 Issue: 04 | July-2015.
- [6] S.C. Potnis et al, "Earthquake response of the liquid storage tank with various isolation systems (2013)." International Journal of Application or Innovation in Engineering & Management (IJAEM) ISSN 2319 - 4847 Volume 2, Issue 11, November 2013.
- [7] Mrs. Meet Motwani, "Vibration Control of Elevated Water Tank Using Different Seismic Control Techniques - A Review", International Journal of Latest Engineering Research and Application (IJLERA) ISSN: 2455-7137 Volume - 02, Issue - 05, May - 2017, PP - 58-63.
- [8] Nasser Dine et al, "International Journal of Innovative Technology and Exploring Engineering (IJITEE) ISSN: 2278-3075, Volume-9 Issue-9, July 2020.

- [9] Suyash Nerkar¹ et al, "Seismic behavior of elevated storage reservoir by finite element method", International Journal of Advanced Technology in Engineering and Science -Vol. No. 4 Special issue no. 01, March 2016. 41



MIR TABISH ALTAF,
MTech (Earthquake Engineering)
Dept. of Civil Engineering,
Jamia Millia Islamia, New Delhi.

- [10] J Ahmet H. Deringol & Huseyin Bilgin 2018, 'Effects of the isolation parameters on the seismic response of steel frames', Earthquakes and Structures, An Int'l Journal, vol. 15, no. 3.



SHAHID RAFEEQ,
B E (Civil Engineering)
Dept. of Civil Engineering,
Jadavpur university, Kolkata.

- [11] Anil K. Chopra 2012, 'Dynamics of Structures', Fourth Edition, Dorling Kindersley (India) Private Limited, New Delhi, India.

- [12] Ahmet H. Deringol & Huseyin Bilgin 2018, 'Effects of the isolation parameters on the seismic response of steel frames', Earthquakes and Structures, An Int'l Journal, vol. 15, no. 3.



DR. MOHAMMAD UMAIR,
Assistant Professor
Dept. of Civil Engineering,
Jamia Millia Islamia, New Delhi.

- [13] Centre for Engineering Strong Motion Data (CESMD), US Geology Survey (<https://www.strongmotioncenter.org/>).

- [14] Chen JZ & Kianoush MR 2009, 'Generalized SDOF System for Seismic Analysis of Concrete Rectangular Liquid Storage Tanks', Engineering Structures, vol. 31, no. 10, pp. 2426-2435. [16] Claudia Mori, Stefano Sorace & Gloria Terenzi 2015, 'Seismic Assessment and Retrofit of Two Heritage-Listed R/C Elevated Water Storage Tanks', Soil Dynamics and Earthquake Engineering, vol. 77, pp. 123-136.

- [15] Hashemi S, Saadatpour MM & Kianoush MR 2013, 'Dynamic analysis of flexible rectangular fluid containers subjected to horizontal ground motion' Earthquake Engg Struct. Dym., vol. 10. [19] Houser GW 1963b, 'The dynamic behavior of water tanks', Bulletin of Seismological Society of America, vol. 53, No. 2, pp. 381-387.

- [16] Halil Sezen, Ramazan Livaoglu & Adem Dogangun 2008, 'Dynamic analysis and seismic performance evaluation of above-ground liquid-containing tanks', Engineering Structures, vol. 30, pp. 794-803.

BIOGRAPHIES



ARFAT RAFIQ,
MTech (Earthquake Engineering)
Dept. of Civil Engineering,
Jamia Millia Islamia, New Delhi.